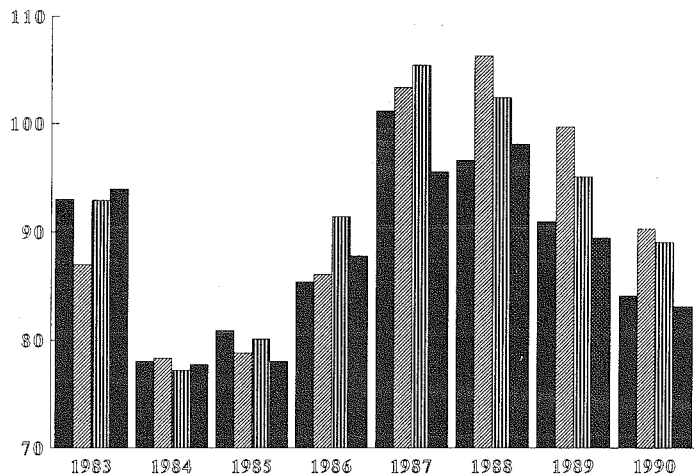


# FRÉTTARIT KOS

NR. 6

Mars 1991



# FRÉTTARIT KOS

## Nr. 6

Mars 1991

**Útgefandi:** Kjararannsóknarnefnd  
Opinberra  
Starfsmanna

**Skrifstofa K.O.S.:** Borgartúni 18 3.h.  
105 REYKJAVÍK  
Sími: (91) 62 60 30

## SKÝRINGAR :

Í þessari útgáfu eru starfsmenn ríkisins, ásamt starfsmönnum Reykjavíkurborgar. Til stendur að taka inn starfsmenn annarra bæjar- og sveitarfélaga svo og aðra hópa launþega sem taka laun hjá ríki og sveitarfélögum.

Í ÞESSUM TALNASÖFNUM ER MIÐAÐ VIÐ MÁNAÐARTÍMABIL.  
ALLAR LAUNATÖLUR ERU VEGNAR MEÐ FJÖLDA STÖÐUGILDA.

|              |  |
|--------------|--|
| STÖÐUGILDI = | Fjöldi launþega í fullu starfi   |
| TAXTALAUN =  | Fóstr mánaðarlaun samkvæmt tóxtum.   |
| YFIRVL. =    | Greidd laun fyrir yfirvinnu.   |
| ÖNNUR.L. =   | Öll önnur greidd laun á launaseðlum.   |
| HEILDARL. =  | Summan af taxtalaunum, yfirvinnulaunum og öðrum launum   |
| HREINT       |  |
| TÍMAKAUP =   | Laun án orlofs fyrir dagvinnu að viðbættum hvers kyns aukagreiðslum svo sem yfirborgunum, fæðis-, ferða-, fata- og verkfæraperingum deilt með dagvinnutímum. Þessi stærð er því hlutur dagvinnu í meðaltíma kaupi. |

Ársfjórðungstölur eru unnar þannig að tekið er þriggja mánaða vegið meðaltal af talnasöfnum hvers félags.

Nokkur félög innan BHMR voru í verkfalli hluta af mars og eða apríl 1987 og þurfti því að leiðrétta viðkomandi mánuði. Það var gert þannig að tekið var vegið meðaltal launatalnanna mánuðinn fyrir verkfall og mánuðinn eftir verkfall og það notað fyrir verkfallsmánuðinn/mánuðina.

Eftirtalin félög voru leiðrétt: (Verkfallsmánuðirnir eru í sviga). Félag bókasafnsfr. (apríl), Fél.háskm.hjúkrunarfr. (mars,apr.), Fél.isl.náttúrufr. (mars,apr.), Fél.isl.sjúkraþj. (mars,apr.), Hið isl. kennaraf. framh.sk. (mars), Hið isl. kennaraf. grunnsk. (mars), Hið isl. kennaraf. alls (mars), Matvælafræð.fél.isl. (apríl), Sálfr.fél.isl. (mars,apr.), Stéttar.fél.fél.ráðgj.(mars,apr.), Iðjuþjálfaf.isl. (mars,apr.), samtölur fyrir bhmr (mars,apr.)

Tölum fyrir félag Háskólamenntaðra starfsmanna stjórnarráðsins var breytt fyrir janúar 1987 og þær gerðar sambærilegar við febrúar 1987, vegna stofnunar félagsins á þessum tíma.

Verkföll urðu hjá nokkrum félögum innan BHMR í apríl og maí 1989. Eins var farið með leiðréttingar og að ofan er greint. Félögin voru DÍ, FB, FHH, FÍF, FÍN, FÍSP, HÍK/F, HÍK/G, HÍK/A, MNÍ, SÍ, SÍF, SLÍR, OG ÍÍ.

Fóstrur og Meinataeknar tóku sig út úr aðildarfélögum BSRB ríkisstarfsmanna og Starfsmannafélagi Reykjavíkurborgar. Nýjar talnaseríur eru frá og með þeim tíma fyrir þau félög. Ekki var byrjað á nýrri talnaröð fyrir þá hópa, þar sem þessir félög voru innanborðs áður þ.e. hjá SFRH, SFRA, STRHE og STRV og veldur það breytingu til lækkunar á kaupmætti hjá þeim hópum.

KJARARANNSÓKNARNEFND OPINBERRA STARFSMANNA (KOS) skipa nú eftirtaldir aðilar:

Fulltrúar atvinnurekenda:

Arndís Steinþórsdóttir  
Birgir Guðjónsson  
Björn Jósef Arnviðarson  
Jón G. Kristjánsson  
Logi Guðbrandsson

Fulltrúar launafólks:

Birgir Björn Sigurjónsson  
Einar Ólafsson  
Eiríkur Jónsson  
Erlingur Aðalsteinsson  
Rannveig Sigurðardóttir

FRAMKVÆMDASTJÓRN KOS skipa:

Birgir Guðjónsson, Eiríkur Jónsson, Jón G. Kristjánsson og Rannveig Sigurðardóttir.

FRAMKVÆMDASTJÓRI KOS er: Geir Thorsteinsson.

HEIMILISFANG KOS ER:

**KJARARANNSÓKNARNEFND OPINBERRA STARFSMANNA  
BORGARTÚNI 18 3.H.  
105 REYKJAVÍK**

SÍMINN HJÁ K O S ER: (91) - 62 60 30.

EFTIRPRENTUN ER HEIMIL ÚR RITINU, ENDA SÉ HEIMILDAR GETIÐ.

Frá Framkvæmdastjórn K O S:

Í þessu hefti KOS eru upplýsingar á sama grunni og unnið hefur verið á síðustu árin af Launaskrifstofu Fjármálaráðuneytisins og Launaskrifstofu Reykjavíkurborgar. Áfram mun haldið að birta upplýsingar á þessum grundvelli samtímis og KOS leggur áherslu á að gera á honum ýmsar breytingar.

Kosturinn við þessar upplýsingar, umfram þær, sem fást við kaup og kjör annarra, en þeirra er vinna hjá ríkinu og borg, er að hér er ekki um úrtak að ræða. Upplýsingarnar ná til launa allra þeirra er vinna hjá ríki og borg og allra launa, sem skráð eru hjá Launaskrifstofu Ríkisins og Launaskrifstofu Reykjavíkurborgar. Þar með er ekki sagt að efnið sé gallalaust;

Tölurnar sýna laun allra þeirra, sem í starfi eru á hverjum tíma. Þetta getur valdið erfiðleikum í samanburði. T.d. lækka meðaldagvinnulaun flestra starfsmannafélaga yfir sumarmánuðina, vegna þess, að sumarafleysingafólkið kemur inn í lægstu starfsaldursþrepin. Þetta gerist ekki hjá t.d. H.F.Í. og verður að taka tillit til þess, þá sumarmánuðirnir eru bornir saman.

Meðallaun - og kaupmáttur þeirra - einkum lítilla hópa - geta breyst mjög mikið við það eitt, að nokkrir starfsmenn í efsta starfsaldursþrepi fara á eftirlaun en nýliðar taka við.

Stærsta vandamálið er þó að ná í samanburðarhæfar tölur um laun og aðrar greiðslur til launþega á almennum vinnumarkaði og þeirra opinberu starfsmanna sem ekki taka laun frá launaskrifstofu ríkisins. Framkvæmdastjórn KOS hefur, í samráði og samvinnu við Kjararannsóknarnefnd ASÍ/VSÍ og fleiri aðila, unnið nýjan gagnagrunn til söfnunar á launaupplýsingum. Þar með er mögulegt að safna öllum launum upp á sambærilegu formi og vinna upplýsingar úr þeim. Nú þegar er þessi vinnsla komin í gagnið í nokkurum launakerfum og skil fara fram með þessum hætti og áfram er unnið að færitun í launakerfunum.

KOS vinnur að því að finna leiðir til að endurbæta talnaefnið með tilliti til m.a. ofantalinna þátta.

ATH. Notendum heftisins er bent á að geyma þetta hefti, því sennilega munu yfirlitsráðirnar ekki birtast á sama hátt á næstunni.

LÖG OG REGLUGERÐ.

KJARARANNSÓKNARNEFND OPINBERRA STARFSMANNA starfar samkvæmt 34. grein laga nr. 94 útg. 31.12.1986 um kjarasamninga opinberra starfsmanna, sem hljóðar þannig:

Á vegum þeirra aðila, sem lög þessi taka til, starfi nefndar annist kjararannsóknir og aðra upplýsingaöflun vegna kjarasamninga.

Nefndin skal skipuð jafnmörgum fulltrúum stéttarfélaganna og vinnuveitenda samkvæmt nánari ákvæðum í reglugerð sem sett skal að fengnum tillögum heildarsamtaka opinberra starfsmanna og Sambands íslenskra sveitarfélaga.

Nefndin setur sér starfsreglur, m.a. um starfssvið og starfshætti.

Kostnaður við störf nefndarinnar greiðist úr ríkissjóði.

Á grundvelli laganna var gefin út reglugerð nr. 335/1987:

REGLUGERÐ  
UM  
NEFND UM KJARARANNSÓKNIR OPINBERRA STARFSMANNA

1. gr.

Nefnd um kjararannsóknir opinberra starfsmanna starfar í þeim tilgangi að safna saman og miðla upplýsingum um kjör starfsmanna hjá opinberum aðilum, kjör annarra launþega og þróun launa og kjaramála almennt til þeirra, sem að nefndinni standa, sbr. 4. gr.

2. gr.

Nefndin aflar upplýsinga um kjör, sbr. 1. gr., sem hér segir:

1. Með söfnun, skipulagningu og skráningu upplýsinga um laun og önnur kjaraatriði opinberra starfsmanna, sem aðilar að nefndinni leggja henni til.
2. Með öflun og skipulegri skráningu upplýsinga frá öðrum aðilum, sem stunda reglubundnar kjararannsóknir.
3. Með gerð sérstakra athugana, sem aðilar að nefndinni ákveða hverju sinni.

3. gr.

Nefndin miðlar upplýsingum til þeirra opinberu vinnuveitenda, sem láta nefndinni í té upplýsingar og stéttarféлага starfsmanna þeirra með reglulegum skýrslum og sérstökum skýrslum eftir því sem við á.

Allar upplýsingar, sem safnað er eða unnar eru á vegum nefndarinnar, aðrar en þær, sem nefndin birtir, sbr. fyrri málsgrein, eru trúnaðarmál og er einstökum aðilum að nefndinni óheimilt að notfæra sér þær eða birta án samþykkis allra nefndarmanna.

4. gr.

Nefndin er skipuð 10 fulltrúum. Tveir fulltrúar vinnuveitenda eru tilnefndir af fjármálaráðherra, einn af launanefnd sveitarfélaga, einn af Reykjavíkurborg og einn úr hópi forsvarsmanna sjálfseignarstofnana samkvæmt nánari ákvörðun fjármálaráðherra.

Þrjú fulltrúar launþega skulu tilnefndir af BSRB, einn af BHRM og einn af KÍ.

Nefndin skiptir með sér verkum og ákveður sér framkvæmdastjórn.

5. gr.

Nefndin setur sér starfsreglur, m.a. um starfssvið og starfshætti og ákveður nánar með hvaða hætti hún hagar störfum að verkefnum skv. 1.-3. grein. Nefndin skal kosta kapps um að skapa einhug um laun þeirra verkefna sem henni eru falin. Ákvarðanir um verkefni og birtingu á niðurstöðum verða ekki teknar með afli atkvæða.

6. gr.

Kostnaður vegna starfa nefndarinnar greiðist úr ríkissjóði samkvæmt fjárveitingum í fjárlögum. Nefndin ræður sér sjálf starfsmenn.

7. gr.

Reglugerð þessi er sett samkvæmt lögum nr. 94 31. desember 1986, um kjarasamninga opinberra starfsmanna og öðlast þegar gildi.

Fjármálaráðuneytið 7. júlí 1987

Þorsteinn Pálsson (sign)  
Indriði H. Þorláksson (sign)

## Listi yfir stéttarfélög sem eru í heftinu

## BSRB ríkisstarfsmenn

---

Félag flugmálastarfsmanna ríkisins  
 Félag íslenskra símamanna skrifsth.  
 Félag íslenskra símamanna tæknihópur  
 Félag íslenskra símamanna alls  
 Félag starfsmanna sjónarráðsins  
 Fósturfélag Íslands  
 Hjúkrunarfélag Íslands  
 Landssamband lögreglumanna  
 Ljósmeðrafélag Íslands  
 Meinataeknafélag Íslands  
 Póstmannafélag Íslands  
 Starfsmannafélag ríkisútvarpsins  
 Starfsmannafélag sjónvarpsins  
 Starfsmannafélag ríkisst. starfsm. Alþingis  
 Starfsmannafélag ríkisstofnana S  
 Starfsmannafélag ríkisstofnana H  
 Starfsmannafélag ríkisstofnana alls  
 Tölvarðafélag Íslands  
 Starfsmannafélag Akraness  
 Starfsmannafélag Akureyrarbæjar  
 Starfsmannafélag Austur-Skaftafellssýslu  
 BSRB félögin hjá ríkinu, alls

## BHMR

---

BHMR hópur 1 (HÍK/G)  
 BHMR hópur 2 (HÍK/F)  
 BHMR hópur 3 (FH,KKHÍ,FTK)  
 BHMR hópur 4 (FHH,F]SP,Í,SÍF)  
 BHMR hópur 5 (LÆÍ,DÍ,SÍ,Pí)  
 BHMR hópur 6 (KFVH,FP,SLÍR,FHSS)  
 BHMR hópur 7 (KA,FÍN,MNÍ,FF)  
 BHMR hópur 8 (FB,FÍR,ÚTG)  
 BHMR félögin, alls

## K.Í.

---

Kennarasamband Íslands grunnskólar  
 Kennarasamband Íslands framhaldsskólar  
 Kennarasamband Íslands, alls

## Reykjavíkurborg

---

STR.V. Skrifstofuhópur  
 STR.V. Tæknihópur  
 STR.V. Heilbrigðishópur  
 Starfsmannafélag Reykjavíkurborgar  
 STR.V. Háskólahópur  
 Meinataeknafélag Íslands (R.borg)  
 Fósturfélag Íslands (R.borg)  
 Hjúkrunarfélag Íslands

## Ýmsir hópar ríkisstarfsmanna

---

Félag Íslenskra flugumferðarstjóra  
 Starfsmannafélag símfónuhjúmsveitar Íslands  
 Tæknifræðingafélag Íslands  
 Stéttarfélag verkfræðinga  
 Utan félaga kjaradömsröðun  
 Utan félaga ráðherraröðun

## Launaupphæðir og kaupmáttur taxtalauna m.v. janúar 1987 = 100

| Félag                                     | Mán. og ár | Stöðug. | Taxtal. | Yfirv. | Önnur l. | Heildarl. | KM.T. |
|---|------------|---------|---------|--------|----------|-----------|-------|
| <b>BSRB ríkisstarfsmenn mánaðartölur:</b> |            |         |         |        |          |           |       |
| Félag flugmálastarfsmanna ríkisins        |            |         |         |        |          |           |       |
| 1   | 1990       | 117.44  | 61705   | 41003  | 11712    | 114420    | 97.48 |
| 2   | 1990       | 114.64  | 62805   | 32253  | 9617     | 104675    | 97.62 |
| 3   | 1990       | 122.30  | 61892   | 38102  | 10083    | 110077    | 95.42 |
| 4   | 1990       | 118.89  | 62225   | 44190  | 10653    | 117068    | 95.64 |
| 5   | 1990       | 123.61  | 61565   | 24571  | 9387     | 95523     | 93.78 |
| 6   | 1990       | 123.85  | 61614   | 35102  | 10427    | 107143    | 93.21 |
| 7   | 1990       | 126.54  | 63129   | 41193  | 9479     | 113801    | 94.88 |
| 8   | 1990       | 127.09  | 63146   | 41017  | 9438     | 113601    | 94.61 |
| 9   | 1990       | 122.14  | 63855   | 41213  | 9656     | 114724    | 95.69 |
| 10  | 1990       | 117.27  | 64463   | 41148  | 9840     | 115451    | 96.33 |
| 11  | 1990       | 115.79  | 64968   | 38932  | 10559    | 114459    | 96.43 |
| 12  | 1990       | 117.14  | 66407   | 40291  | 32139    | 138837    | 98.33 |
| Félag íslenskra símamanna skrifsth.       |            |         |         |        |          |           |       |
| 1   | 1990       | 435.77  | 61153   | 25938  | 2877     | 89968     | 93.11 |
| 2   | 1990       | 440.21  | 62362   | 22908  | 3037     | 88307     | 93.43 |
| 3   | 1990       | 441.62  | 63228   | 21717  | 2808     | 87753     | 93.95 |
| 4   | 1990       | 438.77  | 63506   | 28125  | 2921     | 94552     | 94.08 |
| 5   | 1990       | 440.09  | 63106   | 26438  | 2661     | 92205     | 92.65 |
| 6   | 1990       | 453.62  | 63216   | 25690  | 2709     | 91615     | 92.17 |
| 7   | 1990       | 527.20  | 63812   | 20313  | 2404     | 86529     | 92.43 |
| 8   | 1990       | 524.99  | 63867   | 20179  | 2361     | 86407     | 92.23 |
| 9   | 1990       | 445.70  | 65694   | 23409  | 2711     | 91814     | 94.88 |
| 10  | 1990       | 436.04  | 65950   | 22683  | 2961     | 91594     | 94.99 |
| 11  | 1990       | 435.04  | 65987   | 25632  | 2917     | 94536     | 94.40 |
| 12  | 1990       | 445.15  | 67439   | 26111  | 25039    | 118589    | 96.24 |
| Félag íslenskra símamanna tæknihöpur      |            |         |         |        |          |           |       |
| 1   | 1990       | 340.32  | 66868   | 39037  | 4605     | 110510    | 90.62 |
| 2   | 1990       | 392.18  | 66076   | 40841  | 4062     | 110979    | 88.11 |
| 3   | 1990       | 392.56  | 66002   | 42102  | 3887     | 111991    | 87.29 |
| 4   | 1990       | 397.16  | 66154   | 46992  | 3933     | 117079    | 87.22 |
| 5   | 1990       | 393.97  | 66243   | 45030  | 3617     | 114890    | 86.56 |
| 6   | 1990       | 396.12  | 66244   | 44497  | 3614     | 114355    | 85.97 |
| 7   | 1990       | 391.30  | 67468   | 46599  | 3601     | 117668    | 86.98 |
| 8   | 1990       | 393.17  | 67545   | 46518  | 3584     | 117647    | 86.81 |
| 9   | 1990       | 370.81  | 67155   | 46582  | 4023     | 117760    | 86.32 |
| 10  | 1990       | 355.34  | 66776   | 46461  | 4235     | 117472    | 85.60 |
| 11  | 1990       | 351.75  | 66936   | 47270  | 4513     | 118719    | 85.23 |
| 12  | 1990       | 350.00  | 68684   | 42719  | 27721    | 139124    | 87.24 |
| Félag íslenskra símamanna alls            |            |         |         |        |          |           |       |
| 1   | 1990       | 776.09  | 63659   | 31682  | 3635     | 98976     | 91.74 |
| 2   | 1990       | 832.39  | 64112   | 31357  | 3520     | 98989     | 90.91 |
| 3   | 1990       | 834.18  | 64533   | 31310  | 3316     | 99159     | 90.76 |
| 4   | 1990       | 835.93  | 64764   | 37089  | 3402     | 105255    | 90.81 |
| 5   | 1990       | 834.06  | 64588   | 35220  | 3113     | 102921    | 89.75 |
| 6   | 1990       | 849.74  | 64628   | 34457  | 3131     | 102216    | 89.19 |
| 7   | 1990       | 918.50  | 65370   | 31511  | 2914     | 99795     | 89.63 |
| 8   | 1990       | 918.16  | 65442   | 31458  | 2885     | 99785     | 89.45 |
| 9   | 1990       | 816.51  | 66357   | 33933  | 3307     | 103597    | 90.71 |
| 10  | 1990       | 791.38  | 66321   | 33360  | 3533     | 103214    | 90.42 |
| 11  | 1990       | 786.79  | 66411   | 35306  | 3631     | 105348    | 89.92 |
| 12  | 1990       | 795.15  | 67987   | 33421  | 26220    | 127628    | 91.83 |
| Félag starfsmanna sjónarráðsins           |            |         |         |        |          |           |       |
| 1   | 1990       | 248.87  | 68430   | 25540  | 381      | 94351     | 95.52 |
| 2   | 1990       | 251.03  | 69140   | 28566  | 894      | 98600     | 94.97 |
| 3   | 1990       | 251.37  | 69391   | 26226  | 700      | 96317     | 94.53 |
| 4   | 1990       | 253.98  | 69401   | 27124  | 693      | 97218     | 94.26 |
| 5   | 1990       | 251.15  | 69606   | 27320  | 700      | 97626     | 93.69 |
| 6   | 1990       | 256.35  | 69357   | 28645  | 700      | 98702     | 92.71 |
| 7   | 1990       | 288.79  | 68823   | 20511  | 710      | 90044     | 91.40 |
| 8   | 1990       | 288.79  | 68847   | 20720  | 710      | 90277     | 91.15 |
| 9   | 1990       | 263.91  | 70460   | 25430  | 780      | 96670     | 93.90 |
| 10  | 1990       | 254.71  | 71086   | 29384  | 709      | 101179    | 93.87 |
| 11  | 1990       | 259.78  | 71088   | 30942  | 799      | 102829    | 93.24 |
| 12  | 1990       | 262.27  | 72988   | 29533  | 22251    | 124772    | 95.50 |
| Fóstrufélag Íslands                       |            |         |         |        |          |           |       |
| 1   | 1990       | 43.54   | 63973   | 10569  | 1006     | 75548     | 88.45 |
| 2   | 1990       | 41.52   | 64859   | 9690   | 684      | 75233     | 88.24 |
| 3   | 1990       | 45.46   | 65228   | 13764  | 1462     | 80454     | 88.01 |



## Launaupphæðir og kaupmáttur taxtalauna m.v. janúar 1987 = 100

| Félag                      | Mán. og ár | Stöðug. | Taxtal. | Yfir.l. | Önnur l. | Heildarl. | KM.T.  |       |
|----------------------------|------------|---------|---------|---------|----------|-----------|--------|-------|
|                            | 4          | 1990    | 43.77   | 65280   | 12430    | 1045      | 78755  | 87.82 |
|                            | 5          | 1990    | 44.03   | 65360   | 12778    | 911       | 79049  | 87.14 |
|                            | 6          | 1990    | 45.84   | 65307   | 16634    | 1179      | 83120  | 86.47 |
|                            | 7          | 1990    | 49.18   | 65587   | 9290     | 1874      | 76751  | 86.27 |
|                            | 8          | 1990    | 49.18   | 65630   | 9335     | 1874      | 76839  | 86.06 |
|                            | 9          | 1990    | 46.05   | 66757   | 15236    | 1472      | 83465  | 87.55 |
|                            | 10         | 1990    | 47.70   | 66717   | 19471    | 1646      | 87834  | 87.26 |
|                            | 11         | 1990    | 48.24   | 66695   | 19953    | 1684      | 88332  | 86.64 |
|                            | 12         | 1990    | 47.90   | 68551   | 16338    | 20972     | 105861 | 88.84 |
| Hjúkrunarfélag Íslands     |            |         |         |         |          |           |        |       |
|                            | 1          | 1990    | 492.20  | 79376   | 22154    | 9421      | 110951 | 91.81 |
|                            | 2          | 1990    | 489.45  | 79255   | 10336    | 4650      | 94241  | 90.20 |
|                            | 3          | 1990    | 506.26  | 79358   | 20008    | 9220      | 108586 | 89.57 |
|                            | 4          | 1990    | 495.31  | 79661   | 30024    | 8395      | 118080 | 89.65 |
|                            | 5          | 1990    | 488.84  | 79502   | 13878    | 4642      | 98022  | 88.66 |
|                            | 6          | 1990    | 501.71  | 79472   | 27386    | 8892      | 115750 | 88.02 |
|                            | 7          | 1990    | 495.83  | 80831   | 21773    | 7010      | 109614 | 88.95 |
|                            | 8          | 1990    | 495.38  | 80927   | 21914    | 7033      | 109874 | 88.78 |
|                            | 9          | 1990    | 480.36  | 80777   | 24620    | 8768      | 114165 | 88.62 |
|                            | 10         | 1990    | 480.26  | 81206   | 25093    | 9247      | 115546 | 88.85 |
|                            | 11         | 1990    | 515.08  | 81212   | 23710    | 8511      | 113433 | 88.26 |
|                            | 12         | 1990    | 510.72  | 83464   | 27528    | 31924     | 142916 | 90.48 |
| Landssamband lögreglumanna |            |         |         |         |          |           |        |       |
|                            | 1          | 1990    | 621.90  | 68612   | 59323    | 23717     | 151652 | 91.65 |
|                            | 2          | 1990    | 622.08  | 69618   | 49386    | 19758     | 138762 | 91.50 |
|                            | 3          | 1990    | 647.30  | 69016   | 47218    | 17956     | 134190 | 89.97 |
|                            | 4          | 1990    | 651.33  | 68926   | 52338    | 19335     | 140599 | 89.58 |
|                            | 5          | 1990    | 659.76  | 68685   | 53740    | 20752     | 143177 | 88.47 |
|                            | 6          | 1990    | 676.10  | 68448   | 53688    | 20423     | 142559 | 87.56 |
|                            | 7          | 1990    | 764.90  | 67658   | 47969    | 17111     | 132738 | 85.98 |
|                            | 8          | 1990    | 766.69  | 67677   | 47953    | 17111     | 132741 | 85.74 |
|                            | 9          | 1990    | 688.38  | 69392   | 45973    | 18599     | 133964 | 87.93 |
|                            | 10         | 1990    | 635.06  | 70816   | 48745    | 19643     | 139204 | 89.49 |
|                            | 11         | 1990    | 637.25  | 71136   | 52074    | 20468     | 143678 | 89.28 |
|                            | 12         | 1990    | 633.95  | 72802   | 50161    | 41548     | 164511 | 91.15 |
| Ljósmeðrafélag Íslands     |            |         |         |         |          |           |        |       |
|                            | 1          | 1990    | 68.30   | 74448   | 14424    | 10500     | 99372  | 96.65 |
|                            | 2          | 1990    | 66.82   | 75498   | 6257     | 4926      | 86681  | 96.44 |
|                            | 3          | 1990    | 68.52   | 75835   | 13012    | 11347     | 100194 | 96.08 |
|                            | 4          | 1990    | 67.80   | 75935   | 31442    | 9865      | 117242 | 95.91 |
|                            | 5          | 1990    | 66.81   | 75914   | 9166     | 5249      | 90329  | 95.03 |
|                            | 6          | 1990    | 67.97   | 75921   | 20863    | 10487     | 107271 | 94.39 |
|                            | 7          | 1990    | 70.01   | 76940   | 13161    | 9010      | 99111  | 95.03 |
|                            | 8          | 1990    | 70.48   | 76821   | 13074    | 8950      | 98845  | 94.59 |
|                            | 9          | 1990    | 70.46   | 77036   | 15892    | 10737     | 103665 | 94.87 |
|                            | 10         | 1990    | 69.72   | 77540   | 15419    | 11452     | 104411 | 95.23 |
|                            | 11         | 1990    | 73.25   | 77635   | 16672    | 10883     | 105190 | 94.70 |
|                            | 12         | 1990    | 71.53   | 79804   | 25949    | 34060     | 139813 | 97.11 |
| Meinataeknafélag Íslands   |            |         |         |         |          |           |        |       |
|                            | 1          | 1990    | 109.21  | 73782   | 29419    | 8478      | 111679 | 93.49 |
|                            | 2          | 1990    | 110.52  | 74734   | 17475    | 3787      | 95996  | 93.18 |
|                            | 3          | 1990    | 108.93  | 75045   | 31860    | 8139      | 115044 | 92.80 |
|                            | 4          | 1990    | 106.34  | 75409   | 29338    | 9113      | 113860 | 92.97 |
|                            | 5          | 1990    | 104.82  | 75525   | 19609    | 4652      | 99786  | 92.28 |
|                            | 6          | 1990    | 106.95  | 75759   | 35661    | 8258      | 119678 | 91.93 |
|                            | 7          | 1990    | 110.80  | 76703   | 28803    | 6934      | 112440 | 92.47 |
|                            | 8          | 1990    | 111.30  | 76733   | 28707    | 6903      | 112343 | 92.22 |
|                            | 9          | 1990    | 109.83  | 76713   | 30817    | 7908      | 115438 | 92.21 |
|                            | 10         | 1990    | 116.35  | 76707   | 28759    | 6916      | 112382 | 91.95 |
|                            | 11         | 1990    | 117.26  | 76779   | 32358    | 7215      | 116352 | 91.41 |
|                            | 12         | 1990    | 115.32  | 79177   | 28566    | 31731     | 139474 | 94.04 |
| Póstmannafélag Íslands     |            |         |         |         |          |           |        |       |
|                            | 1          | 1990    | 755.29  | 56041   | 37024    | 2964      | 96029  | 93.31 |
|                            | 2          | 1990    | 744.49  | 56841   | 18551    | 2657      | 78049  | 93.12 |
|                            | 3          | 1990    | 750.58  | 57026   | 18691    | 2744      | 78461  | 92.66 |
|                            | 4          | 1990    | 750.36  | 57247   | 19141    | 2565      | 78953  | 92.74 |
|                            | 5          | 1990    | 751.30  | 56982   | 17747    | 1146      | 75875  | 91.48 |
|                            | 6          | 1990    | 774.17  | 56815   | 19016    | 1116      | 76947  | 90.59 |
|                            | 7          | 1990    | 967.61  | 55781   | 11022    | 1037      | 67840  | 88.36 |
|                            | 8          | 1990    | 968.61  | 55927   | 11083    | 1037      | 68047  | 88.32 |
|                            | 9          | 1990    | 764.50  | 58628   | 17865    | 1299      | 77792  | 92.60 |

Launaupphæðir og kaupmáttur taxtalauna m.v. janúar 1987 = 100

| Félag                               | Mán. og ár | Stöðug. | Taxtal. | Yfirv.l. | Önnur l. | Heildarl. | KM.T. |
|-------------------------------------|------------|---------|---------|----------|----------|-----------|-------|
|                                     | 10 1990    | 757.32  | 58655   | 20191    | 2709     | 81555     | 92.39 |
|                                     | 11 1990    | 773.95  | 58568   | 23146    | 2903     | 84617     | 91.62 |
|                                     | 12 1990    | 921.56  | 58830   | 22673    | 20323    | 101826    | 91.81 |
| Starfsmannafélag ríkisútvarpsins    |            |         |         |          |          |           |       |
|                                     | 1 1990     | 93.43   | 66089   | 7739     | 775      | 74603     | 93.81 |
|                                     | 2 1990     | 97.90   | 66859   | 22216    | 2862     | 91937     | 93.38 |
|                                     | 3 1990     | 94.89   | 67062   | 23729    | 2528     | 93319     | 92.90 |
|                                     | 4 1990     | 98.90   | 66824   | 21169    | 2493     | 90486     | 92.29 |
|                                     | 5 1990     | 100.47  | 66678   | 24966    | 2321     | 93965     | 91.26 |
|                                     | 6 1990     | 105.85  | 66385   | 24837    | 2218     | 93440     | 90.24 |
|                                     | 7 1990     | 116.54  | 66148   | 18314    | 2211     | 86673     | 89.33 |
|                                     | 8 1990     | 116.06  | 66327   | 18242    | 2221     | 86790     | 89.29 |
|                                     | 9 1990     | 99.07   | 68484   | 19558    | 2649     | 90691     | 92.21 |
|                                     | 10 1990    | 101.83  | 68747   | 23866    | 1964     | 94577     | 92.31 |
|                                     | 11 1990    | 98.37   | 68997   | 23916    | 2387     | 95300     | 92.02 |
|                                     | 12 1990    | 100.08  | 70509   | 24672    | 22221    | 117402    | 93.81 |
| Starfsmannafélag sjónvarpsins       |            |         |         |          |          |           |       |
|                                     | 1 1990     | 90.48   | 66079   | 43013    | 4092     | 113184    | 94.88 |
|                                     | 2 1990     | 88.22   | 67234   | 40492    | 4276     | 112002    | 94.99 |
|                                     | 3 1990     | 87.94   | 68755   | 37424    | 4325     | 110504    | 96.35 |
|                                     | 4 1990     | 87.47   | 68855   | 39370    | 4569     | 112794    | 96.19 |
|                                     | 5 1990     | 85.42   | 69020   | 47456    | 3558     | 120034    | 95.56 |
|                                     | 6 1990     | 90.52   | 68643   | 43913    | 3565     | 116121    | 94.39 |
|                                     | 7 1990     | 100.44  | 68735   | 31173    | 3521     | 103429    | 93.90 |
|                                     | 8 1990     | 100.44  | 69001   | 31223    | 3530     | 103754    | 93.97 |
|                                     | 9 1990     | 93.75   | 70043   | 37394    | 4002     | 111439    | 95.40 |
|                                     | 10 1990    | 87.82   | 70950   | 45524    | 3976     | 120450    | 96.38 |
|                                     | 11 1990    | 89.70   | 71161   | 47990    | 4820     | 123971    | 96.01 |
|                                     | 12 1990    | 89.73   | 73066   | 50533    | 24792    | 148391    | 98.34 |
| Starfsmannafélag ríkisstofnana T    |            |         |         |          |          |           |       |
|                                     | 1 1990     | 1259.71 | 60952   | 32275    | 3906     | 97133     | 93.25 |
|                                     | 2 1990     | 1213.99 | 62086   | 23693    | 2886     | 88665     | 93.46 |
|                                     | 3 1990     | 1235.06 | 63230   | 31097    | 3754     | 98081     | 94.40 |
|                                     | 4 1990     | 1229.48 | 62880   | 32532    | 4168     | 99580     | 93.60 |
|                                     | 5 1990     | 1239.14 | 62845   | 25436    | 2753     | 91034     | 92.71 |
|                                     | 6 1990     | 1317.29 | 62480   | 32707    | 3430     | 98617     | 91.79 |
|                                     | 7 1990     | 1510.57 | 61687   | 28034    | 2968     | 92689     | 89.54 |
|                                     | 8 1990     | 1514.73 | 61698   | 28105    | 2947     | 92750     | 89.53 |
|                                     | 9 1990     | 1288.14 | 63959   | 33542    | 3765     | 101266    | 92.82 |
|                                     | 10 1990    | 1240.00 | 64551   | 32680    | 3841     | 101072    | 93.42 |
|                                     | 11 1990    | 1264.51 | 64522   | 37182    | 3866     | 105570    | 92.75 |
|                                     | 12 1990    | 1269.54 | 66211   | 32545    | 25464    | 124220    | 94.95 |
| Starfsmannafélag ríkisstofnana S    |            |         |         |          |          |           |       |
|                                     | 1 1990     | 1426.18 | 62675   | 19031    | 382      | 82088     | 95.43 |
|                                     | 2 1990     | 1425.05 | 63552   | 17832    | 232      | 81616     | 95.22 |
|                                     | 3 1990     | 1456.87 | 63584   | 20098    | 400      | 84082     | 94.48 |
|                                     | 4 1990     | 1457.76 | 63720   | 20115    | 417      | 84252     | 94.40 |
|                                     | 5 1990     | 1486.96 | 63611   | 17098    | 291      | 81000     | 93.39 |
|                                     | 6 1990     | 1542.36 | 63464   | 20487    | 440      | 84391     | 92.54 |
|                                     | 7 1990     | 1685.98 | 63193   | 16830    | 339      | 80362     | 91.54 |
|                                     | 8 1990     | 1681.94 | 63287   | 16978    | 347      | 80612     | 91.40 |
|                                     | 9 1990     | 1501.71 | 65045   | 19524    | 565      | 85134     | 93.95 |
|                                     | 10 1990    | 1475.38 | 66043   | 20700    | 426      | 87169     | 95.13 |
|                                     | 11 1990    | 1495.81 | 66070   | 22883    | 384      | 89337     | 94.52 |
|                                     | 12 1990    | 1509.02 | 67689   | 20400    | 21484    | 109573    | 96.60 |
| Starfsmannafélag ríkisstofnana H    |            |         |         |          |          |           |       |
|                                     | 1 1990     | 889.90  | 57978   | 17420    | 9151     | 84549     | 93.43 |
|                                     | 2 1990     | 904.83  | 58719   | 10074    | 6774     | 75567     | 93.11 |
|                                     | 3 1990     | 924.79  | 58727   | 12970    | 8775     | 80472     | 92.35 |
|                                     | 4 1990     | 925.14  | 58734   | 20851    | 8760     | 88345     | 92.09 |
|                                     | 5 1990     | 911.70  | 58789   | 15627    | 6235     | 80651     | 91.35 |
|                                     | 6 1990     | 944.76  | 58661   | 20162    | 8385     | 87208     | 90.52 |
|                                     | 7 1990     | 1071.00 | 58808   | 13065    | 7175     | 79048     | 90.16 |
|                                     | 8 1990     | 1071.41 | 58815   | 13074    | 7213     | 79102     | 89.89 |
|                                     | 9 1990     | 911.78  | 59920   | 17621    | 9033     | 86574     | 91.59 |
|                                     | 10 1990    | 911.11  | 60062   | 17894    | 9451     | 87407     | 91.56 |
|                                     | 11 1990    | 951.23  | 60109   | 17444    | 9107     | 86660     | 91.01 |
|                                     | 12 1990    | 950.36  | 61639   | 19368    | 28939    | 109946    | 93.10 |
| Starfsmannafélag ríkisstofnana alls |            |         |         |          |          |           |       |
|                                     | 1 1990     | 3575.79 | 60899   | 23296    | 3806     | 88001     | 94.10 |

Launaupphæðir og kaupmáttur taxtalauna m.v. janúar 1987 = 100

| Félag                         | Mán. og ár | Stöðug. | Taxtal. | Yfirv.l. | Önnur l. | Heildarl. | KM.T.  |       |
|-------------------------------|------------|---------|---------|----------|----------|-----------|--------|-------|
|                               | 2          | 1990    | 3543.87 | 61816    | 17859    | 2811      | 82486  | 93.98 |
|                               | 3          | 1990    | 3616.72 | 62221    | 22031    | 3687      | 87939  | 93.82 |
|                               | 4          | 1990    | 3612.38 | 62157    | 24530    | 3830      | 90517  | 93.44 |
|                               | 5          | 1990    | 3637.80 | 62142    | 19570    | 2619      | 84331  | 92.58 |
|                               | 6          | 1990    | 3804.41 | 61931    | 24638    | 3448      | 90017  | 91.64 |
|                               | 7          | 1990    | 4267.55 | 61559    | 19851    | 2985      | 84395  | 90.49 |
|                               | 8          | 1990    | 4268.08 | 61600    | 19947    | 2993      | 84540  | 90.27 |
|                               | 9          | 1990    | 3701.63 | 63405    | 23933    | 3784      | 91102  | 92.93 |
|                               | 10         | 1990    | 3626.49 | 64030    | 24091    | 3861      | 91982  | 93.59 |
|                               | 11         | 1990    | 3711.55 | 64015    | 26361    | 3806      | 94182  | 92.93 |
|                               | 12         | 1990    | 3728.92 | 65644    | 24272    | 24739     | 114655 | 95.07 |
| Tollvarðafélag Íslands        |            |         |         |          |          |           |        |       |
|                               | 1          | 1990    | 113.83  | 70607    | 49257    | 8600      | 128464 | 90.61 |
|                               | 2          | 1990    | 115.80  | 71857    | 35065    | 8241      | 115163 | 90.73 |
|                               | 3          | 1990    | 116.21  | 71798    | 33966    | 7925      | 113689 | 89.91 |
|                               | 4          | 1990    | 116.00  | 71853    | 37965    | 8782      | 118600 | 89.71 |
|                               | 5          | 1990    | 116.53  | 71875    | 49728    | 5855      | 127458 | 88.93 |
|                               | 6          | 1990    | 116.53  | 72173    | 49882    | 5862      | 127917 | 88.69 |
|                               | 7          | 1990    | 130.28  | 71740    | 38330    | 6027      | 116097 | 87.58 |
|                               | 8          | 1990    | 130.28  | 71822    | 38362    | 6027      | 116211 | 87.41 |
|                               | 9          | 1990    | 128.43  | 71989    | 38745    | 6604      | 117338 | 87.63 |
|                               | 10         | 1990    | 120.12  | 74353    | 40444    | 7184      | 121981 | 90.26 |
|                               | 11         | 1990    | 116.49  | 73575    | 45186    | 7012      | 125773 | 88.71 |
|                               | 12         | 1990    | 116.50  | 75314    | 39133    | 29002     | 143449 | 90.58 |
| BSRB félagin hjá ríkinu, alls |            |         |         |          |          |           |        |       |
|                               | 1          | 1990    | 7324.27 | 63523    | 29135    | 5862      | 98520  | 93.10 |
|                               | 2          | 1990    | 7336.01 | 64331    | 22510    | 4556      | 91397  | 92.77 |
|                               | 3          | 1990    | 7463.81 | 64605    | 25468    | 5287      | 95360  | 92.40 |
|                               | 4          | 1990    | 7451.26 | 64624    | 28772    | 5431      | 98827  | 92.15 |
|                               | 5          | 1990    | 7420.43 | 64457    | 24619    | 4367      | 93443  | 91.09 |
|                               | 6          | 1990    | 7676.38 | 64278    | 28558    | 5120      | 97956  | 90.21 |
|                               | 7          | 1990    | 8519.19 | 63921    | 23316    | 4381      | 91618  | 89.13 |
|                               | 8          | 1990    | 8522.76 | 63981    | 23382    | 4385      | 91748  | 88.93 |
|                               | 9          | 1990    | 7495.00 | 65797    | 26971    | 5237      | 98005  | 91.47 |
|                               | 10         | 1990    | 7316.73 | 66347    | 27651    | 5502      | 99500  | 91.99 |
|                               | 11         | 1990    | 7454.97 | 66406    | 29625    | 5548      | 101579 | 91.44 |
|                               | 12         | 1990    | 7622.37 | 67766    | 28264    | 26499     | 122529 | 93.09 |

## Launaupphæðir og kaupmáttur taxtalauna m.v. janúar 1987 = 100

| Félag                                      | Mán. og ár | Stöðug. | Taxtal. | Yfirv.l. | Önnur l. | Heildarl. | KM.T. |
|--|------------|---------|---------|----------|----------|-----------|-------|
| <b>BHMR hópar mánaðartölur:</b>            |            |         |         |          |          |           |       |
| <b>BHMR hópur 1 (HÍK/G)</b>                |            |         |         |          |          |           |       |
| 1  | 1990       | 250,28  | 76247   | 32192    | 263      | 108702    | 95,93 |
| 2  | 1990       | 249,61  | 76227   | 31463    | 119      | 107809    | 94,37 |
| 3  | 1990       | 251,72  | 76326   | 34091    | 363      | 110780    | 93,72 |
| 4  | 1990       | 253,41  | 76175   | 32082    | 172      | 108429    | 93,25 |
| 5  | 1990       | 253,46  | 77338   | 28874    | 84       | 106296    | 93,83 |
| 6  | 1990       | 253,71  | 77336   | 30424    | 144      | 107904    | 93,18 |
| 7  | 1990       | 250,18  | 81122   | 2676     | 8        | 83806     | 97,10 |
| 8  | 1990       | 250,18  | 81145   | 2676     | 8        | 83829     | 96,83 |
| 9  | 1990       | 230,60  | 78293   | 28046    | 174      | 106513    | 93,44 |
| 10   | 1990       | 230,12  | 78629   | 33259    | 491      | 112379    | 93,59 |
| 11   | 1990       | 230,33  | 78646   | 35865    | 539      | 115050    | 92,97 |
| 12   | 1990       | 229,97  | 80647   | 33613    | 24140    | 138400    | 95,11 |
| <b>BHMR hópur 2 (HÍK/F)</b>                |            |         |         |          |          |           |       |
| 1  | 1990       | 882,27  | 80072   | 41678    | 125      | 121875    | 91,19 |
| 2  | 1990       | 868,20  | 80196   | 36740    | 127      | 117063    | 89,87 |
| 3  | 1990       | 873,14  | 80224   | 41606    | 136      | 121966    | 89,16 |
| 4  | 1990       | 871,83  | 80305   | 41810    | 127      | 122242    | 88,99 |
| 5  | 1990       | 870,59  | 81564   | 41791    | 126      | 123481    | 89,57 |
| 6  | 1990       | 870,60  | 81915   | 51396    | 358      | 133669    | 89,34 |
| 7  | 1990       | 867,07  | 85970   | 3206     | 5        | 89181     | 93,15 |
| 8  | 1990       | 865,07  | 85983   | 3480     | 5        | 89468     | 92,88 |
| 9  | 1990       | 892,35  | 82227   | 44468    | 80       | 122775    | 88,83 |
| 10   | 1990       | 886,48  | 82625   | 46553    | 91       | 129269    | 89,02 |
| 11   | 1990       | 889,67  | 82852   | 47964    | 91       | 130907    | 88,66 |
| 12   | 1990       | 891,12  | 84900   | 52848    | 22335    | 160083    | 90,63 |
| <b>BHMR hópur 3 (FH, KKHÍ, FTK)</b>        |            |         |         |          |          |           |       |
| 1  | 1990       | 431,75  | 99282   | 14523    | 0        | 113805    | 90,29 |
| 2  | 1990       | 431,10  | 99489   | 8673     | 0        | 108162    | 89,02 |
| 3  | 1990       | 438,21  | 99309   | 12883    | 0        | 112192    | 88,13 |
| 4  | 1990       | 440,30  | 99445   | 12953    | 0        | 112398    | 87,99 |
| 5  | 1990       | 447,73  | 99944   | 9289     | 0        | 109233    | 87,64 |
| 6  | 1990       | 451,24  | 100003  | 14872    | 778      | 115653    | 87,09 |
| 7  | 1990       | 458,37  | 100838  | 4208     | 0        | 105046    | 87,24 |
| 8  | 1990       | 457,43  | 100845  | 4201     | 0        | 105046    | 86,98 |
| 9  | 1990       | 459,84  | 99735   | 18935    | 0        | 118670    | 86,03 |
| 10   | 1990       | 468,59  | 99169   | 21902    | 0        | 121071    | 85,31 |
| 11   | 1990       | 473,57  | 99385   | 38199    | 8        | 137592    | 84,92 |
| 12   | 1990       | 471,69  | 99771   | 36563    | 20194    | 156528    | 85,04 |
| <b>BHMR hópur 4 (FHH, FÍSP, ÍÍ, SÍF)</b>   |            |         |         |          |          |           |       |
| 1  | 1990       | 209,56  | 74982   | 21705    | 7798     | 104485    | 80,54 |
| 2  | 1990       | 208,59  | 74890   | 12135    | 3662     | 90687     | 79,15 |
| 3  | 1990       | 213,05  | 75504   | 22412    | 7221     | 105137    | 79,15 |
| 4  | 1990       | 211,78  | 75677   | 27204    | 7357     | 110238    | 79,09 |
| 5  | 1990       | 212,51  | 76995   | 15945    | 3799     | 96739     | 79,75 |
| 6  | 1990       | 223,55  | 77351   | 26521    | 7192     | 111064    | 79,57 |
| 7  | 1990       | 228,61  | 80412   | 20243    | 5777     | 106432    | 82,17 |
| 8  | 1990       | 228,84  | 80423   | 20508    | 5780     | 106711    | 81,93 |
| 9  | 1990       | 216,30  | 77548   | 22271    | 7148     | 106967    | 79,02 |
| 10   | 1990       | 219,56  | 77261   | 25154    | 7388     | 109803    | 78,51 |
| 11   | 1990       | 226,12  | 77472   | 23622    | 6994     | 108088    | 78,19 |
| 12   | 1990       | 224,64  | 79697   | 25674    | 29962    | 135333    | 80,24 |
| <b>BHMR hópur 5 (LÆÍ, DÍ, SÍ, PÍ)</b>      |            |         |         |          |          |           |       |
| 1  | 1990       | 384,61  | 85581   | 11907    | 14479    | 111967    | 88,15 |
| 2  | 1990       | 499,66  | 83551   | 8757     | 4296     | 96604     | 84,68 |
| 3  | 1990       | 385,38  | 85653   | 13035    | 15075    | 113763    | 86,10 |
| 4  | 1990       | 393,71  | 85300   | 13951    | 14440    | 113691    | 85,49 |
| 5  | 1990       | 385,46  | 85705   | 13827    | 4991     | 104523    | 85,12 |
| 6  | 1990       | 394,43  | 86700   | 15052    | 16066    | 117818    | 85,52 |
| 7  | 1990       | 510,88  | 86544   | 11057    | 12103    | 109704    | 84,81 |
| 8  | 1990       | 512,00  | 86558   | 11077    | 12826    | 110461    | 84,56 |
| 9  | 1990       | 397,22  | 86605   | 15164    | 15471    | 117240    | 84,62 |
| 10   | 1990       | 398,45  | 86811   | 15439    | 15873    | 118123    | 84,59 |
| 11   | 1990       | 400,68  | 87056   | 16596    | 15599    | 119251    | 84,25 |
| 12   | 1990       | 398,34  | 87588   | 17276    | 27727    | 132591    | 84,56 |
| <b>BHMR hópur 6 (KRVH, FP, SLÍR, FHSS)</b> |            |         |         |          |          |           |       |
| 1  | 1990       | 386,19  | 90041   | 49757    | 3305     | 143103    | 88,33 |
| 2  | 1990       | 383,93  | 90150   | 50895    | 2486     | 143531    | 87,02 |
| 3  | 1990       | 390,04  | 89770   | 53395    | 2319     | 145484    | 85,95 |

## Launaupphæðir og kaupmáttur taxtalauna m.v. janúar 1987 = 100

| Félag                        | Mán. og ár | Stöðug. | Taxtal. | Yfirv.I. | Önnur I. | Heildarl. | KM.T. |
|------------------------------|------------|---------|---------|----------|----------|-----------|-------|
|                              | 4 1990     | 388.33  | 90105   | 53764    | 3021     | 146890    | 86.01 |
|                              | 5 1990     | 389.18  | 91477   | 51087    | 2911     | 145475    | 86.53 |
|                              | 6 1990     | 397.08  | 91224   | 54420    | 3345     | 148989    | 85.70 |
|                              | 7 1990     | 418.46  | 94618   | 48136    | 2497     | 145251    | 88.31 |
|                              | 8 1990     | 418.46  | 94638   | 48493    | 2497     | 145628    | 88.06 |
|                              | 9 1990     | 417.32  | 90688   | 50886    | 2657     | 144231    | 84.39 |
|                              | 10 1990    | 421.52  | 90969   | 55788    | 2677     | 149434    | 84.43 |
|                              | 11 1990    | 422.93  | 90859   | 59360    | 2640     | 152859    | 83.75 |
|                              | 12 1990    | 423.18  | 93327   | 50995    | 24377    | 168699    | 85.82 |
| BHMR hópur 7 (KA,FÍN,MNÍ,FF) |            |         |         |          |          |           |       |
|                              | 1 1990     | 419.09  | 88092   | 42884    | 1664     | 132640    | 93.17 |
|                              | 2 1990     | 418.65  | 88154   | 32518    | 1854     | 122526    | 91.74 |
|                              | 3 1990     | 427.43  | 88242   | 46490    | 2563     | 137295    | 91.08 |
|                              | 4 1990     | 431.35  | 88134   | 43419    | 2313     | 133866    | 90.69 |
|                              | 5 1990     | 427.31  | 89613   | 41886    | 1682     | 133181    | 91.39 |
|                              | 6 1990     | 441.69  | 89274   | 48790    | 2169     | 140233    | 90.42 |
|                              | 7 1990     | 461.70  | 92521   | 42875    | 2164     | 137560    | 93.10 |
|                              | 8 1990     | 464.64  | 92518   | 43094    | 2151     | 137763    | 92.81 |
|                              | 9 1990     | 438.25  | 89528   | 47316    | 2192     | 139036    | 89.82 |
|                              | 10 1990    | 432.33  | 90332   | 48788    | 2163     | 141283    | 90.38 |
|                              | 11 1990    | 439.72  | 90910   | 50810    | 2205     | 143925    | 90.34 |
|                              | 12 1990    | 432.25  | 92990   | 43468    | 25302    | 161760    | 92.18 |
| BHMR hópur 8 (FB,FÍF,ÚTG)    |            |         |         |          |          |           |       |
|                              | 1 1990     | 233.06  | 81368   | 22084    | 466      | 103918    | 87.67 |
|                              | 2 1990     | 229.46  | 81899   | 23289    | 493      | 105681    | 86.83 |
|                              | 3 1990     | 238.02  | 81887   | 26838    | 426      | 109151    | 86.10 |
|                              | 4 1990     | 241.42  | 81753   | 27894    | 522      | 110169    | 85.70 |
|                              | 5 1990     | 240.57  | 83298   | 26375    | 429      | 110102    | 86.54 |
|                              | 6 1990     | 247.90  | 82963   | 29461    | 442      | 112866    | 85.60 |
|                              | 7 1990     | 255.17  | 86645   | 23164    | 412      | 110221    | 88.81 |
|                              | 8 1990     | 255.17  | 86713   | 23220    | 412      | 110345    | 88.61 |
|                              | 9 1990     | 246.06  | 83814   | 26596    | 462      | 110872    | 85.66 |
|                              | 10 1990    | 242.30  | 84256   | 29494    | 616      | 114366    | 85.88 |
|                              | 11 1990    | 249.85  | 83825   | 30642    | 568      | 115035    | 84.86 |
|                              | 12 1990    | 248.97  | 86185   | 28748    | 22585    | 137518    | 87.04 |
| BHMR félagin, alls           |            |         |         |          |          |           |       |
|                              | 1 1990     | 3196.81 | 85046   | 32082    | 2960     | 120088    | 90.19 |
|                              | 2 1990     | 3289.20 | 84890   | 27026    | 1488     | 113404    | 88.58 |
|                              | 3 1990     | 3216.99 | 85202   | 33397    | 3003     | 121602    | 88.17 |
|                              | 4 1990     | 3232.13 | 85224   | 33377    | 3000     | 121601    | 87.93 |
|                              | 5 1990     | 3226.81 | 86367   | 31209    | 1493     | 119069    | 88.31 |
|                              | 6 1990     | 3280.20 | 86510   | 37041    | 3366     | 126917    | 87.85 |
|                              | 7 1990     | 3450.44 | 89286   | 17825    | 2799     | 109910    | 90.08 |
|                              | 8 1990     | 3451.79 | 89301   | 18022    | 2910     | 110233    | 89.82 |
|                              | 9 1990     | 3297.94 | 86773   | 34631    | 3028     | 124432    | 87.29 |
|                              | 10 1990    | 3299.35 | 87040   | 37163    | 3138     | 127341    | 87.32 |
|                              | 11 1990    | 3332.87 | 87203   | 40841    | 3081     | 131125    | 86.89 |
|                              | 12 1990    | 3320.16 | 88912   | 39831    | 23984    | 152727    | 88.37 |

## Launaupphæðir og kaupmáttur taxtalauna m.v. janúar 1987 = 100

| Félag                                       | Mán. og ár | Stöðug. | Taxtal. | Yfirv.l. | Önnur l. | Heildarl. | KM.T. |
|---|------------|---------|---------|----------|----------|-----------|-------|
| <b>Kennarasamband Íslands mánaðartölur:</b> |            |         |         |          |          |           |       |
| Kennarasamband Íslands grunnskólar          |            |         |         |          |          |           |       |
| 1   | 1990       | 2702.80 | 75156   | 24409    | 59       | 99624     | 94.07 |
| 2   | 1990       | 2693.23 | 75189   | 23377    | 39       | 98605     | 92.60 |
| 3   | 1990       | 2713.31 | 75166   | 25444    | 72       | 100682    | 91.81 |
| 4   | 1990       | 2702.95 | 75210   | 24851    | 47       | 100108    | 91.59 |
| 5   | 1990       | 2696.84 | 76356   | 21752    | 29       | 98137     | 92.15 |
| 6   | 1990       | 2703.98 | 76377   | 23570    | 46       | 99993     | 91.54 |
| 7   | 1990       | 2661.76 | 76838   | 1619     | 17       | 78474     | 91.49 |
| 8   | 1990       | 2663.70 | 76846   | 1620     | 17       | 78483     | 91.22 |
| 9   | 1990       | 2806.55 | 76277   | 22111    | 30       | 98418     | 90.56 |
| 10  | 1990       | 2823.19 | 76452   | 26662    | 58       | 103172    | 90.52 |
| 11  | 1990       | 2851.73 | 76503   | 28133    | 59       | 104695    | 89.96 |
| 12  | 1990       | 2841.61 | 78471   | 26498    | 22259    | 127228    | 92.06 |
| Kennarasamband Íslands framhaldsskólar      |            |         |         |          |          |           |       |
| 1   | 1990       | 286.88  | 77397   | 32647    | 165      | 110209    | 92.41 |
| 2   | 1990       | 288.48  | 77421   | 31998    | 164      | 109583    | 90.95 |
| 3   | 1990       | 283.57  | 77546   | 37556    | 185      | 115287    | 90.35 |
| 4   | 1990       | 285.02  | 77602   | 36867    | 178      | 114647    | 90.14 |
| 5   | 1990       | 278.38  | 78948   | 34855    | 143      | 113946    | 90.89 |
| 6   | 1990       | 278.67  | 79009   | 41591    | 148      | 120748    | 90.33 |
| 7   | 1990       | 271.39  | 79847   | 1224     | 0        | 81071     | 90.69 |
| 8   | 1990       | 271.42  | 79866   | 1607     | 0        | 81473     | 90.44 |
| 9   | 1990       | 299.07  | 78848   | 33928    | 84       | 112860    | 89.30 |
| 10  | 1990       | 304.64  | 79088   | 36538    | 143      | 115769    | 89.32 |
| 11  | 1990       | 305.58  | 79069   | 37834    | 136      | 117039    | 88.70 |
| 12  | 1990       | 300.72  | 81103   | 38095    | 20044    | 139242    | 90.76 |
| Kennarasamband Íslands, alls                |            |         |         |          |          |           |       |
| 1   | 1990       | 2989.68 | 75371   | 25200    | 69       | 100640    | 93.89 |
| 2   | 1990       | 2981.71 | 75405   | 24211    | 51       | 99667     | 92.43 |
| 3   | 1990       | 2986.88 | 75391   | 26590    | 83       | 102064    | 91.65 |
| 4   | 1990       | 2987.97 | 75438   | 25997    | 60       | 101495    | 91.44 |
| 5   | 1990       | 2975.22 | 76598   | 22978    | 40       | 99616     | 92.01 |
| 6   | 1990       | 2982.65 | 76623   | 25254    | 56       | 101933    | 91.41 |
| 7   | 1990       | 2933.15 | 77116   | 1582     | 15       | 78713     | 91.40 |
| 8   | 1990       | 2935.12 | 77125   | 1619     | 15       | 78759     | 91.13 |
| 9   | 1990       | 3105.62 | 76525   | 23249    | 35       | 99809     | 90.43 |
| 10  | 1990       | 3127.83 | 76709   | 27624    | 66       | 104399    | 90.40 |
| 11  | 1990       | 3157.31 | 76751   | 29072    | 66       | 105889    | 89.84 |
| 12  | 1990       | 3142.33 | 78723   | 27608    | 22047    | 128378    | 91.92 |

Launaupphæðir og kaupmáttur taxtalauna m.v. janúar 1987 = 100

| Félag                                | Mán. og ár | Stöðug. | Taxtal. | Yfirv.l. | Önnur l. | Heildarl. | K.M.T. |
|--------------------------------------|------------|---------|---------|----------|----------|-----------|--------|
| <b>Reykjavíkurborg mánaðartölur:</b> |            |         |         |          |          |           |        |
| ST.RV. Skrifstofuhópur               |            |         |         |          |          |           |        |
| 1                                    | 1990       | 635.61  | 59937   | 16850    | 3171     | 79958     | 91.62  |
| 2                                    | 1990       | 634.64  | 60877   | 18738    | 3147     | 82762     | 91.56  |
| 3                                    | 1990       | 639.00  | 60992   | 17092    | 3023     | 81107     | 90.98  |
| 4                                    | 1990       | 625.00  | 61056   | 17707    | 2873     | 81636     | 90.80  |
| 5                                    | 1990       | 644.24  | 60998   | 18260    | 2559     | 81817     | 89.90  |
| 6                                    | 1990       | 708.57  | 61660   | 16001    | 2411     | 80072     | 90.26  |
| 7                                    | 1990       | 724.14  | 61667   | 14728    | 2418     | 78813     | 89.68  |
| 8                                    | 1990       | 714.71  | 61833   | 14579    | 2361     | 78773     | 89.64  |
| 9                                    | 1990       | 636.99  | 63358   | 17512    | 2766     | 83636     | 91.87  |
| 10                                   | 1990       | 626.65  | 63788   | 17632    | 2791     | 84211     | 92.24  |
| 11                                   | 1990       | 592.59  | 64236   | 20314    | 2901     | 87451     | 92.26  |
| 12                                   | 1990       | 588.42  | 65817   | 19710    | 23700    | 109227    | 94.30  |
| ST.RV. Tækniþópur                    |            |         |         |          |          |           |        |
| 1                                    | 1990       | 786.33  | 55607   | 28252    | 8614     | 92473     | 96.44  |
| 2                                    | 1990       | 798.22  | 56434   | 27259    | 8707     | 92400     | 96.31  |
| 3                                    | 1990       | 792.91  | 56391   | 27030    | 8108     | 91529     | 95.44  |
| 4                                    | 1990       | 811.37  | 56818   | 31819    | 8589     | 97226     | 95.88  |
| 5                                    | 1990       | 827.96  | 56987   | 27534    | 7825     | 92346     | 95.30  |
| 6                                    | 1990       | 959.85  | 57143   | 22864    | 6397     | 86404     | 94.91  |
| 7                                    | 1990       | 977.79  | 57037   | 21408    | 6325     | 84770     | 94.11  |
| 8                                    | 1990       | 930.11  | 57192   | 20907    | 6217     | 84316     | 94.08  |
| 9                                    | 1990       | 842.71  | 57902   | 22166    | 7805     | 87873     | 95.26  |
| 10                                   | 1990       | 815.01  | 58218   | 25772    | 8636     | 92626     | 95.52  |
| 11                                   | 1990       | 807.04  | 59186   | 31048    | 8714     | 95948     | 96.45  |
| 12                                   | 1990       | 814.10  | 60849   | 30722    | 29695    | 121266    | 98.92  |
| ST.RV. Heilbrigðishópur              |            |         |         |          |          |           |        |
| 1                                    | 1990       | 428.25  | 58986   | 16628    | 8003     | 83617     | 91.76  |
| 2                                    | 1990       | 436.00  | 60034   | 14878    | 7618     | 82530     | 91.90  |
| 3                                    | 1990       | 439.07  | 59946   | 16327    | 8109     | 84382     | 91.01  |
| 4                                    | 1990       | 434.55  | 60124   | 26357    | 7667     | 94148     | 91.00  |
| 5                                    | 1990       | 453.46  | 59988   | 21075    | 7900     | 88963     | 89.98  |
| 6                                    | 1990       | 481.75  | 60236   | 15406    | 6580     | 82222     | 89.74  |
| 7                                    | 1990       | 465.91  | 60394   | 11899    | 6366     | 78659     | 89.39  |
| 8                                    | 1990       | 444.79  | 60527   | 15156    | 6010     | 81693     | 89.31  |
| 9                                    | 1990       | 431.75  | 61110   | 18847    | 7869     | 87826     | 90.18  |
| 10                                   | 1990       | 436.27  | 61758   | 18133    | 8307     | 88198     | 90.89  |
| 11                                   | 1990       | 407.36  | 61886   | 19793    | 8444     | 90123     | 90.46  |
| 12                                   | 1990       | 405.57  | 63389   | 21235    | 27349    | 111973    | 92.43  |
| Starfsmannafélag Reykjavíkurborgar   |            |         |         |          |          |           |        |
| 1                                    | 1990       | 1850.19 | 57877   | 21644    | 6603     | 86124     | 93.29  |
| 2                                    | 1990       | 1868.86 | 58783   | 21477    | 6565     | 86825     | 93.23  |
| 3                                    | 1990       | 1870.98 | 58797   | 21124    | 6372     | 86293     | 92.48  |
| 4                                    | 1990       | 1870.92 | 59002   | 25836    | 6465     | 91303     | 92.53  |
| 5                                    | 1990       | 1925.66 | 59035   | 22910    | 6081     | 88026     | 91.75  |
| 6                                    | 1990       | 2150.17 | 59325   | 18931    | 5124     | 83380     | 91.57  |
| 7                                    | 1990       | 2167.84 | 59305   | 17133    | 5029     | 81467     | 90.94  |
| 8                                    | 1990       | 2089.61 | 59489   | 17518    | 4854     | 81861     | 90.94  |
| 9                                    | 1990       | 1911.45 | 60445   | 19865    | 6140     | 86450     | 92.41  |
| 10                                   | 1990       | 1877.93 | 60899   | 21281    | 6609     | 88789     | 92.85  |
| 11                                   | 1990       | 1806.99 | 61451   | 24991    | 6747     | 93189     | 93.06  |
| 12                                   | 1990       | 1808.09 | 63035   | 25010    | 27218    | 115263    | 95.23  |
| ST.RV. Háskólahópur                  |            |         |         |          |          |           |        |
| 1                                    | 1990       | 418.55  | 83619   | 43756    | 8156     | 135531    | 90.49  |
| 2                                    | 1990       | 398.97  | 83554   | 45369    | 7691     | 136614    | 88.97  |
| 3                                    | 1990       | 399.09  | 83719   | 51277    | 7804     | 142800    | 88.42  |
| 4                                    | 1990       | 400.34  | 83977   | 46359    | 7944     | 138280    | 88.42  |
| 5                                    | 1990       | 406.31  | 85005   | 49022    | 8324     | 142351    | 88.70  |
| 6                                    | 1990       | 429.30  | 84450   | 49961    | 7677     | 142088    | 87.52  |
| 7                                    | 1990       | 444.99  | 87347   | 39101    | 7189     | 133637    | 89.93  |
| 8                                    | 1990       | 441.50  | 87818   | 40393    | 7530     | 135741    | 90.14  |
| 9                                    | 1990       | 443.30  | 85137   | 49375    | 7494     | 142006    | 87.40  |
| 10                                   | 1990       | 439.07  | 85577   | 46364    | 7844     | 139785    | 87.61  |
| 11                                   | 1990       | 432.37  | 85839   | 48251    | 8187     | 142277    | 87.28  |
| 12                                   | 1990       | 437.80  | 88377   | 52912    | 29151    | 170440    | 89.65  |
| Meinataeknafélag Íslands (R.borg)    |            |         |         |          |          |           |        |
| 1                                    | 1990       | 32.66   | 73873   | 38182    | 6588     | 118643    | 93.76  |
| 2                                    | 1990       | 33.31   | 74811   | 36556    | 5835     | 117202    | 93.43  |
| 3                                    | 1990       | 33.43   | 74672   | 36289    | 6296     | 117257    | 92.49  |

## Launaupphæðir og kaupmáttur taxtalauna m.v. janúar 1987 = 100

| Félag                        | Mán. og ár | Stöðug. | Taxtal. | Yfirv.l. | Önnur l. | Heildarl. | KM.T. |
|------------------------------|------------|---------|---------|----------|----------|-----------|-------|
|                              | 4 1990     | 33.13   | 75029   | 44934    | 7012     | 126975    | 92.65 |
|                              | 5 1990     | 34.41   | 75010   | 40997    | 6059     | 122066    | 91.79 |
|                              | 6 1990     | 35.21   | 76463   | 38643    | 6504     | 121610    | 92.93 |
|                              | 7 1990     | 37.22   | 77383   | 32158    | 5672     | 115213    | 93.44 |
|                              | 8 1990     | 37.07   | 76579   | 30147    | 6313     | 113039    | 92.18 |
|                              | 9 1990     | 35.21   | 75895   | 35662    | 5394     | 116951    | 91.37 |
|                              | 10 1990    | 35.10   | 76244   | 36871    | 7013     | 120128    | 91.54 |
|                              | 11 1990    | 33.17   | 76087   | 37787    | 6224     | 120098    | 90.73 |
|                              | 12 1990    | 34.54   | 77735   | 41023    | 28172    | 146930    | 92.47 |
| Fóstrufélag Íslands (R.borg) |            |         |         |          |          |           |       |
|                              | 1 1990     | 230.21  | 64208   | 10885    | 1968     | 77061     | 91.38 |
|                              | 2 1990     | 223.43  | 65358   | 11548    | 2128     | 79034     | 91.52 |
|                              | 3 1990     | 223.33  | 65349   | 11444    | 2088     | 78881     | 90.76 |
|                              | 4 1990     | 223.29  | 65495   | 11612    | 2096     | 79203     | 90.69 |
|                              | 5 1990     | 222.97  | 65921   | 13202    | 2197     | 81320     | 90.46 |
|                              | 6 1990     | 234.84  | 66604   | 12491    | 2161     | 81256     | 90.77 |
|                              | 7 1990     | 220.49  | 66708   | 12783    | 1837     | 81328     | 90.32 |
|                              | 8 1990     | 223.31  | 66962   | 10153    | 1971     | 79086     | 90.38 |
|                              | 9 1990     | 227.31  | 67122   | 12314    | 2086     | 81522     | 90.61 |
|                              | 10 1990    | 224.49  | 67351   | 15680    | 2073     | 85104     | 90.67 |
|                              | 11 1990    | 226.27  | 67280   | 14867    | 1839     | 83986     | 89.96 |
|                              | 12 1990    | 223.09  | 69062   | 15301    | 22659    | 107022    | 92.12 |
| Hjúkrunarfélag Íslands       |            |         |         |          |          |           |       |
|                              | 1 1990     | 242.76  | 76425   | 28764    | 10388    | 115577    | 89.05 |
|                              | 2 1990     | 246.27  | 76516   | 25471    | 10000    | 111987    | 87.73 |
|                              | 3 1990     | 240.20  | 76579   | 28746    | 10536    | 115861    | 87.08 |
|                              | 4 1990     | 235.79  | 76606   | 40324    | 11002    | 127932    | 86.85 |
|                              | 5 1990     | 239.72  | 76594   | 35816    | 10899    | 123309    | 86.06 |
|                              | 6 1990     | 245.91  | 77559   | 29684    | 9216     | 116459    | 86.54 |
|                              | 7 1990     | 235.66  | 77769   | 28007    | 9286     | 115062    | 86.21 |
|                              | 8 1990     | 228.65  | 78195   | 29936    | 9039     | 117170    | 86.42 |
|                              | 9 1990     | 230.96  | 78075   | 30050    | 10622    | 118747    | 86.30 |
|                              | 10 1990    | 238.92  | 78070   | 26675    | 10816    | 115561    | 86.06 |
|                              | 11 1990    | 193.90  | 78235   | 33280    | 12306    | 123821    | 85.65 |
|                              | 12 1990    | 191.26  | 80494   | 39027    | 34673    | 154194    | 87.91 |



Launaupphæðir og kaupmáttur taxtalauna m.v. janúar 1987 = 100

| Félag                              | Mán. og ár | Stöðug. | Taxtal. | Yfirv.l. | Önnur l. | Heildarl. | KM.T. |
|------------------------------------|------------|---------|---------|----------|----------|-----------|-------|
| <b>Bandalög mánaðartölur:</b>      |            |         |         |          |          |           |       |
| Starfsmannafélag Reykjavíkurborgar |            |         |         |          |          |           |       |
|                                    | 1 1990     | 1850.19 | 57877   | 21644    | 6603     | 86124     | 93.29 |
|                                    | 2 1990     | 1868.86 | 58783   | 21477    | 6565     | 86825     | 93.23 |
|                                    | 3 1990     | 1870.98 | 58797   | 21124    | 6372     | 86293     | 92.48 |
|                                    | 4 1990     | 1870.92 | 59002   | 25836    | 6465     | 91303     | 92.53 |
|                                    | 5 1990     | 1925.66 | 59035   | 22910    | 6081     | 88026     | 91.75 |
|                                    | 6 1990     | 2150.17 | 59325   | 18931    | 5124     | 83380     | 91.57 |
|                                    | 7 1990     | 2167.84 | 59305   | 17133    | 5029     | 81467     | 90.94 |
|                                    | 8 1990     | 2089.61 | 59489   | 17518    | 4854     | 81861     | 90.94 |
|                                    | 9 1990     | 1911.45 | 60445   | 19865    | 6140     | 86450     | 92.41 |
|                                    | 10 1990    | 1877.93 | 60899   | 21281    | 6609     | 88789     | 92.85 |
|                                    | 11 1990    | 1806.99 | 61451   | 24991    | 6747     | 93189     | 93.06 |
|                                    | 12 1990    | 1808.09 | 63035   | 25010    | 27218    | 115263    | 95.23 |
| BSRB félagin hjá ríkinu, alls      |            |         |         |          |          |           |       |
|                                    | 1 1990     | 7324.27 | 63523   | 29135    | 5862     | 98520     | 93.10 |
|                                    | 2 1990     | 7336.01 | 64331   | 22510    | 4556     | 91397     | 92.77 |
|                                    | 3 1990     | 7463.81 | 64605   | 25468    | 5287     | 95360     | 92.40 |
|                                    | 4 1990     | 7451.26 | 64624   | 28772    | 5431     | 98827     | 92.15 |
|                                    | 5 1990     | 7420.43 | 64457   | 24619    | 4367     | 93443     | 91.09 |
|                                    | 6 1990     | 7676.38 | 64278   | 28558    | 5120     | 97956     | 90.21 |
|                                    | 7 1990     | 8519.19 | 63921   | 23316    | 4381     | 91618     | 89.13 |
|                                    | 8 1990     | 8522.76 | 63981   | 23382    | 4385     | 91748     | 88.93 |
|                                    | 9 1990     | 7495.00 | 65797   | 26971    | 5237     | 98005     | 91.47 |
|                                    | 10 1990    | 7316.73 | 66347   | 27651    | 5502     | 99500     | 91.99 |
|                                    | 11 1990    | 7454.97 | 66406   | 29625    | 5548     | 101579    | 91.44 |
|                                    | 12 1990    | 7622.37 | 67766   | 28264    | 26499    | 122529    | 93.09 |
| BHMR félagin, alls                 |            |         |         |          |          |           |       |
|                                    | 1 1990     | 3196.81 | 85046   | 32082    | 2960     | 120088    | 90.19 |
|                                    | 2 1990     | 3289.20 | 84890   | 27026    | 1488     | 113404    | 88.58 |
|                                    | 3 1990     | 3216.99 | 85202   | 33397    | 3003     | 121602    | 88.17 |
|                                    | 4 1990     | 3232.13 | 85224   | 33377    | 3000     | 121601    | 87.93 |
|                                    | 5 1990     | 3226.81 | 86367   | 31209    | 1493     | 119069    | 88.31 |
|                                    | 6 1990     | 3280.20 | 86510   | 37041    | 3366     | 126917    | 87.85 |
|                                    | 7 1990     | 3450.44 | 89286   | 17825    | 2799     | 109910    | 90.08 |
|                                    | 8 1990     | 3451.79 | 89301   | 18022    | 2910     | 110233    | 89.82 |
|                                    | 9 1990     | 3297.94 | 86773   | 34631    | 3028     | 124432    | 87.29 |
|                                    | 10 1990    | 3299.35 | 87040   | 37163    | 3138     | 127341    | 87.32 |
|                                    | 11 1990    | 3332.87 | 87203   | 40841    | 3081     | 131125    | 86.89 |
|                                    | 12 1990    | 3320.16 | 88912   | 39831    | 23984    | 152727    | 88.37 |
| Kennarasamband Íslands, alls       |            |         |         |          |          |           |       |
|                                    | 1 1990     | 2989.68 | 75371   | 25200    | 69       | 100640    | 93.89 |
|                                    | 2 1990     | 2981.71 | 75405   | 24211    | 51       | 99667     | 92.43 |
|                                    | 3 1990     | 2996.88 | 75391   | 26590    | 83       | 102064    | 91.65 |
|                                    | 4 1990     | 2987.97 | 75438   | 25997    | 60       | 101495    | 91.44 |
|                                    | 5 1990     | 2975.22 | 76598   | 22978    | 40       | 99616     | 92.01 |
|                                    | 6 1990     | 2982.65 | 76623   | 25254    | 56       | 101933    | 91.41 |
|                                    | 7 1990     | 2933.15 | 77116   | 1582     | 15       | 78713     | 91.40 |
|                                    | 8 1990     | 2935.12 | 77125   | 1619     | 15       | 78759     | 91.13 |
|                                    | 9 1990     | 3105.62 | 76525   | 23249    | 35       | 99809     | 90.43 |
|                                    | 10 1990    | 3127.83 | 76709   | 27624    | 66       | 104399    | 90.40 |
|                                    | 11 1990    | 3157.31 | 76751   | 29072    | 66       | 105889    | 89.84 |
|                                    | 12 1990    | 3142.33 | 78723   | 27608    | 22047    | 128378    | 91.92 |

## Launaupphæðir og kaupmáttur taxtalauna m.v. janúar 1987 = 100

| Félag   | Mán. og ár | Stöðug. | Taxtal. | Yfirv.l. | Önnur l. | Heildarl. | KM.T.  |
|---|------------|---------|---------|----------|----------|-----------|--------|
| <b>Ýmsir hópar ríkisstarfsmanna mánaðartölur:</b> |            |         |         |          |          |           |        |
| Félag Íslenskra flugumferðarstjóra                |            |         |         |          |          |           |        |
| 1   | 1990       | 94.00   | 96491   | 84473    | 30876    | 211840    | 113.92 |
| 2   | 1990       | 94.00   | 96592   | 76861    | 31271    | 204724    | 112.21 |
| 3   | 1990       | 93.30   | 96331   | 85482    | 31583    | 213396    | 110.99 |
| 4   | 1990       | 94.00   | 96053   | 77443    | 31160    | 204656    | 110.34 |
| 5   | 1990       | 94.00   | 96089   | 97348    | 33485    | 226922    | 109.39 |
| 6   | 1990       | 94.46   | 95984   | 97520    | 33510    | 227014    | 108.52 |
| 7   | 1990       | 97.75   | 99298   | 103898   | 33239    | 236435    | 111.54 |
| 8   | 1990       | 97.75   | 99298   | 103898   | 33243    | 236439    | 111.19 |
| 9   | 1990       | 96.00   | 114155  | 99114    | 39675    | 252944    | 127.85 |
| 10  | 1990       | 95.92   | 114317  | 87827    | 38306    | 240450    | 127.68 |
| 11  | 1990       | 94.00   | 114255  | 90716    | 38686    | 243657    | 126.75 |
| 12  | 1990       | 96.11   | 122595  | 56912    | 57878    | 237385    | 135.67 |
| Læknafélag Íslands sjúkráhusslæknar               |            |         |         |          |          |           |        |
| 1   | 1990       | 224.52  | 125182  | 64677    | 19078    | 208937    | 90.45  |
| 2   | 1990       | 225.13  | 125452  | 32584    | 6630     | 164666    | 89.19  |
| 3   | 1990       | 220.34  | 126959  | 67069    | 16967    | 210995    | 89.53  |
| 4   | 1990       | 223.86  | 126631  | 63052    | 18477    | 208160    | 89.03  |
| 5   | 1990       | 222.53  | 128441  | 35984    | 8889     | 173314    | 89.49  |
| 6   | 1990       | 227.48  | 128170  | 66504    | 17792    | 212466    | 88.69  |
| 7   | 1990       | 230.69  | 129820  | 64480    | 17758    | 212058    | 89.24  |
| 8   | 1990       | 230.69  | 129820  | 64480    | 17758    | 212058    | 88.97  |
| 9   | 1990       | 229.59  | 129897  | 64012    | 17878    | 211787    | 89.03  |
| 10  | 1990       | 229.59  | 129897  | 64012    | 17878    | 211787    | 88.79  |
| 11  | 1990       | 237.61  | 130145  | 63393    | 16122    | 209660    | 88.36  |
| 12  | 1990       | 232.39  | 130262  | 74720    | 40522    | 245504    | 88.22  |
| Starfsmannafélag símfónihjómssveitar Íslands      |            |         |         |          |          |           |        |
| 1   | 1990       | 68.16   | 86172   | 6768     | 458      | 93398     | 100.04 |
| 2   | 1990       | 69.13   | 85781   | 4114     | 1987     | 91882     | 97.99  |
| 3   | 1990       | 68.75   | 86019   | 3518     | 1860     | 91397     | 97.45  |
| 4   | 1990       | 68.68   | 86026   | 4204     | 1069     | 91299     | 97.17  |
| 5   | 1990       | 68.69   | 87306   | 4766     | 2143     | 94215     | 97.73  |
| 6   | 1990       | 68.69   | 87306   | 4766     | 2143     | 94215     | 97.06  |
| 7   | 1990       | 63.98   | 87867   | 3554     | 25       | 91446     | 97.05  |
| 8   | 1990       | 63.98   | 87867   | 3481     | 25       | 91373     | 96.75  |
| 9   | 1990       | 68.88   | 87489   | 3275     | 514      | 91278     | 96.34  |
| 10  | 1990       | 70.71   | 87776   | 9464     | 550      | 97790     | 96.40  |
| 11  | 1990       | 70.20   | 87847   | 6254     | 1981     | 96082     | 95.82  |
| 12  | 1990       | 69.30   | 89880   | 4343     | 23717    | 117940    | 97.80  |
| Tæknifræðingafélag Íslands                        |            |         |         |          |          |           |        |
| 1   | 1990       | 126.20  | 93575   | 66091    | 2529     | 162195    | 91.45  |
| 2   | 1990       | 125.00  | 93466   | 40321    | 267      | 134054    | 89.88  |
| 3   | 1990       | 127.11  | 93382   | 67379    | 2234     | 162995    | 89.06  |
| 4   | 1990       | 127.18  | 92851   | 70806    | 4139     | 167796    | 88.29  |
| 5   | 1990       | 122.30  | 93378   | 47093    | 450      | 140921    | 87.99  |
| 6   | 1990       | 125.42  | 93077   | 78305    | 2317     | 173699    | 87.11  |
| 7   | 1990       | 128.04  | 93339   | 68113    | 3155     | 164607    | 86.79  |
| 8   | 1990       | 129.04  | 93326   | 67342    | 3130     | 163798    | 86.51  |
| 9   | 1990       | 128.40  | 93661   | 71002    | 3604     | 168267    | 86.83  |
| 10  | 1990       | 129.72  | 93421   | 63265    | 3069     | 159755    | 86.37  |
| 11  | 1990       | 129.00  | 95525   | 100338   | 2626     | 198489    | 87.72  |
| 12  | 1990       | 131.46  | 97980   | 56754    | 23640    | 178374    | 89.75  |
| Stéttarfélag verkfræðinga                         |            |         |         |          |          |           |        |
| 1   | 1990       | 194.33  | 100616  | 63424    | 1514     | 165554    | 90.99  |
| 2   | 1990       | 194.93  | 100641  | 46974    | 526      | 148141    | 89.56  |
| 3   | 1990       | 193.74  | 101032  | 68714    | 1216     | 170962    | 89.17  |
| 4   | 1990       | 196.11  | 101025  | 68031    | 1702     | 170758    | 88.89  |
| 5   | 1990       | 194.68  | 102508  | 50490    | 595      | 153593    | 89.39  |
| 6   | 1990       | 197.20  | 102317  | 71297    | 1299     | 174913    | 88.61  |
| 7   | 1990       | 210.41  | 101614  | 61291    | 1284     | 164189    | 87.43  |
| 8   | 1990       | 211.78  | 101387  | 60671    | 1276     | 163334    | 86.96  |
| 9   | 1990       | 207.62  | 102385  | 69488    | 1022     | 172895    | 87.83  |
| 10  | 1990       | 206.41  | 102680  | 63559    | 1039     | 167278    | 87.85  |
| 11  | 1990       | 209.35  | 102239  | 84964    | 1341     | 188544    | 86.87  |
| 12  | 1990       | 207.40  | 102379  | 65352    | 22895    | 190626    | 86.78  |
| Utan félaga kjaradómssróðun                       |            |         |         |          |          |           |        |
| 1   | 1990       | 191.59  | 165945  | 12593    | 3141     | 181679    | 86.25  |
| 2   | 1990       | 195.32  | 166350  | 15040    | 2358     | 183748    | 85.07  |
| 3   | 1990       | 202.32  | 167000  | 13074    | 2583     | 182657    | 84.70  |

## Launaupphæðir og kaupmáttur taxtalauna m.v. janúar 1987 = 100

| Félag                     | Mán. og ár | Stöðug. | Taxtal. | Yfirv.l. | Önnur l. | Heildarl. | KM.T. |
|---------------------------|------------|---------|---------|----------|----------|-----------|-------|
|                           | 4 1990     | 203.59  | 167057  | 16310    | 3092     | 186459    | 84.47 |
|                           | 5 1990     | 199.67  | 169416  | 12529    | 2954     | 184899    | 84.90 |
|                           | 6 1990     | 200.43  | 169487  | 20444    | 3399     | 193330    | 84.35 |
|                           | 7 1990     | 200.86  | 168680  | 17381    | 3234     | 189295    | 83.40 |
|                           | 8 1990     | 200.86  | 168680  | 17381    | 3234     | 189295    | 83.15 |
|                           | 9 1990     | 201.22  | 168390  | 16602    | 2753     | 187745    | 83.02 |
|                           | 10 1990    | 201.22  | 168390  | 16602    | 2753     | 187745    | 82.79 |
|                           | 11 1990    | 199.71  | 168916  | 19926    | 3087     | 191929    | 82.48 |
|                           | 12 1990    | 196.83  | 172897  | 17649    | 18240    | 208786    | 84.22 |
| Utan félaga ráðherraröðun |            |         |         |          |          |           |       |
|                           | 1 1990     | 217.66  | 112779  | 44746    | 1647     | 159172    | 88.16 |
|                           | 2 1990     | 217.15  | 112966  | 50305    | 1558     | 164829    | 86.89 |
|                           | 3 1990     | 222.13  | 113233  | 52398    | 1471     | 167102    | 86.38 |
|                           | 4 1990     | 218.86  | 113002  | 50267    | 1859     | 165128    | 85.94 |
|                           | 5 1990     | 219.87  | 115099  | 50395    | 1491     | 166985    | 86.75 |
|                           | 6 1990     | 223.92  | 115124  | 57466    | 1663     | 174253    | 86.17 |
|                           | 7 1990     | 228.21  | 116222  | 47179    | 1554     | 164955    | 86.43 |
|                           | 8 1990     | 229.37  | 116631  | 47730    | 1546     | 165907    | 86.47 |
|                           | 9 1990     | 229.87  | 116911  | 55907    | 1302     | 174120    | 86.69 |
|                           | 10 1990    | 232.08  | 117442  | 50659    | 1444     | 169545    | 86.84 |
|                           | 11 1990    | 232.37  | 117505  | 56092    | 1421     | 175018    | 86.30 |
|                           | 12 1990    | 232.99  | 120352  | 53107    | 23392    | 196851    | 88.18 |

## Kaupmáttur launategunda eftir ársfjórðungum m.v. 1 ársfj. 1987 = 100

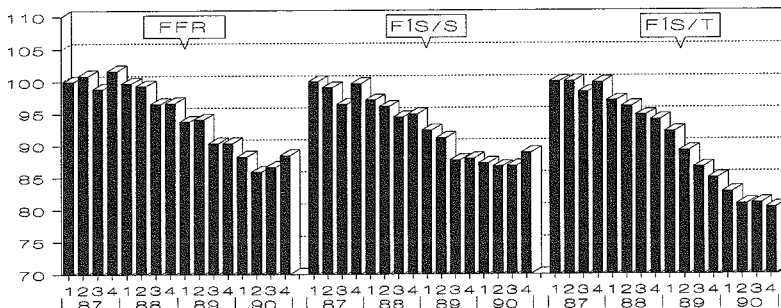
| Félag | Ársfj. og ár | Km.taxtal. | Km.yfirv.l. | Km.heildarl. |
|-------|--------------|------------|-------------|--------------|
|-------|--------------|------------|-------------|--------------|

## BSRB ríkisstafsmenn, kaupmáttur eftir ársfjórðungum:

## Félag flugmálastarfsmanna ríkisins

|   |      |        |        |        |
|---|------|--------|--------|--------|
| 1 | 1987 | 100.00 | 100.00 | 100.00 |
| 2 | 1987 | 100.95 | 108.31 | 103.55 |
| 3 | 1987 | 98.89  | 90.27  | 94.39  |
| 4 | 1987 | 101.66 | 88.36  | 96.44  |
| 1 | 1988 | 99.73  | 94.14  | 98.77  |
| 2 | 1988 | 99.34  | 94.20  | 98.56  |
| 3 | 1988 | 96.53  | 90.14  | 94.86  |
| 4 | 1988 | 96.68  | 93.99  | 97.08  |
| 1 | 1989 | 93.74  | 104.95 | 100.19 |
| 2 | 1989 | 94.07  | 94.41  | 95.94  |
| 3 | 1989 | 90.34  | 90.61  | 91.08  |
| 4 | 1989 | 90.33  | 82.82  | 88.79  |
| 1 | 1990 | 88.25  | 80.11  | 86.76  |
| 2 | 1990 | 85.86  | 72.72  | 82.29  |
| 3 | 1990 | 86.64  | 85.33  | 86.75  |
| 4 | 1990 | 88.45  | 82.49  | 92.69  |

## KAUPMATTUR TAXTALAUNA



## Félag íslenskra símamanna skrifsth.

|   |      |        |        |        |
|---|------|--------|--------|--------|
| 1 | 1987 | 100.00 | 100.00 | 100.00 |
| 2 | 1987 | 99.07  | 116.85 | 103.29 |
| 3 | 1987 | 96.45  | 92.95  | 95.26  |
| 4 | 1987 | 99.72  | 117.82 | 104.54 |
| 1 | 1988 | 97.10  | 112.62 | 101.28 |
| 2 | 1988 | 96.10  | 118.18 | 101.79 |
| 3 | 1988 | 94.46  | 99.32  | 95.71  |
| 4 | 1988 | 94.94  | 105.32 | 97.86  |
| 1 | 1989 | 92.34  | 93.34  | 92.69  |
| 2 | 1989 | 91.13  | 98.69  | 92.87  |
| 3 | 1989 | 87.70  | 79.52  | 85.52  |
| 4 | 1989 | 87.99  | 93.01  | 89.36  |
| 1 | 1990 | 87.24  | 94.69  | 89.47  |
| 2 | 1990 | 86.73  | 105.32 | 91.56  |
| 3 | 1990 | 86.85  | 82.12  | 85.51  |
| 4 | 1990 | 88.84  | 95.33  | 97.87  |

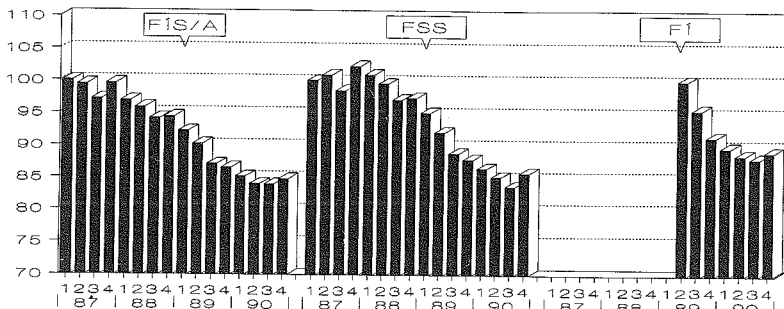
## Félag íslenskra símamanna tækniþpur

|   |      |        |        |        |
|---|------|--------|--------|--------|
| 1 | 1987 | 100.00 | 100.00 | 100.00 |
| 2 | 1987 | 100.03 | 111.91 | 104.90 |
| 3 | 1987 | 98.39  | 96.77  | 97.14  |
| 4 | 1987 | 99.84  | 101.79 | 100.30 |
| 1 | 1988 | 97.04  | 87.30  | 92.65  |
| 2 | 1988 | 96.14  | 86.02  | 91.37  |
| 3 | 1988 | 94.74  | 79.77  | 88.06  |
| 4 | 1988 | 94.04  | 78.02  | 87.54  |
| 1 | 1989 | 92.14  | 78.11  | 86.49  |
| 2 | 1989 | 89.21  | 82.69  | 86.23  |
| 3 | 1989 | 86.64  | 74.58  | 80.91  |
| 4 | 1989 | 84.93  | 65.64  | 76.33  |
| 1 | 1990 | 82.80  | 62.88  | 74.04  |

## Kaupmáttur launategunda eftir ársfjórðungum m.v. 1 ársfj. 1987 = 100

| Félag                          | Ársfj. og ár | Km.taxtal. | Km.yfirv.l. | Km.heildarl. |
|--------------------------------|--------------|------------|-------------|--------------|
|                                | 2 1990       | 80.89      | 68.71       | 75.18        |
|                                | 3 1990       | 81.01      | 69.18       | 76.42        |
|                                | 4 1990       | 80.37      | 66.98       | 79.42        |
| Félag íslenskra símamanna alls |              |            |             |              |
|                                | 1 1987       | 100.00     | 100.00      | 100.00       |
|                                | 2 1987       | 99.45      | 112.80      | 103.90       |
|                                | 3 1987       | 97.14      | 93.84       | 95.52        |
|                                | 4 1987       | 99.58      | 105.34      | 101.50       |
|                                | 1 1988       | 96.90      | 94.25       | 95.97        |
|                                | 2 1988       | 95.87      | 94.71       | 95.28        |
|                                | 3 1988       | 94.13      | 83.32       | 90.17        |
|                                | 4 1988       | 94.36      | 85.77       | 91.68        |
|                                | 1 1989       | 92.18      | 82.51       | 89.03        |
|                                | 2 1989       | 90.18      | 87.56       | 89.09        |
|                                | 3 1989       | 87.06      | 75.20       | 82.53        |
|                                | 4 1989       | 86.50      | 74.15       | 82.03        |
|                                | 1 1990       | 85.11      | 73.05       | 80.92        |
|                                | 2 1990       | 83.96      | 80.85       | 82.68        |
|                                | 3 1990       | 83.94      | 72.08       | 79.39        |
|                                | 4 1990       | 84.72      | 75.40       | 87.36        |

## KAUPMÁTTUR TAXTALAUNA



## Félag starfsmanna sjónarráðsins

|   |      |        |        |        |
|---|------|--------|--------|--------|
| 1 | 1987 | 100.00 | 100.00 | 100.00 |
| 2 | 1987 | 100.87 | 105.29 | 102.14 |
| 3 | 1987 | 98.49  | 90.01  | 96.36  |
| 4 | 1987 | 102.28 | 119.99 | 106.91 |
| 1 | 1988 | 100.89 | 110.80 | 103.54 |
| 2 | 1988 | 99.53  | 99.20  | 99.43  |
| 3 | 1988 | 97.05  | 101.42 | 98.30  |
| 4 | 1988 | 97.35  | 111.27 | 101.06 |
| 1 | 1989 | 95.05  | 102.08 | 96.95  |
| 2 | 1989 | 92.03  | 98.17  | 93.68  |
| 3 | 1989 | 88.77  | 85.07  | 87.88  |
| 4 | 1989 | 87.82  | 97.40  | 90.43  |
| 1 | 1990 | 86.45  | 94.16  | 88.61  |
| 2 | 1990 | 85.12  | 95.26  | 87.95  |
| 3 | 1990 | 83.63  | 74.87  | 81.55  |
| 4 | 1990 | 85.73  | 100.46 | 96.15  |

## Fóstrufélag Íslands

|   |      |        |        |        |
|---|------|--------|--------|--------|
| 2 | 1989 | 100.00 | 100.00 | 100.00 |
| 3 | 1989 | 95.54  | 71.47  | 91.53  |
| 4 | 1989 | 91.35  | 87.14  | 91.39  |
| 1 | 1990 | 89.71  | 75.68  | 87.93  |
| 2 | 1990 | 88.59  | 90.80  | 89.56  |
| 3 | 1990 | 88.06  | 71.56  | 86.56  |
| 4 | 1990 | 89.05  | 117.69 | 102.17 |

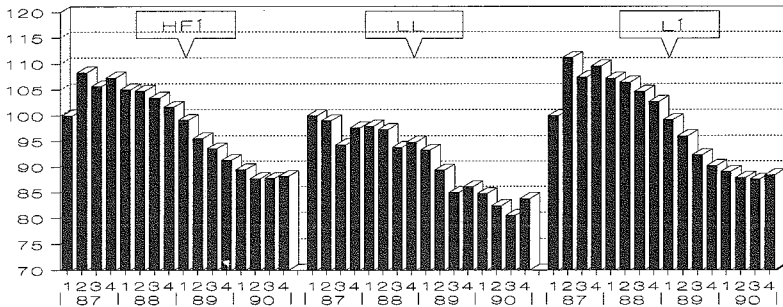
## Hjúrunarfélag Íslands

|   |      |        |        |        |
|---|------|--------|--------|--------|
| 1 | 1987 | 100.00 | 100.00 | 100.00 |
| 2 | 1987 | 108.29 | 136.91 | 113.85 |

## Kaupmáttur launategunda eftir ársfjórðungum m.v. 1 ársfj. 1987 = 100

| Félag | Ársfj. og ár | Km.taxtal. | Km.yfirv.l. | Km.heildarl. |
|-------|--------------|------------|-------------|--------------|
|       | 3 1987       | 105.62     | 97.17       | 100.35       |
|       | 4 1987       | 107.25     | 94.33       | 101.79       |
|       | 1 1988       | 104.98     | 117.19      | 107.06       |
|       | 2 1988       | 104.73     | 119.60      | 105.30       |
|       | 3 1988       | 103.39     | 86.68       | 96.56        |
|       | 4 1988       | 101.66     | 103.09      | 101.56       |
|       | 1 1989       | 99.14      | 98.56       | 98.28        |
|       | 2 1989       | 95.55      | 93.16       | 94.07        |
|       | 3 1989       | 93.57      | 81.95       | 89.27        |
|       | 4 1989       | 91.28      | 83.31       | 88.99        |
|       | 1 1990       | 89.46      | 67.50       | 83.05        |
|       | 2 1990       | 87.73      | 89.68       | 85.93        |
|       | 3 1990       | 87.74      | 84.28       | 84.93        |
|       | 4 1990       | 88.17      | 93.42       | 93.94        |

## KAUPMÁTTUR TAXTALAUNA



## Landssamband lögreglumanna

|        |        |        |        |
|--------|--------|--------|--------|
| 1 1987 | 100.00 | 100.00 | 100.00 |
| 2 1987 | 99.04  | 115.94 | 105.13 |
| 3 1987 | 94.34  | 92.33  | 91.65  |
| 4 1987 | 97.66  | 93.25  | 94.84  |
| 1 1988 | 98.01  | 91.29  | 95.48  |
| 2 1988 | 97.32  | 92.35  | 94.82  |
| 3 1988 | 93.86  | 84.03  | 88.85  |
| 4 1988 | 94.84  | 75.76  | 87.06  |
| 1 1989 | 93.32  | 84.13  | 90.70  |
| 2 1989 | 89.41  | 80.90  | 86.24  |
| 3 1989 | 85.03  | 69.86  | 77.97  |
| 4 1989 | 86.08  | 61.19  | 75.95  |
| 1 1990 | 84.78  | 74.35  | 81.52  |
| 2 1990 | 82.45  | 74.61  | 80.12  |
| 3 1990 | 80.56  | 65.26  | 73.84  |
| 4 1990 | 83.79  | 68.75  | 81.97  |

## Ljósmeðrafélag Íslands

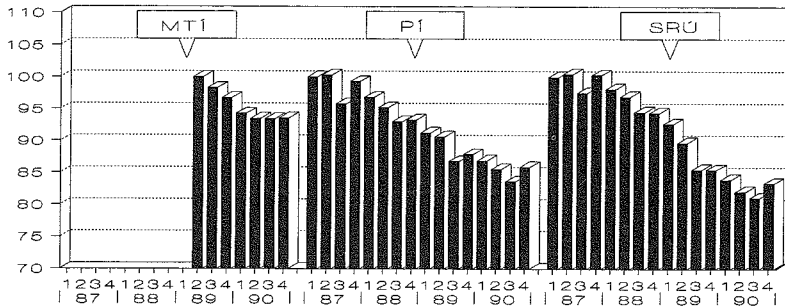
|        |        |        |        |
|--------|--------|--------|--------|
| 1 1987 | 100.00 | 100.00 | 100.00 |
| 2 1987 | 111.20 | 215.54 | 122.48 |
| 3 1987 | 107.42 | 124.96 | 104.71 |
| 4 1987 | 109.52 | 109.15 | 105.46 |
| 1 1988 | 107.20 | 141.16 | 110.84 |
| 2 1988 | 106.40 | 201.99 | 114.48 |
| 3 1988 | 104.66 | 124.13 | 102.33 |
| 4 1988 | 102.69 | 145.98 | 107.19 |
| 1 1989 | 99.22  | 162.20 | 105.94 |
| 2 1989 | 96.07  | 148.87 | 100.95 |
| 3 1989 | 92.35  | 106.93 | 91.60  |
| 4 1989 | 90.24  | 121.61 | 93.62  |
| 1 1990 | 89.02  | 82.95  | 85.52  |
| 2 1990 | 87.84  | 147.92 | 92.00  |
| 3 1990 | 87.58  | 99.50  | 86.67  |
| 4 1990 | 88.37  | 135.91 | 99.51  |

## Meinataeknafélag Íslands

Kaupmáttur launategunda eftir ársfjórðungum m.v. 1 ársfj. 1987 = 100

| Félag | Ársfj. og ár | Km.taxtal. | Km.yfirv.l. | Km.heildarl. |
|-------|--------------|------------|-------------|--------------|
|-------|--------------|------------|-------------|--------------|

## KAUPMATTUR TAXTALAUNA

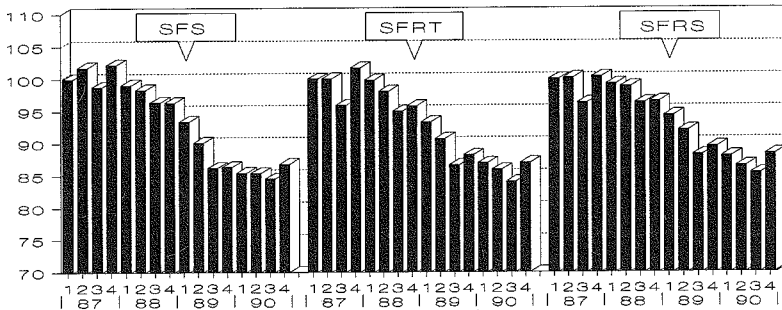


|                                  |   |      |        |        |        |
|----------------------------------|---|------|--------|--------|--------|
|                                  | 2 | 1989 | 100.00 | 100.00 | 100.00 |
|                                  | 3 | 1989 | 98.30  | 94.10  | 97.00  |
|                                  | 4 | 1989 | 96.73  | 97.71  | 97.17  |
|                                  | 1 | 1990 | 94.25  | 79.91  | 89.02  |
|                                  | 2 | 1990 | 93.47  | 84.26  | 90.03  |
|                                  | 3 | 1990 | 93.38  | 86.37  | 90.36  |
|                                  | 4 | 1990 | 93.55  | 86.96  | 96.87  |
| Póstmannafélag Íslands           |   |      |        |        |        |
|                                  | 1 | 1987 | 100.00 | 100.00 | 100.00 |
|                                  | 2 | 1987 | 100.30 | 77.97  | 92.06  |
|                                  | 3 | 1987 | 95.76  | 66.90  | 85.09  |
|                                  | 4 | 1987 | 99.31  | 101.58 | 99.75  |
|                                  | 1 | 1988 | 96.81  | 99.76  | 97.57  |
|                                  | 2 | 1988 | 95.20  | 75.99  | 87.89  |
|                                  | 3 | 1988 | 93.02  | 60.83  | 81.39  |
|                                  | 4 | 1988 | 93.29  | 79.17  | 88.52  |
|                                  | 1 | 1989 | 91.24  | 84.01  | 88.84  |
|                                  | 2 | 1989 | 90.65  | 62.71  | 80.58  |
|                                  | 3 | 1989 | 86.83  | 51.51  | 74.21  |
|                                  | 4 | 1989 | 87.90  | 69.02  | 81.69  |
|                                  | 1 | 1990 | 86.92  | 80.09  | 84.61  |
|                                  | 2 | 1990 | 85.58  | 58.88  | 75.91  |
|                                  | 3 | 1990 | 83.66  | 40.35  | 68.39  |
|                                  | 4 | 1990 | 85.92  | 67.94  | 86.37  |
| Starfsmannafélag ríkisútvarpsins |   |      |        |        |        |
|                                  | 1 | 1987 | 100.00 | 100.00 | 100.00 |
|                                  | 2 | 1987 | 100.47 | 127.26 | 107.73 |
|                                  | 3 | 1987 | 97.51  | 88.39  | 95.50  |
|                                  | 4 | 1987 | 100.33 | 99.07  | 101.27 |
|                                  | 1 | 1988 | 98.13  | 92.44  | 97.76  |
|                                  | 2 | 1988 | 96.92  | 84.32  | 94.42  |
|                                  | 3 | 1988 | 94.47  | 69.65  | 88.43  |
|                                  | 4 | 1988 | 94.36  | 72.12  | 89.64  |
|                                  | 1 | 1989 | 92.63  | 80.77  | 90.29  |
|                                  | 2 | 1989 | 89.71  | 80.49  | 87.90  |
|                                  | 3 | 1989 | 85.53  | 64.02  | 80.43  |
|                                  | 4 | 1989 | 85.48  | 98.34  | 89.89  |
|                                  | 1 | 1990 | 83.96  | 62.74  | 78.41  |
|                                  | 2 | 1990 | 82.06  | 80.80  | 81.92  |
|                                  | 3 | 1990 | 81.09  | 62.62  | 76.49  |
|                                  | 4 | 1990 | 83.38  | 80.32  | 88.31  |
| Starfsmannafélag sjónvarpsins    |   |      |        |        |        |
|                                  | 1 | 1987 | 100.00 | 100.00 | 100.00 |
|                                  | 2 | 1987 | 101.77 | 97.44  | 99.88  |
|                                  | 3 | 1987 | 98.79  | 65.30  | 82.85  |
|                                  | 4 | 1987 | 102.22 | 83.62  | 93.34  |
|                                  | 1 | 1988 | 99.10  | 75.15  | 87.71  |
|                                  | 2 | 1988 | 98.36  | 67.35  | 83.54  |
|                                  | 3 | 1988 | 96.38  | 61.79  | 79.40  |

## Kaupmáttur launategunda eftir ársfjórðungum m.v. 1 ársfj. 1987 = 100

| Félag | Ársfj. og ár | Km.taxtal. | Km.yfirv.l. | Km.heildarl. |
|-------|--------------|------------|-------------|--------------|
|       | 4 1988       | 96.31      | 79.37       | 88.01        |
|       | 1 1989       | 93.38      | 60.80       | 78.27        |
|       | 2 1989       | 90.09      | 68.96       | 79.83        |
|       | 3 1989       | 86.18      | 44.59       | 66.62        |
|       | 4 1989       | 86.32      | 57.76       | 73.17        |
|       | 1 1990       | 85.39      | 61.58       | 74.26        |
|       | 2 1990       | 85.37      | 65.04       | 75.47        |
|       | 3 1990       | 84.50      | 48.74       | 67.75        |
|       | 4 1990       | 86.76      | 69.95       | 82.92        |

## KAUPMÁTTUR TAXTALAUNA



## Starfsmannafélag ríkisstofnana T

|   |      |        |        |        |
|---|------|--------|--------|--------|
| 1 | 1987 | 100.00 | 100.00 | 100.00 |
| 2 | 1987 | 100.03 | 108.24 | 102.60 |
| 3 | 1987 | 95.92  | 88.74  | 92.53  |
| 4 | 1987 | 101.75 | 110.71 | 104.70 |
| 1 | 1988 | 99.85  | 102.75 | 100.76 |
| 2 | 1988 | 98.08  | 100.04 | 98.27  |
| 3 | 1988 | 94.97  | 94.44  | 94.26  |
| 4 | 1988 | 95.78  | 105.98 | 99.32  |
| 1 | 1989 | 93.32  | 97.01  | 94.77  |
| 2 | 1989 | 90.68  | 94.69  | 91.69  |
| 3 | 1989 | 86.63  | 86.33  | 86.03  |
| 4 | 1989 | 88.15  | 95.34  | 90.48  |
| 1 | 1990 | 86.93  | 86.38  | 86.42  |
| 2 | 1990 | 85.91  | 87.97  | 86.11  |
| 3 | 1990 | 84.05  | 84.94  | 83.70  |
| 4 | 1990 | 86.94  | 96.76  | 96.09  |

## Starfsmannafélag ríkisstofnana S

|   |      |        |        |        |
|---|------|--------|--------|--------|
| 1 | 1987 | 100.00 | 100.00 | 100.00 |
| 2 | 1987 | 100.16 | 103.55 | 101.03 |
| 3 | 1987 | 96.33  | 85.68  | 93.90  |
| 4 | 1987 | 100.35 | 106.98 | 101.86 |
| 1 | 1988 | 99.24  | 113.18 | 102.53 |
| 2 | 1988 | 98.84  | 104.24 | 100.14 |
| 3 | 1988 | 96.33  | 91.88  | 95.31  |
| 4 | 1988 | 96.56  | 103.36 | 98.21  |
| 1 | 1989 | 94.33  | 99.52  | 95.63  |
| 2 | 1989 | 92.01  | 98.11  | 93.53  |
| 3 | 1989 | 88.21  | 78.52  | 86.08  |
| 4 | 1989 | 89.45  | 93.95  | 90.59  |
| 1 | 1990 | 87.98  | 89.10  | 88.26  |
| 2 | 1990 | 86.49  | 88.28  | 86.97  |
| 3 | 1990 | 85.37  | 79.96  | 84.24  |
| 4 | 1990 | 88.33  | 95.42  | 97.26  |

## Starfsmannafélag ríkisstofnana H

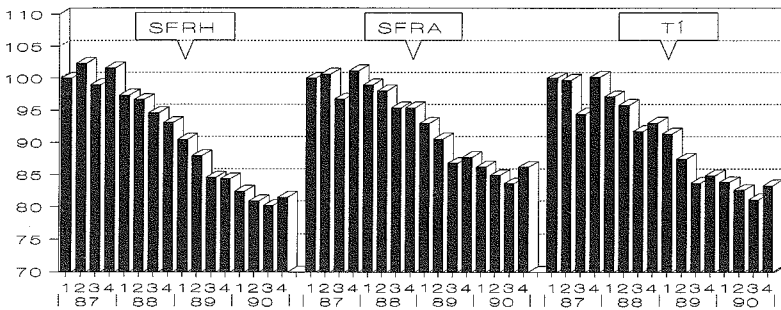
|   |      |        |        |        |
|---|------|--------|--------|--------|
| 1 | 1987 | 100.00 | 100.00 | 100.00 |
| 2 | 1987 | 102.34 | 117.11 | 104.97 |
| 3 | 1987 | 98.97  | 83.89  | 92.79  |
| 4 | 1987 | 101.61 | 93.82  | 97.67  |
| 1 | 1988 | 97.33  | 109.60 | 99.82  |



## Kaupmáttur launategunda eftir ársfjórðungum m.v. 1 ársfj. 1987 =100

| Félag | Ársfj. og ár | Km.taxtal. | Km.yfirv.l. | Km.heildarl. |
|-------|--------------|------------|-------------|--------------|
|       | 2 1988       | 96.64      | 104.72      | 96.39        |
|       | 3 1988       | 94.59      | 76.12       | 88.22        |
|       | 4 1988       | 93.07      | 90.40       | 92.60        |
|       | 1 1989       | 90.45      | 87.88       | 89.71        |
|       | 2 1989       | 87.94      | 82.55       | 86.37        |
|       | 3 1989       | 84.60      | 59.39       | 77.40        |
|       | 4 1989       | 84.36      | 69.61       | 81.10        |
|       | 1 1990       | 82.45      | 60.24       | 76.73        |
|       | 2 1990       | 80.98      | 82.74       | 79.98        |
|       | 3 1990       | 80.25      | 62.14       | 74.90        |
|       | 4 1990       | 81.50      | 77.85       | 86.51        |

## KAUPMÁTTUR TAXTALAUNA



## Starfsmannafélag ríkisstofnana alls

|   |      |        |        |        |
|---|------|--------|--------|--------|
| 1 | 1987 | 100.00 | 100.00 | 100.00 |
| 2 | 1987 | 100.63 | 108.41 | 102.58 |
| 3 | 1987 | 96.78  | 87.05  | 93.14  |
| 4 | 1987 | 101.16 | 105.38 | 101.85 |
| 1 | 1988 | 98.97  | 106.75 | 101.05 |
| 2 | 1988 | 98.02  | 101.76 | 98.39  |
| 3 | 1988 | 95.40  | 89.12  | 93.01  |
| 4 | 1988 | 95.39  | 100.73 | 97.04  |
| 1 | 1989 | 92.97  | 94.78  | 93.61  |
| 2 | 1989 | 90.56  | 92.89  | 90.96  |
| 3 | 1989 | 86.80  | 78.59  | 83.99  |
| 4 | 1989 | 87.70  | 88.79  | 88.06  |
| 1 | 1990 | 86.22  | 80.53  | 84.37  |
| 2 | 1990 | 84.91  | 85.71  | 84.58  |
| 3 | 1990 | 83.63  | 77.66  | 81.50  |
| 4 | 1990 | 86.13  | 90.79  | 93.74  |

## Tollvarðafélag Íslands

|   |      |        |        |        |
|---|------|--------|--------|--------|
| 1 | 1987 | 100.00 | 100.00 | 100.00 |
| 2 | 1987 | 99.68  | 118.76 | 105.92 |
| 3 | 1987 | 94.44  | 93.59  | 94.26  |
| 4 | 1987 | 100.18 | 96.88  | 98.34  |
| 1 | 1988 | 97.11  | 103.67 | 99.52  |
| 2 | 1988 | 95.77  | 92.40  | 94.30  |
| 3 | 1988 | 91.77  | 78.73  | 87.13  |
| 4 | 1988 | 93.02  | 84.59  | 89.85  |
| 1 | 1989 | 91.33  | 85.52  | 88.99  |
| 2 | 1989 | 87.47  | 81.33  | 84.85  |
| 3 | 1989 | 83.73  | 69.51  | 78.44  |
| 4 | 1989 | 84.89  | 66.71  | 78.93  |
| 1 | 1990 | 83.83  | 69.49  | 79.34  |
| 2 | 1990 | 82.61  | 79.19  | 81.27  |
| 3 | 1990 | 81.16  | 65.37  | 74.76  |
| 4 | 1990 | 83.30  | 70.00  | 82.84  |

## BSRB félagin hjá ríkinu, alls

|   |      |        |        |        |
|---|------|--------|--------|--------|
| 1 | 1987 | 100.00 | 100.00 | 100.00 |
| 2 | 1987 | 100.88 | 109.30 | 103.09 |
| 3 | 1987 | 97.09  | 87.38  | 92.90  |

## Kaupmáttur launategunda eftir ársfjórðungum m.v. 1 ársfj. 1987 =100

| Félag | Ársfj. og ár | Km.taxtal. | Km.yfirv.l. | Km.heildarl. |
|-------|--------------|------------|-------------|--------------|
|       | 4 1987       | 100.93     | 100.72      | 100.28       |
|       | 1 1988       | 98.95      | 100.03      | 99.35        |
|       | 2 1988       | 97.78      | 95.53       | 96.43        |
|       | 3 1988       | 95.18      | 82.89       | 90.57        |
|       | 4 1988       | 95.30      | 89.91       | 93.81        |
|       | 1 1989       | 93.16      | 88.68       | 92.02        |
|       | 2 1989       | 90.77      | 85.74       | 88.98        |
|       | 3 1989       | 87.16      | 72.57       | 82.04        |
|       | 4 1989       | 87.66      | 77.37       | 84.57        |
|       | 1 1990       | 86.12      | 74.90       | 82.47        |
|       | 2 1990       | 84.62      | 77.91       | 82.07        |
|       | 3 1990       | 83.35      | 68.60       | 78.14        |
|       | 4 1990       | 85.59      | 79.27       | 89.36        |

Kaupmáttur launategunda eftir ársfjórðungum m.v. 1 ársfj. 1987 = 100

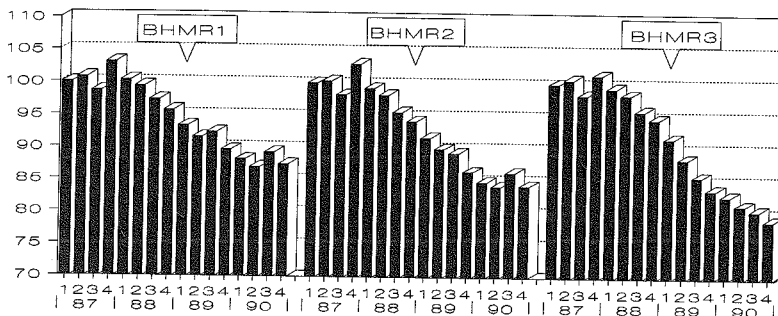
| Félag | Ársfj. og ár | Km.taxtal. | Km.yfirv.l. | Km.heildarl. |
|-------|--------------|------------|-------------|--------------|
|-------|--------------|------------|-------------|--------------|

**BHMR hópar, kaupmáttur eftir ársfjórðungum:**

**BHMR hópur 1 (HÍK/G)**

|   |      |        |        |        |
|---|------|--------|--------|--------|
| 1 | 1987 | 100.00 | 100.00 | 100.00 |
| 2 | 1987 | 100.78 | 69.00  | 91.48  |
| 3 | 1987 | 98.67  | 23.13  | 76.62  |
| 4 | 1987 | 103.16 | 101.82 | 103.03 |
| 1 | 1988 | 100.31 | 97.88  | 100.01 |
| 2 | 1988 | 99.42  | 63.41  | 89.05  |
| 3 | 1988 | 95.76  | 28.99  | 77.39  |
| 4 | 1988 | 97.34  | 104.90 | 98.66  |
| 1 | 1989 | 93.33  | 99.45  | 95.50  |
| 2 | 1989 | 91.58  | 42.45  | 77.32  |
| 3 | 1989 | 92.38  | 32.08  | 74.85  |
| 4 | 1989 | 89.62  | 95.44  | 91.63  |
| 1 | 1990 | 88.14  | 91.63  | 89.27  |
| 2 | 1990 | 86.98  | 83.78  | 86.06  |
| 3 | 1990 | 89.25  | 28.90  | 71.64  |
| 4 | 1990 | 87.42  | 91.85  | 95.16  |

**KAUPMATTUR TAXTALAUNA**



**BHMR hópur 2 (HÍK/F)**

|   |      |        |        |        |
|---|------|--------|--------|--------|
| 1 | 1987 | 100.00 | 100.00 | 100.00 |
| 2 | 1987 | 100.35 | 112.91 | 104.93 |
| 3 | 1987 | 98.26  | 26.48  | 71.73  |
| 4 | 1987 | 102.95 | 110.01 | 105.54 |
| 1 | 1988 | 99.27  | 78.79  | 91.75  |
| 2 | 1988 | 98.24  | 77.58  | 90.59  |
| 3 | 1988 | 95.61  | 29.77  | 71.28  |
| 4 | 1988 | 94.17  | 110.90 | 100.30 |
| 1 | 1989 | 91.59  | 81.98  | 88.05  |
| 2 | 1989 | 89.89  | 50.58  | 75.32  |
| 3 | 1989 | 89.24  | 50.47  | 74.88  |
| 4 | 1989 | 86.27  | 80.61  | 84.15  |
| 1 | 1990 | 84.76  | 72.44  | 80.19  |
| 2 | 1990 | 84.04  | 79.67  | 82.44  |
| 3 | 1990 | 86.20  | 30.18  | 65.46  |
| 4 | 1990 | 84.17  | 84.82  | 89.07  |

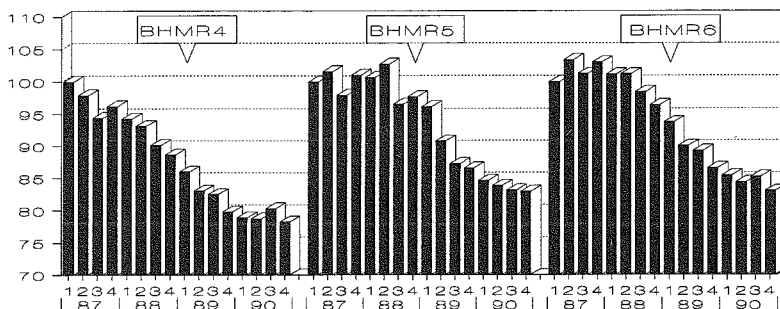
**BHMR hópur 3 (FH, KKHÍ, FTK)**

|   |      |        |        |        |
|---|------|--------|--------|--------|
| 1 | 1987 | 100.00 | 100.00 | 100.00 |
| 2 | 1987 | 100.65 | 90.89  | 99.61  |
| 3 | 1987 | 98.30  | 44.64  | 92.77  |
| 4 | 1987 | 101.35 | 117.23 | 102.94 |
| 1 | 1988 | 99.37  | 77.13  | 97.08  |
| 2 | 1988 | 98.33  | 95.50  | 98.00  |
| 3 | 1988 | 95.85  | 57.79  | 91.91  |
| 4 | 1988 | 94.67  | 133.62 | 98.62  |
| 1 | 1989 | 91.63  | 116.47 | 94.14  |
| 2 | 1989 | 88.47  | 109.88 | 90.63  |
| 3 | 1989 | 85.65  | 64.89  | 83.49  |
| 4 | 1989 | 83.68  | 115.80 | 86.94  |
| 1 | 1990 | 82.71  | 87.65  | 83.19  |
| 2 | 1990 | 81.26  | 88.17  | 82.13  |

## Kaupmáttur launategunda eftir ársfjórðungum m.v. 1 ársfj. 1987 = 100

| Félag                                 | Ársfj. og ár | Km.taxtal. | Km.yfir.l. | Km.heildarl. |
|---------------------------------------|--------------|------------|------------|--------------|
|                                       | 3 1990       | 80.50      | 64.00      | 78.78        |
|                                       | 4 1990       | 78.96      | 224.10     | 98.61        |
| <b>BHMR hópur 4 (FHH,FÍSP,IÍ,SÍF)</b> |              |            |            |              |
|                                       | 1 1987       | 100.00     | 100.00     | 100.00       |
|                                       | 2 1987       | 97.91      | 109.05     | 100.81       |
|                                       | 3 1987       | 94.41      | 88.57      | 92.16        |
|                                       | 4 1987       | 96.25      | 85.51      | 92.77        |
|                                       | 1 1988       | 94.29      | 95.88      | 94.67        |
|                                       | 2 1988       | 93.17      | 89.57      | 91.41        |
|                                       | 3 1988       | 90.18      | 72.15      | 84.72        |
|                                       | 4 1988       | 88.66      | 84.55      | 89.47        |
|                                       | 1 1989       | 86.01      | 84.69      | 86.21        |
|                                       | 2 1989       | 83.05      | 82.23      | 83.27        |
|                                       | 3 1989       | 82.51      | 79.26      | 81.45        |
|                                       | 4 1989       | 79.81      | 77.08      | 79.71        |
|                                       | 1 1990       | 78.88      | 66.15      | 75.56        |
|                                       | 2 1990       | 78.75      | 80.18      | 78.30        |
|                                       | 3 1990       | 80.33      | 71.13      | 77.48        |
|                                       | 4 1990       | 78.26      | 83.35      | 84.76        |

## KAUPMATTUR TAXTALAUNA

**BHMR hópur 5 (LÆÍ,DÍ,SÍ,PÍ)**

|   |      |        |        |        |
|---|------|--------|--------|--------|
| 1 | 1987 | 100.00 | 100.00 | 100.00 |
| 2 | 1987 | 101.59 | 112.07 | 103.21 |
| 3 | 1987 | 98.01  | 87.35  | 92.07  |
| 4 | 1987 | 101.03 | 115.62 | 99.92  |
| 1 | 1988 | 100.69 | 102.69 | 98.74  |
| 2 | 1988 | 102.70 | 113.85 | 99.67  |
| 3 | 1988 | 96.59  | 89.42  | 91.41  |
| 4 | 1988 | 97.71  | 114.38 | 98.78  |
| 1 | 1989 | 96.19  | 135.48 | 96.38  |
| 2 | 1989 | 90.81  | 109.47 | 92.29  |
| 3 | 1989 | 87.27  | 82.92  | 84.47  |
| 4 | 1989 | 86.57  | 92.17  | 88.89  |
| 1 | 1990 | 84.64  | 79.67  | 82.27  |
| 2 | 1990 | 83.85  | 101.07 | 84.70  |
| 3 | 1990 | 83.15  | 85.06  | 83.36  |
| 4 | 1990 | 82.96  | 113.45 | 90.88  |

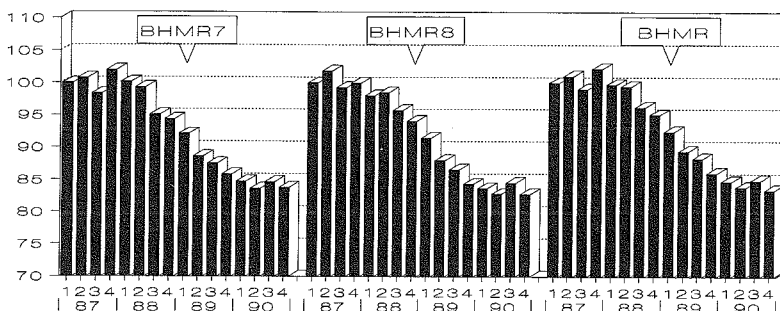
**BHMR hópur 6 (KFVH,FP,SLÍR,FHSS)**

|   |      |        |        |        |
|---|------|--------|--------|--------|
| 1 | 1987 | 100.00 | 100.00 | 100.00 |
| 2 | 1987 | 103.39 | 110.17 | 105.75 |
| 3 | 1987 | 101.26 | 92.36  | 98.23  |
| 4 | 1987 | 103.02 | 116.53 | 107.04 |
| 1 | 1988 | 101.19 | 112.41 | 104.68 |
| 2 | 1988 | 101.21 | 108.64 | 103.57 |
| 3 | 1988 | 98.48  | 103.21 | 99.56  |
| 4 | 1988 | 96.46  | 113.29 | 101.25 |
| 1 | 1989 | 93.77  | 104.71 | 96.89  |
| 2 | 1989 | 90.06  | 107.59 | 95.21  |
| 3 | 1989 | 89.27  | 89.17  | 88.66  |
| 4 | 1989 | 86.57  | 98.84  | 89.76  |
| 1 | 1990 | 85.42  | 98.62  | 89.08  |

Kaupmáttur launategunda eftir árstjóðungum m.v. 1 ársfj. 1987 = 100

| Félag                               | Ársfj. og ár | Km.taxtal. | Km.yfirv.l. | Km.heildarl. |
|-------------------------------------|--------------|------------|-------------|--------------|
|                                     | 2 1990       | 84.43      | 99.73       | 88.99        |
|                                     | 3 1990       | 85.26      | 90.88       | 86.32        |
|                                     | 4 1990       | 83.04      | 101.44      | 92.61        |
| <b>BHMR hópur 7 (KA,FÍN,MNÍ,FF)</b> |              |            |             |              |
|                                     | 1 1987       | 100.00     | 100.00      | 100.00       |
|                                     | 2 1987       | 100.75     | 114.34      | 105.22       |
|                                     | 3 1987       | 98.38      | 103.32      | 99.98        |
|                                     | 4 1987       | 101.98     | 101.06      | 102.00       |
|                                     | 1 1988       | 100.14     | 97.61       | 100.04       |
|                                     | 2 1988       | 99.29      | 100.63      | 99.88        |
|                                     | 3 1988       | 95.07      | 105.11      | 98.28        |
|                                     | 4 1988       | 94.30      | 103.80      | 97.55        |
|                                     | 1 1989       | 92.05      | 93.89       | 92.95        |
|                                     | 2 1989       | 88.58      | 98.39       | 91.66        |
|                                     | 3 1989       | 87.51      | 99.01       | 90.97        |
|                                     | 4 1989       | 85.83      | 98.72       | 89.77        |
|                                     | 1 1990       | 84.72      | 89.02       | 85.78        |
|                                     | 2 1990       | 83.66      | 95.78       | 87.07        |
|                                     | 3 1990       | 84.68      | 93.48       | 87.13        |
|                                     | 4 1990       | 83.78      | 99.60       | 93.13        |

KAUPMATTUR TAXTALAUNA



BHMR hópur 8 (FB,FÍF,ÚTG)

|   |      |        |        |        |
|---|------|--------|--------|--------|
| 1 | 1987 | 100.00 | 100.00 | 100.00 |
| 2 | 1987 | 101.84 | 104.05 | 102.17 |
| 3 | 1987 | 99.31  | 86.57  | 96.38  |
| 4 | 1987 | 99.96  | 101.44 | 100.12 |
| 1 | 1988 | 98.02  | 89.13  | 96.03  |
| 2 | 1988 | 98.47  | 99.28  | 98.59  |
| 3 | 1988 | 95.73  | 88.24  | 93.83  |
| 4 | 1988 | 94.05  | 101.33 | 95.48  |
| 1 | 1989 | 91.41  | 93.29  | 91.76  |
| 2 | 1989 | 87.99  | 98.73  | 90.13  |
| 3 | 1989 | 86.56  | 89.27  | 86.90  |
| 4 | 1989 | 84.37  | 96.86  | 86.89  |
| 1 | 1990 | 83.70  | 88.05  | 84.39  |
| 2 | 1990 | 82.82  | 99.82  | 86.26  |
| 3 | 1990 | 84.53  | 85.47  | 84.43  |
| 4 | 1990 | 82.80  | 103.28 | 92.68  |

BHMR félagin, alls

|   |      |        |        |        |
|---|------|--------|--------|--------|
| 1 | 1987 | 100.00 | 100.00 | 100.00 |
| 2 | 1987 | 101.03 | 101.58 | 101.23 |
| 3 | 1987 | 99.01  | 56.50  | 86.89  |
| 4 | 1987 | 102.21 | 105.58 | 102.64 |
| 1 | 1988 | 99.73  | 88.70  | 96.65  |
| 2 | 1988 | 99.42  | 87.08  | 95.55  |
| 3 | 1988 | 96.20  | 61.41  | 86.19  |
| 4 | 1988 | 95.02  | 107.53 | 98.28  |
| 1 | 1989 | 92.43  | 90.15  | 91.75  |
| 2 | 1989 | 89.41  | 73.54  | 85.02  |
| 3 | 1989 | 88.25  | 67.33  | 82.27  |
| 4 | 1989 | 86.00  | 89.18  | 86.96  |

## Kaupmáttur launategunda eftir ársfjórðungum m.v. 1 ársfj. 1987 = 100

| Félag | Ársfj. og ár | Km.taxtal. | Km.yfirv.l. | Km.heildarl. |
|-------|--------------|------------|-------------|--------------|
|       | 1 1990       | 84.75      | 80.28       | 83.21        |
|       | 2 1990       | 83.86      | 86.39       | 84.29        |
|       | 3 1990       | 84.86      | 58.50       | 77.64        |
|       | 4 1990       | 83.38      | 97.65       | 91.94        |

## Kaupmáttur launategunda eftir ársfjórðungum m.v. 1 ársfj. 1987 = 100

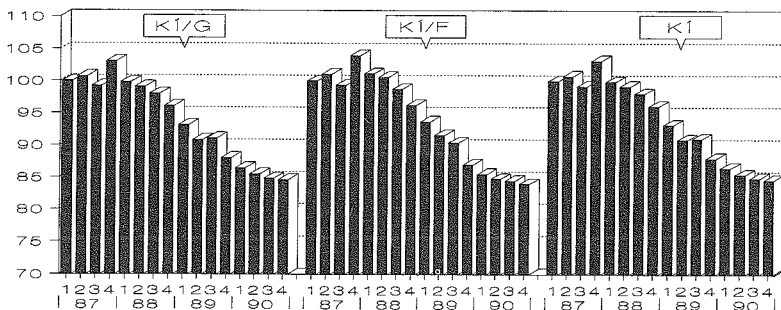
| Félag | Ársfj. og ár | Km.taxtal. | Km.yfirv.l. | Km.heildarl. |
|-------|--------------|------------|-------------|--------------|
|-------|--------------|------------|-------------|--------------|

## K.Í. kaupmáttur eftir ársfjórðungum:

## Kennarasamband Íslands grunnskólur

|   |      |        |        |        |
|---|------|--------|--------|--------|
| 1 | 1987 | 100.00 | 100.00 | 100.00 |
| 2 | 1987 | 100.71 | 63.01  | 91.38  |
| 3 | 1987 | 99.21  | 23.67  | 80.51  |
| 4 | 1987 | 103.07 | 106.81 | 104.07 |
| 1 | 1988 | 99.80  | 106.10 | 101.47 |
| 2 | 1988 | 99.12  | 64.75  | 90.65  |
| 3 | 1988 | 97.99  | 28.92  | 80.90  |
| 4 | 1988 | 96.07  | 104.41 | 98.17  |
| 1 | 1989 | 93.10  | 103.35 | 95.68  |
| 2 | 1989 | 90.81  | 64.20  | 84.25  |
| 3 | 1989 | 91.07  | 29.45  | 75.82  |
| 4 | 1989 | 88.06  | 90.79  | 88.78  |
| 1 | 1990 | 86.51  | 85.71  | 86.29  |
| 2 | 1990 | 85.53  | 80.33  | 84.21  |
| 3 | 1990 | 84.90  | 29.37  | 71.15  |
| 4 | 1990 | 84.68  | 90.75  | 92.27  |

## KAUPMÁTTUR TAXTALAUNA



## Kennarasamband Íslands framhaldsskólur

|   |      |        |        |        |
|---|------|--------|--------|--------|
| 1 | 1987 | 100.00 | 100.00 | 100.00 |
| 2 | 1987 | 101.07 | 89.92  | 97.63  |
| 3 | 1987 | 99.36  | 29.23  | 77.86  |
| 4 | 1987 | 103.93 | 113.34 | 106.77 |
| 1 | 1988 | 101.15 | 99.77  | 100.66 |
| 2 | 1988 | 100.59 | 85.61  | 95.90  |
| 3 | 1988 | 98.72  | 34.68  | 79.09  |
| 4 | 1988 | 96.22  | 106.35 | 99.25  |
| 1 | 1989 | 93.66  | 109.62 | 98.43  |
| 2 | 1989 | 91.52  | 85.39  | 89.53  |
| 3 | 1989 | 90.37  | 36.85  | 73.96  |
| 4 | 1989 | 86.98  | 92.66  | 88.68  |
| 1 | 1990 | 85.50  | 85.75  | 85.53  |
| 2 | 1990 | 84.77  | 93.03  | 87.22  |
| 3 | 1990 | 84.46  | 31.43  | 68.18  |
| 4 | 1990 | 83.96  | 90.05  | 90.54  |

## Kennarasamband Íslands, alls

|   |      |        |        |        |
|---|------|--------|--------|--------|
| 1 | 1987 | 100.00 | 100.00 | 100.00 |
| 2 | 1987 | 100.73 | 66.27  | 91.99  |
| 3 | 1987 | 99.19  | 24.26  | 80.17  |
| 4 | 1987 | 103.12 | 107.28 | 104.24 |
| 1 | 1988 | 99.88  | 104.95 | 101.26 |
| 2 | 1988 | 99.18  | 66.57  | 90.92  |
| 3 | 1988 | 97.98  | 29.36  | 80.57  |
| 4 | 1988 | 96.03  | 104.13 | 98.12  |
| 1 | 1989 | 93.12  | 103.76 | 95.85  |
| 2 | 1989 | 90.84  | 66.42  | 84.65  |
| 3 | 1989 | 90.98  | 30.27  | 75.58  |
| 4 | 1989 | 87.95  | 90.96  | 88.75  |
| 1 | 1990 | 86.41  | 85.73  | 86.22  |

## Kaupmáttur launategunda eftir ársfjórðungum m.v. 1 ársfj. 1987 = 100

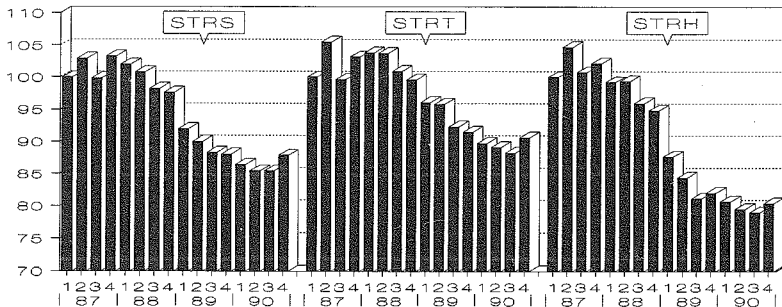
| Félag | Ársfj. og ár | Km.taxtal. | Km.yfirv.l. | Km.heildarl. |
|-------|--------------|------------|-------------|--------------|
|       | 2 1990       | 85.45      | 81.90       | 84.51        |
|       | 3 1990       | 84.85      | 29.61       | 70.82        |
|       | 4 1990       | 84.61      | 90.71       | 92.10        |



## Kaupmáttur launategunda eftir ársfjórðungum m.v. 1 ársfj. 1987 = 100

| Félag                  | Ársfj. og ár | Km.taxtal. | Km.yfirv.l. | Km.heildart. |
|------------------------|--------------|------------|-------------|--------------|
| ST.RV. Skrifstofuhópur |              |            |             |              |
|                        | 1 1987       | 100.00     | 100.00      | 100.00       |
|                        | 2 1987       | 102.92     | 94.88       | 100.96       |
|                        | 3 1987       | 99.85      | 83.61       | 95.80        |
|                        | 4 1987       | 103.28     | 108.97      | 104.42       |
|                        | 1 1988       | 102.00     | 108.50      | 103.28       |
|                        | 2 1988       | 100.79     | 106.32      | 101.82       |
|                        | 3 1988       | 98.23      | 89.22       | 95.75        |
|                        | 4 1988       | 97.60      | 112.66      | 100.76       |
|                        | 1 1989       | 91.95      | 92.07       | 93.83        |
|                        | 2 1989       | 89.99      | 87.90       | 93.62        |
|                        | 3 1989       | 88.32      | 71.70       | 85.90        |
|                        | 4 1989       | 88.03      | 90.91       | 97.82        |
|                        | 1 1990       | 86.44      | 84.35       | 87.70        |
|                        | 2 1990       | 85.45      | 81.17       | 85.63        |
|                        | 3 1990       | 85.45      | 71.81       | 83.37        |
|                        | 4 1990       | 87.88      | 87.92       | 96.14        |

## KAUPMÁTTUR TAXTALAUNA



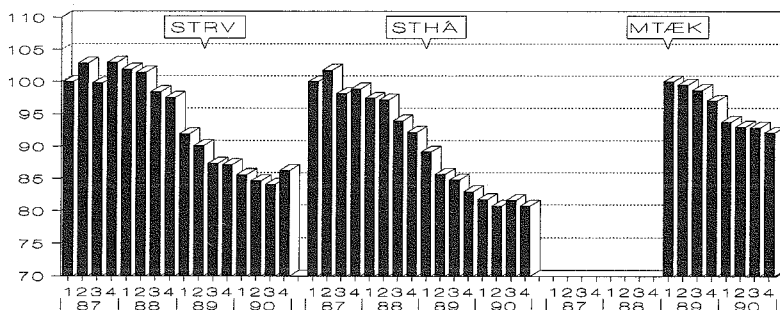
|                   |        |        |        |        |
|-------------------|--------|--------|--------|--------|
| ST.RV. Tæknihópur |        |        |        |        |
|                   | 1 1987 | 100.00 | 100.00 | 100.00 |
|                   | 2 1987 | 101.50 | 100.53 | 100.30 |
|                   | 3 1987 | 99.65  | 84.26  | 93.62  |
|                   | 4 1987 | 103.17 | 103.39 | 103.20 |
|                   | 1 1988 | 103.84 | 94.25  | 100.42 |
|                   | 2 1988 | 103.74 | 109.11 | 104.17 |
|                   | 3 1988 | 100.90 | 83.11  | 93.49  |
|                   | 4 1988 | 99.57  | 100.14 | 99.54  |
|                   | 1 1989 | 96.04  | 112.23 | 102.76 |
|                   | 2 1989 | 95.80  | 92.31  | 96.60  |
|                   | 3 1989 | 92.28  | 70.99  | 85.34  |
|                   | 4 1989 | 91.49  | 84.52  | 97.31  |
|                   | 1 1990 | 89.75  | 93.27  | 91.72  |
|                   | 2 1990 | 89.10  | 90.01  | 89.26  |
|                   | 3 1990 | 88.23  | 70.05  | 81.98  |
|                   | 4 1990 | 90.59  | 94.33  | 99.03  |

|                         |        |        |        |        |
|-------------------------|--------|--------|--------|--------|
| ST.RV. Heilbrigðishópur |        |        |        |        |
|                         | 1 1987 | 100.00 | 100.00 | 100.00 |
|                         | 2 1987 | 104.71 | 125.71 | 108.54 |
|                         | 3 1987 | 100.74 | 105.82 | 100.48 |
|                         | 4 1987 | 102.12 | 105.13 | 101.57 |
|                         | 1 1988 | 99.20  | 102.47 | 99.57  |
|                         | 2 1988 | 99.35  | 113.07 | 101.46 |
|                         | 3 1988 | 95.94  | 78.57  | 90.95  |
|                         | 4 1988 | 94.81  | 91.88  | 94.13  |
|                         | 1 1989 | 87.67  | 93.02  | 90.10  |
|                         | 2 1989 | 84.38  | 83.90  | 88.17  |
|                         | 3 1989 | 81.19  | 65.47  | 78.84  |
|                         | 4 1989 | 82.07  | 83.19  | 90.40  |
|                         | 1 1990 | 80.72  | 75.53  | 81.81  |
|                         | 2 1990 | 79.56  | 96.19  | 84.55  |
|                         | 3 1990 | 79.00  | 69.37  | 77.89  |
|                         | 4 1990 | 80.43  | 88.95  | 90.21  |

## Kaupmáttur launategunda eftir ársfjórðungum m.v. 1 ársfj. 1987 = 100

| Félag                              | Ársfj. og ár | Km.taxtal. | Km.yfir.l. | Km.heildarl. |
|------------------------------------|--------------|------------|------------|--------------|
| Starfsmannafélag Reykjavíkurborgar |              |            |            |              |
| 1                                  | 1987         | 100.00     | 100.00     | 100.00       |
| 2                                  | 1987         | 102.87     | 105.78     | 103.02       |
| 3                                  | 1987         | 99.80      | 89.75      | 96.19        |
| 4                                  | 1987         | 103.02     | 105.00     | 103.08       |
| 1                                  | 1988         | 101.93     | 99.77      | 101.04       |
| 2                                  | 1988         | 101.47     | 109.22     | 102.67       |
| 3                                  | 1988         | 98.42      | 83.55      | 93.31        |
| 4                                  | 1988         | 97.56      | 100.57     | 98.14        |
| 1                                  | 1989         | 91.96      | 102.20     | 96.18        |
| 2                                  | 1989         | 90.15      | 90.32      | 93.23        |
| 3                                  | 1989         | 87.35      | 71.34      | 83.66        |
| 4                                  | 1989         | 87.19      | 87.06      | 95.42        |
| 1                                  | 1990         | 85.62      | 88.12      | 87.67        |
| 2                                  | 1990         | 84.66      | 90.12      | 86.70        |
| 3                                  | 1990         | 84.14      | 71.72      | 81.18        |
| 4                                  | 1990         | 86.27      | 93.13      | 95.74        |

## KAUPMATTUR TAXTALAUNA



## ST.RV. Háskólahópur

|   |      |        |        |        |
|---|------|--------|--------|--------|
| 1 | 1987 | 100.00 | 100.00 | 100.00 |
| 2 | 1987 | 101.81 | 96.61  | 100.41 |
| 3 | 1987 | 98.18  | 88.33  | 95.49  |
| 4 | 1987 | 98.89  | 107.73 | 101.96 |
| 1 | 1988 | 97.44  | 98.51  | 98.20  |
| 2 | 1988 | 97.20  | 102.05 | 99.30  |
| 3 | 1988 | 93.99  | 89.84  | 92.99  |
| 4 | 1988 | 92.22  | 100.09 | 95.20  |
| 1 | 1989 | 89.15  | 102.91 | 96.96  |
| 2 | 1989 | 85.66  | 101.24 | 95.57  |
| 3 | 1989 | 84.79  | 86.65  | 88.47  |
| 4 | 1989 | 82.98  | 96.28  | 95.19  |
| 1 | 1990 | 81.76  | 96.67  | 89.83  |
| 2 | 1990 | 80.78  | 98.05  | 89.56  |
| 3 | 1990 | 81.64  | 85.48  | 85.74  |
| 4 | 1990 | 80.75  | 96.98  | 93.48  |

## Meinatæknafélag Íslands (R.borg)

|   |      |        |        |        |
|---|------|--------|--------|--------|
| 1 | 1989 | 100.00 | 100.00 | 100.00 |
| 2 | 1989 | 99.50  | 101.08 | 101.58 |
| 3 | 1989 | 98.70  | 95.69  | 97.36  |
| 4 | 1989 | 97.04  | 94.70  | 101.20 |
| 1 | 1990 | 93.76  | 89.97  | 91.98  |
| 2 | 1990 | 93.01  | 98.60  | 94.40  |
| 3 | 1990 | 92.88  | 76.30  | 86.53  |
| 4 | 1990 | 92.12  | 89.43  | 96.25  |

## Fóstrufélag Íslands (R.borg)

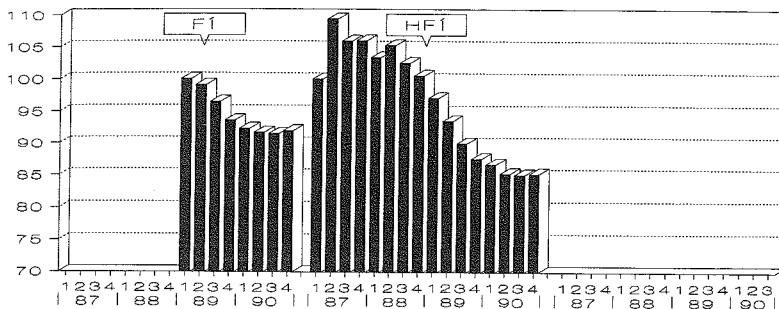
|   |      |        |        |        |
|---|------|--------|--------|--------|
| 1 | 1989 | 100.00 | 100.00 | 100.00 |
| 2 | 1989 | 99.06  | 106.66 | 102.83 |
| 3 | 1989 | 96.52  | 84.45  | 94.50  |
| 4 | 1989 | 93.63  | 107.35 | 103.02 |
| 1 | 1990 | 92.31  | 93.12  | 92.52  |
| 2 | 1990 | 91.75  | 100.34 | 93.14  |

## Kaupmáttur launategunda eftir árstjórnungum m.v. 1 ársfj. 1987 = 100

| Félag | Ársfj. og ár | Km.taxtal. | Km.yfirv.l. | Km.heildarl. |
|-------|--------------|------------|-------------|--------------|
|-------|--------------|------------|-------------|--------------|

|  |        |       |        |        |
|--|--------|-------|--------|--------|
|  | 3 1990 | 91.53 | 93.28  | 91.70  |
|  | 4 1990 | 92.01 | 120.24 | 103.65 |

## KAUPMÁTTUR TAXTALAUNA



## Hjúkrunarfélag Íslands

|   |      |        |        |        |
|---|------|--------|--------|--------|
| 1 | 1987 | 100.00 | 100.00 | 100.00 |
| 2 | 1987 | 109.38 | 139.28 | 117.16 |
| 3 | 1987 | 105.96 | 128.48 | 110.40 |
| 4 | 1987 | 106.03 | 98.71  | 102.95 |
| 1 | 1988 | 103.40 | 115.93 | 107.38 |
| 2 | 1988 | 105.28 | 131.30 | 111.98 |
| 3 | 1988 | 102.54 | 106.44 | 101.88 |
| 4 | 1988 | 100.55 | 98.76  | 99.85  |
| 1 | 1989 | 97.10  | 92.56  | 96.21  |
| 2 | 1989 | 93.56  | 88.68  | 91.99  |
| 3 | 1989 | 90.04  | 87.77  | 88.17  |
| 4 | 1989 | 87.57  | 75.79  | 89.29  |
| 1 | 1990 | 86.71  | 72.95  | 82.56  |
| 2 | 1990 | 85.28  | 90.85  | 86.42  |
| 3 | 1990 | 85.09  | 74.46  | 81.21  |
| 4 | 1990 | 85.25  | 81.83  | 89.42  |

## Kaupmáttur launategunda eftir ársfjórðungum m.v. 1 ársfj. 1987 =100

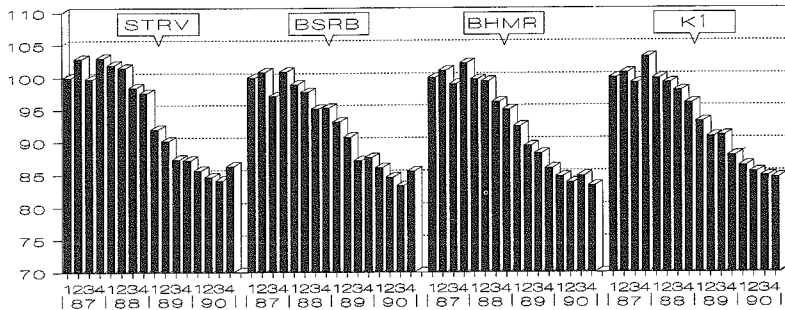
| Félag | Árstj. og ár | Km.taxtal. | Km.yfirv.l. | Km.heildarl. |
|-------|--------------|------------|-------------|--------------|
|-------|--------------|------------|-------------|--------------|

## Bandalögin, kaupmáttur eftir ársfjórðungum:

## Starfsmannafélag Reykjavíkurborgar

|   |      |        |        |        |
|---|------|--------|--------|--------|
| 1 | 1987 | 100.00 | 100.00 | 100.00 |
| 2 | 1987 | 102.87 | 105.78 | 103.02 |
| 3 | 1987 | 99.80  | 89.75  | 96.19  |
| 4 | 1987 | 103.02 | 105.00 | 103.08 |
| 1 | 1988 | 101.93 | 99.77  | 101.04 |
| 2 | 1988 | 101.47 | 109.22 | 102.67 |
| 3 | 1988 | 98.42  | 83.55  | 93.31  |
| 4 | 1988 | 97.56  | 100.57 | 98.14  |
| 1 | 1989 | 91.96  | 102.20 | 96.18  |
| 2 | 1989 | 90.15  | 90.32  | 93.23  |
| 3 | 1989 | 87.35  | 71.24  | 83.66  |
| 4 | 1989 | 87.19  | 87.06  | 95.42  |
| 1 | 1990 | 85.62  | 88.12  | 87.67  |
| 2 | 1990 | 84.66  | 90.12  | 86.70  |
| 3 | 1990 | 84.14  | 71.72  | 81.18  |
| 4 | 1990 | 86.27  | 93.13  | 95.74  |

## KAUPMÁTTUR TAXTALAUNA



## BSRB félögin hjá ríkinu, alls

|   |      |        |        |        |
|---|------|--------|--------|--------|
| 1 | 1987 | 100.00 | 100.00 | 100.00 |
| 2 | 1987 | 100.88 | 109.30 | 103.09 |
| 3 | 1987 | 97.09  | 87.38  | 92.90  |
| 4 | 1987 | 100.93 | 100.72 | 100.28 |
| 1 | 1988 | 98.95  | 100.03 | 99.35  |
| 2 | 1988 | 97.78  | 95.53  | 96.43  |
| 3 | 1988 | 95.18  | 82.89  | 90.57  |
| 4 | 1988 | 95.30  | 89.91  | 93.81  |
| 1 | 1989 | 93.16  | 88.68  | 92.02  |
| 2 | 1989 | 90.77  | 85.74  | 88.98  |
| 3 | 1989 | 87.16  | 72.57  | 82.04  |
| 4 | 1989 | 87.66  | 77.37  | 84.57  |
| 1 | 1990 | 86.12  | 74.90  | 82.47  |
| 2 | 1990 | 84.62  | 77.91  | 82.07  |
| 3 | 1990 | 83.35  | 68.60  | 78.14  |
| 4 | 1990 | 85.59  | 79.27  | 89.36  |

## BHMR félögin, alls

|   |      |        |        |        |
|---|------|--------|--------|--------|
| 1 | 1987 | 100.00 | 100.00 | 100.00 |
| 2 | 1987 | 101.03 | 101.58 | 101.23 |
| 3 | 1987 | 99.01  | 56.50  | 86.89  |
| 4 | 1987 | 102.21 | 105.58 | 102.64 |
| 1 | 1988 | 99.73  | 88.70  | 96.65  |
| 2 | 1988 | 99.42  | 87.08  | 95.55  |
| 3 | 1988 | 96.20  | 61.41  | 86.19  |
| 4 | 1988 | 95.02  | 107.53 | 98.28  |
| 1 | 1989 | 92.43  | 90.15  | 91.75  |
| 2 | 1989 | 89.41  | 73.54  | 85.02  |
| 3 | 1989 | 88.25  | 67.33  | 82.27  |
| 4 | 1989 | 86.00  | 89.18  | 86.96  |
| 1 | 1990 | 84.75  | 80.28  | 83.21  |
| 2 | 1990 | 83.86  | 86.39  | 84.29  |

## Kaupmáttur launategunda eftir ársfjórðungum m.v. 1 ársfj. 1987 =100

| Félag                        | Ársfj. og ár | Km.taxtal. | Km.yfirv.l. | Km.heildarl. |
|------------------------------|--------------|------------|-------------|--------------|
|                              | 3 1990       | 84.86      | 58.50       | 77.64        |
|                              | 4 1990       | 83.38      | 97.65       | 91.94        |
| Kennarasamband Íslands, alls |              |            |             |              |
|                              | 1 1987       | 100.00     | 100.00      | 100.00       |
|                              | 2 1987       | 100.73     | 66.27       | 91.99        |
|                              | 3 1987       | 99.19      | 24.26       | 80.17        |
|                              | 4 1987       | 103.12     | 107.28      | 104.24       |
|                              | 1 1988       | 99.88      | 104.95      | 101.26       |
|                              | 2 1988       | 99.18      | 66.57       | 90.92        |
|                              | 3 1988       | 97.98      | 29.36       | 80.57        |
|                              | 4 1988       | 96.03      | 104.13      | 98.12        |
|                              | 1 1989       | 93.12      | 103.76      | 95.85        |
|                              | 2 1989       | 90.84      | 66.42       | 84.65        |
|                              | 3 1989       | 90.98      | 30.27       | 75.58        |
|                              | 4 1989       | 87.95      | 90.96       | 88.75        |
|                              | 1 1990       | 86.41      | 85.73       | 86.22        |
|                              | 2 1990       | 85.45      | 81.90       | 84.51        |
|                              | 3 1990       | 84.85      | 29.61       | 70.82        |
|                              | 4 1990       | 84.61      | 90.71       | 92.10        |

## Kaupmáttur launategunda eftir ársfjórðungum m.v. 1 ársfj. 1987 = 100

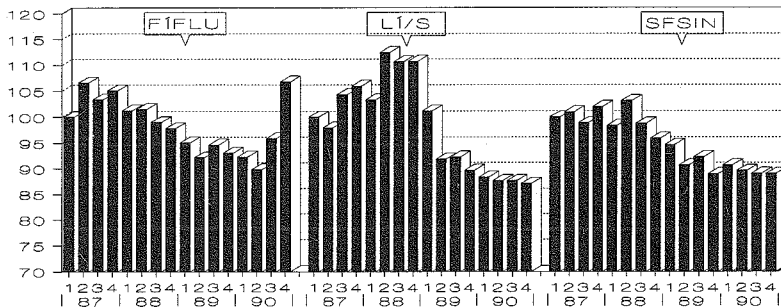
| Félag | Árstj. og ár | Km.taxtal. | Km.yfirv.l. | Km.heildarl. |
|-------|--------------|------------|-------------|--------------|
|-------|--------------|------------|-------------|--------------|

## Ýmis félag ríkisstarfsmanna, kaupmáttur eftir ársfjórðungum:

## Félag Íslenskra flugumferðarstjóra

|   |      |        |        |        |
|---|------|--------|--------|--------|
| 1 | 1987 | 100.00 | 100.00 | 100.00 |
| 2 | 1987 | 106.58 | 125.02 | 112.76 |
| 3 | 1987 | 103.39 | 119.89 | 109.12 |
| 4 | 1987 | 105.07 | 99.27  | 100.65 |
| 1 | 1988 | 101.26 | 109.01 | 103.69 |
| 2 | 1988 | 101.51 | 104.66 | 102.11 |
| 3 | 1988 | 99.00  | 97.78  | 98.55  |
| 4 | 1988 | 97.83  | 93.91  | 95.36  |
| 1 | 1989 | 95.09  | 101.22 | 97.35  |
| 2 | 1989 | 92.17  | 85.77  | 89.93  |
| 3 | 1989 | 94.64  | 110.31 | 101.61 |
| 4 | 1989 | 93.09  | 78.94  | 86.37  |
| 1 | 1990 | 92.28  | 83.02  | 87.96  |
| 2 | 1990 | 89.86  | 89.61  | 89.95  |
| 3 | 1990 | 95.92  | 99.38  | 97.51  |
| 4 | 1990 | 106.82 | 75.45  | 96.08  |

## KAUPMÁTTUR TAXTALAUNA



## Læknafélag Íslands sjúkrahússlæknar

|   |      |        |        |        |
|---|------|--------|--------|--------|
| 1 | 1987 | 100.00 | 100.00 | 100.00 |
| 2 | 1987 | 97.91  | 95.68  | 98.37  |
| 3 | 1987 | 104.35 | 82.05  | 96.33  |
| 4 | 1987 | 105.96 | 83.27  | 97.76  |
| 1 | 1988 | 103.32 | 101.67 | 102.34 |
| 2 | 1988 | 112.41 | 91.04  | 99.03  |
| 3 | 1988 | 110.68 | 81.04  | 94.50  |
| 4 | 1988 | 110.78 | 101.87 | 101.49 |
| 1 | 1989 | 101.13 | 95.67  | 96.83  |
| 2 | 1989 | 91.86  | 87.55  | 91.55  |
| 3 | 1989 | 92.28  | 87.03  | 91.18  |
| 4 | 1989 | 89.71  | 94.34  | 92.65  |
| 1 | 1990 | 88.32  | 77.85  | 84.38  |
| 2 | 1990 | 87.68  | 76.98  | 83.96  |
| 3 | 1990 | 87.69  | 88.14  | 88.39  |
| 4 | 1990 | 87.08  | 91.47  | 91.86  |

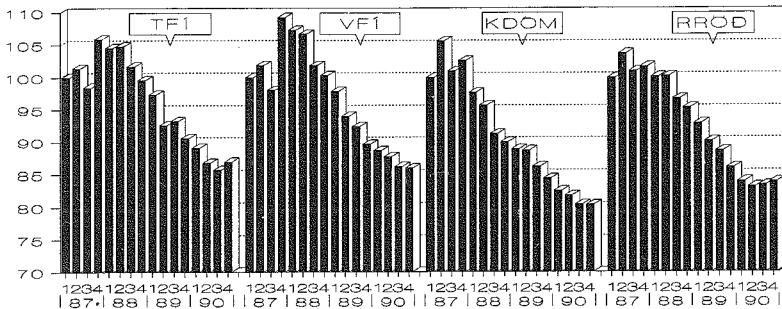
## Starfsmannafélag símfónihljómsveitar Íslands

|   |      |        |        |        |
|---|------|--------|--------|--------|
| 1 | 1987 | 100.00 | 100.00 | 100.00 |
| 2 | 1987 | 101.00 | 281.57 | 114.27 |
| 3 | 1987 | 98.90  | 39.63  | 93.21  |
| 4 | 1987 | 101.98 | 188.07 | 108.68 |
| 1 | 1988 | 98.39  | 17.18  | 91.30  |
| 2 | 1988 | 103.12 | 415.51 | 126.31 |
| 3 | 1988 | 98.79  | 134.91 | 100.15 |
| 4 | 1988 | 95.93  | 125.49 | 99.08  |
| 1 | 1989 | 94.64  | 68.29  | 93.51  |
| 2 | 1989 | 90.70  | 162.24 | 95.86  |
| 3 | 1989 | 92.29  | 193.59 | 99.94  |
| 4 | 1989 | 88.99  | 91.38  | 89.74  |
| 1 | 1990 | 90.72  | 62.42  | 88.81  |
| 2 | 1990 | 89.65  | 58.32  | 87.82  |

## Kaupmáttur launategunda eftir ársfjórðungum m.v. 1 ársfj. 1987 = 100

| Félag                      | Ársfj. og ár | Km.taxtal. | Km.yfirv.l. | Km.heildarl. |
|----------------------------|--------------|------------|-------------|--------------|
|                            | 3 1990       | 89.08      | 43.02       | 84.68        |
|                            | 4 1990       | 89.05      | 83.26       | 95.40        |
| Tæknifræðingafélag Íslands |              |            |             |              |
|                            | 1 1987       | 100.00     | 100.00      | 100.00       |
|                            | 2 1987       | 101.39     | 109.04      | 104.97       |
|                            | 3 1987       | 98.46      | 93.49       | 95.99        |
|                            | 4 1987       | 105.86     | 117.37      | 110.90       |
|                            | 1 1988       | 104.54     | 100.05      | 102.81       |
|                            | 2 1988       | 104.81     | 89.45       | 98.19        |
|                            | 3 1988       | 101.67     | 98.39       | 99.95        |
|                            | 4 1988       | 99.54      | 84.22       | 93.09        |
|                            | 1 1989       | 97.35      | 93.67       | 95.75        |
|                            | 2 1989       | 92.60      | 91.52       | 92.45        |
|                            | 3 1989       | 93.19      | 94.40       | 93.71        |
|                            | 4 1989       | 90.57      | 91.87       | 91.37        |
|                            | 1 1990       | 89.05      | 75.68       | 82.77        |
|                            | 2 1990       | 86.75      | 83.68       | 85.10        |
|                            | 3 1990       | 85.67      | 86.41       | 86.11        |
|                            | 4 1990       | 86.91      | 91.24       | 92.18        |

## KAUPMATTUR TAXTALAUNA



## Stéttarfélag verkfræðinga

|   |      |        |        |        |
|---|------|--------|--------|--------|
| 1 | 1987 | 100.00 | 100.00 | 100.00 |
| 2 | 1987 | 101.84 | 106.07 | 103.46 |
| 3 | 1987 | 98.02  | 99.27  | 98.27  |
| 4 | 1987 | 109.25 | 120.22 | 113.47 |
| 1 | 1988 | 107.25 | 106.80 | 107.11 |
| 2 | 1988 | 106.67 | 98.92  | 103.76 |
| 3 | 1988 | 101.84 | 98.84  | 100.58 |
| 4 | 1988 | 100.32 | 96.05  | 98.87  |
| 1 | 1989 | 97.84  | 99.91  | 98.92  |
| 2 | 1989 | 93.96  | 98.05  | 95.61  |
| 3 | 1989 | 92.38  | 97.52  | 94.28  |
| 4 | 1989 | 89.64  | 98.82  | 93.05  |
| 1 | 1990 | 88.61  | 87.52  | 88.16  |
| 2 | 1990 | 87.69  | 90.81  | 88.86  |
| 3 | 1990 | 86.16  | 90.02  | 87.60  |
| 4 | 1990 | 85.92  | 99.79  | 94.84  |

## Utan félaga kjaradömsröðun

|   |      |        |        |        |
|---|------|--------|--------|--------|
| 1 | 1987 | 100.00 | 100.00 | 100.00 |
| 2 | 1987 | 105.60 | 130.65 | 107.58 |
| 3 | 1987 | 100.98 | 68.44  | 98.43  |
| 4 | 1987 | 102.57 | 109.44 | 102.78 |
| 1 | 1988 | 97.69  | 69.22  | 95.88  |
| 2 | 1988 | 95.68  | 106.04 | 96.75  |
| 3 | 1988 | 91.22  | 74.32  | 90.06  |
| 4 | 1988 | 89.94  | 90.67  | 90.18  |
| 1 | 1989 | 88.85  | 98.24  | 89.70  |
| 2 | 1989 | 88.66  | 106.88 | 90.36  |
| 3 | 1989 | 86.23  | 69.60  | 85.13  |
| 4 | 1989 | 84.41  | 93.21  | 85.00  |
| 1 | 1990 | 82.50  | 84.33  | 82.86  |

## Kaupmáttur launategunda eftir ársfjórðungum m.v. 1 ársfj. 1987 =100

| Félag                     | Árstj. og ár | Km.taxtal. | Km.yfirv.l. | Km.heildarl. |
|---------------------------|--------------|------------|-------------|--------------|
|                           | 2 1990       | 81.76      | 99.88       | 83.49        |
|                           | 3 1990       | 80.42      | 102.41      | 82.40        |
|                           | 4 1990       | 80.39      | 107.04      | 84.81        |
| Utan félaga ráðherraröðun |              |            |             |              |
|                           | 1 1987       | 100.00     | 100.00      | 100.00       |
|                           | 2 1987       | 103.69     | 123.37      | 109.16       |
|                           | 3 1987       | 101.00     | 97.17       | 100.06       |
|                           | 4 1987       | 101.68     | 121.97      | 107.22       |
|                           | 1 1988       | 100.12     | 115.08      | 104.39       |
|                           | 2 1988       | 100.22     | 128.36      | 108.13       |
|                           | 3 1988       | 96.74      | 105.58      | 99.34        |
|                           | 4 1988       | 95.31      | 100.58      | 97.01        |
|                           | 1 1989       | 92.88      | 109.64      | 97.70        |
|                           | 2 1989       | 90.10      | 129.19      | 100.99       |
|                           | 3 1989       | 88.61      | 103.18      | 92.75        |
|                           | 4 1989       | 86.09      | 98.95       | 89.87        |
|                           | 1 1990       | 83.95      | 99.18       | 88.39        |
|                           | 2 1990       | 83.14      | 104.05      | 89.15        |
|                           | 3 1990       | 83.37      | 97.61       | 87.47        |
|                           | 4 1990       | 83.93      | 102.51      | 92.94        |



| Framfærsluvísitala frá 1981 samkvæmt Hagstofu Íslands |         |         |         |         |         |         |         |         |         |         |         |         |
|---|---------|---------|---------|---------|---------|---------|---------|---------|---------|---------|---------|---------|
| ÁRMÁN   | 1       | 2       | 3       | 4       | 5       | 6       | 7       | 8       | 9       | 10      | 11      | 12      |
| 1981  | 100.00  | 101.62  | 104.67  | 109.41  | 109.77  | 115.70  | 118.30  | 119.61  | 124.26  | 127.53  | 131.48  | 138.68  |
| 1982  | 141.10  | 144.26  | 152.00  | 158.80  | 159.94  | 168.78  | 173.55  | 178.79  | 194.01  | 202.08  | 210.10  | 221.70  |
| 1983  | 230.91  | 241.93  | 267.21  | 285.36  | 298.50  | 327.16  | 339.98  | 362.52  | 365.21  | 376.52  | 386.85  | 391.62  |
| 1984  | 394.44  | 396.99  | 401.32  | 407.03  | 410.61  | 420.17  | 424.06  | 430.73  | 433.39  | 438.20  | 443.80  | 465.31  |
| 1985  | 485.44  | 502.11  | 515.73  | 524.38  | 535.42  | 545.31  | 558.46  | 575.28  | 590.24  | 603.27  | 616.60  | 632.52  |
| 1986  | 651.14  | 665.99  | 655.79  | 659.80  | 671.07  | 675.52  | 678.42  | 686.08  | 694.22  | 697.19  | 711.49  | 717.96  |
| 1987  | 734.63  | 745.43  | 756.46  | 766.98  | 776.35  | 791.92  | 805.77  | 825.82  | 835.19  | 848.96  | 876.12  | 893.43  |
| 1988  | 926.61  | 934.40  | 943.01  | 956.55  | 973.38  | 1006.90 | 1041.80 | 1063.40 | 1071.20 | 1074.80 | 1075.50 | 1077.50 |
| 1989  | 1095.50 | 1112.00 | 1142.50 | 1167.30 | 1190.30 | 1225.40 | 1233.90 | 1250.50 | 1275.90 | 1301.10 | 1320.70 | 1349.30 |
| 1990  | 1355.70 | 1377.80 | 1389.20 | 1393.40 | 1406.00 | 1415.70 | 1425.00 | 1429.40 | 1429.20 | 1433.10 | 1442.90 | 1446.40 |
| 1991  | 1455.50 | 1459.80 |         |         |         |         |         |         |         |         |         |         |

## EFNISYFIRLIT:

|  |         |
|--|---------|
| Innsíða .....  | 1       |
| Skýringar .....  | 2       |
| KOS nefndarskipan o.fl .....   | 3       |
| Frá framkvæmdastjórn KOS .....   | 4       |
| Lög og reglugerð .....   | 4 - 5   |
| Listi yfir stéttarfélög .....  | 6       |
| Mánaðartölur um stöðugildi, laun og kaupmátt taxtalauna fyrir árið 1990: |         |
| BSRB ríkisstarfsmenn .....   | 7 - 10  |
| BHMR hópar .....   | 11 - 12 |
| KÍ .....   | 13      |
| Reykjavíkurborg .....  | 14 - 15 |
| Bandalögin .....   | 16      |
| Ýmis félög ríkisstarfsmanna .....  | 17 - 18 |
| Ársfjórðungstölur um kaupmátt launa ásamt súluritum:                     |         |
| BSRB ríkisstarfsmenn .....   | 19 - 25 |
| BHMR hópar .....   | 26 - 29 |
| KÍ .....   | 30 - 31 |
| Reykjavíkurborg .....  | 32 - 34 |
| Bandalögin .....   | 35 - 36 |
| Ýmis félög ríkisstarfsmanna .....  | 37 - 39 |
| Framfærsluvísitala frá 1981 .....  | 40      |
| Efnisyfirlit .....   | 40      |