

ISSN 1027-4081

Fréttarit KOS

Nr. 30

Tölur ársins 2003

KJARARANNSÓKNARNEFND OPINBERRA STARFSMANNA (KOS)
skipa nú eftirtaldir aðilar:

Fulltrúar atvinnurekenda:

Birgir Björn Sigurjónsson
Gunnar Björnsson
Hrönn Pálsdóttir
Karl Björnsson
- óskipað

Fulltrúar launafólks:

Árni Sigurjónsson
Eiríkur Jónsson
Gunnar Gunnarsson
Halldóra Friðjónsdóttir
Jens Andrésson

Framkvæmdastjórn **KOS** skipa:

Birgir Björn Sigurjónsson, Gunnar Gunnarsson, Halldóra Friðjónsdóttir
og Hrönn Pálsdóttir

Skrifstofa **KOS**

Framkvæmdastjóri : Geir Thorsteinsson
Fulltrúi : óráðið

Heimilisfang :

KJARARANNSÓKNARNEFND OPINBERRA STARFSMANNA
BORGARTÚNI 21, 4. hæð.
105 REYKJAVÍK

Síminn hjá KOS er: 562 - 6030

Netfang: kos@simnet.is
Heimasíða á Netinu: <http://www.simnet.is/kos>

EFTIRPRENTUN ER HEIMIL ÚR RITINU, ENDA SÉ UPPRUNA GETIÐ

ISSN 1027-4081

KJARARANNSÓKNARNEFND OPINBERRA STARFSMANNA starfar samkvæmt
34. grein laga nr. 94/1986 um kjarasamninga opinberra starfsmanna, sem hljóðar þannig:

Á vegum þeirra aðila, sem lög þessi taka til, starfi nefnd er annist kjararannsóknir
og aðra upplýsingaöflun vegna kjarasamninga.

Nefndin skal skipuð jafnmörgum fulltrúum stéttarfélaganna og vinnuveitenda
samkvæmt nánari ákvæðum í reglugerð sem sett skal að fengnum tillögum heildarsamtaka
opinberra starfsmanna og Sambands íslenskra sveitarfélaga.

Nefndin setur sér starfsreglur, m.a. um starfssvið og starfshætti.

Kostnaður við störf nefndarinnar greiðist úr ríkissjóði.

FRÉTTARIT KOS

Nr. 30

Júní 2004

Tölur ársins 2003

Útgefandi: Kjararannsóknarnefnd
opinberra starfsmanna

Skrifstofa KOS: Borgartúni 21, 4. hæð
105 REYKJAVÍK
Sími: 562-6030

Netfang: kos@simnet.is

Heimasíða KOS: <http://www.simnet.is/kos>

Efnisyfirlit

1. Fréttarit KOS Nr. 30

- 1.1 Skýringar5
- 1.2 Frá framkvæmdastjórn KOS 7
- 1.3 Listi yfir stéttarfélög og hópa sem eru í heftinu 8

2. Starfsmenn ríkis og Reykjavíkurborgar

- 2.1 Yfirlit um skiptingu og fjölda opinberra starfsmanna 9
- 2.2 Meðallaun opinberra starfsmanna ríkis og Reykjavíkurborgar 10
- 2.3 Dreifing dagvinnulauna stéttarfélaga og hópa eftir kyni í nóv. 2003. 12

3. Meðaltal dagvinnulauna, yfirvinnulauna og annarra launa

- 3.1 BSRB, ríkisstarfsmenn 17
- 3.2 BHM, ríkisstarfsmenn 23
- 3.3 Kennarasamband Íslands, ríkisstarfsmenn 36
- 3.4 Ýmsir, ríkisstarfsmenn 37
- 3.5 Starfsmenn Reykjavíkurborgar 45

4. Ýmislegt

- 4.1 Vísitala neysluverðs (framfærsluvísitala) með grunn 1981: 49

1. Fréttarit KOS

1.1 Skýringar

Í þessari útgáfu eru starfsmenn ríkisins, sem fá greidd laun sem unnin eru í launavinnslukerfi ríkisins og starfsmenn Reykjavíkurborgar sem fá laun úr launavinnslukerfi Reykjavíkurborgar. Jafnframt eru í heftinu launaupplýsingar frá nokkrum öðrum sveitarfélögum en

Reykjavíkurborg. Áfram verður væntanlega unnið að því að taka inn hópa frá fleiri bæjar- og sveitarfélögum og fyrst um sinn er miðað við að fá tölur frá öllum kaupstöðum svo og öðrum sveitarfélögum, sem hafa fleiri en 1000 íbúa.

Skýringar:

GR. STG.	=	Greidd stöðugildi í dagvinnu (Stg.)
STÖÐUGILDI	=	Samanlagt starfshlutfall starfsmanna í hverjum hóp. (STG).
DAGVINNUL.	=	Laun og aðrar greiðslur sem greiddar eru fyrir dagvinnutíma, (Dl.)
YFIRVL.	=	Greidd laun fyrir yfirvinnu. (Yl.)
ÖNNUR L.	=	Öll önnur greidd laun á launaseðlum. (Öl.)
HEILDARL.	=	Summan af dagvinnulaunum, yfirvinnulaunum og öðrum launum (Hl.)
MEÐAL MÁN- AÐARLAUN	=	Summa dagvinnulauna deilt með summu stöðugilda fyrir hvert félag eða hóp

Breyting var gerð á vinnslu dagvinnulauna frá og með 1990. Öll laun sem tilheyra dagvinnu reiknast nú sem dagvinnulaun og um leið reiknast þau yfir í hlutfall stöðugilda og koma þar einnig til viðbótar.

Á undanförunum árum hafa orðið breytingar á aðild stéttarfélaganna að bandalögum og hópar starfsmanna, sem áður voru í tilteknu stéttarfélagi, hafa stofnað ný en dæmi eru einnig um stéttarfélög sem hafa sameinast. Þá hafa orðið umfangsmiklar breytingar á tímabilinu á

hópunum „Kjaradómur“ og „Utan félaganna“ einkum vegna setningar laga nr. 120/1992 um Kjaradóm og kjaranefnd, sem leiddi m.a. til þess að stofnað var til hópsins „Kjaranefnd“ frá mars 1993. Í kjölfar setningar laga nr. 70/1996 og afleiddra lagabreytinga á sérlögum hafa enn orðið tilfærslur í hópunum „Kjaradómur“ og „Kjaranefnd“. Þessar breytingar hafa falið í sér að einstaklingar sem voru yfirleitt áður í stéttarfélögum (háskólumanna) hafa verið settir undir Kjaradóm og Kjaranefnd. Þá var með lögum ákveðið að frá 1. ágúst 1996

skyldu kennarar og skólastjórnendur við grunnskóla vera starfsmenn sveitarfélaga. Ekki eru gerðar sérstakar ráðstafanir til að reikna hópa, félög eða bandalög afturvirkir út frá breyttum forsendum. Í flestum tilvikum byrja slíkir hópar eða félög frá þeim tíma sem til þeirra er stofnað. Stjórnumerkt er við slík félög

og getið upphafstímabilis sem kaupmáttarútreikningur miðast við.

Athuga ber að meðaltölur launa sumarmánaða eru að jafnaði lægri en aðra mánuði vegna afleysinga og ráðninga sumarfólks.

Ástæða er til að vekja sérstaka athygli á breyttum hlutföllum launategunda hjá mörgum stéttarfélögum, sem m.a. má rekja til nýja launakerfisins, sem tók gildi í kjölfar kjarasamninga á árabílinu 1997 - 2002. Dagvinnulaunahluti þeirra eykst en yfirvinnuhluti minnkar.

Jafnframt geta verið sveiflur í launum á milli mánaða hjá einstökum stéttarfélögum og/eða hópum vegna afturvirkra leiðréttinga á launum.

1.2 Frá framkvæmdastjórn KOS

Í þessu hefti KOS eru upplýsingar á grunni frá og með árinu 1990. Eins og áður er unnið úr öllum greiddum launum frá viðkomandi launaskrifstofum.

Kosturinn við þessar upplýsingar, umfram þær sem fást við kaup og kjör annarra en þeirra er vinna hjá ríki og borg, er að hér er **ekki um úrtak** að ræða. Upplýsingarnar ná til launa, sem skráð eru í launavinnslukerfi ríkisins og launavinnslukerfi Reykjavíkurborgar. Þar með er ekki sagt að efnið sé gallalaust.

Tölurnar sýna laun allra þeirra, sem í starfi eru á hverjum tíma. Þetta getur valdið erfiðleikum í samanburði. T.d. lækka meðaldagvinnulaun flestra stéttarféлага yfir sumarmánuðina, vegna þess að sumarafleysingafólkið kemur inn í lægstu starfsaldursþrepin og verður að taka tillit til þess, þegar sumarmánuðirnir eru bornir saman við aðra mánuði.

Meðallaun og kaupmáttur lítilla hópa, geta breyst mjög mikið við það eitt, að nokkrir starfsmenn í efsta starfsaldursþrepi fara á eftirlaun en nýliðar taka við.

Stærsta vandamálið er þó að ná í samanburðarhæfar tölur um laun og aðrar

greiðslur til launþega á almennum vinnu-umarkaði og þeirra opinberu starfsmanna sem ekki eru í launavinnslukerfi ríkisins eða launavinnslukerfi Reykjavíkurborgar

KOS vinnur að því m.a. að finna leiðir til að endurbæta talnaefnið með tilliti til ofantalinna þátta.

Breytingar voru gerðar á útliti og innihaldi 20. Fréttarits KOS. Meðallaun á félög og hópa voru kyngreind, ef fjöldi karla eða kvenna nær 10 stöðugildum. Myndir sýna nú dreifingu dagvinnulauna innan hvers félags/hóps. Markmiðið með breytingunum er að gefa lesendum betri upplýsingar. Ætlunin er að fitja upp á frekari breytingum í framtíðinni.

1.3 Listi yfir stéttarfélög og hópa sem eru í heftinu

BSRB, ríkisstarfsmenn

Félag flugmálastarfsmanna ríkisins
Félag starfsmanna stjórnarráðsins
Landssamband Lögreglumanna
Sjúkraliðafélag Íslands
Starfsmannafélag ríkisútvarpsins
Starfsmannafélag sjónvarpsins
Starfsmannafélag ríkisstofnana, tæknih.
Starfsmannafélag ríkisst., skrifstofuh.
Starfsmannafélag ríkisstofnana, heilbr.h.
Starfsmannafélag ríkisstofnana, alls
Tollvarðafélag Íslands
BSRB félögin hjá ríkinu, alls

BHM, ríkisstarfsmenn

Félag tækniháskólakennara
Kennarafélag KHÍ (Kennaraháskóla Íslands)
Dýralæknafélag Íslands
Stéttarfélag sálfræðinga á Íslandi.
Stéttarfélag sjúkraþjálfara
Iðjuþjálfafélag Íslands
Stéttarfélag íslenskra félagsráðgjafa
Meinataeknafeleg Íslands
Félag íslenskra geislafræðinga
Félag íslenskra náttúrufræðinga
Fél. ísl. félagsvísindamanna
Félag íslenskra fræða - kjaradeild
Ljósmeðrafélag Íslands
Stéttarfélag bókasafns- og upplýsingafræðinga
Félag fréttamanna
Félag háskólakennara
Félag háskólakennara á Akureyri
Fél. háskólam. starfsm. stjórnarráðsins
Félag íslenskra hjúkrunarfræðinga
Kjaraf. viðskipta- og hagfræðinga
Stéttarfél. háskólam. á matvæla- og næringsviði
Stéttarfélag lögfræðinga
Útgardur, félag háskólamanna
Þroskaþjálfafélag Íslands
BHM félögin hjá ríkinu, alls

Kennarasamband Íslands

Kennarasamband Íslands framhaldsskólar

Ýmsir hópar ríkisstarfsmanna

Félag íslenskra flugumferðarstjóra
Kjarafélag Tæknifræðingafélags Íslands
Læknafeleg Íslands
Starfsmannafél. Sinfóníuhlj. Íslands
Stéttarfélag verkfræðinga
Heilsugæslulæknar
Kjaranefnd prófessorar
Kjaradómur
Kjaradómur, dómara
Kjaranefnd
Leikarafélag Íslands
Utan félaga
Kjaranefnd prestar þjóðkirkjunnar
Stéttarfélag íslenskra lyfjafræðinga
Starfsmannafélag Alþingis

Reykjavíkurborg

Starfsmannafélag Reykjavíkurborgar
án háskólahóps
Starfsmannafélag Reykjavíkurborgar, háskólahópur
Starfsmannafélag Reykjavíkurborgar alls
Félag íslenskra leikskólakennara hjá Rborg.
Sjúkraliðafélag Íslands
Háskólahópur innan BHM
Háskólahópur utan bandalaga
Kennarahópur hjá Rborg

Önnur sveitarfélög.

Kos hefur m.a. að markmiði að safna upplýsingum frá öllum kaupstöðum og þeim sveitarfélögum sem hafa 1000 íbúa eða fleiri. Launakerfin sem notuð eru í sveitarfélögum hafa verið undirbúin til þess að skila gögnum, eða þá að verið er að undirbúa þau til þess að geta skilað þessum gögnum til KOS. Jafnframt hafa sum sveitarfélögin verið að skipta um tölvukerfi. Kjararannsóknarnefnd (ASÍ og SA, skammstafað KRN) hefur unnið að því undanfarin ár að þróa prófunarforrit á þessi gögn. Áfram munu KOS og KRN safna upplýsingum sameiginlega frá sveitarfélögum. Í þessu hefti KOS eru ekki nýjar upplýsingar frá öðrum sveitarfélögum en Reykjavíkurborg, vegna starfsmannaskorts.

2. Starfsmenn ríkis og Reykjavíkurborgar

Hér á eftir fer yfirlit um samsetningu hópa og bandalaga skipt eftir kyni, upplýsingar um meðallaun og að síðustu

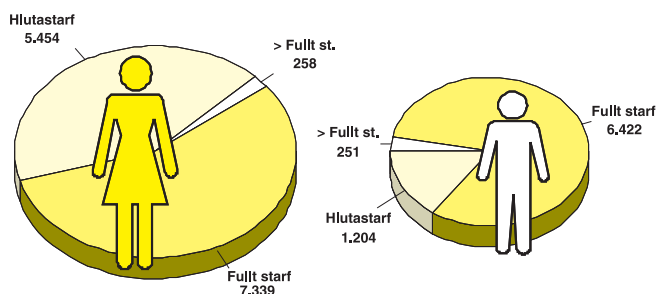
dreifing dagvinnulauna karla og kvenna skipt eftir stéttarfélögum/hópum.

2.1 Yfirlit um skiptingu og fjölda opinberra starfsmanna ríkis og Reykjavíkurborgar í nóvember 2003

Alls voru 20.928 einstaklingar í gagnasafninu í nóvember 2003. Það svarar til u.þ.b. 13,7 % af fjölda vinnandi manna á

Íslandi. Konur voru 13.051 og karlar voru 7.877.

Mynd 2.1.1. Skipting fjölda eftir kyni og hlutfalli starfs



Taflan hér á eftir sýnir skiptingu starfsmanna eftir kyni og starfshlutfalli innan bandalaga og hópa. Eingöngu er um að ræða ríkisstarfsmenn neðangreindra bandalaga og hópa.

Tölurnar fyrir Reykjavíkurborg sýna skiptingu allra opinberra starfsmanna Reykjavíkurborgar.

Tafla 2.1.1 Skipting fjölda eftir hópum, kynjum og hlutfalli starfs.

Hópur	Kyn	Hlutastarf		Fullt starf		>Fullt starf		Samtölur	
		Fjöldi	Hlutfall	Fjöldi	Hlutfall	Fjöldi	Hlutfall	Fjöldi	Hlutfall
BSRB ríkisstarfsmenn	Karlar	378	15,92%	1.912	80,54%	84	3,538%	2.374	100,00%
	Konur	2.147	47,86%	2.257	50,31%	82	1,828%	4.486	100,00%
BHM ríkisstarfsmenn	Karlar	209	13,37%	1.303	83,37%	51	3,263%	1.563	100,00%
	Konur	1.582	44,31%	1.890	52,94%	98	2,745%	3.570	100,00%
Kennarasamband Íslands	Karlar	57	8,28%	625	90,84%	6	0,872%	688	100,00%
	Konur	136	20,36%	530	79,34%	2	0,299%	668	100,00%
Ýmsir ríkisstarfsmenn	Karlar	219	12,64%	1.433	82,74%	80	4,619%	1.732	100,00%
	Konur	109	17,78%	479	78,14%	25	4,078%	613	100,00%
Starfsmenn Reykjavíkurborgar	Karlar	341	22,43%	1.149	75,59%	30	1,974%	1.520	100,00%
	Konur	1.480	39,85%	2.183	58,78%	51	1,373%	3.714	100,00%

Hlutfallstölur eru reiknaðar af heildarfjölda einstaklinga innan hvers kyns innan hvers hóps eða bandalags

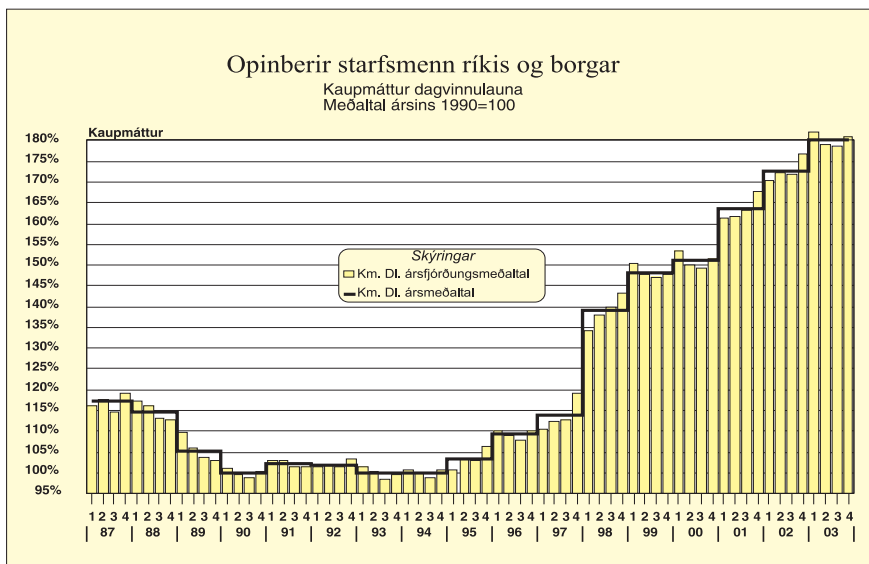
2.2 Meðallaun opinberra starfsmanna ríkis og Reykjavíkurborgar frá og með 1. ársfjórðungi 1987. Kaupmáttur miðast við meðaltal ársins 1990 = 100

Ár	Stg.	DI.	Breyting	HI.	Breyting	Km.DI	Km.HI.
1987	16.805,15	49.904		71.855		117,12	115,94
1988	17.515,13	61.496	23,23%	87.804	22,20%	114,76	112,65
1989	18.064,45	68.203	10,91%	97.777	11,36%	105,41	103,89
1990	18.486,49	74.761	9,62%	108.744	11,22%	100,00	100,00
1991	18.497,11	81.604	9,15%	121.686	11,90%	102,21	104,78
1992	19.011,68	84.693	3,79%	126.520	3,97%	102,01	104,77
1993	19.093,22	86.323	1,92%	128.262	1,38%	99,93	102,08
1994	19.539,24	87.785	1,69%	132.140	3,02%	100,06	103,55
1995	19.856,16	92.178	5,00%	138.914	5,13%	103,36	107,09
1996	19.786,59	99.605	8,06%	150.291	8,19%	109,23	113,31
1997	19.016,52	105.545	5,96%	160.072	6,51%	113,71	118,56
1998	17.511,81	131.229	24,33%	189.300	18,26%	138,99	137,84
1999	16.845,24	144.540	10,14%	207.022	9,36%	148,30	146,03
2000	17.980,55	154.867	7,14%	223.304	7,86%	151,11	149,79
2001	17.910,40	178.289	15,12%	252.606	13,12%	163,51	159,27
2002	18.813,88	198.185	11,16%	275.224	8,95%	172,81	164,99
2003	19.080,98	210.850	6,39%	291.807	6,03%	180,16	171,41

Ár	Ársfj.	Stg.	DI.	Breyting	HI.	Breyting	Km.DI	Km.HI.
1987	1	16.278,38	45.924		67.405		116,34	117,40
	2	16.902,54	48.539	5,69%	71.362	5,87%	117,77	119,04
	3	17.192,63	49.911	2,83%	67.825	-4,96%	114,64	107,10
	4	16.847,04	55.113	10,42%	80.764	19,08%	119,25	120,15
1988	1	16.921,24	57.982	5,21%	84.801	5,00%	117,16	117,81
	2	17.526,45	60.208	3,84%	86.140	1,58%	116,16	114,25
	3	18.013,09	63.401	5,30%	85.895	-0,28%	113,09	105,34
	4	17.599,75	64.208	1,27%	94.302	9,79%	112,71	113,80
1989	1	17.743,25	64.779	0,89%	95.078	0,82%	109,56	110,56
	2	18.210,10	67.116	3,61%	96.240	1,22%	106,13	104,63
	3	18.495,68	68.825	2,55%	94.171	-2,15%	103,70	97,55
	4	17.808,75	72.078	4,73%	105.782	12,33%	102,84	103,76
1990	1	18.022,80	73.616	2,13%	105.445	-0,32%	101,17	99,63
	2	18.304,75	74.121	0,69%	107.576	2,02%	99,63	99,41
	3	19.252,42	74.731	0,82%	102.054	-5,13%	98,85	92,80
	4	18.366,00	76.555	2,44%	120.158	17,74%	100,35	108,29
1991	1	17.878,81	79.648	4,04%	119.665	-0,41%	103,07	106,46
	2	18.667,43	81.055	1,77%	121.795	1,78%	102,83	106,23
	3	19.288,88	82.025	1,20%	114.704	-5,82%	101,33	97,42
	4	18.153,31	83.649	1,98%	130.983	14,19%	101,61	109,39
1992	1	18.659,89	83.934	0,34%	125.462	-4,22%	101,42	104,23
	2	19.206,39	84.287	0,42%	127.366	1,52%	101,76	105,72
	3	19.584,69	84.367	0,09%	117.116	-8,05%	101,43	96,80
	4	18.595,74	86.217	2,19%	136.610	16,65%	103,48	112,72
1993	1	18.531,27	86.341	0,14%	127.949	-6,34%	101,57	103,48
	2	19.210,56	85.963	-0,44%	127.954	0,00%	100,39	102,73
	3	19.799,55	85.587	-0,44%	119.030	-6,97%	98,32	94,01
	4	18.831,49	87.448	2,17%	138.590	16,43%	99,53	108,44
1994	1	18.910,64	88.049	0,69%	130.674	-5,71%	100,78	102,83
	2	19.690,19	87.544	-0,57%	134.501	2,93%	99,94	105,56
	3	20.252,67	86.956	-0,67%	122.102	-9,22%	98,88	95,46
	4	19.303,45	88.641	1,94%	141.699	16,05%	100,72	110,69
1995	1	17.890,62	89.188	0,62%	134.113	-5,35%	100,53	103,93
	2	20.408,56	91.493	2,58%	140.400	4,69%	103,17	108,85
	3	21.116,89	92.109	0,67%	128.459	-8,50%	103,03	98,78
	4	20.008,56	95.622	3,81%	152.724	18,89%	106,35	116,77
1996	1	20.040,51	99.458	4,01%	149.069	-2,39%	110,15	113,50
	2	20.781,34	99.189	-0,27%	150.624	1,04%	109,06	113,86
	3	20.330,94	98.658	-0,54%	138.882	-7,80%	107,69	104,22
	4	17.993,58	101.318	2,70%	164.159	18,20%	110,25	122,81
1997	1	18.517,27	101.711	0,39%	159.611	-2,77%	110,60	115,92
	2	19.308,21	103.895	2,15%	164.881	3,30%	112,22	118,90
	3	19.843,03	105.106	1,17%	153.364	-6,99%	112,88	110,00
	4	18.397,58	111.610	6,19%	182.644	19,09%	119,21	130,01
1998	1	16.957,25	126.325	13,18%	182.724	0,04%	134,40	133,66
	2	17.644,34	130.526	3,33%	189.726	3,83%	137,94	137,85
	3	18.127,02	132.073	1,19%	179.207	-5,54%	140,04	130,63
	4	17.318,64	135.862	2,87%	205.869	14,88%	143,41	149,40
1999	1	16.361,06	143.226	5,42%	202.797	-1,49%	150,30	146,31
	2	16.994,97	142.853	-0,26%	206.290	1,72%	147,82	146,75

Ár	Ársfj.	Stg.	DI.	Breyting	HI.	Breyting	Km.DI	Km.HI.
	3	17.386,24	144.524	1,17%	196.093	-4,94%	147,22	137,32
	4	16.638,70	147.573	2,11%	223.344	13,90%	147,95	153,94
2000	1	17.625,33	154.535	4,72%	221.613	-0,78%	153,30	151,14
	2	18.300,45	153.530	-0,65%	223.291	0,76%	150,17	150,15
	3	18.472,61	153.764	0,15%	212.719	-4,73%	149,47	142,16
	4	17.523,80	157.760	2,60%	236.176	11,03%	151,63	156,06
2001	1	17.449,29	168.690	6,93%	238.655	1,05%	161,18	156,77
	2	18.030,74	174.515	3,45%	252.625	5,85%	161,64	160,87
	3	18.521,30	180.920	3,67%	245.241	-2,92%	163,15	152,04
	4	17.640,28	188.881	4,40%	274.121	11,78%	167,68	167,30
2002	1	19.420,35	194.559	3,01%	266.507	-2,78%	170,49	160,56
	2	18.655,54	197.296	1,41%	277.352	4,07%	172,29	166,51
	3	19.010,89	197.368	0,04%	264.311	-4,70%	172,05	158,41
	4	18.168,74	203.827	3,27%	293.774	11,15%	176,64	175,03
2003	1	18.397,57	211.438	3,73%	289.705	-1,39%	182,17	171,60
	2	19.409,86	209.104	-1,10%	291.487	0,62%	178,91	171,46
	3	19.813,32	209.041	-0,03%	279.459	-4,13%	178,73	164,27
	4	18.703,17	214.001	2,37%	307.286	9,96%	180,98	178,67

Mynd 2.2.1



Ath. að stór hópur ríkisstarfsmanna fellur út úr gagnasafni KOS frá og með áramótum 1996 -1997, s.s. starfsmenn

Pósts og Síma og grunnskólakennarar annarra sveitarfélaga en Reykjavíkurborgar.

Ástæða er til að vekja sérstaka athygli á breyttum hlutföllum launategunda hjá mörgum stéttarfélögum, sem m.a. má rekja til nýja launakerfisins, sem tók gildi í kjölfar kjarasamninga sem gerðir voru árið 1997. Dagvinnulaunahluti þeirra eykst en yfirvinnuhluti minnkar.

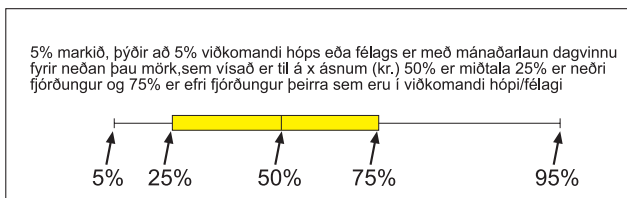
Jafnframt geta verið sveiflur í launum á milli mánaða hjá einstökum stéttarfélögum og/eða hópum vegna afturvirkra leiðréttinga á launum.

2.3 Dreifing dagvinnulauna stéttarfélaga og hópa eftir kyni í nóvember 2003.

Hér á eftir eru sýnd gröf, þar sem er búið að reikna dreifingu mánaðarlauna í dagvinnu hjá stéttarfélögum/hópum. Miðað er við nóvembermánuð 2003 og dagvinnulaun mánaðarins eru eins og áður

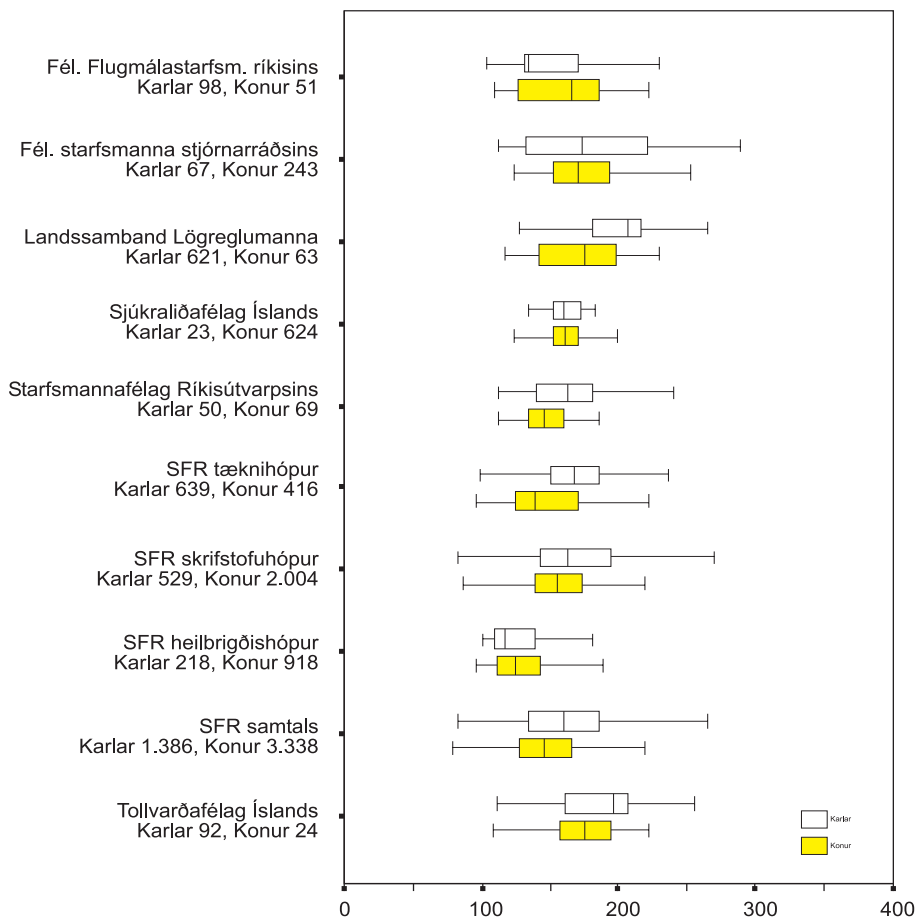
uppreiknuð miðað við fullt starf. Starfsmönnum með minna en 10% starf var sleppt. Fjöldi starfsmanna af hvoru kyni er sýndur fyrir neðan nafn hvers félags/hóps.

Skýring:



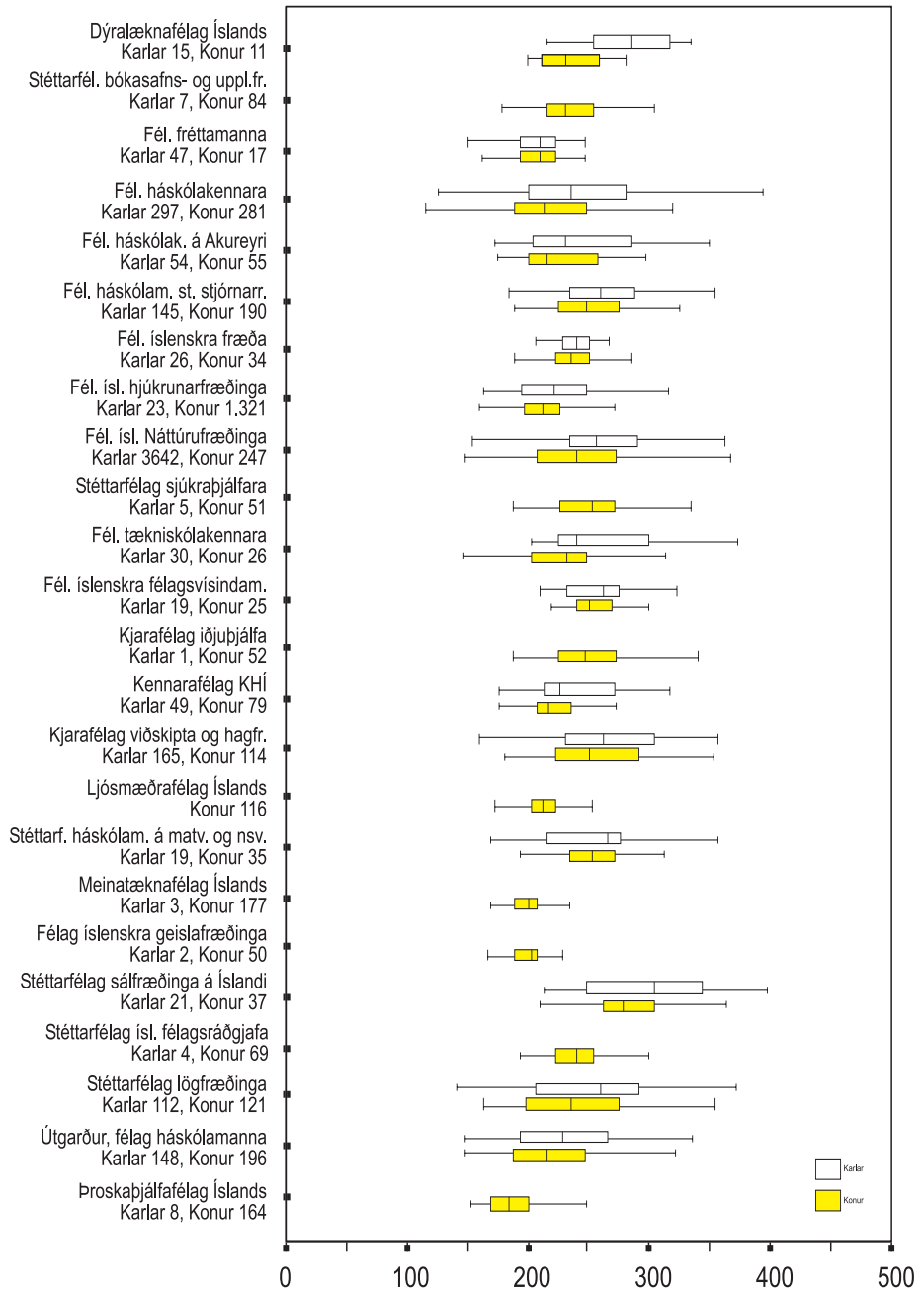
Mynd 2.3.1

*Dreifing dagvinnulauna í nóvember 2003
BSRB ríkisstarfsmenn*



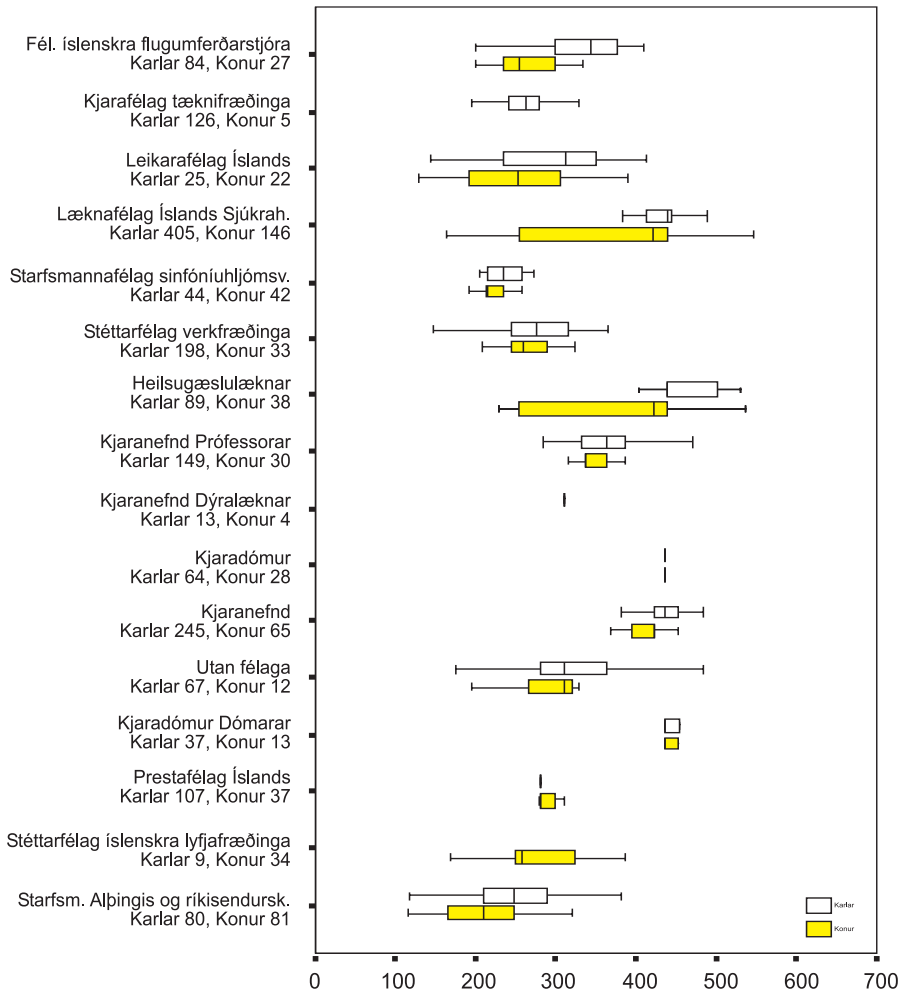
*Dreifing dagvinnulauna í nóvember 2003
BHM ríkisstarfsmenn*

Mynd 2.3.2



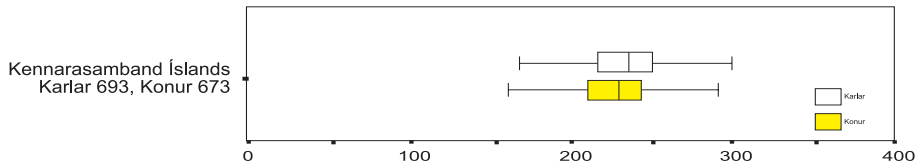
Mynd 2.3.3

*Dreifing dagvinnulauna í nóvember 2003
ÝMSIR ríkisstarfsmenn*



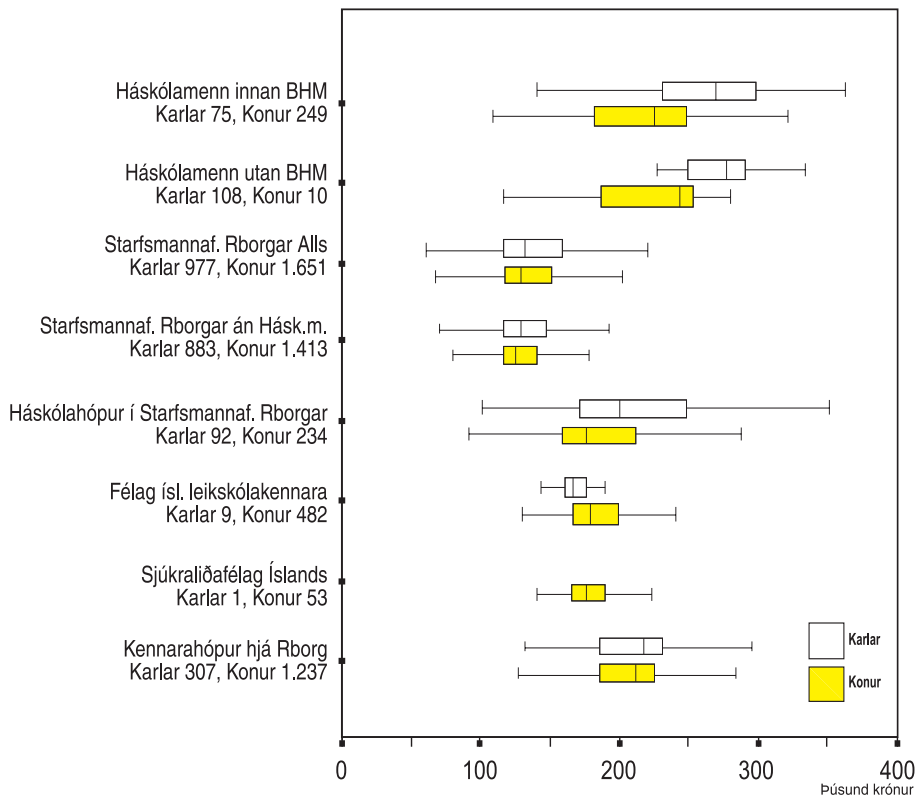
Mynd 2.3.4

*Dreifing dagvinnulauna í nóvember 2003
Kennarasamband Íslands ríkisstarfsmenn*



Mynd 2.3.5

*Dreifing dagvinnulauna í nóvember 2003
Starfsmenn Reykjavíkurborgar*



3. Meðaltal dagvinnulauna, yfirvinnulauna og annarra launa, ásamt heildarlaunum og kaupmætti dagvinnulauna, skipt eftir kyni

Athuga ber að önnur laun fyrir apríl og desember eru heldur hærrí en aðra mánuði í eftirtöldum töflum því orlofsframlag, desemberuppbót og óregluleg önnur laun eru meðtalin.

Ástæða er til að vekja sérstaka athygli á breyttum hlutföllum launategunda hjá mörgum stéttarfélögum, sem m.a. má rekja til nýja launakerfisins, sem tók gildi í kjölfar kjarasamninga á árabílinu 1997 - 2002. Dagvinnulaunahluti þeirra eykst en yfirvinnuhluti minnkar.

Jafnframt geta verið sveiflur í launum á milli mánaða hjá einstökum stéttarfélögum og/eða hópum vegna afturvirkra leiðréttinga á launum.

Hér á næstu síðum eru útreiknuð meðallaun eftir félögum, hópum og bandalögum ásamt kaupmætti dagvinnulauna.

Kaupmáttur miðar við janúar 1987 = 100, nema annað sé tekið sérstaklega fram.

Ekki eru birtar kynskiptar meðaltölur fyrir hópa sem hafa færri en 10 stöðugildi annaðhvort hjá körlum eða konum.

Skýringar:

MA = mánuður	DL = dagvinnulaun
YL = yfirvinnulaun	ÖL = önnur laun
HL = heildarlaun	Km.dl. = kaupmáttur dagvinnulauna
STG = stöðugildi	AR = Ár

Félag flugmálastarfsmanna ríkisins

		<i>Karlar</i>						<i>Allir</i>						<i>Konur</i>				
MA	AR	STG	DL	YL	OL	HL	STG	DL	YL	OL	HL	Km.dl.	STG	DL	YL	OL	HL	
1	2003	86,39	156.985	83.293	54.192	294.470	126,64	160.581	76.024	42.189	278.794	157,27	40,25	168.299	60.425	16.426	245.149	
2	2003	83,36	156.929	82.680	47.927	287.537	124,22	160.518	77.409	37.795	275.723	157,47	40,86	167.839	66.656	17.124	251.620	
3	2003	82,95	156.829	83.212	48.921	288.962	124,88	160.368	76.168	38.407	274.943	155,65	41,93	167.369	62.234	17.611	247.214	
4	2003	85,73	156.173	90.068	56.272	302.512	128,20	159.444	81.480	46.860	287.784	154,58	42,47	166.047	64.146	27.862	258.055	
5	2003	92,29	154.054	85.975	47.250	287.280	137,74	156.994	78.176	37.543	272.712	152,43	45,45	162.962	62.339	17.830	243.132	
6	2003	104,43	148.747	84.309	39.055	272.111	158,24	151.094	79.275	30.673	261.042	146,61	53,81	155.649	69.506	14.408	239.562	
7	2003	107,69	148.600	78.423	38.162	265.185	162,51	150.930	76.902	31.752	259.584	146,59	54,82	155.507	73.915	19.162	248.584	
8	2003	104,34	148.871	88.248	40.706	277.825	157,79	151.395	86.471	33.491	271.357	147,17	53,46	156.320	83.003	19.408	258.731	
9	2003	95,66	153.858	84.861	41.783	280.502	141,56	156.970	82.715	34.278	273.963	151,52	45,90	163.456	78.241	18.635	260.332	
10	2003	95,72	154.403	78.917	45.305	278.624	143,01	157.336	75.215	35.881	268.432	151,18	47,29	163.273	67.723	16.807	247.803	
11	2003	94,57	153.811	78.999	48.837	281.646	142,12	157.386	74.779	38.194	270.358	151,02	47,55	164.496	66.387	17.025	247.907	
12	2003	93,15	153.881	74.210	87.208	315.298	138,45	156.724	69.958	78.142	304.824	149,93	45,30	162.572	61.215	59.499	283.286	

Félag starfsmanna stjórnarráðsins

		<i>Karlar</i>					<i>Allir</i>					<i>Konur</i>					
MA	AR	STG	DL	YL	ÖL	HL	STG	DL	YL	ÖL	HL	Km.dl.	STG	DL	YL	ÖL	HL
1	2003	60,19	173.795	111.078	19.028	303.900	278,95	172.282	46.920	4.575	223.777	149,09	218,76	171.866	29.268	598	201.732
2	2003	60,93	180.618	113.773	22.217	316.608	279,61	173.946	48.221	5.492	227.659	150,79	218,68	172.087	29.957	832	202.876
3	2003	63,81	179.173	105.232	25.022	309.428	283,00	173.608	47.837	6.203	227.648	148,90	219,19	171.987	31.129	725	203.841
4	2003	61,91	177.309	107.961	34.242	319.512	285,31	173.907	46.711	16.848	237.467	148,98	223,40	172.965	29.737	12.028	214.730
5	2003	63,06	176.430	121.273	24.298	322.001	292,19	172.154	48.252	7.195	227.601	147,70	229,13	170.977	28.155	2.487	201.619
6	2003	69,91	169.863	95.788	23.063	288.714	312,35	169.239	44.040	7.346	220.624	145,11	242,44	169.059	29.117	2.813	200.989
7	2003	67,73	171.684	90.900	24.869	287.454	313,00	169.582	40.143	8.042	217.767	145,54	245,27	169.001	26.127	3.396	198.524
8	2003	68,99	171.734	91.347	20.769	283.850	312,22	170.352	38.957	7.360	216.669	146,33	243,24	169.960	24.098	3.557	197.615
9	2003	62,75	175.865	104.519	24.294	304.678	288,34	174.333	43.403	8.320	226.056	148,70	225,59	173.907	26.403	3.876	204.186
10	2003	63,19	177.916	102.836	26.034	306.786	289,66	175.092	46.954	8.682	230.728	148,66	226,47	174.304	31.362	3.841	209.507
11	2003	65,40	178.650	97.960	30.114	306.724	292,85	175.127	44.313	9.110	228.549	148,49	227,45	174.114	28.887	3.070	206.071
12	2003	64,03	178.467	94.845	66.805	340.118	295,65	174.665	44.630	45.356	264.650	147,65	231,62	173.613	30.748	39.426	243.788

BSRB, ríkisstarfsmenn

Landssamband lögreglumanna											
		Kortar									
MA	AR	STG	DL	YL	ÖL	HL	ÖL	YL	DL	YL	HL
1	2003	620,55	204,831	107,360	71,816	384,008	672,89	202,655	104,383	377,458	167,82
2	2003	613,40	204,471	95,383	67,114	366,968	666,12	202,361	92,848	65,984	361,193
3	2003	616,36	204,743	96,626	60,696	362,065	668,15	202,646	94,348	59,815	356,808
4	2003	636,53	205,772	98,622	72,836	377,230	688,79	203,652	96,712	72,282	372,645
5	2003	644,45	199,542	109,875	65,492	374,909	711,64	196,439	105,659	63,317	365,415
6	2003	703,42	194,952	95,382	62,080	352,414	779,75	191,783	92,216	60,836	344,835
7	2003	698,17	194,895	85,935	51,552	332,382	775,19	191,561	83,379	51,548	326,488
8	2003	701,19	194,643	89,415	52,077	336,136	776,94	191,330	86,933	51,651	329,914
9	2003	642,38	199,625	87,290	60,188	347,103	710,16	196,405	84,346	59,799	340,550
10	2003	630,57	202,044	91,744	63,630	357,419	695,84	198,927	88,473	62,373	349,773
11	2003	618,03	202,653	94,725	67,482	364,860	681,02	199,696	91,321	66,353	357,370
12	2003	609,49	204,061	96,750	114,973	415,784	666,70	201,949	94,139	113,584	409,672

Sjúkraliðafélag Íslands											
		Kortar									
MA	AR	STG	DL	YL	ÖL	HL	ÖL	YL	DL	YL	HL
1	2003	21,14	152,688	62,795	51,119	266,603	500,51	155,888	52,222	37,446	245,556
2	2003	24,62	149,638	46,442	39,989	236,068	512,20	155,675	38,682	34,707	229,063
3	2003	22,66	150,262	47,620	50,697	248,579	513,49	155,789	43,270	38,552	237,611
4	2003	22,62	150,071	72,846	62,559	285,475	513,43	156,008	85,142	45,167	286,317
5	2003	24,31	148,277	59,116	48,463	255,856	525,19	155,489	63,436	36,240	255,165
6	2003	21,64	157,271	50,384	45,175	252,831	547,50	158,464	53,889	31,525	243,878
7	2003	21,63	158,021	31,946	48,745	218,712	537,80	158,591	34,736	25,896	219,224
8	2003	21,64	158,063	38,654	32,169	228,886	537,87	158,966	45,280	28,465	232,711
9	2003	21,00	158,862	54,172	48,936	261,970	514,95	160,310	43,791	35,668	239,769
10	2003	22,27	158,150	53,984	56,486	268,620	514,94	160,542	46,030	38,156	244,728
11	2003	20,64	159,008	47,842	52,175	259,025	512,95	160,882	45,754	39,620	246,256
12	2003	20,75	159,353	60,220	97,736	317,310	514,39	161,266	60,199	74,852	296,318

Kaupmátur miðast við 01/1992 = 100,00

Starfsmannafélag ríkisútvarpsins*Starfsmannafélag sjónvarpsins sameinast Starfsmannafélagi ríkisútvarpsins frá og með janúar 2002*

		<i>Karlar</i>					<i>Allir</i>						<i>Konur</i>				
MA	AR	STG	DL	YL	ÖL	HL	STG	DL	YL	ÖL	HL	Km.dl.	STG	DL	YL	ÖL	HL
1	2003	47,77	163.025	91.327	15.227	269.580	104,57	155.378	73.180	9.507	238.065	136,73	56,80	148.945	57.917	4.697	211.560
2	2003	45,65	166.032	84.550	15.159	265.741	102,68	156.446	68.114	9.303	233.863	137,91	57,03	148.772	54.957	4.615	208.344
3	2003	45,52	165.556	74.252	12.368	252.175	101,48	156.525	56.098	7.766	220.388	136,51	55,96	149.179	41.330	4.022	194.531
4	2003	46,62	164.878	73.710	23.519	262.107	103,45	156.453	58.159	18.167	232.779	136,29	56,83	149.543	45.403	13.777	208.723
5	2003	50,91	160.069	90.083	10.638	260.789	111,53	154.325	73.669	6.444	234.438	134,64	60,62	149.501	59.884	2.921	212.307
6	2003	53,33	157.417	57.762	9.994	225.172	120,96	152.103	52.840	6.536	211.479	132,61	67,63	147.912	48.960	3.809	200.681
7	2003	54,95	158.257	58.518	11.209	227.984	123,78	152.416	49.726	7.111	209.253	133,01	68,83	147.752	42.708	3.839	194.300
8	2003	55,68	161.308	53.029	9.411	223.748	121,96	154.692	48.692	6.089	209.474	135,12	66,28	149.134	45.049	3.298	197.482
9	2003	49,93	162.338	72.716	12.225	247.279	111,71	155.948	62.314	7.928	226.190	135,26	61,79	150.784	53.908	4.457	209.148
10	2003	48,96	162.543	71.118	13.233	246.893	110,58	156.025	61.746	7.774	225.544	134,71	61,62	150.846	54.299	3.436	208.581
11	2003	47,21	163.148	69.776	11.931	244.856	107,13	156.275	60.215	8.105	224.595	134,74	59,91	150.859	52.680	5.089	208.629
12	2003	48,44	162.584	71.595	47.922	282.102	109,55	156.080	57.575	43.243	256.898	134,17	61,11	150.925	46.462	39.534	236.921

Starfsmannafélag ríkisstofnana, tæknihópur

		<i>Karlar</i>					<i>Allir</i>						<i>Konur</i>				
MA	AR	STG	DL	YL	ÖL	HL	STG	DL	YL	ÖL	HL	Km.dl.	STG	DL	YL	ÖL	HL
1	2003	666,70	166.546	70.971	16.951	254.468	1.061,36	159.202	60.745	14.066	234.013	151,00	394,66	146.797	43.469	9.192	199.458
2	2003	659,82	167.343	70.232	18.273	255.848	1.053,49	159.811	60.476	15.778	236.065	151,83	393,67	147.185	44.124	11.596	202.905
3	2003	666,18	167.113	70.389	18.615	256.117	1.061,68	159.644	60.300	15.770	235.714	150,07	395,50	147.063	43.306	10.979	201.348
4	2003	662,80	167.350	72.016	29.057	268.423	1.058,31	159.780	61.077	26.086	246.943	150,02	395,51	147.094	42.746	21.105	210.946
5	2003	727,96	162.986	72.174	18.084	253.245	1.169,18	155.883	60.839	14.797	231.519	146,58	441,22	144.163	42.138	9.373	195.674
6	2003	836,51	157.783	62.202	13.999	233.985	1.416,90	149.555	49.662	11.736	210.953	140,54	580,40	137.695	31.589	8.475	177.759
7	2003	835,73	158.261	56.970	12.149	227.380	1.422,30	149.805	45.601	11.025	206.431	140,91	586,57	137.757	29.402	9.424	176.583
8	2003	780,29	160.437	61.994	13.376	235.807	1.320,66	151.832	50.292	11.816	213.940	142,94	540,37	139.405	33.396	9.563	182.364
9	2003	679,16	166.843	70.468	15.470	252.780	1.075,93	159.593	58.212	13.369	231.174	149,19	396,77	147.183	37.233	9.774	194.191
10	2003	662,14	167.886	79.838	15.816	263.539	1.037,52	160.933	67.174	13.923	242.030	149,76	375,38	148.668	44.836	10.584	204.089
11	2003	607,46	170.458	82.751	18.720	271.929	945,12	163.481	70.209	16.179	249.869	151,92	337,66	150.928	47.646	11.608	210.182
12	2003	595,73	169.285	84.989	60.759	315.033	878,51	164.155	76.297	62.213	302.665	152,09	282,79	153.348	57.986	65.277	276.610

Starfsmannafélag ríkisstofnana, skrifstofuhópur

	AR	<i>Karlar</i>					<i>Allir</i>						<i>Konur</i>				
		STG	DL	YL	ÖL	HL	STG	DL	YL	ÖL	HL	Km.dl.	STG	DL	YL	ÖL	HL
1	2003	386,68	182.230	73.708	8.396	264.334	1.930,54	164.381	36.167	3.409	203.957	155,17	1.543,86	159.911	26.764	2.159	188.835
2	2003	395,15	183.296	74.503	10.160	267.960	1.962,78	165.012	37.779	3.980	206.770	156,03	1.567,64	160.403	28.522	2.422	191.347
3	2003	385,38	184.013	76.569	10.540	271.122	1.952,40	165.141	37.663	4.226	207.031	154,50	1.567,02	160.500	28.095	2.674	191.268
4	2003	387,26	183.968	74.472	18.986	277.426	1.972,72	164.977	38.474	13.710	217.160	154,16	1.585,46	160.339	29.681	12.421	202.440
5	2003	412,85	182.109	72.469	7.586	262.164	2.089,61	163.672	37.710	3.358	204.739	153,17	1.676,76	159.133	29.151	2.317	190.600
6	2003	461,70	175.566	63.800	7.534	246.899	2.288,65	160.419	34.636	3.363	198.417	150,03	1.826,95	156.591	27.265	2.309	186.165
7	2003	463,31	174.729	65.287	6.738	246.755	2.315,11	159.816	32.488	2.811	195.114	149,61	1.851,80	156.084	24.282	1.829	182.194
8	2003	461,92	176.262	64.485	6.246	246.992	2.279,76	160.801	32.507	3.034	196.342	150,67	1.817,84	156.872	24.381	2.218	183.472
9	2003	408,72	182.650	80.674	7.810	271.134	2.044,55	165.050	38.628	3.320	206.998	153,56	1.635,83	160.653	28.122	2.199	190.973
10	2003	411,62	182.571	78.168	7.614	268.353	2.032,52	165.643	39.387	3.459	208.489	153,41	1.620,90	161.344	29.539	2.403	193.286
11	2003	489,75	175.371	68.496	9.325	253.193	2.218,05	163.321	36.322	4.289	203.932	151,05	1.728,30	159.907	27.205	2.861	189.973
12	2003	524,65	173.032	63.412	42.940	279.384	2.382,19	162.122	35.310	38.894	236.326	149,49	1.857,54	159.040	27.373	37.751	224.165

Starfsmannafélag ríkisstofnana, heilbrigðishópur

MA	AR	<i>Karlar</i>					<i>Allir</i>						<i>Konur</i>				
		STG	DL	YL	ÖL	HL	STG	DL	YL	ÖL	HL	Km.dl.	STG	DL	YL	ÖL	HL
1	2003	186,53	127.942	55.100	37.420	220.462	882,01	131.982	47.389	31.565	210.935	131,85	695,47	133.065	45.320	29.994	208.380
2	2003	182,61	128.203	27.669	40.927	196.800	876,47	132.145	25.207	34.221	191.572	132,24	693,86	133.182	24.559	32.456	190.197
3	2003	177,79	128.921	28.159	37.681	194.761	884,82	132.175	24.580	31.261	188.016	130,87	707,02	132.994	23.679	29.647	186.320
4	2003	184,64	128.992	29.572	48.092	206.656	916,73	133.405	28.431	42.346	204.182	131,93	732,09	134.518	28.143	40.897	203.558
5	2003	194,78	128.596	67.162	31.757	227.515	986,67	132.311	56.569	25.844	214.724	131,04	791,89	133.224	53.963	24.390	211.578
6	2003	225,03	128.768	37.153	29.917	195.838	1.157,50	131.484	35.487	26.717	193.689	130,14	932,47	132.140	35.085	25.945	193.170
7	2003	220,29	129.102	26.902	27.749	183.753	1.153,21	131.387	24.699	24.266	180.352	130,17	932,92	131.927	24.178	23.444	179.549
8	2003	222,09	127.680	27.917	30.882	186.479	1.139,03	130.872	24.625	25.040	180.537	129,78	916,93	131.645	23.827	23.625	179.098
9	2003	178,66	130.248	28.154	37.034	195.437	908,82	133.773	27.763	31.247	192.783	131,72	730,16	134.635	27.667	29.832	192.134
10	2003	179,91	131.011	31.971	41.159	204.141	902,80	134.310	28.683	33.737	196.730	131,64	722,89	135.131	27.865	31.889	194.885
11	2003	159,37	130.394	31.163	42.592	204.150	812,49	133.199	29.385	36.360	198.945	130,37	653,12	133.884	28.951	34.840	197.675
12	2003	154,69	130.535	32.769	81.538	244.842	758,36	131.975	27.792	78.847	238.615	128,79	603,67	132.345	26.517	78.158	237.019

Starfsmannafélag ríkisstofnana, samtals

		<i>Karlar</i>						<i>Allir</i>						<i>Konur</i>				
MA	AR	STG	DL	YL	ÖL	HL	STG	DL	YL	ÖL	HL	Km.dl.	STG	DL	YL	ÖL	HL	
1	2003	1.239,91	165.629	69.437	17.362	252.429	3.873,90	155.586	45.456	12.739	213.780	149,04	2.633,99	150.858	34.167	10.563	195.587	
2	2003	1.237,58	166.662	65.315	19.026	251.002	3.892,74	156.204	41.091	13.982	211.276	149,88	2.655,16	151.329	29.799	11.631	192.760	
3	2003	1.229,35	166.888	66.219	18.841	251.947	3.898,90	156.163	40.858	13.505	210.526	148,25	2.669,54	151.224	29.179	11.048	191.451	
4	2003	1.234,71	166.826	66.439	28.745	262.010	3.947,77	156.252	42.201	23.677	222.131	148,16	2.713,05	151.441	31.170	21.371	203.982	
5	2003	1.335,59	163.882	71.534	16.833	252.249	4.245,46	154.238	48.463	11.734	214.435	146,47	2.909,87	149.812	37.873	9.394	197.079	
6	2003	1.523,24	158.887	58.986	14.391	232.264	4.863,05	150.366	39.217	11.361	200.944	142,71	3.339,82	146.480	30.200	9.980	186.660	
7	2003	1.519,33	159.055	55.147	12.761	226.963	4.890,62	150.201	34.465	10.259	194.925	142,68	3.371,29	146.210	25.144	9.132	180.486	
8	2003	1.464,31	160.461	57.611	13.782	231.854	4.739,45	151.109	35.569	10.770	197.447	143,68	3.275,14	146.928	25.714	9.423	182.064	
9	2003	1.266,54	166.782	67.793	16.040	250.614	4.029,29	156.538	41.407	12.303	210.248	147,79	2.762,76	151.842	29.310	10.590	191.742	
10	2003	1.253,67	167.416	72.420	16.760	256.596	3.972,84	157.293	44.211	13.072	214.576	147,83	2.719,17	152.625	31.206	11.372	195.203	
11	2003	1.256,58	167.292	70.652	18.086	256.030	3.975,66	157.203	42.960	13.670	213.833	147,54	2.719,08	152.541	30.163	11.629	194.332	
12	2003	1.275,07	166.126	69.775	55.948	291.849	4.019,06	156.878	42.851	51.530	251.259	146,79	2.743,99	152.581	30.340	49.477	232.398	

Tollvarðafélag Íslands

		<i>Karlar</i>						<i>Allir</i>						<i>Konur</i>				
MA	AR	STG	DL	YL	ÖL	HL	STG	DL	YL	ÖL	HL	Km.dl.	STG	DL	YL	ÖL	HL	
1	2003	93,11	190.534	115.918	32.791	339.243	115,40	186.529	115.456	33.418	335.403	148,39	22,29	169.797	113.525	36.037	319.358	
2	2003	94,21	188.679	92.440	30.415	311.535	114,71	186.096	93.961	30.489	310.547	148,30	20,50	174.223	100.951	30.830	306.004	
3	2003	93,13	187.847	98.249	36.119	322.215	115,59	184.829	94.171	36.458	315.458	145,73	22,46	172.314	77.259	37.868	287.441	
4	2003	93,85	187.131	95.265	43.037	325.434	117,01	184.610	94.028	43.137	321.775	145,38	23,16	174.395	89.015	43.539	306.949	
5	2003	97,91	186.369	129.315	26.097	341.781	123,13	182.900	126.483	26.385	335.768	144,25	25,21	169.428	115.483	27.503	312.414	
6	2003	108,08	178.538	98.456	28.052	305.046	145,00	171.271	95.425	26.813	293.509	134,99	36,92	149.997	86.553	23.189	259.739	
7	2003	111,98	179.825	83.396	27.348	290.569	148,48	172.316	80.470	29.472	282.258	135,95	36,49	149.277	71.491	35.989	256.757	
8	2003	104,93	179.586	100.653	33.256	313.494	141,77	171.686	95.422	32.729	299.837	135,57	36,84	149.183	80.523	31.227	260.933	
9	2003	91,75	187.621	110.566	39.077	337.265	116,41	183.447	106.651	39.360	329.458	143,84	24,66	167.918	92.081	40.411	300.409	
10	2003	90,73	188.683	103.582	38.224	330.490	113,10	185.865	103.267	37.887	327.019	145,07	22,37	174.432	101.988	36.520	312.939	
11	2003	90,00	189.305	109.145	38.837	337.287	111,63	186.725	106.953	38.482	332.160	145,54	21,63	175.991	97.834	37.005	310.830	
12	2003	90,00	189.305	93.093	81.022	363.420	112,14	186.480	92.421	81.752	360.653	144,91	22,14	174.998	89.688	84.721	349.406	

BSRB, ríkisstarfsmenn

BSRB félagin hjá ríkinu, alls

MA	AR	Kerfar				DL	YL	ÖL	HL	Allir	STG	DL	YL	ÖL	HL	Km.dl.	Konur						
		STG	DL	YL	ÖL												STG	DL	YL	ÖL	HL		
1	2003	2.169,06	177.613	84.406	35.398	297.418	5.680,62	162.817	55.679	22.352	240.848	147,93	3.511,55	153.678	37.934	14.293	205.906	3.540,29	154.055	32.681	14.765	201.501	
2	2003	2.159,75	178.171	77.267	34.543	289.981	5.700,03	163.193	49.575	22.259	235.026	148,53	3.559,45	153.970	32.619	14.837	201.426	3.609,94	154.229	40.366	24.646	219.241	
3	2003	2.153,78	178.401	78.090	33.106	289.597	5.713,24	163.180	49.761	21.724	234.665	146,94	3.846,98	152.565	42.639	13.082	208.286	4.351,32	149.763	35.060	12.873	197.697	
4	2003	2.181,96	178.724	79.396	43.698	301.819	5.791,90	163.457	55.070	31.824	250.350	147,01	6.958,70	156.919	42.415	16.814	216.148	4.377,21	149.489	28.219	11.773	189.480	
5	2003	2.308,52	174.492	86.902	32.426	293.821	6.155,50	160.789	59.244	20.337	240.369	144,83	6.794,83	157.771	45.012	17.580	220.364	4.273,77	150.208	30.169	12.254	192.631	
6	2003	2.584,05	169.369	72.466	29.343	271.178	6.935,36	157.068	49.002	19.015	225.085	141,39	5.920,02	163.110	49.661	20.802	233.573	3.690,01	154.941	33.179	14.479	202.599	
7	2003	2.581,48	169.519	66.485	25.363	261.367	6.958,70	156.919	42.415	16.814	216.148	141,39	5.847,90	164.015	52.317	21.852	238.184	3.642,79	155.714	35.447	15.179	206.341	
8	2003	2.521,07	170.591	70.176	26.610	267.377	6.794,83	157.771	45.012	17.580	220.364	142,29	5.831,29	164.013	51.192	22.834	238.040	3.638,86	155.735	33.860	15.663	205.258	
9	2003	2.230,01	176.627	76.917	31.266	284.810	5.920,02	163.110	49.661	20.802	233.573	146,07	5.863,87	163.903	52.265	61.366	277.534	3.662,94	155.866	36.162	53.068	245.097	
10	2003	2.205,11	177.727	80.167	32.874	290.768	5.847,90	164.015	52.317	21.852	238.184	146,21											
11	2003	2.192,43	177.753	79.959	34.736	292.449	5.831,29	164.013	51.192	22.834	238.040	146,00											
12	2003	2.200,93	177.278	79.066	75.175	331.518	5.863,87	163.903	52.265	61.366	277.534	145,47											

Dýralæknafélag Íslands

		<i>Karlar</i>					<i>Allir</i>					<i>Konur</i>					
MA	AR	STG	DL	YL	ÖL	HL	STG	DL	YL	ÖL	HL	Km.dl.	STG	DL	YL	ÖL	HL
1	2003						21,76	265.121	63.158	60.085	388.363	174,56					
2	2003						21,78	265.592	67.982	60.714	394.288	175,17					
3	2003						21,01	268.908	67.455	56.802	393.165	175,47					
4	2003						21,99	268.395	61.908	64.171	394.473	174,93					
5	2003						22,88	266.048	77.020	50.608	393.677	173,66					
6	2003						22,33	267.533	62.728	87.833	418.093	174,52					
7	2003						22,48	266.568	70.378	82.137	419.083	174,06					
8	2003						23,29	267.812	67.383	57.069	392.264	175,03					
9	2003						21,54	270.180	70.437	54.598	395.215	175,33					
10	2003						23,28	266.726	61.382	49.811	377.920	172,30					
11	2003						23,89	265.061	65.720	31.201	361.982	170,99					
12	2003						22,60	268.072	76.080	118.971	463.123	172,41					

Stéttarfélag bókasafns- og upplýsingafræðinga

		<i>Karlar</i>					<i>Allir</i>					<i>Konur</i>					
MA	AR	STG	DL	YL	ÖL	HL	STG	DL	YL	ÖL	HL	Km.dl.	STG	DL	YL	ÖL	HL
1	2003						73,99	235.623	26.198	1.128	262.948	167,64					
2	2003						74,44	235.983	27.742	3.124	266.850	168,18					
3	2003						74,51	235.571	25.700	3.709	264.980	166,11					
4	2003						75,59	237.161	28.760	10.702	276.623	167,03					
5	2003						75,02	237.725	26.585	548	264.858	167,68					
6	2003						78,22	237.366	25.745	295	263.407	167,32					
7	2003						74,40	237.085	28.477	476	266.038	167,28					
8	2003						74,20	237.054	20.790	797	258.641	167,41					
9	2003						76,07	239.167	29.819	979	269.966	167,72					
10	2003						77,36	239.283	26.070	585	265.938	167,03					
11	2003						78,79	238.959	27.096	426	266.481	166,57					
12	2003						77,69	239.019	29.860	37.298	306.177	166,12					

BHM, ríkisstarfsmenn

Félag fréttamanna												
		Konur										
MA	AR	STG	DL	YL	ÖL	HL	STG	DL	YL	ÖL	HL	
1	2003	43.97	211.422	127.542	28.383	367.348	59.88	212.311	120.598	31.127	364.036	151,09
2	2003	42.97	212.754	106.446	31.182	350.383	59,09	213.313	94.316	30.150	337.780	152,06
3	2003	41.48	214.729	112.321	25.470	352.519	57,60	214.749	102.724	26.299	343.772	151,46
4	2003	42.87	215.299	110.437	38.580	364.316	59,46	214.984	103.715	37.499	356.197	151,45
5	2003	43.56	208.694	185.547	20.538	414.779	61,31	209.183	185.636	20.721	415.541	147,58
6	2003	49.32	203.652	116.509	22.153	342.315	70,24	203.677	102.446	22.803	328.926	143,61
7	2003	51.43	203.867	70.669	15.353	289.889	75,33	202.444	68.051	17.499	287.994	142,88
8	2003	48.46	204.454	87.007	17.019	308.480	70,16	203.955	82.089	18.983	305.026	144,07
9	2003	46.34	208.237	83.684	22.978	314.899	64,34	208.988	78.096	23.247	310.332	146,59
10	2003	44.32	210.794	88.841	25.205	324.841	61,60	210.692	78.843	25.806	315.341	147,11
11	2003	44.98	208.147	80.275	25.938	314.360	61,46	209.363	76.659	26.537	312.559	145,98
12	2003	43.83	209.861	81.469	57.130	348.459	60,33	210.698	74.815	58.723	344.236	146,47

Félag háskólakennara												
		Konur										
MA	AR	STG	DL	YL	ÖL	HL	STG	DL	YL	ÖL	HL	
1	2003	247.09	241.742	77.232	3.756	322.730	500,00	231.455	63.708	2.467	297.630	127,18
2	2003	242.94	243.044	62.050	4.427	309.521	497,42	231.909	52.710	3.464	288.082	127,64
3	2003	244.15	242.687	66.309	2.947	311.943	502,22	231.616	55.091	2.333	289.040	126,13
4	2003	251.00	241.536	60.131	18.435	320.101	509,21	231.102	47.742	15.230	294.074	125,70
5	2003	249.78	241.668	56.132	8.471	306.270	506,58	231.388	49.937	6.925	288.249	126,05
6	2003	254.84	239.215	44.909	11.147	295.272	511,13	229.941	38.809	9.324	278.073	125,18
7	2003	256.97	237.216	43.202	3.513	283.931	517,76	228.541	34.152	3.032	265.725	124,54
8	2003	261.07	237.858	42.069	2.353	282.280	520,94	229.044	34.507	1.919	265.469	124,92
9	2003	254.43	242.408	59.146	196.010	497.563	510,20	232.527	52.341	165.921	450.790	125,93
10	2003	254.69	243.040	63.801	3.845	310.686	515,74	233.005	53.069	4.038	290.112	125,61
11	2003	257.13	243.288	64.188	4.045	311.521	514,73	233.112	57.990	3.166	294.269	125,50
12	2003	263.28	243.057	64.097	41.684	348.837	517,23	234.128	55.249	43.667	333.044	125,67

Félag háskólakennara á Akureyri

Kaupmáttur miðast við 05/1992 = 100,00

		<i>Karlar</i>					<i>Allir</i>						<i>Konur</i>				
MA	AR	STG	DL	YL	ÖL	HL	STG	DL	YL	ÖL	HL	Km.dl.	STG	DL	YL	ÖL	HL
1	2003	42,91	250.860	90.493	0	341.353	89,79	235.673	64.372	0	300.045	174,45	46,88	221.770	40.462	0	262.232
2	2003	43,55	249.370	81.717	0	331.087	91,14	235.823	60.007	79	295.909	174,86	47,59	223.424	40.139	151	263.714
3	2003	44,51	247.729	73.293	0	321.021	93,30	234.791	59.709	38	294.538	172,25	48,78	222.986	47.314	72	270.372
4	2003	44,48	247.793	99.172	9.989	356.954	93,19	234.867	66.871	9.400	311.138	172,10	48,71	223.062	37.371	8.861	269.294
5	2003	44,35	247.168	136.828	5.514	389.510	93,64	234.175	107.667	2.665	344.507	171,85	49,29	222.486	81.432	102	304.020
6	2003	43,63	248.637	82.020	2.431	333.089	89,56	235.875	69.873	2.918	308.666	172,99	45,93	223.752	58.334	3.381	285.468
7	2003	45,12	245.436	79.652	0	325.089	94,61	232.811	62.933	0	295.745	170,90	49,49	221.301	47.691	0	268.992
8	2003	47,64	241.458	136.095	0	377.553	100,85	230.275	104.260	0	334.534	169,19	53,21	220.262	75.756	0	296.018
9	2003	50,33	243.247	89.448	0	332.695	104,80	233.006	70.142	0	303.148	170,00	54,47	223.544	52.304	0	275.848
10	2003	50,72	245.514	82.231	804	328.549	102,92	234.317	64.263	396	298.976	170,17	52,20	223.438	46.806	0	270.243
11	2003	52,78	243.567	78.405	0	321.972	104,96	234.921	61.427	0	296.348	170,37	52,18	226.176	44.254	0	270.429
12	2003	52,79	243.476	95.623	30.469	369.569	105,18	234.942	73.285	32.767	340.993	169,88	52,39	226.342	50.775	35.082	312.200

Fél. háskólamenntaðra starfsmanna stjórnarráðs

		<i>Karlar</i>					<i>Allir</i>						<i>Konur</i>				
MA	AR	STG	DL	YL	ÖL	HL	STG	DL	YL	ÖL	HL	Km.dl.	STG	DL	YL	ÖL	HL
1	2003	140,76	262.244	61.186	10.545	333.975	315,58	254.833	57.565	6.318	318.716	157,27	174,82	248.867	54.650	2.914	306.431
2	2003	137,18	262.634	64.968	13.341	340.942	312,78	255.399	60.183	7.451	323.033	157,89	175,61	249.748	56.446	2.849	309.043
3	2003	134,81	262.504	63.851	15.249	341.604	312,03	255.037	60.343	8.263	323.643	155,99	177,22	249.357	57.674	2.949	309.981
4	2003	136,24	263.184	58.646	26.775	348.606	315,81	254.777	55.667	18.954	329.397	155,65	179,57	248.398	53.407	13.019	314.824
5	2003	140,23	263.298	59.815	15.022	338.136	324,27	254.255	57.005	8.256	319.515	155,56	184,04	247.364	54.864	3.100	305.327
6	2003	141,86	263.376	62.202	13.574	339.152	325,22	253.870	58.189	8.189	320.248	155,23	183,36	246.514	55.085	4.023	305.622
7	2003	139,59	262.025	59.226	11.432	332.683	322,61	253.749	55.805	6.898	316.452	155,30	183,02	247.437	53.196	3.440	304.072
8	2003	141,13	261.515	58.987	15.212	335.714	324,28	254.794	55.271	9.115	319.180	156,09	183,15	249.616	52.407	4.417	306.440
9	2003	140,90	261.471	60.856	8.031	330.358	324,61	255.594	57.182	5.977	318.754	155,47	183,71	251.087	54.365	4.402	309.854
10	2003	141,38	262.374	63.425	7.336	333.135	320,70	256.765	60.222	5.507	322.493	155,47	179,33	252.343	57.696	4.065	314.104
11	2003	142,68	262.099	62.918	4.983	329.999	325,64	255.922	58.836	4.388	319.146	154,75	182,96	251.105	55.652	3.924	310.681
12	2003	143,52	262.421	67.063	39.058	368.542	329,70	255.699	62.368	39.524	357.592	154,15	186,18	250.518	58.749	39.883	349.150

Félag íslenskra fræða

MA	AR	<i>Karlar</i>				
		STG	DL	YL	ÖL	HL
1	2003	19,37	233.490	45.411	520	279.420
2	2003	19,80	231.042	6.165	508	237.715
3	2003	20,15	235.486	22.842	500	258.827
4	2003	19,97	236.689	22.186	10.113	268.989
5	2003	20,61	234.043	28.504	1.557	264.104
6	2003	21,28	234.211	22.909	473	257.593
7	2003	21,33	233.322	18.800	472	252.594
8	2003	21,22	235.753	21.978	474	258.205
9	2003	17,91	242.338	17.575	562	260.476
10	2003	22,73	238.730	46.609	443	285.783
11	2003	21,59	239.184	52.694	466	292.345
12	2003	19,47	240.654	23.328	38.207	302.190

Félag íslenskra hjúkrunarfræðinga

MA	AR	<i>Karlar</i>				
		STG	DL	YL	ÖL	HL
1	2003	24,16	224.931	85.755	47.684	358.370
2	2003	24,99	225.316	87.471	44.490	357.277
3	2003	24,99	225.306	96.715	49.701	371.723
4	2003	24,65	225.841	112.803	64.616	403.260
5	2003	23,45	226.094	122.018	40.943	389.055
6	2003	23,15	227.010	97.730	40.434	365.174
7	2003	22,79	227.969	90.740	34.177	352.886
8	2003	22,43	228.345	112.518	43.287	384.150
9	2003	23,01	227.744	100.380	35.889	364.013
10	2003	22,78	228.594	120.371	55.396	404.361
11	2003	22,84	230.454	109.213	55.614	395.281
12	2003	23,72	227.030	87.530	107.115	421.674

<i>Allir</i>					
STG	DL	YL	ÖL	HL	Km.dl.
46,32	233.535	33.652	217	267.404	139,95
45,88	233.472	10.771	219	244.462	140,15
47,83	235.480	19.771	210	255.461	139,86
44,37	236.514	21.611	10.257	268.383	140,31
46,65	237.056	26.590	688	264.334	140,84
48,77	236.176	18.745	206	255.128	140,23
49,26	234.484	16.856	460	251.799	139,36
49,45	235.523	19.017	204	254.744	140,10
46,05	239.277	16.126	219	255.621	141,33
52,72	236.215	29.507	191	265.913	138,89
51,04	236.563	39.385	197	276.145	138,90
48,05	237.076	20.816	36.634	294.526	138,78

<i>Konur</i>				
STG	DL	YL	ÖL	HL
26,95	233.568	25.199	0	258.767
26,08	235.317	14.267	0	249.584
27,68	235.477	17.535	0	253.011
24,40	236.371	21.141	10.376	267.888
26,04	239.441	25.075	0	264.517
27,49	237.697	15.523	0	253.220
27,93	235.371	15.371	451	251.193
28,23	235.350	16.791	0	252.142
28,14	237.328	15.203	0	252.531
29,99	234.308	16.542	0	250.850
29,46	234.643	29.632	0	264.274
28,58	234.639	19.105	35.563	289.306

Félag íslenskra náttúrufræðinga

MA	AR	<i>Karlar</i>					<i>Allir</i>						<i>Konur</i>				
		STG	DL	YL	ÖL	HL	STG	DL	YL	ÖL	HL	Km.dl.	STG	DL	YL	ÖL	HL
1	2003	350,04	261.742	32.732	4.041	298.515	573,15	254.585	29.003	4.177	287.765	163,99	223,11	243.357	23.153	4.389	270.900
2	2003	351,62	263.298	39.554	16.154	319.005	583,57	254.574	33.721	14.076	302.371	164,26	231,96	241.350	24.879	10.927	277.156
3	2003	353,10	263.205	53.787	24.525	341.516	582,36	254.942	47.368	20.081	322.391	162,75	229,27	242.217	37.481	13.236	292.935
4	2003	354,31	263.918	59.575	16.599	340.092	585,96	255.085	50.515	16.431	322.031	162,65	231,64	241.575	36.657	16.173	294.404
5	2003	364,36	262.332	60.277	5.683	328.292	602,31	253.799	52.908	5.891	312.598	162,07	237,95	240.732	41.624	6.211	288.567
6	2003	371,67	260.531	57.065	6.498	324.094	620,73	251.001	47.581	6.070	304.652	160,19	249,06	236.779	33.428	5.432	275.639
7	2003	364,44	260.431	48.672	5.141	314.243	620,46	250.372	40.107	5.269	295.748	159,94	256,02	236.054	27.915	5.451	269.420
8	2003	364,91	261.548	51.985	5.932	319.466	619,91	251.574	44.158	5.951	301.683	160,85	255,01	237.300	32.956	5.979	276.236
9	2003	355,82	264.328	65.868	6.440	336.637	585,71	256.088	55.724	7.114	318.926	162,58	229,90	243.333	40.023	8.158	291.514
10	2003	355,84	264.292	72.664	5.146	342.101	587,69	256.885	60.954	6.845	324.684	162,34	231,85	245.516	42.982	9.453	297.952
11	2003	350,78	265.252	57.608	5.659	328.519	579,06	257.331	48.819	6.052	312.202	162,40	228,27	245.158	35.313	6.657	287.128
12	2003	355,26	265.663	56.129	45.802	367.594	586,31	257.200	47.520	46.980	351.700	161,83	231,04	244.186	34.284	48.792	327.262

Stéttarfélag sjúkráþjálfra

MA	AR	<i>Karlar</i>					<i>Allir</i>						<i>Konur</i>				
		STG	DL	YL	ÖL	HL	STG	DL	YL	ÖL	HL	Km.dl.	STG	DL	YL	ÖL	HL
1	2003						50,11	245.719	25.539	7.003	278.261	149,69					
2	2003						49,73	245.398	25.278	7.336	278.012	149,75					
3	2003						48,86	247.452	27.836	7.898	283.187	149,40					
4	2003						50,93	249.524	29.488	18.079	297.092	150,47					
5	2003						50,10	250.520	28.771	9.018	288.309	151,30					
6	2003						52,16	250.422	21.000	6.188	277.610	151,14					
7	2003						48,90	247.331	19.499	3.723	270.554	149,42					
8	2003						51,56	247.468	22.835	4.868	275.171	149,64					
9	2003						49,51	250.042	23.436	3.228	276.706	150,13					
10	2003						47,23	252.085	28.194	3.737	284.016	150,67					
11	2003						49,01	252.041	27.042	2.856	281.939	150,43					
12	2003						48,85	253.406	28.806	44.972	327.184	150,79					

Félag tækniskólakennara

MA	AR	<i>Karlar</i>					ÖL	HL
		STG	DL	YL	ÖL	HL		
1	2003	29,23	268.028	110.114	-24	378.118		
2	2003	27,49	265.349	96.106	0	361.455		
3	2003	27,43	265.455	79.130	0	344.585		
4	2003	28,10	267.596	69.690	9.697	346.983		
5	2003	28,43	269.071	91.908	717	361.696		
6	2003	27,14	265.626	-276	0	265.350		
7	2003	27,93	263.390	4.716	0	268.106		
8	2003	30,23	265.622	3.266	0	268.889		
9	2003	28,16	259.313	35.484	0	294.797		
10	2003	29,23	257.846	35.661	0	293.507		
11	2003	29,23	257.846	40.423	0	298.269		
12	2003	31,06	256.865	33.908	32.573	323.346		

Félag íslenskra. félagsvísindamanna

MA	AR	<i>Karlar</i>					ÖL	HL
		STG	DL	YL	ÖL	HL		
1	2003	16,80	251.789	44.099	6.368	302.255		
2	2003	16,80	249.863	70.888	6.368	327.118		
3	2003	18,92	256.065	56.357	5.975	318.396		
4	2003	19,00	256.628	55.953	14.943	327.525		
5	2003	19,11	257.336	55.099	5.599	318.033		
6	2003	18,63	259.387	55.782	5.742	320.911		
7	2003	17,86	261.704	69.094	6.494	337.292		
8	2003	19,15	261.532	59.062	5.587	326.182		
9	2003	20,64	260.194	45.198	5.184	310.576		
10	2003	18,97	262.594	47.551	4.844	314.989		
11	2003	18,94	262.861	54.970	4.852	322.683		
12	2003	18,95	264.547	44.595	40.955	350.097		

<i>Allir</i>							Km.dl.
STG	DL	YL	ÖL	HL	ÖL	HL	
51,41	258.867	98.437	-14	357.291	174,01		
47,65	259.366	84.041	0	343.407	174,64		
46,45	258.199	77.087	0	335.286	172,02		
47,12	260.487	69.498	9.900	339.885	173,34		
47,45	261.420	103.900	629	365.949	174,22		
46,94	258.830	8.733	0	267.563	172,38		
46,14	259.558	13.807	0	273.365	173,03		
51,59	257.197	32.626	0	289.823	171,61		
51,42	250.094	44.368	0	294.462	165,70		
52,49	249.464	43.285	0	292.749	164,53		
53,49	248.294	45.313	0	293.608	163,53		
53,14	250.546	41.815	33.247	325.608	164,52		

<i>Allir</i>							Km.dl.
STG	DL	YL	ÖL	HL	ÖL	HL	
47,78	250.837	39.119	9.833	299.790	169,46		
47,46	250.286	51.376	8.726	310.388	169,37		
47,50	254.626	49.469	9.082	313.176	170,48		
46,82	256.067	49.502	17.892	323.460	171,25		
47,13	256.378	47.580	11.582	315.541	171,71		
46,78	256.534	52.086	8.647	317.267	171,71		
44,56	258.227	54.616	7.396	320.239	173,00		
46,05	257.888	45.993	9.682	313.563	172,93		
46,37	258.297	49.135	7.266	314.698	171,99		
45,15	260.957	46.085	7.707	314.749	172,97		
43,44	262.016	49.661	6.555	318.232	173,43		
45,31	261.289	46.294	47.408	354.991	172,43		

<i>Konur</i>					ÖL	HL
STG	DL	YL	ÖL	HL		
22,18	246.794	83.049	0	329.844		
20,16	251.207	67.590	0	318.797		
19,02	247.734	74.140	0	321.874		
19,02	249.985	69.215	10.200	329.400		
19,02	249.985	121.823	498	372.306		
19,80	249.514	21.082	0	270.596		
18,21	253.682	27.750	0	281.432		
21,36	245.273	74.177	0	319.451		
23,26	238.932	55.125	0	294.057		
23,26	238.932	52.865	0	291.797		
24,26	236.786	51.205	0	287.991		
22,08	241.658	52.939	34.195	328.791		

BHM, ríkisstarfsmenn

Júní 2004

Kjarafélag iðjubjálfa

		Kjarlar						Konur								
MA	AR	STG	DL	YL	ÖL	HL	STG	DL	YL	ÖL	HL	STG	DL	YL	ÖL	HL
1	2003						40,22	256.009	14.144	171	270.324	150,70				
2	2003						38,65	259.732	17.882	187	274.852	153,15				
3	2003						38,65	259.732	17.882	178	277.793	151,53				
4	2003						38,65	260.444	16.346	10,640	287.429	151,77				
5	2003						41,21	257.489	16.326	133	273.948	150,27				
6	2003						45,18	253.743	12,043	2,850	268.636	147,99				
7	2003						47,36	250.515	13,735	26	264.277	146,25				
8	2003						48,13	254.684	7,955	230	262.869	148,81				
9	2003						48,64	255.478	7,200	130	262.808	148,23				
10	2003						46,57	255.399	7,858	109	263.366	147,50				
11	2003						48,34	254.496	8,935	105	263.536	146,78				
12	2003						47,17	255.436	7,809	37,690	300.935	146,88				

Kennarafélag KHÍ

		Kjarlar						Konur								
MA	AR	STG	DL	YL	ÖL	HL	STG	DL	YL	ÖL	HL	STG	DL	YL	ÖL	HL
1	2003	43,23	238.656	108.416	66	347.138	116,57	228.808	89.354	24	318.186	139,45				
2	2003	42,78	239.191	106.538	118	345.847	113,71	228.938	92.975	313	322.227	139,77				
3	2003	40,78	239.266	109.108	3,132	351.506	111,71	228.843	90.798	2,529	322.171	138,23				
4	2003	42,31	238.972	111.001	10,045	360.017	113,24	228.874	97.357	9,915	336.146	138,08				
5	2003	43,06	239.592	127.817	789	368.198	115,12	228.935	106.918	295	336.148	138,33				
6	2003	42,14	239.656	145.598	2,394	387.649	110,11	229.149	139.294	2,097	370.539	138,37				
7	2003	41,83	239.536	133.342	0	372.879	109,84	228.894	113.842	0	342.737	138,35				
8	2003	47,41	235.887	123.556	703	360.146	118,94	228.838	106.149	573	333.560	137,23				
9	2003	58,20	231.133	86.228	572	317.934	140,69	224.142	76.998	237	301.378	134,64				
10	2003	50,70	237.863	106.306	2,159	346.328	126,70	228.909	92.629	2,010	323.548	136,88				
11	2003	48,20	241.083	101.703	691	343.477	124,35	230.401	87.695	308	318.404	137,58				
12	2003	48,79	242.018	101.794	33,085	376.897	125,17	229.747	92.177	33,748	355.673	136,78				

Kjarafélag viðskipta- og hagfræðinga

MA	AR	<i>Karlar</i>				
		STG	DL	YL	ÖL	HL
1	2003	146,28	263.896	90.030	540	354.466
2	2003	149,76	264.613	97.623	1.018	363.254
3	2003	153,02	265.200	91.980	697	357.877
4	2003	153,58	266.905	89.867	10.730	367.502
5	2003	157,07	267.714	86.740	1.438	355.893
6	2003	155,96	266.976	90.280	1.508	358.764
7	2003	156,63	267.487	84.365	1.142	352.994
8	2003	159,69	267.810	80.758	894	349.462
9	2003	157,32	267.664	100.163	1.103	368.931
10	2003	159,21	267.518	94.570	640	362.728
11	2003	161,75	267.307	93.694	2.341	363.341
12	2003	164,07	267.544	93.495	38.016	399.056

Ljósmeðrafélag Íslands*Kaupmáttur miðast við 01/2000 = 100,00*

MA	AR	<i>Karlar</i>				
		STG	DL	YL	ÖL	HL
1	2003					
2	2003					
3	2003					
4	2003					
5	2003					
6	2003					
7	2003					
8	2003					
9	2003					
10	2003					
11	2003					
12	2003					

<i>Allir</i>						
STG	DL	YL	ÖL	HL	Km.dl.	
250,41	258.212	89.853	414	348.479	152,88	
253,03	258.780	95.245	681	354.707	153,48	
257,49	260.131	90.583	540	351.254	152,64	
257,44	261.461	90.152	10.536	362.149	153,24	
263,80	262.324	86.911	1.395	350.631	153,98	
260,34	261.871	90.457	1.246	353.575	153,61	
264,33	262.399	85.272	677	348.348	154,07	
268,54	263.050	82.436	532	346.017	154,59	
268,15	262.926	97.237	764	360.927	153,43	
266,55	263.754	93.269	543	357.565	153,21	
271,41	263.676	91.372	1.437	356.485	152,95	
276,05	262.809	92.882	37.558	393.248	152,00	

<i>Konur</i>					
STG	DL	YL	ÖL	HL	
104,13	250.226	89.605	238	340.069	
103,27	250.322	91.796	194	342.311	
104,47	252.708	88.537	310	341.555	
103,86	253.411	90.572	10.249	354.232	
106,73	254.391	87.163	1.332	342.887	
104,38	254.244	90.721	855	345.820	
107,70	255.001	86.592	0	341.593	
108,85	256.067	84.897	0	340.963	
110,83	256.199	93.083	284	349.565	
107,34	258.171	91.339	399	349.908	
109,66	258.321	87.948	103	346.372	
111,98	255.871	91.982	36.885	384.738	

Stéttarfélag háskólum á matvæla- og næringarviði

		<i>Karlar</i>					<i>Allir</i>						<i>Konur</i>				
MA	AR	STG	DL	YL	ÖL	HL	STG	DL	YL	ÖL	HL	Km.dl.	STG	DL	YL	ÖL	HL
1	2003	20,56	258.409	51.374	5.085	314.867	54,86	253.634	33.440	3.411	290.485	187,62	34,30	250.772	22.691	2.408	275.871
2	2003	20,06	257.291	39.496	5.212	301.999	54,24	253.253	28.730	3.148	285.131	187,65	34,18	250.883	22.412	1.936	275.232
3	2003	20,45	261.333	46.217	5.112	312.661	54,20	255.138	32.318	3.087	290.543	187,05	33,75	251.384	23.898	1.861	277.142
4	2003	18,67	261.590	40.476	16.403	318.468	51,61	255.094	30.247	14.189	299.530	186,79	32,94	251.413	24.450	12.934	288.796
5	2003	19,56	261.784	37.958	5.345	305.086	51,58	256.150	28.328	4.523	289.001	187,85	32,02	252.709	22.448	4.020	279.177
6	2003	19,22	262.874	34.098	4.046	301.017	51,31	255.734	31.359	2.651	289.744	187,42	32,10	251.459	29.718	1.816	282.993
7	2003	18,96	263.811	41.110	2.987	307.908	52,68	254.752	28.605	5.026	288.384	186,88	33,73	249.660	21.576	6.172	277.408
8	2003	19,68	264.508	30.811	5.200	300.519	49,45	259.135	25.655	3.652	288.442	190,27	29,77	255.584	22.247	2.629	280.460
9	2003	17,96	266.512	34.020	3.154	303.686	47,66	259.536	29.698	2.995	292.229	189,22	29,70	255.318	27.085	2.899	285.302
10	2003	18,37	266.033	44.325	3.083	313.441	48,61	259.500	36.688	2.938	299.126	188,33	30,24	255.532	32.049	2.851	290.432
11	2003	19,52	262.102	47.871	2.902	312.875	50,91	260.194	38.696	2.855	301.745	188,57	31,39	259.008	32.991	2.826	294.825
12	2003	19,52	263.540	54.971	51.132	369.642	50,36	262.317	35.586	49.636	347.539	189,54	30,84	261.544	23.318	48.690	333.553

Meinataeknafélag Íslands *Kaupmáttur miðast við 04/1989 = 100,00*

		<i>Karlar</i>					<i>Allir</i>						<i>Konur</i>				
MA	AR	STG	DL	YL	ÖL	HL	STG	DL	YL	ÖL	HL	Km.dl.	STG	DL	YL	ÖL	HL
1	2003						154,22	200.664	83.768	25.878	310.310	157,64					
2	2003						157,51	200.511	73.700	21.894	296.105	157,78					
3	2003						155,52	201.088	83.978	24.759	309.826	156,56					
4	2003						155,17	201.210	89.481	37.196	327.888	156,47					
5	2003						157,38	201.225	88.963	24.713	314.901	156,71					
6	2003						156,16	200.864	90.361	26.895	318.121	156,33					
7	2003						158,76	200.896	81.668	23.059	305.623	156,51					
8	2003						157,33	200.710	87.773	23.998	312.481	156,50					
9	2003						157,00	200.108	85.147	25.194	310.448	154,94					
10	2003						167,95	196.765	82.553	23.765	303.083	151,65					
11	2003						159,53	199.934	94.993	19.333	314.260	153,88					
12	2003						161,30	200.956	95.949	57.089	353.994	154,20					

Félag íslenskra geislafræðinga

Kaupmáttur miðast við 01/1992 = 100,00

		<i>Karlar</i>					<i>Allir</i>					<i>Konur</i>					
MA	AR	STG	DL	YL	ÖL	HL	STG	DL	YL	ÖL	HL	Km.dl.	STG	DL	YL	ÖL	HL
1	2003						47,80	196.134	79.043	20.846	296.024	181,33					
2	2003						49,40	197.436	67.149	15.606	280.191	182,84					
3	2003						48,90	197.618	71.773	18.090	287.481	181,07					
4	2003						48,84	197.568	81.615	28.894	308.078	180,81					
5	2003						50,29	198.293	82.287	15.927	296.508	181,75					
6	2003						49,05	197.673	86.322	16.312	300.307	181,06					
7	2003						50,35	199.370	86.696	15.670	301.736	182,79					
8	2003						51,40	200.707	82.990	17.236	300.932	184,18					
9	2003						50,66	199.871	68.733	18.877	287.481	182,13					
10	2003						48,78	201.182	79.041	18.585	298.808	182,48					
11	2003						46,79	202.745	86.805	19.120	308.670	183,64					
12	2003						47,01	202.624	88.904	59.276	350.804	182,99					

Stéttarfélag sálfræðinga á Íslandi

		<i>Karlar</i>					<i>Allir</i>					<i>Konur</i>					
MA	AR	STG	DL	YL	ÖL	HL	STG	DL	YL	ÖL	HL	Km.dl.	STG	DL	YL	ÖL	HL
1	2003	17,99	301.368	25.828	0	327.196	51,02	286.704	19.542	3.231	309.476	175,27	33,03	278.715	16.117	4.991	299.823
2	2003	18,57	299.973	20.312	1.646	321.931	51,26	286.920	16.170	4.406	307.496	175,70	32,69	279.504	13.818	5.974	299.296
3	2003	19,38	298.398	23.309	38.946	360.653	51,82	287.770	17.339	20.462	325.571	174,35	32,44	281.421	13.772	9.420	304.613
4	2003	19,20	298.284	18.829	9.954	327.067	51,96	287.438	14.321	14.491	316.250	173,94	32,76	281.081	11.679	17.149	309.910
5	2003	19,80	295.191	19.189	4.957	319.337	53,40	285.710	20.050	10.212	315.972	173,16	33,60	280.124	20.557	13.308	313.989
6	2003	19,20	299.729	19.832	26.528	346.089	52,63	288.604	15.026	21.914	325.545	174,80	33,43	282.215	12.266	19.264	313.746
7	2003	19,21	303.566	19.191	0	322.757	52,50	291.674	13.223	1.522	306.418	176,83	33,29	284.812	9.779	2.399	296.990
8	2003	20,26	297.795	17.561	6.741	322.097	54,77	289.036	12.932	3.041	305.009	175,39	34,51	283.894	10.214	869	294.978
9	2003	21,60	298.630	16.031	13.818	328.479	55,01	289.129	14.514	8.174	311.818	174,21	33,41	282.986	13.534	4.525	301.046
10	2003	20,60	300.955	20.869	2.907	324.732	55,28	288.575	18.328	6.464	313.366	173,08	34,68	281.221	16.818	8.576	306.615
11	2003	20,60	300.955	23.269	2.945	327.169	54,70	289.373	17.536	6.645	313.553	173,32	34,10	282.376	14.073	8.880	305.328
12	2003	23,16	301.509	19.209	41.962	362.681	56,67	290.644	15.598	46.598	352.839	173,56	33,51	283.133	13.101	49.803	346.037

Stéttarfélag íslenskra félagsráðgjafa

MA	AR	<i>Karlar</i>					HL
		STG	DL	YL	ÖL	HL	
1	2003						
2	2003						
3	2003						
4	2003						
5	2003						
6	2003						
7	2003						
8	2003						
9	2003						
10	2003						
11	2003						
12	2003						

<i>Allir</i>						Km.dl.
STG	DL	YL	ÖL	HL	HL	
60,22	229.247	33.214	6.041	268.502	162,95	
59,70	231.197	40.586	5.647	277.431	164,61	
61,58	232.257	39.083	5.731	277.071	163,61	
61,73	231.282	37.085	15.091	283.458	162,73	
63,98	232.709	35.216	5.861	273.786	163,98	
62,38	233.097	35.886	6.774	275.757	164,15	
62,10	233.634	26.963	5.140	265.738	164,69	
62,56	233.206	34.458	6.792	274.456	164,53	
64,28	245.816	25.918	5.761	277.495	172,21	
63,82	245.698	26.239	4.957	276.895	171,34	
63,86	245.953	23.129	6.467	275.549	171,28	
64,94	246.412	21.097	43.621	311.130	171,09	

<i>Konur</i>				
STG	DL	YL	ÖL	HL

Stéttarfélag lögfræðinga

MA	AR	<i>Karlar</i>					HL
		STG	DL	YL	ÖL	HL	
1	2003	111,14	247.317	88.732	20.836	356.886	
2	2003	112,41	247.572	95.173	16.984	359.729	
3	2003	116,52	245.882	91.099	12.960	349.941	
4	2003	115,15	248.969	93.660	22.767	365.396	
5	2003	117,84	249.096	101.119	19.513	369.728	
6	2003	111,95	250.296	101.877	27.433	379.606	
7	2003	110,25	250.906	91.311	15.011	357.227	
8	2003	115,74	250.119	84.307	17.035	351.461	
9	2003	111,73	254.799	92.399	15.999	363.197	
10	2003	107,87	253.645	94.933	16.685	365.262	
11	2003	109,78	252.659	89.013	16.597	358.269	
12	2003	108,96	253.005	97.623	61.960	412.587	

<i>Allir</i>						Km.dl.
STG	DL	YL	ÖL	HL	HL	
224,26	242.291	80.314	18.331	340.935	149,31	
223,86	243.279	87.185	13.221	343.685	150,18	
229,79	242.123	85.073	12.198	339.394	147,88	
230,39	243.700	85.972	22.802	352.474	148,66	
236,79	243.417	93.918	17.857	355.192	148,71	
231,55	244.983	94.626	20.898	360.507	149,58	
230,22	244.420	83.720	14.149	342.289	149,37	
235,43	243.618	79.423	14.161	337.202	149,02	
232,28	246.924	83.520	13.190	343.634	149,98	
227,16	247.037	86.938	13.362	347.337	149,36	
226,62	246.759	84.413	13.615	344.787	148,99	
228,07	247.112	92.555	55.315	394.983	148,75	

<i>Konur</i>				
STG	DL	YL	ÖL	HL
113,12	237.352	72.043	15.869	325.264
111,45	238.949	79.127	9.426	327.502
113,27	238.255	78.874	11.415	328.544
115,24	238.435	78.290	22.838	339.562
118,96	237.791	86.784	16.217	340.792
119,60	240.010	87.838	14.782	342.629
119,97	238.460	76.744	13.357	328.561
119,69	237.332	74.699	11.382	323.413
120,55	239.626	75.291	10.587	325.504
119,28	241.061	79.708	10.357	331.126
116,83	241.214	80.091	10.813	332.119
119,11	241.723	87.919	49.238	378.879

Útgarður, félag háskólamanna

MA	AR	<i>Karlar</i>					<i>Allir</i>						<i>Konur</i>				
		STG	DL	YL	ÖL	HL	STG	DL	YL	ÖL	HL	Km.dl.	STG	DL	YL	ÖL	HL
1	2003	138,05	228.282	75.634	15.159	319.075	302,59	222.402	57.702	9.154	289.258	150,34	164,54	217.469	42.657	4.116	264.242
2	2003	140,61	229.130	79.524	14.904	323.558	306,99	222.940	59.773	8.765	291.478	150,96	166,38	217.709	43.081	3.576	264.366
3	2003	140,22	229.969	75.432	13.556	318.956	312,57	223.398	57.163	7.960	288.521	149,67	172,36	218.053	42.301	3.408	263.762
4	2003	139,22	230.363	78.695	22.481	331.539	316,89	224.414	58.047	16.519	298.980	150,17	177,67	219.752	41.868	11.848	273.467
5	2003	140,20	231.046	83.977	11.795	326.819	315,02	224.689	61.044	6.572	292.305	150,58	174,82	219.590	42.652	2.384	264.626
6	2003	147,44	229.712	79.176	13.422	322.310	329,90	223.546	57.428	7.969	288.944	149,72	182,46	218.564	39.855	3.563	261.982
7	2003	143,60	231.264	67.113	11.489	309.866	325,48	224.189	50.553	7.165	281.907	150,29	181,89	218.602	37.480	3.751	259.833
8	2003	142,01	232.557	65.066	10.855	308.478	319,76	225.013	50.519	6.008	281.539	150,98	177,75	218.986	38.896	2.135	260.016
9	2003	140,60	232.099	77.005	10.730	319.834	321,87	225.234	55.735	5.685	286.654	150,07	181,28	219.910	39.238	1.772	260.920
10	2003	143,67	231.852	79.493	11.506	322.850	324,24	226.091	58.685	6.997	291.774	149,95	180,56	221.508	42.128	3.410	267.046
11	2003	145,15	231.920	76.718	12.612	321.249	323,79	226.469	58.961	7.664	293.094	149,99	178,64	222.040	44.534	3.644	270.218
12	2003	141,94	233.686	77.984	49.479	361.149	319,41	227.698	58.172	45.471	331.341	150,36	177,47	222.909	42.326	42.266	307.502

Proskapjálfafélag Íslands

Kaupmáttur miðast við 07-12/1997 = 100,00

MA	AR	<i>Karlar</i>					<i>Allir</i>						<i>Konur</i>				
		STG	DL	YL	ÖL	HL	STG	DL	YL	ÖL	HL	Km.dl.	STG	DL	YL	ÖL	HL
1	2003						134,64	189.776	64.772	20.003	274.551	128,29					
2	2003						131,63	190.562	46.798	24.370	261.730	129,04					
3	2003						132,71	190.647	40.070	21.900	252.618	127,73					
4	2003						132,52	191.423	43.453	32.010	266.886	128,10					
5	2003						136,15	190.939	95.273	19.652	305.864	127,96					
6	2003						140,14	192.448	58.172	22.541	273.161	128,89					
7	2003						140,18	191.898	42.117	17.596	251.611	128,65					
8	2003						142,01	191.606	44.018	19.109	254.733	128,57					
9	2003						139,02	192.006	44.872	21.480	258.358	127,93					
10	2003						138,14	192.653	47.142	23.150	262.945	127,77					
11	2003						145,62	192.099	46.147	22.887	261.134	127,23					
12	2003						138,80	192.801	50.848	62.244	305.893	127,31					

BHM, ríkisstarfsmenn

Júní 2004

BHM félögin hjá ríkinu, alls

MA	AR	Kerlar				Allir				Konur							
		STG	DL	YL	ÖL	HL	STG	DL	YL	ÖL	HL	STG	DL	YL	ÖL	HL	
1	2003	1.434,84	250,674	68.112	8.672	327.458	4.425,58	232.727	61.841	15.779	310.348	153,00	2.990,74	224.117	58.833	19.189	302.139
2	2003	1.434,73	251,408	67.359	11.826	330.593	4.442,34	233.111	58.088	15.987	307.187	153,51	3.007,63	224.384	53.665	17.972	296.021
3	2003	1.443,75	251,602	70.187	13.882	335.670	4.462,86	233.379	61.798	17.820	312.998	152,06	3.019,12	224.665	57.787	19.704	302.155
4	2003	1.450,66	252,133	71.096	20.076	343.305	4.487,65	233.978	70.362	25.696	330.036	152,27	3.036,97	225.306	70.012	28.380	323.698
5	2003	1.475,63	251,861	76.531	9.915	338.307	4.534,16	234.048	71.308	16.183	321.539	152,54	3.058,54	225.455	68.788	19.207	313.450
6	2003	1.493,09	250,494	67.913	11.614	330.021	4.606,99	233.147	63.661	16.237	313.044	151,86	3.113,90	224.829	61.621	18.453	304.904
7	2003	1.484,32	250,081	60.930	7.897	318.908	4.618,80	232.898	53.885	12.976	299.759	151,84	3.134,51	224.761	50.549	15.381	290.690
8	2003	1.509,41	250,478	62.535	8.265	321.278	4.632,54	233.473	57.163	13.865	304.501	152,36	3.123,14	225.255	54.567	16.571	296.393
9	2003	1.490,02	252,233	70.622	40.740	363.595	4.608,53	234.745	60.491	32.864	328.099	152,11	3.118,53	226.389	55.650	29.100	311.140
10	2003	1.486,10	252,765	74.251	7.841	334.857	4.608,85	235.022	61.720	15.552	312.293	151,59	3.122,74	226.578	55.757	19.221	301.556
11	2003	1.492,25	252,789	69.607	7.750	330.146	4.600,36	235.420	60.580	15.255	311.255	151,64	3.108,10	227.081	56.246	18.858	302.185
12	2003	1.505,05	253,338	70.549	46.010	369.897	4.618,22	235.995	63.734	53.558	353.287	151,55	3.113,16	227.611	60.440	57.204	345.254

3.3 Kennarasamband Íslands, ríkisstarfsmenn

Kennarasamband Íslands, ríkisstarfsmenn

MA	AR	Kartar					Allir					Konur					
		STG	DL	YL	ÖL	HL	STG	DL	YL	ÖL	HL	STG	DL	YL	ÖL	HL	
1	2003	700,49	232.623	103.750	163	336.536	1.338,39	229.877	80.459	219	310.555	164,22	637,89	226.860	54.883	279	282.023
2	2003	692,68	233.082	123.066	262	356.410	1.313,13	230.354	98.791	304	329.449	164,84	620,45	227.308	71.689	351	299.348
3	2003	691,98	233.319	124.900	389	358.608	1.310,35	230.477	101.360	420	332.257	163,18	618,37	227.297	75.017	454	302.768
4	2003	693,19	233.373	124.454	10.266	368.093	1.312,50	230.502	102.100	10.358	342.959	163,01	619,31	227.287	77.079	10.461	314.827
5	2003	694,54	233.582	100.517	534	334.633	1.317,00	230.787	86.452	481	317.721	163,45	622,47	227.668	70.759	423	298.850
6	2003	691,66	233.618	32.960	137	266.715	1.311,58	230.958	30.121	257	261.336	163,47	619,93	227.990	26.953	390	255.334
7	2003	688,48	234.375	11.306	428	246.110	1.293,22	231.661	8.614	258	240.534	164,12	604,74	228.572	5.548	65	234.185
8	2003	678,37	234.544	33.892	1	268.438	1.310,83	231.785	26.480	77	258.342	164,36	632,46	228.826	18.530	158	247.514
9	2003	675,78	233.959	163.587	591	398.137	1.305,13	231.449	130.125	424	361.998	162,97	629,35	228.753	94.194	245	323.192
10	2003	673,25	233.876	118.758	759	353.394	1.300,71	231.447	99.868	733	332.048	162,22	627,46	228.841	79.599	705	309.145
11	2003	673,34	233.850	124.303	299	358.453	1.299,18	231.504	103.208	362	335.075	162,04	625,84	228.980	80.512	430	309.922
12	2003	674,81	233.971	132.267	37.623	403.861	1.300,71	231.662	108.657	37.513	377.831	161,66	625,90	229.173	83.201	37.394	349.768

Félag íslenskra flugumferðarstjóra

		<i>Karlar</i>						<i>Allir</i>						<i>Konur</i>				
MA	AR	STG	DL	YL	ÖL	HL	STG	DL	YL	ÖL	HL	Km.dl.	STG	DL	YL	ÖL	HL	
1	2003	88,56	339.071	128.985	151.535	619.591	112,21	322.457	116.325	144.395	583.178	236,02	23,65	260.247	68.921	117.664	446.832	
2	2003	79,12	336.582	132.252	156.992	625.825	103,77	319.671	121.963	149.160	590.794	234,38	24,65	265.394	88.940	124.025	478.358	
3	2003	80,41	336.253	139.421	156.099	631.773	105,06	319.627	122.878	148.145	590.649	231,86	24,65	265.394	68.917	122.198	456.509	
4	2003	79,74	334.503	139.469	168.725	642.696	103,60	318.871	129.016	160.278	608.165	231,04	23,86	266.628	94.084	132.050	492.762	
5	2003	79,27	335.016	164.077	161.130	660.223	101,92	320.068	150.026	151.775	621.870	232,26	22,65	267.756	100.850	119.035	487.641	
6	2003	82,70	330.880	163.310	158.047	652.237	107,31	315.532	145.881	147.577	608.990	228,82	24,61	263.955	87.311	112.395	463.661	
7	2003	78,55	332.891	133.180	154.454	620.525	104,20	316.126	118.930	144.453	579.509	229,47	25,65	264.784	75.292	113.827	453.903	
8	2003	81,90	332.372	152.081	157.078	641.531	107,49	316.313	137.496	148.473	602.282	229,81	25,59	264.918	90.818	120.931	476.668	
9	2003	83,21	332.110	139.786	156.022	627.918	108,60	316.394	123.216	147.622	587.231	228,26	25,39	264.888	68.910	120.092	453.890	
10	2003	83,47	332.236	134.190	155.094	621.519	109,74	316.645	113.627	146.480	576.752	227,39	26,27	267.099	48.281	119.107	434.487	
11	2003	84,00	332.081	115.284	153.190	600.554	110,27	316.676	97.901	144.658	559.235	227,10	26,27	267.411	42.311	117.371	427.093	
12	2003	84,23	334.246	103.359	197.896	635.501	109,37	319.084	89.857	189.380	598.321	228,14	25,14	268.276	44.611	160.841	473.729	

Kjarafélag Tæknifræðingafélags Íslands

		<i>Karlar</i>					<i>Allir</i>						<i>Konur</i>				
MA	AR	STG	DL	YL	ÖL	HL	STG	DL	YL	ÖL	HL	Km.dl.	STG	DL	YL	ÖL	HL
1	2003						127,71	259.788	101.135	14.434	375.356	157,40					
2	2003						131,29	260.808	107.581	11.064	379.453	158,29					
3	2003						131,90	260.799	102.258	16.948	380.005	156,60					
4	2003						134,92	261.156	104.659	25.662	391.476	156,63					
5	2003						133,55	261.372	97.656	16.965	375.994	157,00					
6	2003						132,50	262.901	109.382	12.172	384.455	157,82					
7	2003						132,75	263.675	107.453	12.967	384.094	158,43					
8	2003						131,73	263.600	101.059	12.510	377.169	158,53					
9	2003						132,89	263.727	116.407	9.765	389.898	157,49					
10	2003						132,90	264.529	110.137	13.442	388.107	157,25					
11	2003						130,79	263.869	111.184	16.311	391.364	156,64					
12	2003						131,27	264.359	105.929	72.315	442.603	156,46					

Leikarafélag Íslands

Kaupmáttur miðast við meðaltal ársins 1997 = 100,00

Karlar

MA	AR	STG	DL	YL	ÖL	HL
1	2003	26,16	244.815	22.438	8.492	275.746
2	2003	26,16	244.121	16.638	8.876	269.635
3	2003	26,36	264.630	16.695	9.134	290.459
4	2003	25,25	224.768	22.792	13.698	261.258
5	2003	24,75	224.417	12.504	4.619	241.541
6	2003	25,04	204.680	8.648	1.884	215.212
7	2003	18,00	207.094	0	0	207.094
8	2003	19,61	202.774	0	0	202.774
9	2003	25,10	214.248	30.278	5.616	250.142
10	2003	25,10	257.239	39.863	9.394	306.495
11	2003	24,99	297.530	40.286	14.661	352.476
12	2003	21,67	210.390	19.753	43.313	273.455

Allir

STG	DL	YL	ÖL	HL	Km.dl.
51,25	232.128	17.052	6.731	255.911	138,50
50,23	235.875	13.784	7.875	257.534	140,97
48,82	256.206	16.227	8.710	281.142	151,50
49,16	219.286	16.078	13.326	248.690	129,52
48,32	219.755	10.671	4.590	235.017	129,99
46,96	204.936	6.641	2.523	214.100	121,15
37,00	205.555	795	109	206.459	121,63
38,41	203.020	766	0	203.786	120,24
46,65	208.425	21.459	5.054	234.938	122,57
46,08	244.867	27.479	8.196	280.543	143,34
46,87	277.401	27.839	13.255	318.495	162,16
43,22	205.630	11.895	43.142	260.667	119,85

Konur

STG	DL	YL	ÖL	HL
25,10	218.905	11.438	4.895	235.238
24,07	226.914	10.682	6.789	244.385
22,46	246.322	15.677	8.211	270.210
23,91	213.498	8.991	12.933	235.421
23,57	214.860	8.747	4.559	228.166
21,91	205.229	4.347	3.254	212.830
19,00	204.097	1.549	211	205.857
18,80	203.276	1.565	0	204.841
21,55	201.642	11.188	4.399	217.229
20,98	230.068	12.665	6.764	249.497
21,88	254.414	13.626	11.650	279.689
21,55	200.844	3.995	42.969	247.808

Læknafélag Íslands, sjúkrahúslæknar**Karlar**

MA	AR	STG	DL	YL	ÖL	HL
1	2003	347,83	428.285	135.571	169.889	733.745
2	2003	348,99	419.609	120.844	156.971	697.424
3	2003	351,54	428.550	132.158	175.534	736.243
4	2003	350,95	422.190	129.729	181.445	733.364
5	2003	390,17	423.242	124.340	156.081	703.663
6	2003	371,36	422.940	116.848	161.667	701.455
7	2003	368,67	429.099	116.937	154.030	700.066
8	2003	363,67	412.759	117.742	166.656	697.157
9	2003	353,75	416.303	125.287	180.540	722.129
10	2003	356,31	411.753	123.224	163.276	698.252
11	2003	350,49	415.129	127.029	174.102	716.260
12	2003	360,10	414.991	121.562	205.455	742.008

Allir

STG	DL	YL	ÖL	HL	Km.dl.
484,02	407.662	139.012	150.338	697.012	182,62
485,40	402.012	124.323	139.606	665.940	180,39
487,64	412.211	138.753	153.050	704.015	183,01
486,25	407.028	136.306	161.215	704.549	180,49
538,40	406.248	128.570	140.997	675.814	180,42
531,99	400.834	120.964	140.688	662.486	177,90
513,66	407.733	117.861	138.501	664.095	181,13
506,85	395.176	122.950	146.680	664.806	175,71
486,15	403.414	130.633	163.260	697.307	178,11
494,25	398.893	127.317	147.407	673.618	175,31
484,53	402.506	129.292	160.318	692.116	176,66
492,45	403.199	127.896	193.055	724.150	176,43

Konur

STG	DL	YL	ÖL	HL
136,20	354.996	147.798	100.406	603.200
136,41	356.991	133.223	95.180	585.394
136,11	370.010	155.786	94.978	620.774
135,30	367.698	153.367	108.739	629.803
148,22	361.514	139.703	101.289	602.506
160,63	349.729	130.480	92.185	572.395
144,99	353.406	120.210	99.016	572.632
143,18	350.517	136.179	95.943	582.639
132,39	368.975	144.918	117.089	630.982
137,94	365.676	137.890	106.418	609.984
134,04	369.501	135.208	124.276	628.986
132,35	371.115	145.130	159.315	675.560

Starfsmannafélag Sinfóníuhljómshv. Ísl.

		<i>Karlar</i>					
MA	AR	STG	DL	YL	ÖL	HL	
1	2003	47,83	231.631	8.810	0	240.441	
2	2003	45,32	232.306	4.754	56	237.115	
3	2003	43,65	232.092	5.196	58	237.346	
4	2003	42,37	231.729	3.840	9.791	245.359	
5	2003	40,84	236.581	30.465	0	267.046	
6	2003	46,49	236.254	13.111	0	249.365	
7	2003	40,84	230.607	2.685	0	233.292	
8	2003	41,92	228.998	2.615	0	231.614	
9	2003	42,67	237.538	25.133	0	262.670	
10	2003	43,02	236.291	3.863	117	240.271	
11	2003	43,00	236.073	3.257	59	239.389	
12	2003	43,61	234.734	2.593	36.923	274.250	

Stéttarfélag verkfræðinga

		<i>Karlar</i>					
MA	AR	STG	DL	YL	ÖL	HL	
1	2003	174,96	277.363	103.800	12.740	393.903	
2	2003	179,13	278.370	106.447	25.170	409.987	
3	2003	182,87	278.936	104.729	24.166	407.832	
4	2003	179,25	279.907	113.551	20.349	413.806	
5	2003	187,51	281.524	109.543	9.634	400.701	
6	2003	186,00	278.759	111.064	15.386	405.209	
7	2003	190,71	277.934	104.895	10.994	393.823	
8	2003	190,67	277.607	101.139	9.155	387.901	
9	2003	192,60	279.288	130.783	15.262	425.332	
10	2003	193,82	279.320	117.048	8.251	404.619	
11	2003	196,97	277.216	109.373	9.319	395.909	
12	2003	196,97	279.621	103.527	46.018	429.166	

<i>Allir</i>						
STG	DL	YL	ÖL	HL	Km.dl.	
88,27	229.308	9.647	0	238.955	165,03	
84,87	229.963	5.241	59	235.263	165,79	
83,96	229.817	4.648	30	234.495	163,92	
83,12	229.787	3.629	9.835	243.251	163,71	
77,55	231.884	30.461	0	262.345	165,45	
89,25	230.371	13.792	0	244.163	164,27	
77,79	228.954	2.979	0	231.933	163,41	
79,40	227.615	2.919	0	230.534	162,60	
80,57	232.786	25.547	0	258.334	165,13	
82,32	231.897	4.472	122	236.492	163,75	
82,30	231.677	3.690	61	235.428	163,36	
83,65	230.415	2.932	36.343	269.691	161,99	

<i>Allir</i>						
STG	DL	YL	ÖL	HL	Km.dl.	
204,53	275.897	98.606	11.557	386.061	154,69	
210,04	276.661	100.146	23.136	399.943	155,38	
209,90	277.475	100.342	23.277	401.094	154,18	
205,78	277.578	108.829	19.531	405.938	154,06	
216,63	278.752	103.260	8.778	390.790	154,94	
217,51	275.278	104.344	13.574	393.196	152,91	
220,61	274.419	98.596	9.916	382.931	152,58	
221,16	274.757	94.651	8.321	377.729	152,91	
221,52	277.348	122.352	13.778	413.478	153,26	
222,17	277.426	110.171	7.705	395.302	152,60	
229,03	275.575	103.192	8.578	387.345	151,38	
225,10	278.183	98.653	46.264	423.100	152,35	

<i>Konur</i>					
STG	DL	YL	ÖL	HL	
40,44	226.560	10.638	0	237.198	
39,55	227.278	5.799	64	233.141	
40,31	227.353	4.055	0	231.408	
40,75	227.768	3.410	9.881	241.059	
36,71	226.658	30.457	0	257.115	
42,76	223.976	14.532	0	238.508	
36,95	227.127	3.305	0	230.432	
37,48	226.067	3.258	0	229.325	
37,90	227.436	26.014	0	253.451	
39,30	227.087	5.139	128	232.354	
39,30	226.868	4.163	64	231.095	
40,04	225.712	3.302	35.712	264.726	

<i>Konur</i>					
STG	DL	YL	ÖL	HL	
29,57	267.228	67.876	4.555	339.659	
30,91	266.759	63.630	11.347	341.735	
27,03	267.591	70.658	17.263	355.512	
26,53	261.845	76.931	14.004	352.781	
29,12	260.904	62.804	3.264	326.972	
31,52	254.732	64.683	2.881	322.295	
29,89	251.994	58.405	3.037	313.436	
30,50	256.935	54.088	3.107	314.129	
28,92	264.432	66.203	3.899	334.534	
28,35	264.478	63.155	3.977	331.610	
32,06	265.493	65.215	4.023	334.730	
28,13	268.114	64.522	47.987	380.623	

Ýmsir, ríkisstarfsmenn

Kaupmáttur mældast við meðaltal ársins 1997 = 100,00.

Heilsugæslulæknaar

MA	AR	Karlarnir					Allir					K.m.d.
		STG	DL	YL	ÖL	HL	STG	DL	YL	ÖL	HL	
1	2003	85,19	433.118	49.768	255.565	738.451	112,24	429.066	51.518	238.734	719.317	274,77
2	2003	83,96	433.642	47.786	280.873	762.300	110,61	428.436	48.635	257.364	734.434	274,83
3	2003	86,54	431.407	55.043	279.575	766.025	115,52	427.083	58.924	252.982	738.989	271,05
4	2003	90,60	432.323	51.134	251.200	734.658	117,27	425.464	54.252	232.639	712.355	269,71
5	2003	91,51	428.558	56.142	265.446	750.146	116,84	423.323	55.952	253.364	732.639	268,75
6	2003	104,29	411.826	42.446	232.601	686.873	136,14	405.242	45.806	222.084	673.132	257,11
7	2003	101,93	408.739	45.454	192.319	646.511	133,49	404.520	48.060	185.920	638.500	256,90
8	2003	98,96	414.398	47.621	235.891	697.910	128,63	406.357	50.060	212.107	668.524	258,30
9	2003	85,82	433.932	54.979	350.608	839.519	117,35	417.615	54.684	303.959	776.288	263,59
10	2003	83,86	444.812	53.722	309.926	808.460	116,61	427.555	55.373	277.355	760.283	268,63
11	2003	85,97	439.687	52.427	301.983	794.097	120,54	422.068	52.817	266.575	741.459	264,81
12	2003	87,30	437.099	53.601	357.767	848.467	123,11	416.966	53.848	321.972	792.786	260,83

Kjaranefnd prófessorar

Kaupmáttur mældast við meðaltal ársins 1997 = 100,00.

MA	AR	Karlarnir					Allir					K.m.d.
		STG	DL	YL	ÖL	HL	STG	DL	YL	ÖL	HL	
1	2003	155,57	351.096	85.130	25.644	461.871	184,94	348.842	83.261	24.936	457.039	185,18
2	2003	156,17	351.005	41.079	24.297	416.381	185,54	348.773	40.601	22.832	412.206	185,46
3	2003	157,02	351.397	42.753	20.068	414.218	186,39	349.113	42.213	19.645	410.972	183,67
4	2003	157,22	351.364	42.143	29.609	423.116	186,59	349.087	41.858	27.555	418.500	183,44
5	2003	156,79	350.145	49.387	43.714	443.245	186,16	348.055	54.035	42.046	444.136	183,17
6	2003	154,69	350.279	44.274	51.065	445.617	184,64	347.828	43.982	51.466	443.276	182,94
7	2003	156,33	349.959	43.380	33.172	426.510	185,70	347.894	43.519	30.262	421.675	183,15
8	2003	157,33	349.547	49.858	46.903	446.308	186,70	347.558	48.746	50.463	446.767	183,14
9	2003	156,83	353.718	40.698	449.002	843.418	186,20	352.007	40.788	462.587	855.382	184,18
10	2003	157,33	353.692	48.514	23.772	425.978	186,70	351.990	52.528	23.344	427.861	183,32
11	2003	158,15	353.039	48.976	25.191	427.206	187,52	351.447	51.294	23.334	426.074	182,79
12	2003	157,33	353.539	49.525	89.366	492.429	186,70	351.861	54.304	88.813	494.977	182,46

Ýmsir, ríkisstarfsmenn

Júní 2004

Kjaradómur aðrir

Kjarlar		Allir					Konur				
MA	AR	STG	DL	YL	ÖL	HL	STG	DL	YL	ÖL	HL
1	2003	56,89	384,907	15,421	14,592	414,920	27,16	361,141	4,387	12,218	377,746
2	2003	58,63	390,076	16,022	14,159	420,257	27,48	367,110	4,337	12,078	383,525
3	2003	57,00	390,507	16,145	14,564	421,215	27,16	366,970	4,388	12,220	383,578
4	2003	56,20	388,956	16,885	24,208	430,049	27,10	365,042	4,397	21,290	390,729
5	2003	78,82	428,508	1,702	18,181	448,391	39,86	408,121	0	7,975	416,096
6	2003	76,55	448,064	20,076	23,600	491,741	29,80	433,020	0	27,379	460,399
7	2003	73,29	450,733	1,983	23,245	475,960	29,98	435,723	0	26,980	462,703
8	2003	72,13	449,202	1,550	23,270	474,021	29,81	433,465	0	26,629	460,094
9	2003	69,02	451,159	0	29,047	480,206	26,93	437,734	0	29,474	467,209
10	2003	73,39	451,095	0	30,899	481,994	30,17	431,401	0	24,140	455,541
11	2003	71,73	452,199	0	31,069	483,268	29,48	431,928	0	26,170	458,098
12	2003	65,71	448,662	0	71,003	519,664	21,88	429,723	0	83,861	513,584

Kjaranefnd aðrir

Kjarlar		Allir					Konur				
MA	AR	STG	DL	YL	ÖL	HL	STG	DL	YL	ÖL	HL
1	2003	246,99	431,607	16,744	83,109	531,460	61,00	407,301	18,489	71,943	497,733
2	2003	249,00	430,168	15,891	82,130	528,188	62,45	405,966	16,064	71,871	493,900
3	2003	246,90	428,688	16,013	81,943	526,644	63,96	407,104	15,685	75,793	498,582
4	2003	244,45	429,203	16,519	82,721	528,443	61,76	408,238	7,922	76,908	493,068
5	2003	245,26	429,198	14,840	82,620	526,658	63,23	406,792	13,698	71,725	492,216
6	2003	246,17	439,230	14,710	97,517	551,457	64,46	414,055	11,889	84,788	510,732
7	2003	253,36	438,586	21,198	93,911	553,695	63,88	416,143	11,276	84,865	512,283
8	2003	248,71	438,479	14,706	94,496	547,682	65,27	415,787	11,036	84,784	511,606
9	2003	248,09	440,080	16,411	97,816	554,307	63,12	416,937	12,031	89,441	518,408
10	2003	246,53	440,416	15,617	95,252	551,285	63,27	416,813	14,018	85,249	516,080
11	2003	246,20	440,407	17,749	95,387	553,543	65,12	415,469	13,182	85,656	514,307
12	2003	248,51	439,585	34,683	161,495	635,763	65,12	415,469	20,731	151,993	588,193

Kaupmáttur miðast við 03/1993 = 100,00

Ýmsir, ríkisstarfsmenn

Útan félaga

		Karlur					Konur				
MA	AR	STG	DL	YL	ÖL	HL	STG	DL	YL	ÖL	HL
1	2003	70,10	317.329	96.598	26.489	440.416	13,00	310.936	65.839	21.002	397.776
2	2003	72,08	314.929	104.042	25.051	444.022	13,50	316.401	67.412	22.870	406.683
3	2003	73,43	315.747	100.773	25.677	442.196	13,41	316.814	67.130	23.493	407.436
4	2003	69,54	320.039	97.630	35.360	453.029	13,50	316.401	71.110	31.842	419.353
5	2003	73,72	329.252	85.848	37.094	452.193	13,20	313.307	63.853	37.748	414.907
6	2003	70,65	329.719	102.226	30.795	462.740	14,38	324.991	59.200	29.953	414.144
7	2003	70,78	330.516	88.979	36.143	455.638	13,50	315.202	57.659	32.247	405.108
8	2003	68,91	327.695	86.357	36.872	450.924	13,00	320.170	57.608	33.487	411.265
9	2003	65,64	329.541	98.988	34.582	463.111	13,50	325.084	59.959	36.219	421.262
10	2003	65,10	326.215	104.644	34.772	465.631	12,00	310.913	71.614	26.632	409.159
11	2003	65,10	326.602	106.727	35.700	469.029	11,90	311.437	69.368	27.385	408.190
12	2003	62,94	327.707	131.488	80.030	539.226	11,90	311.437	66.376	73.806	451.620

		Allir					Konur				
STG	DL	YL	ÖL	HL	Km.di.	STG	DL	YL	ÖL	HL	
83,0	316.329	91.786	25.630	433.745	153,29	13,00	310.936	65.839	21.002	397.776	
85,58	315.161	98.264	24.707	438.132	152,98	13,50	316.401	67.412	22.870	406.683	
86,84	315.911	95.577	25.339	436.828	151,72	13,41	316.814	67.130	23.493	407.436	
83,04	319.447	93.319	34.788	447.554	153,24	13,50	316.401	71.110	31.842	419.353	
86,92	326.830	82.508	37.193	446.531	157,01	13,20	313.307	63.853	37.748	414.907	
85,03	328.919	94.950	30.653	454.522	157,92	14,38	324.991	59.200	29.953	414.144	
84,28	328.064	83.962	35.519	447.544	157,66	13,50	315.202	57.659	32.247	405.108	
81,91	326.501	81.794	36.335	444.630	157,03	13,00	320.170	57.608	33.487	411.265	
79,14	328.781	92.330	34.861	455.972	157,03	13,50	325.084	59.959	36.219	421.262	
77,10	323.834	99.503	33.505	456.842	153,96	12,00	310.913	71.614	26.632	409.159	
77,00	324.259	100.953	34.415	459.627	153,95	11,90	311.437	69.368	27.385	408.190	
74,84	325.120	121.135	79.041	525.296	153,90	11,90	311.437	66.376	73.806	451.620	

Kjaradómur, dómarrar

		Karlur					Konur				
MA	AR	STG	DL	YL	ÖL	HL	STG	DL	YL	ÖL	HL
1	2003	37,00	408.566	165.327	45.191	619.084	12,00	405.559	167.460	43.562	616.581
2	2003	37,00	408.566	164.140	34.458	607.164	12,00	406.726	167.793	45.405	619.923
3	2003	37,00	408.566	163.777	35.421	607.764	12,00	406.726	165.464	35.921	608.110
4	2003	37,00	408.566	163.816	52.068	624.450	12,00	406.726	165.464	40.461	612.651
5	2003	37,00	466.906	0	217.522	684.428	12,00	463.503	0	236.664	700.167
6	2003	37,00	466.906	0	214.164	681.071	12,00	463.503	0	221.300	684.802
7	2003	37,00	466.906	0	217.844	684.750	11,00	465.842	0	208.780	674.622
8	2003	37,00	466.906	0	219.120	686.026	11,00	465.842	0	219.699	685.541
9	2003	38,12	469.234	0	219.449	688.683	12,65	463.778	0	192.775	656.553
10	2003	38,12	469.234	0	200.455	669.689	13,12	462.970	0	227.552	690.522
11	2003	38,39	466.404	0	210.233	676.637	13,12	462.970	0	215.382	678.352
12	2003	35,00	468.133	0	254.519	722.652	13,12	462.970	0	259.507	722.476

		Allir					Konur				
STG	DL	YL	ÖL	HL	Km.di.	STG	DL	YL	ÖL	HL	
49,00	407.830	165.849	44.792	618.471	197,63	12,00	405.559	167.460	43.562	616.581	
49,00	408.116	165.035	37.139	610.289	198,10	12,00	406.726	167.793	45.405	619.923	
49,00	408.116	164.190	35.543	607.849	196,00	12,00	406.726	165.464	35.921	608.110	
49,00	408.116	164.220	49.225	621.561	195,77	12,00	406.726	165.464	40.461	612.651	
49,00	466.073	0	222.210	688.282	223,91	12,00	463.503	0	236.664	700.167	
49,00	466.073	0	215.912	681.985	223,77	12,00	463.503	0	221.300	684.802	
48,00	466.662	0	215.767	682.429	224,26	11,00	465.842	0	208.780	674.622	
48,00	466.662	0	219.253	685.915	224,47	11,00	465.842	0	219.699	685.541	
50,76	467.875	0	212.804	680.679	223,47	12,65	463.778	0	192.775	656.553	
51,23	467.631	0	207.392	675.023	222,33	13,12	462.970	0	227.552	690.522	
51,50	465.530	0	211.544	677.074	221,02	13,12	462.970	0	215.382	678.352	
48,12	466.726	0	255.878	722.604	220,93	13,12	462.970	0	259.507	722.476	

Kjaranefnd Prestar Þjóðkirkjunnar*Kaupmáttur miðast við 01/1993 = 100,00 og tvöfalt mánaðarkaup greiðist í febrúar ár hvert sem og stöðugildi.*

		Karlar					Allir						Konur				
MA	AR	STG	DL	YL	ÖL	HL	STG	DL	YL	ÖL	HL	Km.dl.	STG	DL	YL	ÖL	HL
1	2003	111,61	281.646	623	81.815	364.084	144,67	282.120	481	79.877	362.478	209,18	33,07	283.722	0	73.334	357.056
2	2003	223,12	275.608	0	40.200	315.807	286,04	275.900	0	39.835	315.735	204,91	62,92	276.935	0	38.542	315.478
3	2003	111,18	281.951	0	81.090	363.041	144,31	282.348	0	79.345	361.692	207,48	33,13	283.680	0	73.486	357.167
4	2003	110,44	283.104	0	81.176	364.280	144,01	283.235	0	79.355	362.590	207,89	33,57	283.665	0	73.362	357.027
5	2003	111,76	283.006	0	80.238	363.244	146,41	283.320	0	77.710	361.030	208,26	34,65	284.334	0	69.556	353.889
6	2003	108,15	288.516	0	95.109	383.625	139,72	288.557	0	92.792	381.350	211,97	31,57	288.699	0	84.856	373.555
7	2003	172,19	286.476	127	58.575	345.178	221,68	286.559	98	58.123	344.780	210,71	49,49	286.848	0	56.550	343.397
8	2003	106,06	288.681	651	95.207	384.539	139,02	288.928	497	93.256	382.681	212,64	32,95	289.722	0	86.978	376.700
9	2003	110,54	288.576	263	95.421	384.261	143,70	288.734	202	93.450	382.386	211,01	33,16	289.261	0	86.877	376.138
10	2003	108,61	288.511	0	94.898	383.409	143,42	288.274	0	92.811	381.085	209,71	34,82	287.533	0	86.304	373.837
11	2003	108,50	288.638	0	94.523	383.161	144,08	288.316	0	92.483	380.799	209,44	35,59	287.334	0	86.262	373.597
12	2003	110,02	288.392	0	153.478	441.870	145,65	288.142	0	151.334	439.476	208,69	35,63	287.368	0	144.715	432.083

Stéttarfélag íslenskra lyfjafraeðinga*Kaupmáttur miðast við meðaltal ársins 1991 = 100,00*

		Karlar					Allir						Konur				
MA	AR	STG	DL	YL	ÖL	HL	STG	DL	YL	ÖL	HL	Km.dl.	STG	DL	YL	ÖL	HL
1	2003						21,76	246.097	95.293	4.014	345.404	124,06					
2	2003						21,35	246.094	94.484	2.233	342.811	124,27					
3	2003						21,03	246.023	91.913	2.795	340.730	122,92					
4	2003						38,26	296.844	78.567	34.765	410.177	148,14					
5	2003						38,13	297.275	73.997	23.092	394.363	148,57					
6	2003						38,13	299.477	72.164	19.063	390.705	149,58					
7	2003						38,38	299.810	72.138	14.840	386.788	149,89					
8	2003						36,44	303.243	70.415	21.715	395.373	151,74					
9	2003						36,97	302.885	71.243	19.533	393.661	150,50					
10	2003						38,52	300.828	74.184	17.386	392.398	148,79					
11	2003						38,35	300.734	82.726	18.456	401.917	148,54					
12	2003						38,08	302.784	67.574	55.277	425.635	149,10					

Ýmsir, ríkisstarfsmenn

Kaupmáttur miðast við 01/1991 = 100,00

Starfsmannafélag Alþingis		Karlar					Allir					Konur					
		MA	AR	STG	DL	YL	ÖL	HL	STG	DL	YL	ÖL	HL	STG	DL	YL	ÖL
1	2003	70,73	245,305	15,716	77,208	338,228	148,49	224,298	14,175	56,667	295,140	165,23	77,76	205,189	12,774	37,982	255,944
2	2003	70,17	246,565	13,298	76,337	336,200	148,79	224,849	13,491	57,299	295,639	165,92	78,62	205,466	13,664	40,308	259,437
3	2003	68,66	246,525	14,678	76,693	337,896	147,89	224,907	16,386	56,308	297,600	164,20	79,23	206,171	17,866	38,642	262,679
4	2003	69,78	251,747	16,996	194,817	463,560	148,28	230,143	15,616	163,819	409,578	167,83	78,49	210,935	14,390	136,259	361,585
5	2003	70,76	256,557	17,852	70,283	344,691	147,75	232,506	11,677	51,240	295,423	169,81	76,99	210,403	6,001	33,738	250,142
6	2003	73,98	254,380	13,466	66,461	334,308	151,54	232,789	13,091	53,368	299,248	169,90	77,56	212,196	12,733	40,879	265,808
7	2003	74,93	252,967	10,843	64,074	327,884	149,94	233,873	7,810	50,134	291,817	170,86	75,01	214,799	4,780	36,208	255,787
8	2003	73,55	253,494	7,725	66,987	328,206	144,87	234,329	6,064	51,312	291,705	171,35	71,32	214,563	4,351	35,147	254,061
9	2003	73,48	254,758	15,402	66,761	336,921	148,56	234,920	9,887	50,770	295,577	170,57	75,08	215,504	4,489	35,120	255,113
10	2003	73,54	256,183	20,978	66,655	343,816	150,43	234,959	17,211	50,253	302,422	169,82	76,89	214,659	13,608	34,566	262,832
11	2003	73,83	256,671	11,470	67,478	335,619	150,85	234,772	11,935	52,056	298,763	169,45	77,02	213,781	12,380	37,274	263,435
12	2003	75,15	257,742	15,414	106,089	379,245	153,25	235,733	19,617	89,560	344,910	169,63	78,10	214,555	23,661	73,656	311,872

3.5 Starfsmenn Reykjavíkurborgar

Kaupmáttur hjá Reykjavíkurborg miðast við meðaltal 1990 = 100,00, nema annað sé tekið fram.

Júní 2004

Starfsmannafélag Reykjavíkurborgar án háskólahóps

		Kartlar					Allir					Konur					
MA	AR	STG	DL	YL	ÖL	HL	STG	DL	YL	ÖL	HL	Km.dl.	STG	DL	YL	ÖL	HL
1	2003	755.88	138.170	68.669	20.697	226.354	1.925,68	134.457	42.227	11.980	187.463	143,87	1.170,00	132.058	25.135	6.348	162.338
2	2003	765.66	137.566	60.631	19.224	216.280	1.933,39	134.813	40.207	11.407	184.699	144,50	1.167,73	133.009	26.816	6.282	163.992
3	2003	776.43	136.968	61.154	17.671	214.730	1.955,02	134.334	39.855	10.761	183.308	142,46	1.178,60	132.599	25.824	6.209	162.609
4	2003	773.14	137.920	60.106	28.059	224.952	1.960,83	134.419	39.619	20.178	192.467	142,38	1.187,69	132.139	26.283	15.047	171.320
5	2003	786.03	137.819	71.323	16.949	224.968	1.992,62	134.318	45.256	11.087	189.098	142,49	1.206,59	132.038	28.274	7.268	165.731
6	2003	1.009.38	131.461	47.594	14.606	193.082	2.397,49	129.227	33.253	9.793	171.450	137,00	1.388,10	127.603	22.824	6.293	155.721
7	2003	1.011,10	131.256	43.857	13.720	188.340	2.334,82	129.122	30.239	9.687	168.339	137,02	1.323,72	127.492	19.837	6.606	153.062
8	2003	852.67	136.071	52.840	15.909	204.388	2.056,80	132.745	34.592	10.509	177.099	140,99	1.204,13	130.389	21.671	6.685	157.775
9	2003	749.24	139.743	59.546	18.705	217.661	1.863,18	135.931	37.674	11.254	184.108	143,36	1.113,94	133.367	22.964	6.242	161.541
10	2003	750.32	139.409	58.316	19.363	216.883	1.875,85	135.942	38.162	11.468	184.692	142,71	1.125,53	133.631	24.726	6.204	163.233
11	2003	750.08	139.756	59.651	20.339	219.552	1.878,04	136.238	38.481	11.807	185.780	142,83	1.127,96	133.899	24.403	6.133	163.322
12	2003	752.92	140.285	59.218	55.917	255.181	1.880,76	136.708	38.904	48.149	223.273	142,89	1.127,85	134.320	25.343	42.964	201.972

Starfsmannafélag Reykjavíkurborgar háskólahópur

		Kartlar					Allir					Konur					
MA	AR	STG	DL	YL	ÖL	HL	STG	DL	YL	ÖL	HL	Km.dl.	STG	DL	YL	ÖL	HL
1	2003	87.35	214.395	64.239	13.409	282.043	287,95	199.218	40.642	7.989	246.514	145,94	200,60	192.609	30.367	5.486	226.690
2	2003	86.78	213.799	73.762	13.379	300.941	286,17	199.782	45.734	8.296	252.097	146,60	199,39	193.681	33.534	6.083	230.838
3	2003	87.24	213.584	69.654	14.183	295.396	292,50	199.254	42.509	8.400	247.911	144,66	205,26	193.163	30.971	5.941	227.728
4	2003	88.35	213.248	69.902	24.971	307.757	293,37	199.652	43.546	19.195	260.934	144,78	205,01	193.792	32.187	16.706	240.754
5	2003	90.33	212.900	73.312	13.447	299.658	298,15	199.401	44.943	8.236	251.297	144,81	207,83	193.534	32.613	5.972	230.278
6	2003	98.37	208.065	65.435	11.327	284.827	321,44	194.471	40.910	7.100	240.903	141,14	223,07	188.476	30.096	5.236	221.533
7	2003	92.01	210.217	67.790	12.422	290.430	304,87	196.245	41.473	7.700	243.413	142,57	212,86	190.205	30.096	5.659	223.089
8	2003	88.59	213.981	64.840	11.373	290.194	302,16	197.816	39.271	6.982	242.418	143,84	213,57	191.111	28.665	5.161	222.601
9	2003	89.53	214.598	63.019	12.975	290.592	304,73	199.809	39.556	7.838	245.385	144,27	215,20	193.657	29.794	5.701	226.578
10	2003	89.54	214.995	72.879	13.522	301.397	301,70	200.562	46.694	8.475	254.181	144,15	212,15	194.471	35.642	6.344	234.253
11	2003	88.41	215.042	67.792	13.485	296.318	298,96	201.041	44.019	8.332	251.842	144,29	210,55	195.162	34.037	6.169	233.167
12	2003	86.41	219.173	74.025	60.029	353.227	297,03	204.556	44.015	49.237	296.248	146,37	210,62	198.559	31.703	44.810	272.872

Starfsmannafélag Reykjavíkurborgar alls.

MA	AR	<i>Karlar</i>					<i>Allir</i>						Km.dl.	<i>Konur</i>				
		STG	DL	YL	ÖL	HL	STG	DL	YL	ÖL	HL	STG		DL	YL	ÖL	HL	
1	2003	843,23	146.065	68.211	19.942	233.158	2.213,83	142.880	42.016	11.448	195.144	145,81	1.370,60	140.920	25.901	6.222	171.757	
2	2003	852,44	145.327	61.968	18.629	224.899	2.219,56	143.190	40.920	11.006	193.389	146,38	1.367,12	141.858	27.796	6.253	173.741	
3	2003	863,67	144.708	62.012	17.319	222.878	2.247,53	142.783	40.200	10.454	191.716	144,41	1.383,86	141.583	26.587	6.169	172.268	
4	2003	861,50	145.646	61.111	27.742	233.445	2.254,20	142.908	40.130	20.050	201.377	144,37	1.392,70	141.215	27.152	15.292	181.541	
5	2003	876,36	145.558	71.528	16.588	232.667	2.290,78	142.789	45.215	10.716	197.194	144,47	1.414,42	141.074	28.912	7.077	175.215	
6	2003	1.107,75	138.263	49.178	14.315	201.229	2.718,93	136.941	34.158	9.475	179.661	138,46	1.611,18	136.032	23.831	6.147	164.833	
7	2003	1.103,11	137.842	45.854	13.612	196.856	2.639,69	136.875	31.537	9.457	177.010	138,53	1.536,58	136.180	21.258	6.475	162.763	
8	2003	941,26	143.404	53.969	15.482	212.464	2.358,96	141.080	35.192	10.057	185.466	142,91	1.417,70	139.537	22.725	6.455	167.541	
9	2003	838,76	147.733	59.917	18.094	225.446	2.167,90	144.910	37.939	10.774	192.722	145,76	1.329,14	143.129	24.070	6.154	172.071	
10	2003	839,86	147.467	59.868	18.740	225.893	2.177,54	144.895	39.344	11.053	194.320	145,08	1.337,68	143.280	26.457	6.227	174.496	
11	2003	838,49	147.694	60.510	19.617	227.646	2.177,00	145.137	39.241	11.330	194.852	145,12	1.338,51	143.536	25.918	6.139	174.308	
12	2003	839,33	148.406	60.743	56.340	265.275	2.177,79	145.962	39.601	48.298	233.226	145,51	1.338,47	144.429	26.344	43.254	213.129	

Félag íslenskra leikskólakennara hjá Reykjavíkurborg

MA	AR	<i>Karlar</i>					<i>Allir</i>						Km.dl.	<i>Konur</i>				
		STG	DL	YL	ÖL	HL	STG	DL	YL	ÖL	HL	STG		DL	YL	ÖL	HL	
1	2003						425,92	184.702	23.808	1.898	207.855	162,96						
2	2003						427,59	184.474	25.048	1.410	207.387	163,03						
3	2003						425,10	184.456	23.334	1.423	205.479	161,29						
4	2003						424,26	184.621	24.107	12.084	218.275	161,24						
5	2003						430,43	184.261	27.660	1.788	209.370	161,17						
6	2003						434,73	184.200	25.285	1.528	208.829	161,02						
7	2003						412,52	185.119	20.981	9.069	214.026	161,97						
8	2003						424,77	184.881	17.768	1.127	201.143	161,91						
9	2003						450,20	185.159	23.933	961	203.872	161,01						
10	2003						450,77	185.303	27.191	1.607	209.299	160,40						
11	2003						449,01	185.455	29.509	1.363	211.396	160,31						
12	2003						447,90	185.124	24.187	48.851	255.184	159,55						

Sjúkraliðafélg Íslands hjá Reykjavíkurborg

MA	AR	Karlur					HL
		STG	DL	YL	ÖL	HL	
1	2003						
2	2003						
3	2003						
4	2003						
5	2003						
6	2003						
7	2003						
8	2003						
9	2003						
10	2003						
11	2003						
12	2003						

Allir						Km.dl.
STG	DL	YL	ÖL	HL		
45,04	171.651	57.497	21.855	251.004	188,33	
44,88	173.367	25.576	27.466	226.410	190,53	
45,47	173.072	26.501	21.504	221.077	188,19	
46,00	172.170	25.089	32.041	229.300	186,99	
47,98	173.454	69.466	17.287	260.207	188,66	
49,31	172.372	33.902	21.103	227.303	187,37	
47,41	172.810	28.021	16.441	217.273	188,02	
46,11	173.268	31.272	19.537	224.077	188,69	
44,93	175.911	22.587	19.865	218.363	190,22	
43,99	176.155	26.802	22.383	225.340	189,62	
43,38	180.364	27.494	23.755	227.886	193,88	
42,81	180.020	20.711	58.350	258.031	192,93	

Konur				
STG	DL	YL	ÖL	HL

Háskólamenn innan BHM hjá Reykjavíkurborg

MA	AR	Karlur					HL
		STG	DL	YL	ÖL	HL	
1	2003	72,47	270.593	77.230	12.622	360.445	
2	2003	71,74	271.377	83.769	11.820	366.967	
3	2003	71,46	271.582	82.673	11.884	366.139	
4	2003	71,95	271.951	86.255	20.720	378.926	
5	2003	72,81	270.209	82.596	13.765	366.570	
6	2003	79,67	263.899	69.243	11.071	344.212	
7	2003	77,23	264.783	62.218	10.819	337.820	
8	2003	75,20	265.794	67.895	10.973	344.662	
9	2003	73,45	267.940	74.697	11.326	353.963	
10	2003	73,17	267.787	79.126	12.727	359.640	
11	2003	73,22	267.868	84.295	12.408	364.572	
12	2003	72,80	268.270	87.322	50.820	406.412	

Allir						Km.dl.
STG	DL	YL	ÖL	HL		
281,36	235.515	40.980	9.919	286.414	193,39	
280,65	235.519	43.190	9.879	288.012	193,72	
279,20	235.656	40.119	8.646	284.421	191,78	
279,19	235.734	43.847	17.690	297.054	191,62	
286,53	235.628	45.860	10.209	290.644	191,82	
297,01	234.388	39.431	8.637	281.587	190,69	
290,10	234.690	33.636	8.079	275.736	191,12	
295,52	234.531	34.338	7.410	275.635	191,16	
295,64	233.727	37.081	7.937	277.784	189,17	
297,05	233.378	41.467	8.854	281.387	188,02	
297,96	234.568	42.705	8.716	284.186	188,71	
296,96	235.824	40.112	44.340	318.081	189,16	

Konur				
STG	DL	YL	ÖL	HL
208,89	223.345	28.404	8.981	260.731
208,91	223.205	29.254	9.213	260.899
207,75	223.300	25.482	7.532	256.314
207,24	223.160	29.124	16.638	268.629
213,71	223.846	33.343	8.997	264.775
217,33	223.570	28.501	7.744	258.629
212,87	223.772	23.266	7.084	253.211
220,33	223.860	22.885	6.194	252.075
222,19	222.416	24.645	6.817	252.600
223,88	222.133	29.159	7.588	255.812
224,74	223.719	29.156	7.513	257.998
224,17	225.287	24.780	42.236	289.396

Háskólamenn utan bandalaga hjá Reykjavíkurborg

MA	AR	Karlar					Allir						Konur	DL	YL	ÖL	HL
		STG	DL	YL	ÖL	HL	STG	DL	YL	ÖL	HL	Km.dl.					
1	2003						105,82	271.855	104.726	33.259	409.841	159,35					
2	2003						105,82	271.763	112.766	32.500	417.028	159,57					
3	2003						107,82	271.903	106.136	33.566	411.604	157,95					
4	2003						109,32	271.788	109.561	42.032	423.381	157,70					
5	2003						111,46	271.105	99.296	32.516	402.917	157,54					
6	2003						116,70	267.609	103.285	30.700	401.594	155,41					
7	2003						119,66	266.139	97.393	30.246	393.778	154,70					
8	2003						113,92	268.890	90.206	30.251	388.760	156,45					
9	2003						111,91	270.047	106.167	30.312	406.527	156,01					
10	2003						113,43	269.529	106.626	31.128	407.283	155,00					
11	2003						115,46	269.316	113.118	31.232	413.667	154,66					
12	2003						115,20	269.698	114.254	67.488	451.440	154,42					

Kennarahópur hjá Reykjavíkurborg

Kaupmáttur miðast við 08/1996 = 100,00

MA	AR	Karlar					Allir						Konur	DL	YL	ÖL	HL
		STG	DL	YL	ÖL	HL	STG	DL	YL	ÖL	HL	Km.dl.					
1	2003	309,18	222.217	48.717	190	267.124	1.478,41	212.944	34.943	333	244.346	164,62	1.169,23	210.493	31.300	371	238.323
2	2003	317,11	222.512	53.840	477	272.855	1.497,66	212.781	40.971	448	248.997	164,77	1.180,55	210.167	37.514	441	242.589
3	2003	312,82	224.964	60.301	105	280.974	1.482,40	213.826	42.029	303	250.443	163,82	1.169,58	210.847	37.143	356	242.278
4	2003	317,39	223.486	59.604	543	279.272	1.485,23	213.618	41.987	217	251.126	163,47	1.167,84	210.936	37.199	129	243.476
5	2003	313,18	226.092	58.208	44.232	323.548	1.484,91	214.107	41.744	45.692	297.259	164,09	1.171,73	210.904	37.344	46.083	290.233
6	2003	306,34	224.258	21.024	71	242.916	1.469,97	213.673	14.959	117	226.011	163,65	1.163,62	210.886	13.362	129	221.560
7	2003	294,27	226.300	4.405	70	228.608	1.429,11	214.848	4.941	-216	216.936	164,71	1.134,84	211.879	5.080	-291	213.910
8	2003	293,01	226.867	15.673	-651	240.189	1.487,67	214.897	9.640	-353	221.226	164,90	1.194,67	211.961	8.160	-279	216.575
9	2003	292,68	228.095	50.862	-669	277.399	1.468,00	215.762	36.493	-368	248.455	164,40	1.175,32	212.690	32.914	-293	241.247
10	2003	298,61	226.735	59.252	-729	284.280	1.488,10	215.171	41.270	-13	253.039	163,20	1.189,50	212.268	36.756	167	245.196
11	2003	303,37	226.899	57.938	-635	282.383	1.484,01	215.600	42.055	-334	253.305	163,29	1.180,64	212.696	37.974	-257	245.834
12	2003	298,31	225.441	54.708	42.710	321.648	1.495,82	215.165	39.084	43.973	294.624	162,48	1.197,51	212.605	35.192	44.287	287.892

4. Ýmislegt

4.1 Vísitala neysliverðs (framfærsluvísitala) með grunn 1981:

Hér að neðan er yfirlit yfir þróun vísitölu neysliverðs, eins og hún er útgefin af Hagstofu Íslands.

Þessi grunnur er notaður í útreikningum KOS, þegar vegið er með neysliverðs-vísitölunni.

Vísitala neysliverðs frá 1981 samkvæmt Hagstofu Íslands

Álm.	jan.	feb.	mar.	apr.	maí	jún.	júl.	ágú.	sep.	okt.	nóv.	des.
1981	100,00	101,60	104,70	109,40	109,80	115,70	118,30	119,60	124,30	127,50	131,50	138,70
1982	141,10	144,30	152,00	158,80	159,90	168,80	173,60	178,80	194,00	202,10	210,10	221,70
1983	230,90	241,90	267,20	285,40	298,50	327,20	340,00	362,50	365,20	376,50	386,90	391,60
1984	394,40	397,00	401,30	407,00	410,60	420,20	424,10	430,70	433,40	438,20	443,80	465,30
1985	485,40	502,10	515,70	524,40	535,40	545,30	558,50	575,30	590,20	603,30	616,60	632,50
1986	651,10	666,00	655,80	659,80	671,10	675,50	678,40	686,10	694,20	697,20	711,50	718,00
1987	734,60	745,40	756,50	767,00	776,40	791,90	805,80	825,80	835,20	849,00	876,10	893,40
1988	926,60	934,40	943,00	956,60	973,40	1.006,90	1.041,80	1.063,40	1.071,20	1.074,80	1.075,50	1.077,50
1989	1.095,50	1.112,00	1.142,50	1.167,30	1.190,30	1.225,40	1.233,90	1.250,50	1.275,90	1.301,10	1.320,70	1.349,30
1990	1.355,70	1.377,80	1.389,20	1.393,40	1.406,00	1.415,70	1.425,00	1.429,40	1.429,20	1.433,10	1.442,90	1.446,40
1991	1.455,50	1.459,80	1.463,30	1.470,10	1.487,70	1.508,20	1.518,00	1.529,70	1.538,90	1.551,00	1.557,50	1.555,80
1992	1.559,60	1.566,10	1.563,30	1.563,20	1.562,10	1.567,60	1.571,50	1.571,50	1.569,90	1.570,90	1.570,90	1.579,10
1993	1.597,50	1.608,50	1.610,40	1.615,00	1.618,80	1.617,80	1.632,20	1.647,30	1.652,50	1.662,20	1.662,20	1.654,00
1994	1.648,30	1.649,90	1.651,80	1.653,80	1.653,80	1.655,70	1.658,60	1.659,60	1.664,50	1.662,50	1.661,60	1.662,50
1995	1.675,20	1.677,10	1.674,20	1.672,30	1.675,20	1.677,10	1.682,00	1.688,80	1.694,70	1.702,40	1.696,60	1.695,60
1996	1.702,40	1.705,40	1.708,30	1.711,20	1.721,90	1.720,00	1.721,90	1.732,60	1.736,50	1.737,50	1.738,50	1.730,70
1997	1.736,50	1.737,50	1.736,50	1.749,20	1.746,20	1.750,10	1.753,10	1.757,90	1.764,70	1.770,60	1.768,60	1.765,70
1998	1.754,40	1.771,60	1.778,40	1.782,30	1.788,10	1.791,00	1.787,10	1.777,40	1.779,30	1.787,10	1.792,0	1.788,70
1999	1.798,80	1.795,90	1.804,60	1.814,40	1.823,10	1.838,20	1.844,20	1.851,20	1.867,00	1.881,60	1.881,70	1.888,10
2000	1.902,60	1.897,50	1.911,50	1.923,40	1.930,80	1.938,50	1.948,20	1.938,20	1.942,20	1.961,60	1.966,90	1.966,70
2001	1.970,30	1.973,90	1.985,60	2.009,90	2.038,10	2.069,30	2.085,30	2.092,00	2.105,80	2.119,30	2.126,60	2.136,50
2002	2.156,20	2.150,30	2.159,40	2.160,30	2.159,40	2.168,70	2.170,60	2.158,90	2.170,10	2.181,40	2.177,50	2.179,00
2003	2.186,80	2.183,10	2.206,50	2.209,10	2.205,80	2.207,20	2.205,10	2.203,10	2.218,70	2.228,90	2.232,00	2.238,70

REGLUGERÐ UM NEFND UM KJARARANNSÓKNIR OPINBERRA STARFSMANNA

1. gr.

Nefnd um kjararannsóknir opinberra starfsmanna starfar í þeim tilgangi að safna saman og miðla upplýsingum um kjör starfsmanna hjá opinberum aðilum, kjör annarra launþega og þróun launa og kjaramála almennt til þeirra, sem að nefndinni standa, sbr. 4. gr.

2. gr.

Nefndin aflar upplýsinga um kjör, sbr. 1. gr., sem hér segir:

1. Með söfnun, skipulagningu og skráningu upplýsinga um laun og önnur kjaraatriði opinberra starfsmanna, sem aðilar að nefndinni leggja henni til.
2. Með öflun og skipulegri skráningu upplýsinga frá öðrum aðilum, sem stunda reglubundnar kjararannsóknir.
3. Með gerð sérstakra athugana, sem aðilar að nefndinni ákveða hverju sinni.

3. gr.

Nefndin miðlar upplýsingum til þeirra opinberu vinnuveitenda, sem láta nefndinni í té upplýsingar og stéttarféлага starfsmanna þeirra með reglulegum skýrslum og sérstökum skýrslum eftir því sem við á.

Allar upplýsingar, sem safnað er eða unnar eru á vegum nefndarinnar, aðrar en þær, sem nefndin birtir, sbr. fyrri málsgrein, eru trúnaðarmál og er einstökum aðilum að nefndinni óheimilt að notfæra sér þær eða birta án samþykkis allra nefndarmanna.

4. gr.

Nefndin er skipuð 10 fulltrúum. Tveir fulltrúar vinnuveitenda eru tilnefndir af fjármálaráðherra, einn af launanevnd sveitarfélaga, einn af Reykjavíkurborg og einn úr hópi forsvarsmanna sjálfseignarstofnana samkvæmt nánari ákvörðun fjármálaráðherra.

Þrjú fulltrúar launþega skulu tilnefndir af BSRB, einn af BHMR og einn af KÍ. Nefndin skiptir með sér verkum og ákveður sér framkvæmdastjórn.

5. gr.

Nefndin setur sér starfsreglur, m.a. um starfssvið og starfshætti og ákveður nánar með hvaða hætti hún hagar störfum að verkefnum skv. 1.-3. grein. Nefndin skal kosta kapps um að skapa einhug um lausn þeirra verkefna sem henni eru falin. Ákvarðanir um verkefni og birtingu á niðurstöðum verða ekki teknar með afli atkvæða.

6. gr.

Kostnaður vegna starfa nefndarinnar greiðist úr ríkissjóði samkvæmt fjárveitingum í fjárlögum. Nefndin ræður sér sjálf starfsmenn.

7. gr.

Reglugerð þessi er sett samkvæmt lögum nr. 94 31. desember 1986, um kjarasamninga opinberra starfsmanna og öðlast þegar gildi.

Fjármálaráðuneytið 7. júlí 1987

Þorsteinn Pálsson (sign)
Indriði H. Þorláksson (sign)



**Kjararannsóknarnefnd
opinberra starfsmanna
Borgartúni 21, 105 R.**