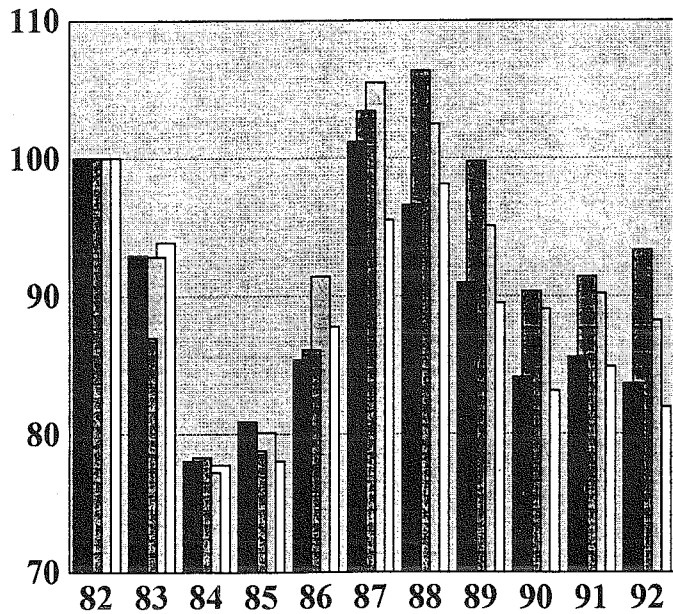


FRÉTTARIT KOS

Nr. 8

Júlí 1993



FRÉTTARIT KOS

Nr. 8

Júlí 1993

Útgefandi:
Kjararannsóknarnefnd
Opinberra
Starfsmanna

Skrifstofa KOS: Borgartúni 22 3.h.
105 REYKJAVÍK
Sími: (91) 62 60 30

EFNISYFIRLIT:

1.0	Inngangur o.fl.	
1.1.	Skýringar	3
1.2.	KOS, nefndarskipan o.fl	4
1.3.	Frá framkvæmdastjórn KOS	5
1.4.	Lög og reglugerð	5
1.5.	Listi yfir stéttarfélög	7
2.0.	Fjöldi, samsetning hópa og starfsaldursdreifing	
2.1.	Yfirlit um skiptingu og fjölda opinberra starfsmanna á 4. ársfjórðungi 1992	8
2.2.	Dreifing launa karla og kvenna eftir starfsaldri miðað við 4. ársfj. 1992. . . .	9
3.0.	Dreifing dagvinnu og heildarlauna	
3.1.	Dreifing dagvinnulauna	12
3.2.	Dreifing heildarlauna	15
4.0.	Mánaðar og ársfjórðungstölur	
4.1.	Mánaðartölur, kaupmáttur dagvinnul. .	17
4.2.	Ársfjórðungstölur kaupmáttar	35
4.3.	Meðallaun frá 1982 til 1992	39
4.4.	Framfærsluvísitalan frá 1981	40

1.1. SKÝRINGAR :

Í þessari útgáfu eru starfsmenn ríkisins, starfsmenn Reykjavíkurborgar og ýmsir hópar launþega, sem taka laun hjá ríkinu. Til stendur einnig að taka inn hópa frá fleiri bæjar- og sveitarfélögum.

GR, STG.	=	Greidd stöðugildi í dagvinnu (Stg.)
STÖÐUGILDI	=	Fjöldi launþega í fullu starfi
TAXTALAUN	=	Föst mánaðarlaun samkvæmt töxtum. (Tl.)
YFIRVL.	=	Greidd laun fyrir yfirvinnu. (Yl.)
ÖNNUR.L.	=	Öll önnur greidd laun á launaseðlum. (Öl.)
HEILDARL.	=	Summan af taxtalaunum, yfirvinnulaunum og öðrum launum (Hl.)
HREINT		
TÍMAKAUP	=	Laun án orlofs fyrir dagvinnu að viðbættum hvers kyns aukagreiðslum svo sem yfirborgunum, fæðis-, ferða-, fata- og verkfærapeningum deilt með dagvinnutímum. Þessi stærð er því hlutur dagvinnu í meðaltíma kaupi.
DAGVINNUL.	=	Laun og aðrar greiðslur sem greiddar eru fyrir dagvinnutíma, t.d. taxtalaun, ýmis álög önnur en vaktálgö. o.fl. (Dl.)

ATH að breyting hefur orðið á vinnslu dagvinnulauna frá og með 1990. Öll laun sem tilheyra dagvinnu reiknast nú sem dagvinnulaun og um leið reiknast þau yfir í hlutfall stöðugilda og koma þar einnig til viðbótar. Mismunur á milli þessara aðferða er óverulegur hvað meðallaun varðar. Fleiri stöðugildi teljast þó í stéttarfélagnum en áður.

Ársfjórðungstölur eru unnar þannig að tekið er þriggja mánaða vegið meðaltal af talnasöfnum hvers félags.

Nokkur félög innan BHMR voru í verkfalli hluta af mars og/eða apríl 1987. Launin fyrir þessa mánuði voru leiðrétt með því að taka vegið meðaltal launatalnanna mánuðinn fyrir verkfall og mánuðinn eftir verkfall og það notað fyrir verkfalls mánuðinn/mánuðina.

Eftirtalin félög voru leiðrétt: (Verkfalls mánuðirnir, sem voru leiðréttir, eru í sviga). Kjarafélag bókasafnsfr. (apríl), Fél.háskm.hjúkrunarfr. (mars, apr.), Fél.isl.náttúrufr. (mars, apr.), Stéttarfélag.isl.sjúkraþj. í ríkisþj. (mars, apr.), Hið isl. kennaraf., framh.sk. (mars), Hið isl. kennaraf., grunnsk. (mars), Hið isl. kennaraf., alls (mars), Stéttarf. matvæla- og nær.fræð. (apríl), Stéttarfélag.sálfr. á Ísl. (mars, apr.), Stéttarf.isl.fél.ráðgj.(mars, apr.), Kjaraf. iðjuþjálf. (mars, apr.), samtölur fyrir BHMR (mars, apr.)

Tölum fyrir félag háskólamenntaðra starfsmanna stjórnarráðsins var breytt fyrir janúar 1987 og þær gerðar sambærilegar við febrúar 1987, vegna stofnunar félagsins á þessum tíma.

Verkföll urðu hjá nokkrum félögum innan BHMR í apríl og maí 1989. Eins var farið með leiðréttingar og að ofan er greint. Félagin voru DÍ, KFB, FHH, FIF, FÍN, SSR, HÍK/F, HÍK/G, HÍK/A, SMN, SSI, SÍF, SLÍR, OG KFÍ.

Félög og hópar taka sig stundum út úr einum hópi og/eða bandalgi, eða þá að þeir ganga í hóp eða bandalag. Ekki eru gerðar sérstakar ráðstafanir til þess að reikna slíka hópa upp á nýtt. Hvorki þá hópa sem missa viðkomandi félag né það bandalag, hóp eða félag sem fær viðkomandi hóp til sín. Í flestum tilvikum byrja slíkir hópar eða félög, sem nýir hópar/félög frá og með þeim tíma, sem þeir verða til. Stjórnumerkt er við þau félög og upphafstímabils, sem kaupmáttur miðast við, er getið.

1.2. KOS, nefndarskipan ofl.

KJARARANNSÓKNARNEFND OPINBERRA STARFSMANNA (KOS) skipa nú eftirtaldir aðilar:

Fulltrúar atvinnurekenda:

Arndís Steinþórsdóttir
Birgir Guðjónsson
Björn Jósef Arnviðarson
Jón G. Kristjánsson
Logi Guðbrandsson

Fulltrúar launafólks:

Birgir Björn Sigurjónsson
Einar Ólafsson
Eiríkur Jónsson
Erlingur Aðalsteinsson
Rannveig Sigurðardóttir

FRAMKVÆMDASTJÓRN KOS skipa:

Birgir Guðjónsson, Birgir Björn Sigurjónsson, Jón G. Kristjánsson og Rannveig Sigurðardóttir.

FRAMKVÆMDASTJÓRI KOS er: Geir Thorsteinsson.

HEIMILISFANG KOS er:

KJARARANNSÓKNARNEFND OPINBERRA STARFSMANNA
BORGARTÚNI 22 3.H.
105 REYKJAVÍK

SÍMINN HJÁ K O S er: (91) - 62 60 30.

EFTIRPRENTUN ER HEIMIL ÚR RITINU, ENDA SÉ HEIMILDAR GETIÐ.

1.3. Frá Framkvæmdastjórn K O S:

Í þessu hefti KOS eru upplýsingar á nýjum grunni frá og með árinu 1990. Nú er unnið með greidd dagvinnulaun í stað fastra dagvinnulauna og um leið er einnig unnið með greiddum fjölda stöðugilda. Eins og áður er unnið úr öllum greiddum launum frá viðkomandi launaskrifstofum.

Kosturinn við þessar upplýsingar, umfram þær, sem fást við kaup og kjör annarra, en þeirra er vinna hjá ríki og borg, er að hér er ekki um úrtak að ræða. Upplýsingarnar ná til launa allra þeirra er vinna hjá ríki og borg og allra launa, sem skráð eru hjá Starfsmannaskrifstofu fjármálaráðuneytisins og Launaskrifstofu Reykjavíkurborgar. Þar með er ekki sagt að efnið sé gallalaust;

Tölurnar sýna laun allra þeirra, sem í starfi eru á hverjum tíma. Þetta getur valdið erfiðleikum í samanburði. T.d. lækka meðaldagvinnulaun flestra starfsmannafélaga yfir sumarmánuðina, vegna þess, að sumarafleysingafókið kemur inn í lægstu starfsaldursþrepinn. Þetta gerist ekki hjá t.d. H.F.Í. og verður að taka tillit til þess, þá sumarmánuðirnir eru bornir saman.

Meðallaun - og kaupmáttur þeirra - einkum lítilla hópa - geta breyst mjög mikið við það eitt, að nokkrir starfsmenn í efsta starfsaldursþrepi fara á eftirlaun en nýliðar taka við.

Stærsta vandamálið er þó að ná í samanburðarhæfar tölur um laun og aðrar greiðslur til launþega á almennum vinnumarkaði og þeirra opinberu starfsmanna sem ekki taka laun frá Starfsmannaskrifstofu fjármálaráðuneytisins. Framkvæmdastjórn KOS hefur, í samráði og samvinnu við Kjararannsóknarnefnd ASÍ/VSÍ og fleiri aðila, unnið nýjan gagnagrunn til söfnunar á launaupplýsingum. Þar með er mögulegt að safna öllum launum upp á sambærilegu formi og vinna upplýsingar úr þeim. Nú þegar er þessi vinnsla komin í gagnið í nokkrum launakerfum og skil fara fram með þessum hætti og áfram er unnið að forritun í launakerfunum.

KOS vinnur að því að finna leiðir til að endurbæta talnaefnið með tilliti til m.a. ofantalinna þátta.

ATH. Notendum heftisins er bent á að geyma þetta hefti, því sennilega munu yfirlitsráðirnar ekki birtast á sama hátt á næstunni.

1.4. Lög og reglugerð:

LÖG OG REGLUGERÐ.

KJARARANNSÓKNARNEFND OPINBERRA STARFSMANNA starfar samkvæmt 34. grein laga nr. 94/1986 um kjarasamninga opinberra starfsmanna, sem hljóðar þannig:

Á vegum þeirra aðila, sem lög þessi taka til, starfi nefnd er annist kjararannsóknir og aðra upplýsingaöflun vegna kjarasamninga.

Nefndin skal skipuð jafnmörgum fulltrúum stéttarfélaganna og vinnuveitenda samkvæmt nánari ákvæðum í reglugerð sem sett skal að fengnum tillögum heildarsamtaka opinberra starfsmanna og Sambands íslenskra sveitarfélaga.

Nefndin setur sér starfsreglur, m.a. um starfssvið og starfshætti.

Kostnaður við störf nefndarinnar greiðist úr ríkissjóði.

Á grundvelli laganna var gefin út reglugerð nr. 335/1987:

REGLUGERÐ
UM
NEFND UM KJARARANNSÓKNIR OPINBERRA STARFSMANNA

1. gr.

Nefnd um kjararannsóknir opinberra starfsmanna starfar í þeim tilgangi að safna saman og miðla upplýsingum um kjör starfsmanna hjá opinberum aðilum, kjör annarra launþega og þróun launa og kjaramála almenn til þeirra, sem að nefndinni standa, sbr. 4. gr.

2. gr.

Nefndin aflar upplýsinga um kjör, sbr. 1. gr., sem hér segir:

1. Með söfnun, skipulagningu og skráningu upplýsinga um laun og önnur kjaraatriði opinberra starfsmanna, sem aðilar að nefndinni leggja henni til.
2. Með öflun og skipulegri skráningu upplýsinga frá öðrum aðilum, sem stunda reglubundnar kjararannsóknir.
3. Með gerð sérstakra athugana, sem aðilar að nefndinni ákveða hverju sinni.

3. gr.

Nefndin miðlar upplýsingum til þeirra opinberu vinnuveitenda, sem láta nefndinni í té upplýsingar og stéttarféлага starfsmanna þeirra með reglulegum skýrslum og sérstökum skýrslum eftir því sem við á.

Allar upplýsingar, sem safnað er eða unnar eru á vegum nefndarinnar, aðrar en þær, sem nefndin birtir, sbr. fyrri málsgrein, eru trúnaðarmál og er einstökum aðilum að nefndinni óheimilt að notfæra sér þær eða birta án samþykkis allra nefndarmanna.

4. gr.

Nefndin er skipuð 10 fulltrúum. Tveir fulltrúar vinnuveitenda eru tilnefndir af fjármálaráðherra, einn af launanefnd sveitarfélaga, einn af Reykjavíkurborg og einn úr hópi forsvarsmanna sjálfséignarstofnana samkvæmt nánari ákvörðun fjármálaráðherra.

Þrjú fulltrúar launþega skulu tilnefndir af BSRB, einn af BHRM og einn af KÍ.
Nefndin skiptir með sér verkum og ákveður sér framkvæmdastjórn.

5. gr.

Nefndin setur sér starfsreglur, m.a. um starfssvið og starfshætti og ákveður nánar með hvaða hætti hún hagar störfum að verkefnum skv. 1.-3. grein. Nefndin skal kosta kapps um að skapa einhug um lausn þeirra verkefna sem henni eru falin. Ákvarðanir um verkefni og birtingu á niðurstöðum verða ekki teknar með afli atkvæða.

6. gr.

Kostnaður vegna starfa nefndarinnar greiðist úr ríkissjóði samkvæmt fjárveitingum í fjárlögum. Nefndin ræður sér sjálf starfsmenn.

7. gr.

Reglugerð þessi er sett samkvæmt lögum nr. 94 31. desember 1986, um kjarasamninga opinberra starfsmanna og öðlast þegar gildi.

Fjármálaráðuneytið 7. júlí 1987

Þorsteinn Pálsson (sign)
Indriði H. Þorláksson (sign)

1.5. Listi yfir stéttarfélög sem eru í heftinu:

BSRB, ríkisstarfsmenn

Félag flugmálastarfsmanna ríkisins
Félag íslenskra símamanna, skrifstofuhópur
Félag íslenskra símamanna, tæknihópur
Félag íslenskra símamanna, alls
Félag starfsmanna stjórnarráðsins
Fóstrufélag Íslands
Landssamband lögreglumanna
Ljósmeðrafélag Íslands
Póstmannafélag Íslands
Starfsmannafélag ríkisútvarpsins
Starfsmannafélag sjónvarpsins
Starfsmannaf. ríkisst. starfsm. Alp.
Starfsmannafélag ríkisstofnana, S
Starfsmannafélag ríkisstofnana, H
Starfsmannafélag ríkisstofnana, alls
Tölvvarðafélag Íslands
BSRB félögin hjá ríkinu, alls

BHMR, ríkisstarfsmenn

BHMR hópur 1 (HÍK/G)
(Hið isl. kennarafél., Grunnskólar)
BHMR hópur 2 (HÍK/F)
(Hið isl. kennarafél., Framh.sk.)
BHMR hópur 3 (FH,FHA,KKHÍ,FTK)
(Félag háskólakennara)
(Félag háskólakennara á Akureyri)
(Kennarafélag KHI)
(Félag tækniskólakennara)
BHMR hópur 4 (FHH,SSR,KFÍ,SÍF,MTÍ,RTÍ)
(Félag háskólamentaðra hjúkrf.)
(Stéttarfélag sjúkraþj. í ríkisþjónustu)
(Kjarafélag iðjuþjálfra)
(Stéttarfélag ísl. félagsráðgj.)
(Meinataeknafélag Íslands)
(Röntgentæknafélag Íslands)
BHMR hópur 5 (LÆÍ,DÍ,SSI,PI)
(Læknafélag Íslands)
(Dýralæknafélag Íslands)
(Stéttarfél. sálfr. á Íslandi)
(Prestafélag Íslands)
BHMR hópur 6 (KVH,KFÍ,SLÍR,FHSS)
(Kjaraf. viðsk. og hagfr.)
(Kjarad. fél. ísl. félagsvísindamanna)
(Stéttarf. lögfr. í ríkisþj.)
(Fél. háskólam. starfsm. stjórn.)
BHMR hópur 7 (KA,FÍN,SMN,FF)
(Kjarafélag arkitekta)
(Félag íslenskra náttúrufræðinga)
(Stéttarfél. matvæla- og næringarfræðinga)
(Félag fréttamanna)
BHMR hópur 8 (KFB,FÍF,ÚTG)
(Kjarafélag bókasafnsfræðinga)
(Félag íslenskra fræða)
(Útgáður, félag háskólamanna)
BHMR félögin, alls

K.Í.

Kennarasamband Íslands grunnskólar
Kennarasamband Íslands framhaldsskólar
Kennarasamband Íslands, alls

Reykjavíkurborg

Starfsmannafélag Reykjavíkurborgar (STRV)
Háskólahópur hjá Reykjavíkurborg (STRHM)
Fóstrufélag Íslands (FOSTR)
Hjúkrunarfélag Íslands (HFÍ/R)
Ýmsir hópar hjá Rborg (YMRB)

Ýmsir hópar ríkisstarfsmanna

Félag íslenskra flugumferðarstjóra
Hjúkrunarfélag Íslands
Kjarafélag tæknifræðinga
Læknafélag Íslands, sjúkrahúslækn.
Starfsmannafél. Símfónuhlj. Íslands
Stéttarfélag verkfræðinga
Utan féлага kjaradómströðun
Utan féлага ráðherraröðun

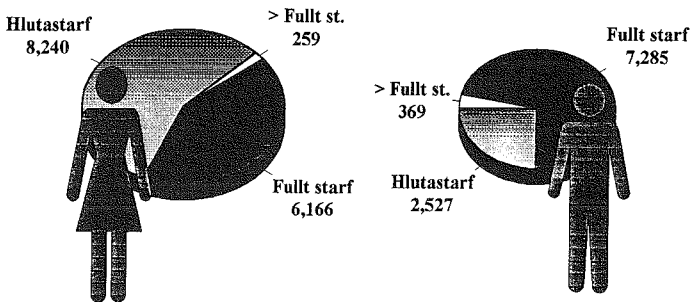
2.0. Fjöldi, samsetning hópa og starfsaldursdreifing:

Hér á eftir fer yfirlit um samsetningu hópa og bandalaga skipt eftir kyni svo og yfirlit um hvernig meðaldagvinnulaun og meðalheildarlaun starfsmanna í **fullu starfi** dreifast eftir starfsaldri og kyni.

2.1. Yfirlit um skiptingu og fjölda opinberra starfsmanna á 4. ársfjórðungi 1992:

Alls voru 24,846 einstaklingar í gagnasafni KOS á 4. ársfjórðungi 1992. Það svarar til u.þ.b. 18 % af fjölda vinnandi manna á Íslandi. Konur voru 14,665 og karlar voru 10,181.

Mynd 2.1.1. Skipting fjölda eftir kyni og hlutfalli starfs.



Taflan hér á eftir sýnir skiptingu starfsmanna eftir kyni og starfshlutfalli innan bandalaga og hópa. Eingöngu er um að ræða ríkisstarfsmenn neðangreindra bandalaga, og hópa, en tölurnar fyrir Rborg sýna skiptingu allra opinberra starfsmanna Reykjavíkurborgar.

Tafla 2.1.1. Skipting fjölda eftir bandalögum, kynjum og hlutfalli starfs.

Bandalag/ Hópur	Kyn.	Hlutastarf		Fullt starf		Meira en fullt st.	
		Fjöldi	Hlutfall	Fjöldi	Hlutfall	Fjöldi	Hlutfall
BSRB	Karlar	888	9.5	2569	27.6	39	0.4
	Konur	3302	35.4	2464	26.4	62	0.7
BHMR	Karlar	436	10.4	1634	38.9	213	5.1
	Konur	849	20.2	956	22.7	117	2.8
Kí	Karlar	255	6.5	918	23.3	45	1.1
	Konur	1337	33.9	1358	34.4	31	0.8
Rborg	Karlar	676	13.6	1070	21.6	15	0.3
	Konur	2190	44.1	985	19.8	27	0.5
Ýmsir ríkis.stm.	Karlar	272	11.3	1094	45.4	57	2.4
	Konur	562	23.3	403	16.7	22	0.9

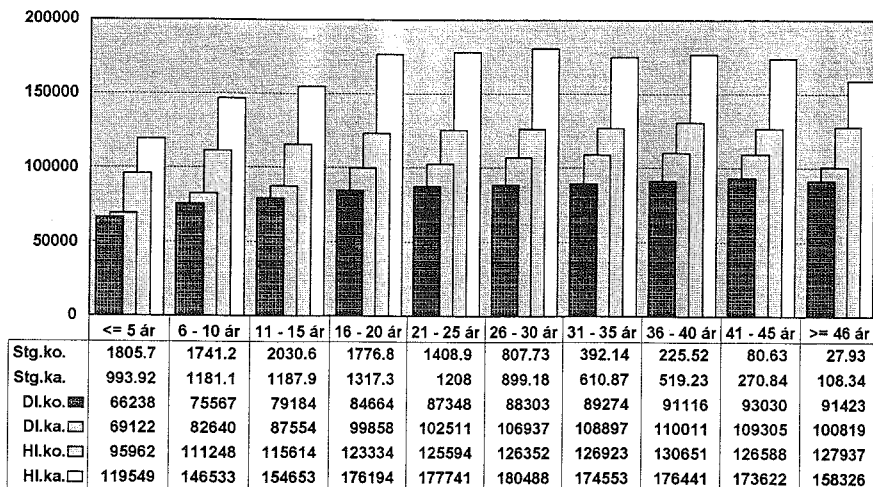
Hlutfallstölur eru reiknaðar af heildarfjölda einstaklinga innan hvers bandalags eða hóps

2.2. Dreifing launa karla og kvenna eftir starfsaldri miðað við 4. ársfjórðung 1992:

Á næstu síðum birtast stöplarit sem sýna fjölda stöðugilda og meðaltal dagvinnu- og heildarlauna karla og kvenna skipt upp á 5 ára starfsaldursbil. Reiknað er í heilum árum og starfmönnum skipt upp í 10 starfsaldursbil, þar sem efsti hópurinn er með starfsaldur jafnan eða meiri en sem nemur 46 árum. Fjöldi starfsmanna kemur ekki fram heldur eru lögð saman öll stöðugildi á viðkomandi starfsaldursbili, þar sem 1.00 stöðugildi jafngildir einum starfsmanni í fullu starfi. Starfsmönnum, sem voru ekki með skráðan starfsaldur, eða með stöðugildi minna en 10% var sleppt. Fremsta súlan í hverju starfsaldursbili sýnir dagvinnulaun hjá konum að meðaltali, súlan þar fyrir aftan sýnir meðallaun dagvinnu hjá körlum, þriðja súlan sýnir heildarlaun kvenna og síðasta súlan sýnir heildarlaun karla í viðkomandi starfsaldurshópi.

Graf 2.2.1

Meðallaun dagvinnu- og heildarlauna allra opinberra starfsmanna ríkis og borgar skipt upp á 5 ára starfsaldursbil, 4. ársfjórðungur 1992:



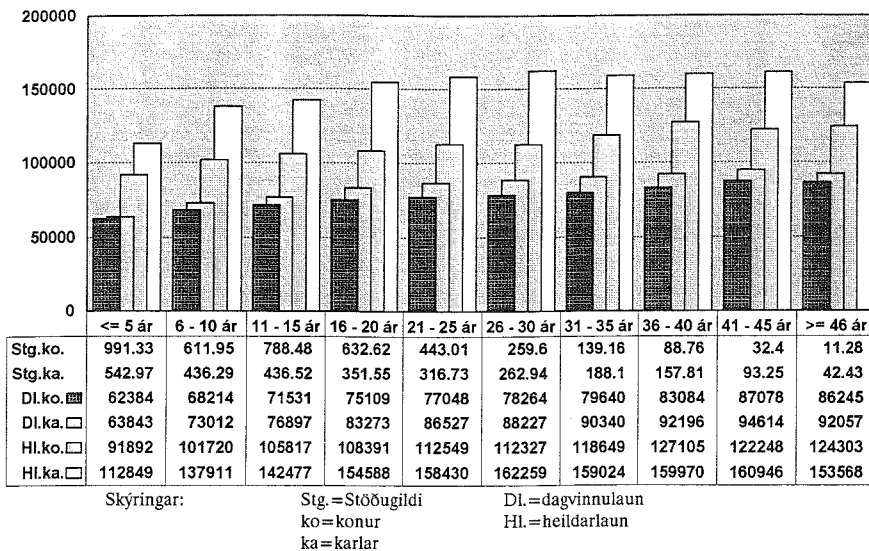
Skýringar:

Stg. = Stöðugildi
ko = konur
ka = karlar

DI. = dagvinnulaun
HI. = heildarlaun

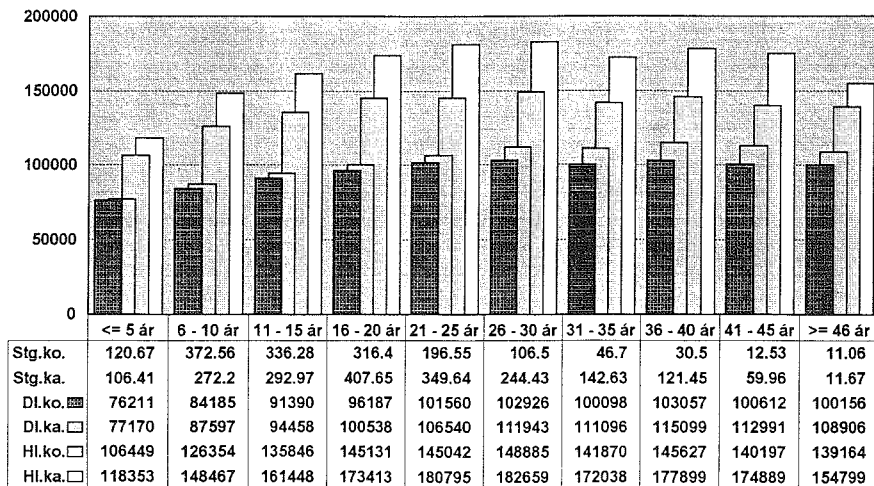
Graf 2.2.2.

Meðallaun dagvinnu- og heildarlauna BSRB ríkisstarfsmanna skipt upp á 5 ára starfsaldursbil, 4. ársfjórðungur 1992:



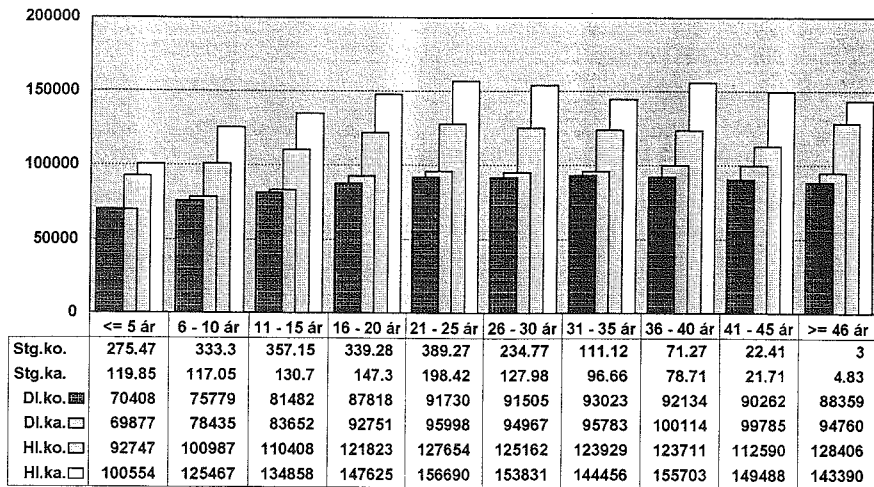
Graf 2.2.3.

Meðallaun dagvinnu- og heildarlauna BHRM ríkisstarfsmanna skipt upp á 5 ára starfsaldursbil, 4. ársfjórðungur 1992:



Graf 2.2.4.

Meðallaun dagvinnu- og heildarlauna K.Í. ríkisstarfsmanna skipt upp á 5 ára starfsaldursbil, 4. ársfjórðungur 1992:



Skýringar:

Stg.=Stöðugildi

Dl.=dagvinnulaun

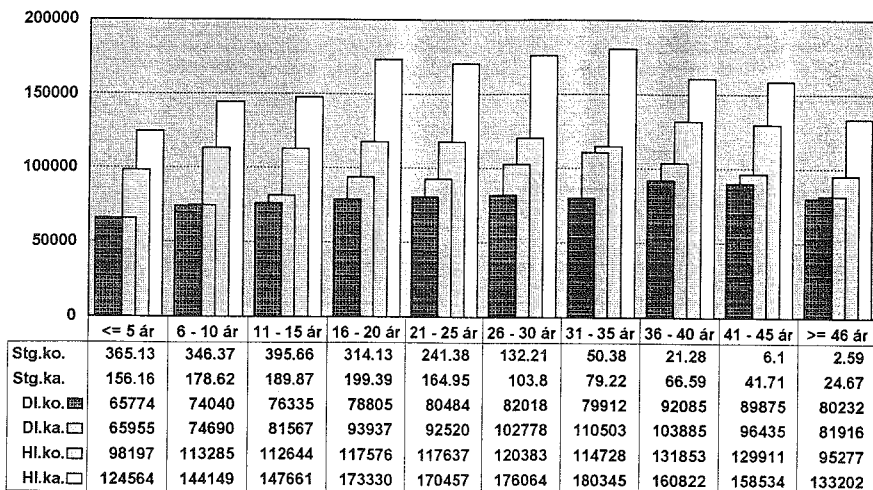
ko=konur

Hl.=heildarlaun

ka=karlar

Graf 2.2.5.

Meðallaun dagvinnu- og heildarlauna allra opinberra starfsmanna hjá Reykjavíkurborg, skipt upp á 5 ára starfsaldursbil, 4. ársfjórðungur 1992:



3.0. Dreifing dagvinnu- og heildarlauna á 4. ársfjórðungi 1992:

Hér á eftir fara línurit yfir dreifingu dagvinnu- og heildarlauna þeirra, sem eru í fullu starfi, eftir bandalögum. Fyrstu fjórar myndirnar sýna hvernig fjöldi starfsmanna dreifist eftir upphæðum dagvinnulauna, en næstu fjórar sýna dreifingu starfsmanna eftir heildarlaunum.

Ath. ber að ekki er notaður sami kvarði á dreifingu dagvinnu- og heildarlauna. Unnið var uppúr launum 4. ársfjórðungs 1992 fyrir bandalögin og eingöngu reiknuð út dreifing launa þeirra, sem voru í fullu starfi.

Á ásnum vinstra megin er hlutfallsleg dreifing fjölda starfsmanna miðað við launaupphæðir. Launabilið er 5000 kr. á lárétta ásnum. Skyggða kúrfan á grafinu tilheyrir ásnum til vinstri, en línán á grafinu tilheyrir ásnum, sem er hægra megin. Af línunni er hægt að lesa uppsafnaða dreifingu allra starfsmanna eftir upphæðum launa með því að lesa af ásnum hægra megin.

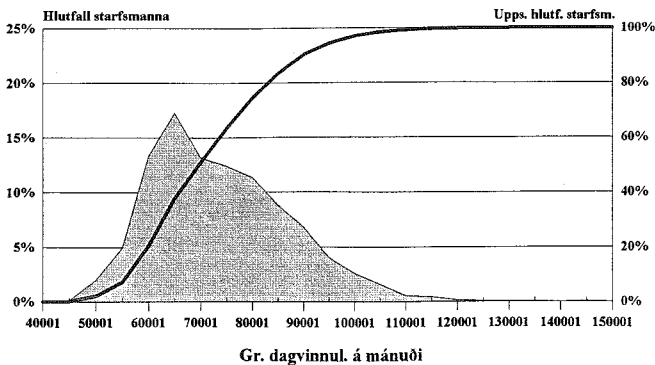
Línurit yfir bæði dagvinnu- og heildarlaun K.Í. sýna ekki rétt meðallaun kennara. Skýringin á því er sú að kennarar fá að meðaltali hærri laun yfir skólamánuðina. Taka ber tillit til þess þegar lesið er úr gröfunum. Aðrar sveiflur sem fram koma, eru t.d. þegar eingreiðslur koma til útborgunar. T.d. er persónuuppbót greidd sem eingreiðsla í desember. Hún kemur að öllu leyti inn í heildarlaunin og verða þau því hærri, sem uppbótinni nemur.

3.1. Dreifing dagvinnulauna.

Hér að neðan er sýnd dreifing dagvinnulauna starfsmanna innan BSRB ríkisstarfsmanna. Eingöngu er miðað við starfsmenn í fullu starfi og meðallaun miðuð við 2. ársfjórðung 1992.

Graf 3.1.1.

BSRB ríkisstarfsmenn, dagvinnulaun, fullt starf, 4. ársfjórðungur 1992:

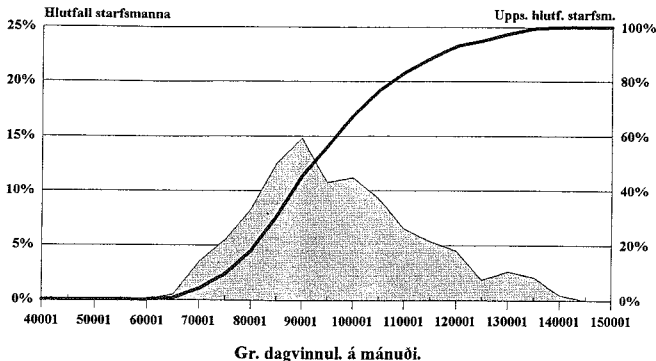


Ásinn vinstra megin er notaður þegar skyggða svæðið er skoðað en ásinn hægra megin er notaður þegar lesa á af línunni. Ath. að y ásnarir eru ekki með sama mælikvarða.

Hér að neðan er sýnd dreifing dagvinnulauna starfsmanna innan BHMR ríkisstarfsmanna. Eingöngu er miðað við starfsmenn í fullu starfi og meðallaun miðuð við 4. ársfjórðung 1992.

Graf 3.1.2.

BHMR ríkisstarfsmenn, dagvinnulaun, fullt starf, dagvinnulaun, fullt starf, 4. ársfjórðungur 1992:

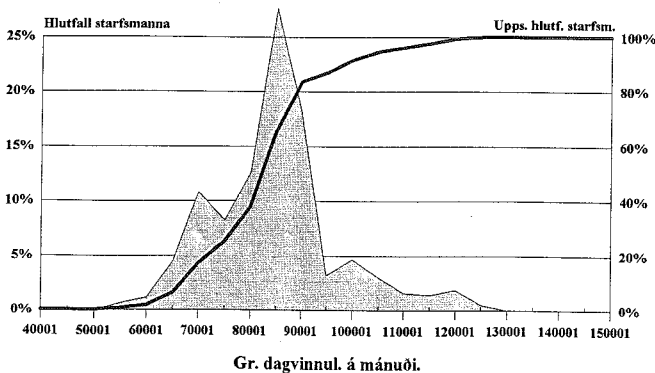


Ásinn vinstra megin er notaður þegar skyggða svæðið er skoðað en ásinn hægra megin er notaður þegar lesa á af línunni.

Hér að neðan er sýnd dreifing dagvinnulauna starfsmanna innan Kennarasambands Íslands ríkisstarfsmanna. Eingöngu er miðað við starfsmenn í fullu starfi og meðallaun miðuð við 4. ársfjórðung 1992. Ath. ber að meðallaun hjá KÍ fyrir ákveðinn ársfjórðung, gefa ekki rétta mynd. Þau eru hærri á meðan skóli starfar og lægri utan skólatíma.

Graf 3.1.3.

K.Í., dagvinnulaun, fullt starf 4. ársfjórðungur 1992.

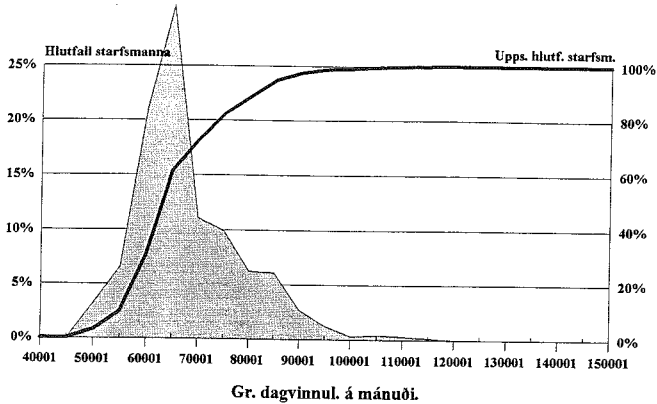


Ásinn vinstra megin er notaður þegar skyggða svæðið er skoðað en ásinn hægra megin er notaður þegar lesa á af línunni.

Hér að neðan er sýnd dreifing dagvinnulauna starfsmanna innan Starfsmannafélags Reykjavíkurborgar. Eingöngu er miðað við starfsmenn í fullu starfi og meðallaun miðuð við 4. ársfjórðung 1992.

Graf 3.1.4.

Starfsmannafélag Reykjavíkurborgar, dagvinnulaun, fullt starf, 4. ársfj. 1992:



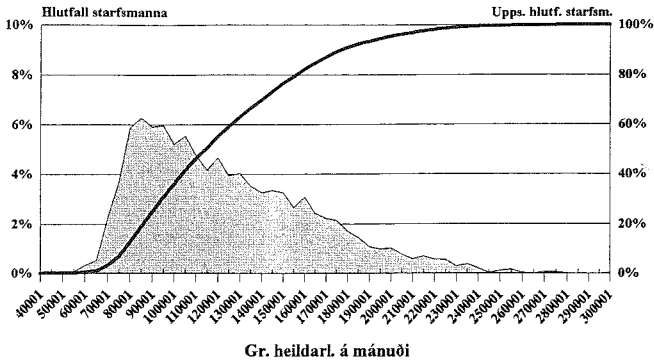
Ásinn vinstra megin er notaður þegar skyggða svæðið er skoðað en ásinn hægra megin er notaður þegar lesa á af línunni.

3.2. Dreifing heildarlauna á 4. ársfjórðungi 1992:

Hér að neðan er sýnd dreifing heildarlauna starfsmanna innan BSRB ríkisstarfsmanna. Eingöngu er miðað við starfsmenn í fullu starfi og útreikningur miðar við 4. ársfjórðung 1992.

Graf 3.2.1.

BSRB ríkisstarfsmenn, heildarlaun, fullt starf, 4. ársfjórðungur 1992:

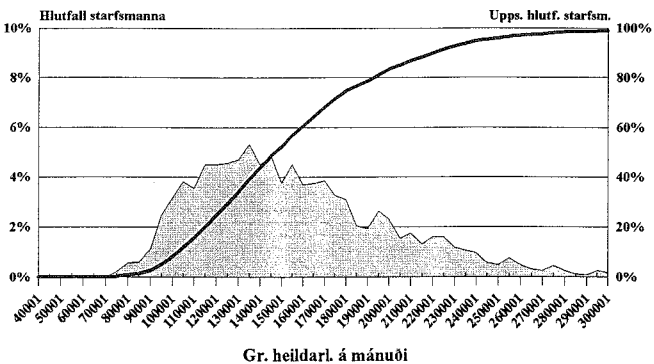


Ásinn vinstra megin er notaður þegar skyggða svæðið er skoðað en ásinn hægra megin er notaður þegar lesa á af línunni.

Hér að neðan er sýnd dreifing heildarlauna starfsmanna innan BHMR ríkisstarfsmanna. Eingöngu er miðað við starfsmenn í fullu starfi og útreikningur miðar við 4. ársfjórðung 1992.

Graf 3.2.2.

BHMR, heildarlaun, fullt starf, 4. ársfjórðungur 1992:

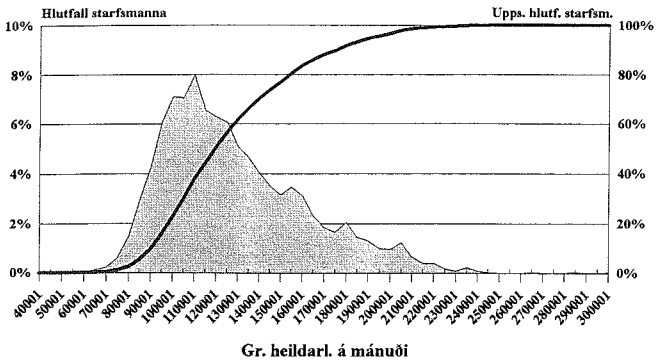


Ásinn vinstra megin er notaður þegar skyggða svæðið er skoðað en ásinn hægra megin er notaður þegar lesa á af línunni.

Hér að neðan er sýnd dreifing heildarlauna starfsmanna innan Kennarasambands Íslands ríkisstarfsmanna. Eingöngu er miðað við starfsmenn í fullu starfi og útreikningur miðar við 4. ársfjórðung 1992. Ath. ber að meðallaun hjá KÍ fyrir ákveðinn ársfjórðung, gefa ekki rétta mynd. Þau eru hærri á meðan skóli starfar og lægri utan skólatíma.

Graf 3.2.3.

K.Í., heildarlaun, fullt starf, 4. ársfjórðungur 1992:

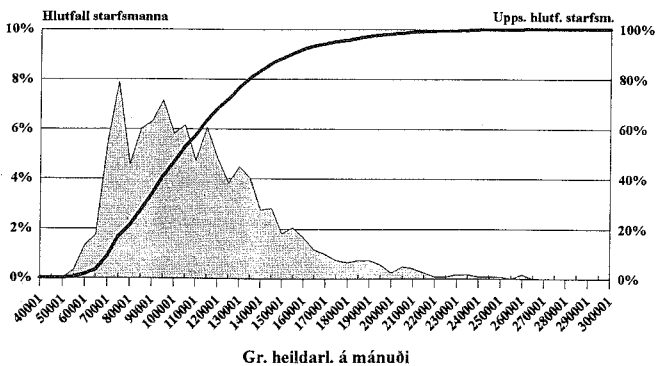


Ásinn vinstra megin er notaður þegar skyggða svæðið er skoðað en ásinn hægra megin er notaður þegar lesa á af línunni.

Hér að neðan er sýnd dreifing heildarlauna starfsmanna innan Starfsmannafélags Reykjavíkurborgar. Eingöngu er miðað við starfsmenn í fullu starfi og útreikningur miðar við 4. ársfjórðung 1992.

Graf 3.2.4.

Starfsmannafélag Reykjavíkurborgar, heildarlaun, fullt starf, 4. ársfjórðungur 1992:



Ásinn vinstra megin er notaður þegar skyggða svæðið er skoðað en ásinn hægra megin er notaður þegar lesa á af línunni.

4.0. Mánaðar- og ársfjórðungstölur.

Hér á eftir birtast meðallaun og kaupmáttur dagvinnulauna frá og með janúar 1991 til og með desember 1992. Ársfjórðungskaupmáttartölur birtast þar fyrir aftan fyrir sama tímabil. Ath. ber stjórnumerkingar sem skýrðar eru fyrir neðan hverja stjórn.

4.1. Mánaðartölur, kaupmáttur dagvinnulauna.

Hér á næstu síðum eru útreiknuð meðallaun eftir félögum, hópum og bandalögum ásamt kaupmætti dagvinnulauna.

Kaupmáttur miðar við janúar 1987 = 100.00, nema annað sé tekið sérstaklega fram í stjórnumerkingum.

Skýringar: M = mánuður, Dl. = dagvinnulaun, Yl. = yfirvinnulaun, Öl. = Önnur laun, Hl. = heildarlaun, Km.dl. = kaupmáttur dagvinnulauna.

BSRB ríkisstarfsmenn, mánaðartölur:

Félag flugmálastarfsmanna ríkisins

M.	Ár	Stg.	Dl.	Yl.	Öl.	Hl.	Km.dl.
1	1991	111.70	66,816	45,811	13,427	126,054	98.31
2	1991	114.04	66,591	45,145	10,998	122,734	97.69
3	1991	115.70	68,349	47,816	11,031	127,196	100.03
4	1991	128.54	66,301	42,995	11,979	121,275	96.59
5	1991	128.88	66,352	48,577	12,265	127,194	95.52
6	1991	136.67	68,003	47,283	16,783	132,069	96.56
7	1991	141.62	67,855	43,541	9,838	121,234	95.73
8	1991	140.07	67,899	41,862	10,379	120,140	95.06
9	1991	134.81	68,136	43,883	9,808	121,827	94.82
10	1991	132.17	68,227	40,731	11,342	120,300	94.21
11	1991	131.28	68,392	41,729	11,865	121,986	94.04
12	1991	129.05	68,215	27,713	32,955	128,883	93.90
1	1992	128.02	68,565	44,131	16,421	129,117	94.15
2	1992	127.86	68,620	41,536	13,706	123,862	93.84
3	1992	126.62	68,766	46,450	13,226	128,442	94.21
4	1992	124.93	69,006	44,574	21,837	135,417	94.54
5	1992	125.39	70,224	46,655	14,634	131,513	96.28
6	1992	124.49	70,800	48,927	12,128	131,855	96.73
7	1992	125.65	71,121	45,859	11,188	128,168	96.92
8	1992	123.79	71,355	49,599	12,395	133,349	97.24
9	1992	116.84	71,903	44,639	12,295	128,837	98.09
10	1992	114.09	72,313	48,762	12,640	133,715	98.59
11	1992	109.02	72,725	49,446	14,242	136,413	99.15
12	1992	112.72	72,671	46,701	35,722	155,094	98.56

Félag íslenskra símannanna, skrifstofuhópur

M.	Ár	Stg.	Dl.	Yl.	Öl.	Hl.	Km.dl.
1	1991	476.38	70,770	33,214	3,312	107,296	100.36
2	1991	481.76	70,929	31,413	3,357	105,699	100.29
3	1991	483.14	72,720	27,291	2,926	102,937	102.58
4	1991	484.47	72,858	39,015	2,939	114,812	102.30
5	1991	498.99	72,631	36,196	3,272	112,099	100.77
6	1991	551.54	73,282	30,489	8,445	112,216	100.29
7	1991	568.80	73,239	29,184	3,183	105,606	99.59
8	1991	555.19	73,621	27,730	3,033	104,384	99.34
9	1991	502.49	75,387	32,317	3,668	111,372	101.12
10	1991	497.23	75,396	33,788	3,246	112,430	100.34
11	1991	495.97	75,358	34,134	3,446	112,938	99.87
12	1991	495.79	75,088	32,749	27,048	134,885	99.62

1	1992	435.75	72,407	32,364	4,068	108,839	95.83
2	1992	435.78	72,437	26,767	4,212	103,416	95.47
3	1992	432.50	72,528	27,549	4,119	104,196	95.76
4	1992	432.45	72,860	30,304	12,678	115,842	96.21
5	1992	452.95	73,426	33,431	3,094	109,951	97.02
6	1992	489.82	72,288	27,047	4,826	104,161	95.19
7	1992	499.06	72,450	23,082	5,582	101,114	95.16
8	1992	487.63	72,449	24,669	3,920	101,038	95.16
9	1992	435.53	74,344	29,438	8,918	112,700	97.75
10	1992	429.56	74,420	29,547	5,171	109,138	97.79
11	1992	425.50	74,440	28,114	7,048	109,602	97.81
12	1992	435.55	74,136	28,804	30,630	133,570	96.91

Félag íslenskra símamanna, tæknihópur

M.	Ár	Stg.	Di.	Yl.	Öl.	Hl.	Km.dl.
1	1991	342.13	73,447	52,635	4,971	131,053	92.71
2	1991	341.44	73,840	52,309	4,867	131,016	92.93
3	1991	334.77	75,493	47,818	4,627	127,938	94.78
4	1991	340.12	75,091	57,499	4,660	137,250	93.84
5	1991	353.24	74,288	46,543	4,252	125,083	91.74
6	1991	356.60	76,608	49,164	10,766	136,538	93.32
7	1991	350.10	76,970	47,490	4,046	128,506	93.15
8	1991	351.13	76,703	48,976	4,234	129,913	92.12
9	1991	346.05	77,043	50,951	4,603	132,597	91.98
10	1991	355.07	76,745	49,462	4,604	130,811	90.91
11	1991	356.45	76,841	52,384	5,263	134,488	90.64
12	1991	360.67	76,091	40,354	27,622	144,067	89.85
1	1992	406.10	79,321	51,906	5,602	136,829	93.44
2	1992	406.47	79,757	53,780	5,521	139,058	93.56
3	1992	409.54	79,284	45,523	5,274	130,081	93.17
4	1992	412.33	79,590	53,519	13,550	146,659	93.54
5	1992	422.02	80,116	50,458	4,682	135,256	94.22
6	1992	437.20	79,968	50,455	4,975	135,398	93.72
7	1992	432.11	80,180	44,230	5,025	129,435	93.73
8	1992	428.10	80,413	45,216	4,562	130,191	94.01
9	1992	414.57	81,169	48,092	7,670	136,931	94.99
10	1992	407.89	81,273	50,016	5,849	137,138	95.05
11	1992	410.23	80,955	48,450	12,448	141,853	94.68
12	1992	409.36	80,852	42,891	30,298	154,041	94.07

Félag íslenskra símamanna, alls

M.	Ár	Stg.	Di.	Yl.	Öl.	Hl.	Km.dl.
1	1991	818.51	71,889	41,332	4,005	117,226	96.50
2	1991	823.20	72,136	40,080	3,983	116,199	96.54
3	1991	817.91	73,855	35,693	3,622	113,170	98.61
4	1991	824.59	73,779	46,639	3,649	124,067	98.05
5	1991	852.23	73,318	40,485	3,678	117,481	96.29
6	1991	908.14	74,588	37,822	9,356	121,766	96.62
7	1991	918.90	74,661	36,159	3,512	114,332	96.09
8	1991	906.32	74,815	35,961	3,498	114,274	95.55
9	1991	848.54	76,062	39,916	4,049	120,027	96.57
10	1991	852.30	75,958	40,318	3,812	120,088	95.68
11	1991	852.42	75,978	41,765	4,206	121,949	95.31
12	1991	856.46	75,510	35,952	27,290	138,752	94.82
1	1992	841.85	75,742	41,791	4,808	122,341	94.88
2	1992	842.25	75,970	39,803	4,844	120,617	94.77
3	1992	842.04	75,814	36,291	4,681	116,786	94.75
4	1992	844.78	76,145	41,635	13,104	130,884	95.17
5	1992	874.97	76,653	41,644	3,860	122,157	95.87
6	1992	927.02	75,910	38,087	4,896	118,893	94.61
7	1992	931.17	76,037	32,896	5,324	114,257	94.53
8	1992	915.73	76,172	34,275	4,220	114,667	94.70
9	1992	850.10	77,672	38,535	8,309	124,516	96.66
10	1992	837.45	77,758	39,517	5,501	122,776	96.71
11	1992	835.73	77,638	38,096	9,699	125,433	96.56
12	1992	844.91	77,390	35,629	30,469	143,488	95.75

Félag starfsmanna stjórnarráðsins

M.	Ár	Stg.	Di.	Yl.	Öl.	Hl.	Km.dl.
1	1991	255.83	73,525	28,913	926	103,364	95.60
2	1991	261.58	73,359	31,962	1,191	106,512	95.10
3	1991	264.02	75,412	30,229	1,043	106,684	97.53
4	1991	262.59	75,606	30,631	1,077	107,314	97.33
5	1991	265.26	75,495	31,111	1,394	108,000	96.03

6	1991	289,31	75,963	24,574	6,747	107,284	95,32
7	1991	280,61	75,983	22,783	1,147	99,913	94,73
8	1991	277,93	76,267	24,533	1,504	102,304	94,35
9	1991	257,77	77,830	26,934	1,246	106,010	95,71
10	1991	253,31	78,061	28,958	1,230	108,249	95,25
11	1991	254,91	78,068	30,217	2,241	110,526	94,86
12	1991	254,11	78,080	31,924	25,746	135,750	94,98
1	1992	255,49	78,469	28,808	1,130	108,407	95,22
2	1992	256,11	78,457	32,067	1,183	111,707	94,81
3	1992	255,98	78,366	28,673	1,570	108,609	94,87
4	1992	255,64	78,905	36,175	10,593	125,673	95,52
5	1992	260,10	79,294	26,676	1,919	107,889	96,06
6	1992	271,86	78,303	27,745	1,608	107,656	94,53
7	1992	270,76	78,437	25,018	1,595	105,050	94,46
8	1992	262,57	78,667	23,983	2,077	104,727	94,73
9	1992	251,35	79,184	28,507	1,907	109,598	95,45
10	1992	244,02	79,801	31,556	1,678	113,035	96,14
11	1992	243,05	79,983	34,513	2,359	116,855	96,35
12	1992	244,22	80,732	34,813	27,790	143,335	96,75

Fóstrufélag Íslands *

M.	Ár	Stg.	Di.	Yl.	Öl.	Hl.	Km.dl.
1	1991	46,91	68,857	21,201	2,258	92,316	88,68
2	1991	49,07	68,836	19,061	2,016	89,913	88,39
3	1991	45,16	70,741	18,220	3,230	92,191	90,62
4	1991	48,09	70,136	19,125	2,769	92,030	89,43
5	1991	49,38	69,957	22,188	3,100	95,245	88,14
6	1991	52,98	71,147	12,877	8,589	92,613	88,42
7	1991	54,46	71,420	11,881	3,097	86,398	88,19
8	1991	54,40	71,670	11,471	3,795	86,936	87,82
9	1991	58,13	71,867	17,363	3,620	92,850	87,54
10	1991	60,13	71,857	18,672	4,804	95,333	86,84
11	1991	61,31	71,719	16,238	4,081	92,038	86,31
12	1991	62,34	71,651	11,969	22,885	106,505	86,33
1	1992	60,95	71,744	18,382	4,728	94,854	86,23
2	1992	59,25	72,271	15,912	5,085	93,268	86,50
3	1992	59,11	72,367	16,899	4,561	93,827	86,77
4	1992	58,46	73,008	17,705	12,885	103,598	87,55
5	1992	56,61	73,048	21,413	5,145	99,606	87,65
6	1992	56,96	73,289	15,180	4,573	93,042	87,64
7	1992	56,15	73,381	12,577	4,076	90,034	87,53
8	1992	53,57	73,616	9,236	3,618	86,470	87,81
9	1992	55,39	74,468	14,296	5,194	93,958	88,91
10	1992	59,53	75,257	16,876	4,182	96,315	89,80
11	1992	59,73	75,442	18,801	5,816	100,059	90,02
12	1992	61,36	75,019	20,737	26,212	121,968	89,05

* Kaupmáttur miðast við 04/1989=100,00

Landssamband lögreglumanna

M.	Ár	Stg.	Di.	Yl.	Öl.	Hl.	Km.dl.
1	1991	621,47	73,343	62,815	26,594	162,752	91,25
2	1991	621,60	73,472	54,461	22,119	150,052	91,15
3	1991	622,12	75,675	53,740	20,432	149,847	93,65
4	1991	621,42	75,759	61,291	23,667	160,717	93,32
5	1991	665,00	74,534	59,932	20,390	154,856	90,73
6	1991	774,33	73,935	49,283	24,553	147,771	88,78
7	1991	779,18	73,968	46,309	18,028	138,905	88,24
8	1991	765,36	74,168	50,858	16,366	141,392	87,80
9	1991	709,85	75,485	49,280	20,432	145,197	88,83
10	1991	648,88	77,462	53,823	21,717	153,002	90,44
11	1991	639,00	77,531	58,222	22,775	158,528	90,15
12	1991	637,41	77,409	53,470	44,657	175,536	90,10
1	1992	627,06	79,313	63,024	29,734	172,071	92,10
2	1992	627,26	79,536	51,593	26,784	157,913	91,97
3	1992	622,44	79,696	47,828	23,680	151,204	92,32
4	1992	623,47	79,747	53,000	33,655	166,402	92,39
5	1992	647,86	80,416	56,185	26,246	162,847	93,23
6	1992	715,03	78,693	49,888	22,629	151,210	90,91
7	1992	717,44	78,925	48,123	21,889	148,937	90,95
8	1992	713,29	78,980	52,135	18,985	150,100	91,01
9	1992	661,13	80,578	51,449	22,887	154,914	92,95
10	1992	618,75	85,850	61,129	27,688	174,667	98,97
11	1992	615,88	86,030	56,651	25,792	168,473	99,18
12	1992	615,05	85,949	59,025	51,719	196,693	98,57

Ljósmeðrafélag Íslands

M.	Ár	Stg.	Di.	Yl.	Öl.	Hl.	Km.dl.
1	1991	66.81	79,758	17,472	12,669	109,899	96.44
2	1991	68.94	79,721	13,209	11,509	104,439	96.12
3	1991	68.67	81,916	32,752	12,972	127,640	98.53
4	1991	68.10	82,148	25,003	12,305	119,456	98.35
5	1991	68.24	82,228	35,637	12,214	130,079	97.28
6	1991	69.50	83,631	22,927	17,965	124,523	97.59
7	1991	66.71	84,012	21,341	9,162	114,515	97.41
8	1991	64.61	84,060	28,806	10,513	123,379	96.72
9	1991	64.20	84,588	14,845	11,793	111,226	96.74
10	1991	65.42	84,325	18,757	12,655	115,737	95.69
11	1991	64.74	84,547	17,946	12,268	114,761	95.54
12	1991	62.62	84,544	6,500	28,756	119,800	95.64
1	1992	62.02	84,543	21,456	15,680	121,679	95.41
2	1992	62.66	84,634	19,319	13,725	117,678	95.11
3	1992	61.54	85,393	15,619	14,950	115,962	96.14
4	1992	64.08	85,536	42,678	22,946	151,160	96.31
5	1992	70.16	84,932	25,581	15,638	126,151	95.69
6	1992	70.65	84,042	24,520	12,021	120,583	94.36
7	1992	69.93	84,067	11,817	9,601	105,485	94.15
8	1992	68.31	84,514	19,072	11,387	114,973	94.65
9	1992	67.93	84,922	16,307	14,379	115,608	95.21
10	1992	68.52	87,798	17,032	15,414	120,244	98.37
11	1992	68.40	87,922	11,224	15,097	114,243	98.51
12	1992	65.99	87,540	25,258	41,004	153,802	97.57

Póstmannafélag Íslands

M.	Ár	Stg.	Di.	Yl.	Öl.	Hl.	Km.dl.
1	1991	759.99	61,796	37,811	1,423	101,030	95.84
2	1991	761.63	61,856	23,572	1,525	86,953	95.65
3	1991	772.53	66,798	22,161	1,508	90,467	103.04
4	1991	755.57	63,582	21,749	1,361	86,692	97.63
5	1991	801.83	61,561	23,870	1,615	87,046	93.41
6	1991	974.51	60,841	16,948	6,147	83,936	91.06
7	1991	988.13	60,667	14,342	1,143	76,152	90.21
8	1991	955.62	61,095	17,321	1,523	79,939	90.15
9	1991	763.58	63,978	20,395	1,673	86,046	93.84
10	1991	773.78	65,482	24,778	1,730	91,990	95.30
11	1991	772.71	65,544	22,815	1,434	89,793	94.99
12	1991	928.63	64,230	22,974	19,937	107,141	93.19
1	1992	794.40	65,586	35,715	1,630	102,931	94.93
2	1992	792.00	65,546	23,781	1,767	91,094	94.47
3	1992	798.30	68,908	19,140	1,661	89,709	99.50
4	1992	780.89	66,007	20,120	10,765	96,892	95.31
5	1992	819.25	64,708	22,182	1,643	88,533	93.50
6	1992	1,011.70	61,945	15,135	1,130	78,210	89.20
7	1992	1,034.70	61,954	16,160	1,329	79,443	88.99
8	1992	998.94	62,432	15,969	1,276	79,677	89.68
9	1992	790.64	65,815	22,047	1,735	89,597	94.63
10	1992	790.41	67,485	25,653	1,958	95,096	96.97
11	1992	796.95	67,396	24,320	3,347	95,063	96.84
12	1992	851.19	67,004	26,486	23,792	117,282	95.78

Sjúkraliðafélag Íslands *

M.	Ár	Stg.	Di.	Yl.	Öl.	Hl.	Km.dl.
1	1992	242.52	65,356	17,308	14,631	97,295	100.00
2	1992	246.95	65,211	11,895	13,790	90,896	99.36
3	1992	247.50	65,177	13,108	14,886	93,171	99.49
4	1992	249.35	65,400	29,679	20,598	115,677	99.84
5	1992	259.62	65,309	18,680	14,769	98,758	99.77
6	1992	267.76	65,608	17,854	11,632	95,094	99.87
7	1992	268.50	65,479	8,838	9,862	84,179	99.43
8	1992	262.05	66,079	12,188	10,524	88,791	100.34
9	1992	253.00	65,623	10,355	12,667	88,645	99.75
10	1992	257.57	69,028	13,680	14,191	96,899	104.86
11	1992	259.69	69,265	13,446	14,831	97,542	105.22
12	1992	239.80	69,337	22,843	39,630	131,810	104.78

* Kaupmáttur miðast við 01/1992=100.00

Starfsmannafélag ríkisútvarpsins

M.	Ár	Stg.	Di.	Yl.	Öl.	Hl.	Km.dl.
1	1991	99.83	71,174	29,207	2,817	103,198	94.10
2	1991	93.99	71,654	27,550	3,666	102,870	94.46

3	1991	93.16	74,054	25,279	2,812	102,145	97.39
4	1991	94.65	73,788	29,406	2,861	106,055	96.59
5	1991	96.51	73,419	28,640	2,927	104,986	94.97
6	1991	106.81	74,228	24,277	8,134	106,639	94.71
7	1991	111.62	73,331	20,588	2,498	96,417	92.96
8	1991	111.52	73,825	21,154	2,820	97,799	92.87
9	1991	98.71	75,501	21,479	3,499	100,479	94.41
10	1991	96.95	75,900	21,658	3,236	100,794	94.17
11	1991	94.30	75,937	25,505	3,554	104,996	93.82
12	1991	97.20	75,567	25,406	24,606	125,579	93.47
1	1992	97.34	76,025	29,315	4,147	109,487	93.81
2	1992	95.36	75,978	25,366	4,328	105,672	93.36
3	1992	96.75	76,026	23,144	4,112	103,282	93.59
4	1992	95.86	76,010	25,329	12,445	113,784	93.57
5	1992	99.92	77,379	31,243	3,330	111,952	95.32
6	1992	106.77	76,465	22,022	3,695	102,182	93.87
7	1992	108.31	75,827	19,440	3,485	98,752	92.85
8	1992	105.32	76,442	17,988	3,638	98,068	93.61
9	1992	96.48	77,937	24,152	4,068	106,157	95.53
10	1992	94.78	77,433	26,897	4,334	108,664	94.86
11	1992	94.70	77,351	27,935	5,103	110,389	94.76
12	1992	96.21	77,918	26,518	26,816	131,252	94.95

Starfsmannafélag sjónvarpsins

M.	Ár	Stg.	Di.	Yl.	Öl.	Hl.	Km.dl.
1	1991	92.00	73,379	46,000	4,526	123,905	98.14
2	1991	90.74	73,574	58,313	5,634	137,521	98.11
3	1991	89.17	75,634	43,461	5,174	124,269	100.62
4	1991	90.69	75,779	56,667	4,496	136,942	100.34
5	1991	92.58	76,385	57,805	4,805	138,995	99.95
6	1991	102.27	77,582	48,040	10,560	136,182	100.14
7	1991	105.34	77,253	38,927	4,484	120,664	99.07
8	1991	104.53	77,586	31,375	4,703	113,664	98.73
9	1991	94.67	78,878	48,145	4,891	131,914	99.78
10	1991	98.60	78,995	50,823	4,923	134,741	99.15
11	1991	98.81	78,960	43,351	6,940	129,251	98.69
12	1991	98.84	78,976	44,340	26,772	150,088	98.82
1	1992	95.87	79,522	46,597	5,764	131,883	99.26
2	1992	95.28	79,475	48,097	6,884	134,456	98.79
3	1992	96.52	79,515	47,602	6,083	133,200	99.01
4	1992	96.45	79,631	55,929	14,080	149,640	99.16
5	1992	97.49	80,827	53,003	5,210	139,040	100.73
6	1992	103.69	79,832	42,888	6,086	128,806	99.14
7	1992	109.26	79,587	37,758	5,668	123,013	98.59
8	1992	108.62	79,431	39,882	5,975	125,288	98.39
9	1992	101.59	80,547	47,451	5,991	133,989	99.88
10	1992	98.52	81,010	45,474	7,100	133,584	100.39
11	1992	96.08	81,470	47,328	7,177	135,975	100.96
12	1992	95.77	81,683	58,245	32,889	172,817	100.70

Starfsmannafélag ríkisstofnana, tæknihópur

M.	Ár	Stg.	Di.	Yl.	Öl.	Hl.	Km.dl.
1	1991	1,250.74	66,064	36,311	5,060	107,435	94.14
2	1991	1,234.51	66,251	36,382	4,433	107,066	94.13
3	1991	1,247.14	68,070	35,727	4,837	108,634	96.48
4	1991	1,253.44	68,134	40,147	5,667	113,948	96.13
5	1991	1,334.02	67,311	39,287	6,197	112,795	93.84
6	1991	1,552.43	67,205	35,563	10,544	113,312	92.42
7	1991	1,581.86	67,155	33,106	3,564	103,825	91.76
8	1991	1,514.81	67,645	32,051	3,575	103,271	91.72
9	1991	1,319.05	69,714	38,077	4,440	112,231	93.96
10	1991	1,292.15	70,020	35,395	5,492	110,907	93.64
11	1991	1,289.97	70,032	42,632	6,703	119,367	93.26
12	1991	1,266.27	70,119	29,924	27,517	127,560	93.48
1	1992	1,252.40	71,386	33,656	5,979	111,021	94.94
2	1992	1,281.00	71,752	38,028	5,259	115,039	95.03
3	1992	1,259.70	72,309	33,437	5,396	111,142	95.94
4	1992	1,263.10	72,894	34,874	13,767	121,535	96.72
5	1992	1,336.40	72,140	37,266	5,385	114,791	95.79
6	1992	1,511.40	70,610	34,389	4,651	109,650	93.43
7	1992	1,554.90	68,807	31,188	3,921	103,916	90.81
8	1992	1,503.40	69,390	31,283	4,337	105,010	91.58
9	1992	1,322.40	71,078	35,652	4,861	111,591	93.91
10	1992	1,284.30	72,219	37,248	5,048	114,515	95.35

11	1992	1,277.10	73,129	38,566	6,507	118,202	96.55
12	1992	1,278.00	73,733	35,382	28,872	137,987	96.85

Starfsmannafélag ríkisstofnana, skrifstofuhópur

M.	Ár	Stg.	Di.	Yl.	Öl.	Hl.	Km.dl.
1	1991	1,510.79	67,973	21,113	505	89,591	96.40
2	1991	1,520.34	67,998	23,519	505	92,022	96.15
3	1991	1,536.67	69,956	23,141	557	93,654	98.69
4	1991	1,560.91	69,886	23,813	660	94,359	98.13
5	1991	1,643.51	69,279	24,103	744	94,126	96.13
6	1991	1,815.13	69,650	22,406	6,237	98,293	95.33
7	1991	1,834.48	69,628	19,674	561	89,863	94.68
8	1991	1,774.26	70,192	18,618	799	89,609	94.72
9	1991	1,614.24	71,763	22,533	819	95,115	96.26
10	1991	1,575.49	72,006	23,313	809	96,128	95.83
11	1991	1,579.43	72,063	26,858	603	99,524	95.51
12	1991	1,567.31	72,088	19,793	23,258	115,139	95.65
1	1992	1,544.00	72,311	22,511	1,104	95,926	95.71
2	1992	1,540.40	72,434	24,093	633	97,160	95.47
3	1992	1,539.80	72,488	22,331	728	95,547	95.72
4	1992	1,537.80	73,365	24,259	9,946	107,570	96.88
5	1992	1,581.90	73,469	23,052	940	97,461	97.09
6	1992	1,701.60	72,418	22,797	798	96,013	95.36
7	1992	1,748.90	72,114	21,107	630	93,851	94.73
8	1992	1,737.70	72,274	18,278	797	91,349	94.94
9	1992	1,581.60	73,920	21,921	1,021	96,862	97.20
10	1992	1,546.10	74,286	23,528	754	98,568	97.62
11	1992	1,538.20	74,483	24,579	2,286	101,348	97.88
12	1992	1,543.30	74,444	24,187	24,359	122,990	97.32

Starfsmannafélag ríkisstofnana, heilbrigðishópur

M.	Ár	Stg.	Di.	Yl.	Öl.	Hl.	Km.dl.
1	1991	947.56	61,799	21,551	9,952	93,302	92.76
2	1991	948.17	61,671	16,402	9,784	87,857	92.29
3	1991	954.11	63,400	22,210	9,989	95,599	94.65
4	1991	960.19	63,358	24,701	10,088	98,147	94.15
5	1991	971.33	63,334	24,576	9,977	97,887	93.00
6	1991	1,123.65	64,188	17,057	14,186	95,431	92.98
7	1991	1,143.93	64,281	15,441	8,380	88,102	92.51
8	1991	1,079.75	64,489	16,960	9,036	90,485	92.10
9	1991	997.56	65,272	16,689	9,576	91,537	92.66
10	1991	997.70	65,187	15,319	8,929	89,435	91.82
11	1991	937.40	65,253	15,678	8,091	89,022	91.53
12	1991	769.99	65,025	12,824	26,902	104,751	91.31
1	1992	766.82	65,393	22,420	11,181	98,994	91.60
2	1992	772.47	65,261	15,695	10,898	91,854	91.04
3	1992	779.16	65,270	14,226	10,381	89,877	91.21
4	1992	773.54	65,884	17,505	19,213	102,602	92.08
5	1992	783.77	66,336	23,752	10,377	100,465	92.77
6	1992	896.00	65,492	17,430	9,395	92,317	91.27
7	1992	935.17	65,429	13,280	8,651	87,360	90.96
8	1992	899.42	65,808	13,194	9,659	88,661	91.48
9	1992	780.08	67,046	14,067	10,327	91,440	93.30
10	1992	767.92	67,441	15,980	11,196	94,617	93.79
11	1992	772.78	67,302	16,182	12,354	95,838	93.60
12	1992	764.60	67,430	18,832	32,514	118,776	93.29

Starfsmannafélag ríkisstofnana, alls

M.	Ár	Stg.	Di.	Yl.	Öl.	Hl.	Km.dl.
1	1991	3,709.09	65,752	26,350	4,454	96,556	94.63
2	1991	3,703.02	65,796	25,985	4,190	95,971	94.41
3	1991	3,737.92	67,653	27,103	4,393	99,149	96.85
4	1991	3,774.54	67,644	29,463	4,721	101,828	96.39
5	1991	3,948.86	67,152	29,349	4,857	101,358	94.55
6	1991	4,491.21	67,438	25,616	9,715	102,769	93.67
7	1991	4,560.27	67,429	23,271	3,564	94,264	93.05
8	1991	4,368.82	67,899	22,866	3,797	94,562	92.98
9	1991	3,930.85	69,428	26,266	4,256	99,950	94.51
10	1991	3,865.34	69,582	25,289	4,470	99,341	93.98
11	1991	3,806.80	69,698	29,450	4,514	103,662	93.74
12	1991	3,603.57	69,887	21,864	25,533	117,284	94.10
1	1992	3,563.22	70,497	26,409	4,986	101,892	94.69
2	1992	3,593.87	70,649	27,255	4,488	102,392	94.50
3	1992	3,578.66	70,853	24,476	4,473	99,802	94.94

4	1992	3,574.44	71,580	26,548	13,302	111,430	95.92
5	1992	3,702.07	71,479	28,331	4,543	104,353	95.85
6	1992	4,109.00	70,243	25,891	4,090	100,224	93.86
7	1992	4,238.97	69,426	23,078	3,607	96,111	92.54
8	1992	4,140.52	69,822	21,896	4,007	95,725	93.07
9	1992	3,684.08	71,444	25,187	4,370	101,001	95.33
10	1992	3,598.32	72,087	26,814	4,515	103,416	96.13
11	1992	3,588.08	72,454	27,749	5,957	106,160	96.62
12	1992	3,585.90	72,695	27,035	27,706	127,436	96.43

Tollvarðafélag Íslands

M.	Ár	Stg.	DI.	YI.	ÖI.	HI.	Km.dl.
1	1991	116.42	76,219	59,972	6,861	143,052	91.10
2	1991	115.68	76,362	49,640	7,399	133,401	91.00
3	1991	117.86	78,012	42,699	6,574	127,285	92.75
4	1991	118.04	78,353	61,679	6,586	146,618	92.72
5	1991	123.80	77,808	50,015	7,082	134,905	90.99
6	1991	138.47	77,069	42,737	12,181	131,987	88.90
7	1991	141.38	77,055	39,924	7,274	124,253	88.31
8	1991	136.09	77,959	43,781	8,296	130,036	88.66
9	1991	123.05	79,786	44,695	7,717	132,198	90.20
10	1991	113.49	81,501	50,845	7,815	140,161	91.42
11	1991	114.39	81,358	49,716	7,909	138,983	90.87
12	1991	113.55	81,426	39,657	31,968	153,051	91.05
1	1992	111.21	81,807	60,741	9,181	151,729	91.25
2	1992	111.38	82,157	44,633	9,694	136,484	91.26
3	1992	111.38	82,091	39,261	8,812	130,164	91.35
4	1992	111.80	81,947	38,466	16,797	137,210	91.20
5	1992	115.56	82,913	55,039	6,414	144,366	92.34
6	1992	126.31	81,131	42,715	6,902	130,748	90.04
7	1992	128.50	80,730	42,220	8,275	131,225	89.37
8	1992	126.60	80,947	36,799	8,557	126,303	89.61
9	1992	114.12	83,090	47,492	9,170	139,752	92.08
10	1992	108.50	84,349	45,961	9,698	140,008	93.41
11	1992	109.46	84,833	43,473	8,915	137,221	93.95
12	1992	108.61	84,758	40,767	33,267	158,792	93.38

BSRB félögin hjá ríkinu, alls

M.	Ár	Stg.	DI.	YI.	ÖI.	HI.	Km.dl.
1	1991	6,698.56	67,601	34,059	6,209	107,869	92.28
2	1991	6,703.49	67,682	31,327	5,650	104,659	92.12
3	1991	6,744.22	69,904	30,975	5,537	106,416	94.92
4	1991	6,786.82	69,506	34,712	6,014	110,232	93.94
5	1991	7,092.57	68,807	34,083	5,881	108,771	91.89
6	1991	8,044.20	68,937	29,007	10,780	108,724	90.82
7	1991	8,148.22	68,889	26,543	4,778	100,210	90.17
8	1991	7,885.27	69,317	27,232	4,874	101,423	90.03
9	1991	7,084.16	71,072	30,303	5,691	107,066	91.76
10	1991	6,960.37	71,498	30,768	5,829	108,095	91.59
11	1991	6,890.67	71,589	33,416	6,027	111,032	91.33
12	1991	6,843.78	71,350	27,644	27,040	126,034	91.12
1	1992	6,879.95	71,979	33,562	7,403	112,944	91.70
2	1992	6,910.23	72,098	30,861	6,828	109,787	91.47
3	1992	6,896.84	72,587	27,959	6,515	107,061	92.25
4	1992	6,880.15	72,734	31,530	15,295	119,559	92.45
5	1992	7,129.00	72,727	32,429	6,689	111,845	92.50
6	1992	7,891.24	71,270	28,624	5,923	105,817	90.33
7	1992	8,059.34	70,832	25,784	5,555	102,171	89.55
8	1992	7,879.31	71,200	25,827	5,483	102,510	90.02
9	1992	7,042.65	73,059	29,316	6,830	109,205	92.46
10	1992	6,890.46	74,225	31,733	7,040	112,998	93.88
11	1992	6,876.77	74,434	31,525	8,367	114,326	94.14
12	1992	6,921.73	74,461	31,876	30,503	136,840	93.69

BHMR ríkisstarfsmenn, mánaðartölur:**BHMR hópur 1 (HÍK/G)**

M.	Ár	Stg.	DI.	YI.	ÖI.	HI.	Km.dl.
1	1991	232.77	80,862	34,201	1,184	116,247	94.76
2	1991	230.89	81,232	35,695	940	117,867	94.92
3	1991	227.37	83,347	40,135	1,071	124,553	97.16
4	1991	228.58	83,610	39,004	1,109	123,723	97.01

5	1991	230.85	83,564	37,086	2,914	123,564	95.81
6	1991	227.76	85,512	3,082	6,926	95,520	96.71
7	1991	225.78	85,877	3,456	224	89,557	96.50
8	1991	231.18	85,588	5,456	160	91,204	95.44
9	1991	214.41	85,512	32,044	491	118,047	94.78
10	1991	202.59	85,771	37,832	833	124,436	94.33
11	1991	200.39	85,993	39,408	1,332	126,733	94.18
12	1991	195.76	85,817	36,435	25,659	147,911	94.09
1	1992	197.72	86,178	36,660	733	123,571	94.25
2	1992	196.33	86,290	38,086	922	125,298	93.98
3	1992	195.24	86,251	39,029	876	126,156	94.11
4	1992	195.09	86,734	39,317	8,596	134,647	94.64
5	1992	193.98	88,258	39,186	3,080	130,524	96.37
6	1992	193.67	88,305	3,183	666	92,154	96.09
7	1992	192.87	88,659	3,641	481	92,781	96.23
8	1992	190.61	89,071	4,679	599	94,349	96.68
9	1992	188.40	88,664	30,427	300	119,391	96.34
10	1992	183.28	88,721	34,480	577	123,778	96.34
11	1992	181.09	88,652	34,985	502	124,139	96.26
12	1992	176.17	88,459	34,647	26,615	149,721	95.55

BHMR hópur 2 (HÍK/F)

M.	Ár	Stg.	Dl.	Yl.	Öl.	Hl.	Km.dl.
1	1991	905.16	84,915	51,909	164	136,988	90.08
2	1991	895.95	85,084	49,631	356	135,071	89.99
3	1991	893.51	87,549	48,913	283	136,745	92.38
4	1991	896.18	87,551	49,433	510	137,494	91.95
5	1991	894.63	87,464	55,523	1,765	144,752	90.78
6	1991	894.00	89,816	10,162	6,525	106,503	91.95
7	1991	874.80	90,247	4,635	283	95,165	91.79
8	1991	924.50	89,921	8,660	159	98,740	90.76
9	1991	918.56	89,665	51,605	435	141,705	89.96
10	1991	912.39	89,696	51,295	394	141,385	89.29
11	1991	912.12	89,700	53,819	934	144,453	88.92
12	1991	913.61	89,718	53,246	24,587	167,551	89.04
1	1992	924.42	89,690	51,818	509	142,017	88.79
2	1992	907.20	89,899	46,524	267	136,690	88.63
3	1992	905.15	89,943	48,707	663	139,313	88.83
4	1992	904.07	90,124	47,737	8,445	146,306	89.02
5	1992	904.39	91,566	59,275	1,811	152,652	90.51
6	1992	903.16	91,633	8,807	466	100,906	90.25
7	1992	885.54	92,014	4,216	242	96,472	90.41
8	1992	912.82	92,232	6,628	92	98,952	90.62
9	1992	905.78	92,311	48,277	727	141,315	90.79
10	1992	903.27	92,403	47,149	510	140,062	90.82
11	1992	902.54	92,494	47,838	827	141,159	90.91
12	1992	899.43	92,528	54,197	26,829	173,554	90.47

BHMR hópur 3 (FH,FHA,KKHÍ,FTK) *

M.	Ár	Stg.	Dl.	Yl.	Öl.	Hl.	Km.dl.
1	1991	516.81	103,270	35,266	872	139,408	87.47
2	1991	515.35	102,177	48,861	1,796	152,834	86.29
3	1991	520.30	105,358	48,994	1,387	155,739	88.77
4	1991	550.64	104,766	60,636	500	165,902	87.86
5	1991	569.48	104,311	51,373	2,465	158,149	86.44
6	1991	603.24	106,076	34,702	6,108	146,886	86.71
7	1991	618.78	104,798	34,161	186	139,145	85.11
8	1991	621.37	104,848	38,289	1,275	144,412	84.50
9	1991	616.73	105,540	46,999	517	153,056	84.55
10	1991	615.54	105,555	45,057	2,677	153,289	83.90
11	1991	630.76	105,936	42,724	1,773	150,433	83.86
12	1991	616.55	106,037	34,299	22,927	163,263	84.03
1	1992	613.56	106,055	41,958	1,088	149,101	83.84
2	1992	614.90	105,920	42,498	999	149,417	83.38
3	1992	623.51	105,800	85,312	1,770	192,882	83.44
4	1992	628.35	106,600	78,795	8,231	193,626	84.07
5	1992	635.49	107,479	96,722	4,211	208,412	84.83
6	1992	653.46	107,310	40,457	2,792	150,559	84.40
7	1992	640.15	107,675	37,896	1,685	147,256	84.47
8	1992	639.99	108,078	42,045	1,279	151,402	84.79
9	1992	630.75	108,327	41,714	1,204	151,245	85.07
10	1992	629.17	108,434	42,333	1,053	151,820	85.10
11	1992	633.97	108,278	44,778	1,900	154,956	84.98
12	1992	636.09	108,719	44,186	25,962	178,867	84.88

* Félag háskóla kennara á Akureyri kemur inn í hópinn fyrri hluta ársins 1992.

BHMR hópur 4 (FH,SSR,KFI,SÍ,MTÍ,RTÍ) *

M.	Ár	Stg.	Di.	Yl.	Öl.	Hl.	Km.dl.
1	1991	332.11	79,381	27,221	8,871	115,473	79.42
2	1991	334.79	79,671	25,444	7,231	112,346	79.48
3	1991	333.02	81,841	34,063	9,294	125,198	81.45
4	1991	331.59	81,884	32,852	8,755	123,491	81.11
5	1991	326.77	82,083	35,577	9,194	126,854	80.35
6	1991	341.17	84,114	28,656	14,544	127,314	81.22
7	1991	354.03	84,359	29,729	7,862	121,950	80.93
8	1991	347.80	84,655	29,433	8,096	122,184	80.59
9	1991	349.59	84,312	28,222	8,568	121,102	79.78
10	1991	352.71	84,231	29,112	9,008	122,351	79.08
11	1991	352.50	84,290	29,893	8,777	122,960	78.81
12	1991	350.62	84,466	11,214	24,844	120,524	79.06
1	1992	370.82	84,590	30,821	9,660	125,071	78.98
2	1992	373.56	84,737	27,132	8,973	120,842	78.79
3	1992	375.13	84,574	25,843	9,413	119,830	78.78
4	1992	370.64	85,289	32,869	17,264	135,422	79.45
5	1992	374.71	86,227	28,270	10,183	124,680	80.38
6	1992	382.20	86,294	29,348	9,209	124,851	80.16
7	1992	387.77	86,272	24,427	8,166	118,865	79.94
8	1992	382.64	86,548	27,129	9,629	123,306	80.20
9	1992	375.34	86,115	25,875	8,821	120,811	79.88
10	1992	372.28	86,202	27,373	9,441	123,016	79.91
11	1992	373.11	86,402	26,986	9,306	122,694	80.10
12	1992	374.16	86,447	28,979	34,161	149,587	79.72

* Röntgentæknafélag Íslands kemur inn í hópinn í ársbyrjun 1992.

BHMR hópur 5 (L,É,Ð,Í,SSÍ,ÞÍ*)

M.	Ár	Stg.	Di.	Yl.	Öl.	Hl.	Km.dl.
1	1991	347.86	90,749	18,864	14,770	124,383	87.07
2	1991	465.01	89,126	14,684	10,812	114,622	85.26
3	1991	355.49	92,974	19,516	14,715	127,205	88.73
4	1991	354.62	92,865	20,889	15,889	129,643	88.21
5	1991	351.94	92,929	21,109	16,161	130,199	87.23
6	1991	370.68	94,170	19,795	20,124	134,089	87.19
7	1991	462.54	92,351	14,235	11,822	118,408	84.96
8	1991	383.90	93,315	16,730	14,203	124,248	85.19
9	1991	364.27	94,425	18,161	14,851	127,437	85.68
10	1991	355.97	94,689	19,564	17,590	131,843	85.25
11	1991	352.83	94,872	19,103	15,713	129,688	85.06
12	1991	351.32	94,982	17,992	31,397	144,371	85.25
1	1992	344.90	95,050	19,433	19,155	133,638	85.11
2	1992	460.15	93,455	14,819	13,148	121,422	83.33
3	1992	347.93	94,928	20,722	18,185	133,835	84.80
4	1992	348.62	95,432	20,066	25,519	141,017	85.25
5	1992	357.59	95,617	21,113	17,052	133,782	85.48
6	1992	363.17	95,396	19,730	16,453	131,579	84.98
7	1992	320.05	93,345	18,487	12,947	124,779	82.95
8	1992	245.50	94,474	22,807	16,455	133,736	83.95
9	1992	234.48	96,146	25,731	17,773	139,650	85.52
10	1992	234.08	96,589	27,000	18,130	141,719	85.86
11	1992	230.25	96,961	31,121	18,044	146,126	86.19
12	1992	228.72	96,812	29,312	45,167	171,291	85.61

* Prestafélag Íslands fer út úr hópnum seinni part ársins 1992.

BHMR hópur 6 (KVH,KFÍ,SLÍR,FHSS)

M.	Ár	Stg.	Di.	Yl.	Öl.	Hl.	Km.dl.
1	1991	428.82	93,841	52,594	4,638	151,073	85.75
2	1991	429.87	93,877	60,277	3,421	157,575	85.53
3	1991	432.77	96,401	57,462	3,536	157,399	87.62
4	1991	432.98	96,583	60,076	4,188	160,847	87.38
5	1991	434.30	96,756	59,549	4,100	160,405	86.50
6	1991	442.79	98,921	57,686	10,483	167,090	87.23
7	1991	448.04	99,037	51,787	4,281	155,105	86.77
8	1991	448.58	99,119	47,609	4,326	151,054	86.18
9	1991	447.63	99,728	57,983	3,984	161,695	86.19
10	1991	447.77	99,682	60,018	5,262	164,962	85.48
11	1991	445.64	99,769	66,083	5,292	171,144	85.20
12	1991	446.67	99,756	56,668	29,832	186,256	85.28
1	1992	442.06	100,259	59,173	6,760	166,192	85.50
2	1992	445.80	100,157	62,201	5,739	168,097	85.06

3	1992	444.47	100,373	59,716	6,747	166,836	85.39
4	1992	442.79	100,646	63,559	13,370	177,575	85.63
5	1992	436.41	102,194	64,849	6,803	173,846	87.01
6	1992	446.36	102,085	60,862	7,397	170,344	86.61
7	1992	452.44	102,859	56,371	4,984	164,214	87.05
8	1992	457.04	102,735	50,862	5,367	158,964	86.95
9	1992	452.17	103,149	59,914	4,977	168,040	87.39
10	1992	454.78	103,278	63,977	6,204	173,459	87.44
11	1992	465.20	103,039	62,592	6,393	172,024	87.24
12	1992	466.44	102,846	63,475	30,097	196,418	86.62

BHMR hópur 7 (KA,FÍN,SMN,FF)

M.	Ar	Stg.	Di.	Yl.	Öl.	Hl.	Km.dl.
1	1991	433.95	93,438	44,266	2,085	139,789	92.05
2	1991	434.27	93,264	53,903	2,387	149,554	91.61
3	1991	438.70	96,039	50,971	2,606	149,616	94.11
4	1991	445.45	95,935	55,619	2,319	153,873	93.57
5	1991	452.45	96,178	55,612	2,610	154,400	92.70
6	1991	485.11	97,344	51,776	8,046	157,166	92.54
7	1991	515.45	96,693	46,502	2,201	145,396	91.33
8	1991	502.60	97,043	52,728	2,173	151,944	90.96
9	1991	479.83	98,372	52,037	2,229	152,638	91.66
10	1991	475.87	98,636	53,921	2,265	154,822	91.19
11	1991	471.98	98,662	53,198	2,720	154,580	90.83
12	1991	470.61	98,808	42,729	26,375	167,912	91.06
1	1992	483.17	98,628	44,110	2,607	145,345	90.68
2	1992	468.15	98,596	47,418	2,886	148,900	90.27
3	1992	490.07	98,474	52,038	3,784	154,296	90.32
4	1992	488.85	98,618	53,135	10,325	162,078	90.46
5	1992	504.67	99,795	52,549	2,805	155,149	91.60
6	1992	527.18	98,950	48,571	2,707	150,228	90.51
7	1992	535.62	98,794	49,480	2,680	150,954	90.14
8	1992	525.52	99,257	50,125	2,877	152,259	90.56
9	1992	504.71	100,054	51,461	2,772	154,287	91.38
10	1992	506.85	100,298	51,240	2,845	154,383	91.55
11	1992	510.73	100,091	47,886	2,781	150,758	91.36
12	1992	514.07	100,194	50,581	27,275	178,050	90.98

BHMR hópur 8 (FB,FÍR,ÚTG)

M.	Ar	Stg.	Di.	Yl.	Öl.	Hl.	Km.dl.
1	1991	259.63	85,939	28,882	955	115,776	86.24
2	1991	260.08	86,091	32,156	946	119,193	86.14
3	1991	262.20	88,559	29,745	1,088	119,392	88.40
4	1991	266.10	88,464	30,450	931	119,845	87.90
5	1991	267.32	88,554	32,787	1,996	123,337	86.95
6	1991	270.52	90,734	31,620	7,670	130,024	87.87
7	1991	274.74	90,935	26,970	1,130	119,035	87.50
8	1991	268.75	91,200	27,977	1,299	120,476	87.08
9	1991	259.94	91,525	33,680	1,073	126,278	86.87
10	1991	260.94	91,470	33,563	2,073	127,106	86.14
11	1991	267.11	91,300	34,477	1,873	127,650	85.62
12	1991	269.95	91,273	29,835	24,897	146,005	85.69
1	1992	277.76	91,581	29,855	2,147	123,583	85.77
2	1992	278.66	91,674	33,772	1,985	127,431	85.50
3	1992	282.61	91,602	31,018	1,392	124,012	85.59
4	1992	277.07	92,431	34,398	8,168	134,997	86.37
5	1992	270.32	92,820	33,022	3,086	128,928	86.79
6	1992	279.99	92,406	34,561	2,563	129,530	86.10
7	1992	275.33	92,925	29,415	1,362	123,702	86.37
8	1992	275.67	92,624	29,040	1,287	122,951	86.09
9	1992	279.39	92,453	31,766	1,847	126,066	86.02
10	1992	277.12	92,393	32,856	1,393	126,642	85.91
11	1992	274.82	92,387	32,799	2,260	127,446	85.90
12	1992	275.41	92,429	34,088	27,116	153,633	85.50

BHMR félögin hjá ríkinu, alls

M.	Ar	Stg.	Di.	Yl.	Öl.	Hl.	Km.dl.
1	1991	3,490.11	89,871	39,576	3,467	132,914	88.77
2	1991	3,567.21	89,457	42,331	3,270	135,058	88.10
3	1991	3,464.36	92,219	43,769	3,609	139,597	90.60
4	1991	3,506.14	92,249	46,717	3,599	142,565	90.21
5	1991	3,527.74	92,319	47,150	4,491	143,960	89.21
6	1991	3,635.27	94,335	29,447	9,390	133,172	89.92
7	1991	3,774.16	94,051	25,877	3,187	123,115	89.07

8	1991	3,728.68	94,157	28,185	3,386	125,728	88.49
9	1991	3,650.96	94,576	43,665	3,386	141,627	88.35
10	1991	3,623.78	94,665	44,352	4,302	143,319	87.75
11	1991	3,633.33	94,808	45,407	4,133	144,348	87.51
12	1991	3,615.09	94,832	38,907	25,953	159,692	87.63
1	1992	3,654.41	94,840	42,357	4,465	141,662	87.42
2	1992	3,744.75	94,703	40,619	3,979	139,301	86.94
3	1992	3,664.11	94,902	49,839	4,634	149,375	87.27
4	1992	3,655.48	95,377	50,107	11,766	157,250	87.72
5	1992	3,677.56	96,474	55,625	5,450	157,549	88.79
6	1992	3,749.19	96,345	30,897	4,619	131,861	88.36
7	1992	3,689.77	96,450	28,237	3,458	128,145	88.24
8	1992	3,629.79	96,782	29,595	3,598	129,975	88.54
9	1992	3,571.02	97,026	42,973	3,674	143,673	88.85
10	1992	3,560.83	97,185	43,873	3,830	144,888	88.94
11	1992	3,571.71	97,204	44,159	4,111	145,474	88.96
12	1992	3,570.49	97,293	46,352	29,120	172,765	88.58

Kennarasamband Íslands, mánaðartölur:

Kennarasamband Íslands, grunnskólar

M.	Ár	Stg.	Di.	Yl.	Öl.	Hl.	Km.dl.
1	1991	2,855.99	78,523	26,975	220	105,718	91.54
2	1991	2,856.93	78,522	28,661	183	107,366	91.27
3	1991	2,853.47	80,764	31,349	210	112,323	93.65
4	1991	2,851.53	80,778	30,349	220	111,347	93.23
5	1991	2,845.47	80,792	27,739	467	108,998	92.15
6	1991	2,842.08	82,944	2,296	6,493	91,733	93.32
7	1991	2,806.37	83,495	2,362	142	85,999	93.33
8	1991	2,913.26	83,321	2,582	145	86,048	92.42
9	1991	2,891.70	83,351	25,062	217	108,630	91.90
10	1991	2,916.68	83,263	29,105	299	112,667	91.09
11	1991	2,913.26	83,279	29,857	285	113,421	90.73
12	1991	2,910.70	83,241	29,105	24,575	136,921	90.79
1	1992	2,927.00	83,288	28,581	260	112,129	90.62
2	1992	2,922.70	83,267	29,401	240	112,908	90.22
3	1992	2,923.90	83,276	29,939	256	113,471	90.39
4	1992	2,919.80	83,935	31,166	8,180	123,281	91.11
5	1992	2,915.00	84,765	29,348	568	114,681	92.07
6	1992	2,911.90	84,800	2,449	147	87,396	91.79
7	1992	2,881.00	85,250	2,070	114	87,434	92.05
8	1992	2,964.00	85,632	2,319	172	88,123	92.46
9	1992	2,874.40	85,477	23,979	285	109,741	92.39
10	1992	2,878.80	85,475	27,492	216	113,183	92.33
11	1992	2,887.40	85,513	27,698	465	113,676	92.37
12	1992	2,890.10	85,502	27,331	25,404	138,237	91.88

Kennarasamband Íslands, framhaldsskólar

M.	Ár	Stg.	Di.	Yl.	Öl.	Hl.	Km.dl.
1	1991	310.94	81,020	39,476	123	120,619	90.10
2	1991	305.69	81,124	39,035	303	120,462	89.95
3	1991	305.87	83,343	38,819	279	122,441	92.19
4	1991	304.00	83,366	40,467	473	124,306	91.79
5	1991	299.92	83,521	41,464	336	125,321	90.87
6	1991	293.33	85,816	9,173	6,565	101,554	92.10
7	1991	287.31	86,226	2,572	57	88,855	91.94
8	1991	297.95	85,752	9,750	20	95,522	90.74
9	1991	313.55	85,832	41,949	229	128,010	90.28
10	1991	317.52	85,692	43,914	416	130,022	89.43
11	1991	315.00	85,729	46,309	577	132,615	89.09
12	1991	315.22	85,757	44,438	22,034	152,229	89.22
1	1992	332.04	85,620	41,013	238	126,871	88.86
2	1992	331.02	85,672	37,756	188	123,616	88.54
3	1992	319.34	85,765	39,886	396	126,047	88.80
4	1992	320.08	86,609	38,939	7,751	133,299	89.68
5	1992	314.79	87,473	45,756	346	133,575	90.64
6	1992	311.18	87,627	4,710	145	92,482	90.48
7	1992	306.98	87,933	3,643	362	91,938	90.57
8	1992	303.44	89,213	3,896	117	93,226	91.89
9	1992	298.00	89,318	43,122	617	133,057	92.09
10	1992	301.72	89,129	43,324	653	133,106	91.83
11	1992	294.33	89,285	45,223	1,214	135,722	92.00

12	1992	296.53	89,154	47,262	25,410	161,826	91.38
----	------	--------	--------	--------	--------	---------	-------

Kennarasamband Íslands, alls

M.	Ár	Stg.	Di.	Yl.	Öl.	Hl.	Km.dl.
1	1991	3,166.93	78,768	28,202	210	107,180	91.40
2	1991	3,162.62	78,774	29,664	195	108,633	91.14
3	1991	3,159.34	81,014	32,072	217	113,303	93.50
4	1991	3,155.53	81,027	31,324	244	112,595	93.09
5	1991	3,145.39	81,052	29,048	455	110,555	92.01
6	1991	3,135.41	83,213	2,939	6,500	92,652	93.18
7	1991	3,093.68	83,749	2,382	134	86,265	93.18
8	1991	3,211.21	83,547	3,247	133	86,927	92.24
9	1991	3,205.25	83,594	26,714	218	110,526	91.74
10	1991	3,234.20	83,501	30,559	310	114,370	90.92
11	1991	3,228.26	83,518	31,462	313	115,293	90.56
12	1991	3,225.92	83,487	30,603	24,327	138,417	90.63
1	1992	3,259.04	83,526	29,848	258	113,632	90.45
2	1992	3,253.72	83,512	30,251	235	113,998	90.06
3	1992	3,243.24	83,521	30,918	270	114,709	90.23
4	1992	3,239.88	84,199	31,934	8,138	124,271	90.97
5	1992	3,229.79	85,029	30,947	546	116,522	91.93
6	1992	3,223.08	85,073	2,667	147	87,887	91.65
7	1992	3,187.98	85,508	2,221	138	87,867	91.89
8	1992	3,267.44	85,965	2,465	167	88,597	92.39
9	1992	3,172.40	85,838	25,777	316	111,931	92.34
10	1992	3,180.52	85,822	28,994	257	115,073	92.27
11	1992	3,181.73	85,862	29,319	534	115,715	92.31
12	1992	3,186.63	85,842	29,186	25,405	140,433	91.81

Ýmsir hópar ríkisstarfsmanna, mánaðartölur:**Félag íslenskra flugumferðarstjóra**

M.	Ár	Stg.	Di.	Yl.	Öl.	Hl.	Km.dl.
1	1991	91.00	139,880	83,293	47,827	271,000	153.83
2	1991	91.00	140,238	84,240	46,551	271,029	153.77
3	1991	92.00	143,761	87,004	47,497	278,262	157.25
4	1991	92.34	143,550	91,581	49,948	285,079	156.30
5	1991	98.00	144,071	88,762	47,179	280,012	155.01
6	1991	95.00	147,238	93,100	55,948	296,286	156.26
7	1991	97.39	147,876	107,758	52,160	307,794	155.93
8	1991	94.00	146,988	110,878	52,078	309,944	153.80
9	1991	95.46	146,600	83,543	50,041	280,184	152.48
10	1991	92.92	145,567	88,804	50,569	284,940	150.23
11	1991	93.00	144,862	67,184	47,546	259,592	148.87
12	1991	93.00	145,012	39,777	67,534	252,323	149.19
1	1992	95.00	145,023	75,517	55,140	275,680	148.84
2	1992	94.00	145,162	57,191	52,623	254,976	148.36
3	1992	93.00	144,929	65,482	54,202	264,613	148.39
4	1992	93.00	145,144	67,962	62,719	275,825	148.62
5	1992	91.55	147,541	73,776	54,998	276,315	151.18
6	1992	96.06	145,638	83,052	56,420	285,110	148.71
7	1992	98.50	144,647	91,708	57,473	293,828	147.33
8	1992	98.50	144,736	100,841	57,798	303,375	147.42
9	1992	99.52	144,720	65,743	53,792	264,255	147.55
10	1992	100.50	144,531	65,537	53,206	263,274	147.27
11	1992	101.36	144,396	70,695	54,910	270,001	147.13
12	1992	101.50	144,345	36,567	73,664	254,576	146.31

Hjúkrunarfélag Íslands

M.	Ár	Stg.	Di.	Yl.	Öl.	Hl.	Km.dl.
1	1991	466.68	83,159	26,424	10,238	119,821	89.59
2	1991	472.03	83,087	26,312	9,338	118,737	89.25
3	1991	471.07	85,310	35,373	10,298	130,981	91.42
4	1991	466.41	85,454	32,482	9,861	127,797	91.15
5	1991	468.57	85,443	38,550	9,864	133,857	90.06
6	1991	466.65	87,700	31,841	15,847	135,388	91.18
7	1991	466.57	87,852	31,375	8,037	127,264	90.75
8	1991	452.13	88,013	33,927	8,752	130,692	90.22
9	1991	457.19	87,981	27,974	9,426	125,381	89.65
10	1991	460.20	87,904	29,546	10,070	127,520	88.87
11	1991	464.58	87,683	29,335	9,941	126,959	88.28
12	1991	458.25	87,901	11,719	26,590	126,210	88.59

1	1992	469.88	87,928	30,934	11,409	130,271	88.40
2	1992	472.57	88,120	25,348	10,775	124,243	88.23
3	1992	471.02	88,173	25,149	11,900	125,222	88.44
4	1992	468.88	88,682	37,280	18,116	144,078	88.96
5	1992	470.59	89,987	31,699	11,980	133,666	90.33
6	1992	471.09	89,993	28,533	10,566	129,092	90.02
7	1992	458.18	90,368	25,265	9,038	124,671	90.17
8	1992	443.90	91,141	28,726	10,399	130,266	90.94
9	1992	454.16	90,377	24,937	10,934	126,248	90.27
10	1992	464.00	90,194	25,982	11,428	127,604	90.03
11	1992	471.50	90,450	25,189	11,530	127,169	90.29
12	1992	466.47	90,575	30,151	35,203	155,929	89.94

Kjarafélag tæknifræðinga

M.	Ar	Stg.	Di.	Yl.	Öl.	Hl.	Km.dl.
1	1991	130.86	98,229	76,822	2,836	177,887	89.42
2	1991	129.57	98,382	83,747	2,733	184,862	89.29
3	1991	127.10	101,049	79,447	3,632	184,128	91.49
4	1991	131.91	101,179	72,798	3,071	177,048	91.19
5	1991	132.11	100,891	93,726	2,577	197,194	89.85
6	1991	131.35	103,369	83,330	9,506	196,205	90.81
7	1991	133.24	103,479	84,403	3,109	190,991	90.32
8	1991	132.85	103,865	79,522	3,388	186,775	89.96
9	1991	136.95	104,148	77,768	2,180	184,096	89.67
10	1991	135.78	104,571	73,064	3,243	180,878	89.33
11	1991	139.17	104,516	105,288	2,004	211,808	88.91
12	1991	134.78	104,468	63,560	24,220	192,248	88.97
1	1992	134.75	104,478	81,210	3,027	188,715	88.76
2	1992	136.69	104,381	91,060	3,795	199,236	88.31
3	1992	136.03	104,425	79,988	2,898	187,311	88.50
4	1992	137.85	104,410	82,754	12,971	200,135	88.50
5	1992	139.16	106,426	88,053	2,239	196,718	90.27
6	1992	138.32	106,455	87,344	2,901	196,700	89.98
7	1992	139.36	106,589	84,021	3,132	193,742	89.87
8	1992	139.00	106,487	81,822	4,573	192,882	89.78
9	1992	140.99	106,178	86,375	3,222	195,775	89.61
10	1992	141.00	106,290	88,428	4,070	198,788	89.65
11	1992	140.00	106,408	88,540	3,397	198,345	89.75
12	1992	140.16	106,485	79,255	28,584	214,324	89.35

Læknafélag Íslands, sjúkráðgjafar

M.	Ar	Stg.	Di.	Yl.	Öl.	Hl.	Km.dl.
1	1991	237.21	133,163	73,627	18,346	225,136	89.62
2	1991	249.33	133,150	63,236	16,108	212,494	89.35
3	1991	241.70	137,638	73,081	21,678	232,397	92.14
4	1991	236.57	137,819	78,388	18,635	234,842	91.84
5	1991	237.39	138,631	84,637	19,749	243,017	91.28
6	1991	248.24	140,047	78,900	26,423	245,370	90.96
7	1991	245.55	140,696	79,929	20,855	241,480	90.79
8	1991	244.14	142,164	81,202	21,293	244,659	91.04
9	1991	243.07	142,847	79,085	20,668	242,600	90.93
10	1991	242.73	142,214	80,040	20,142	242,396	89.82
11	1991	247.09	141,083	80,396	20,004	241,483	88.73
12	1991	246.26	140,556	25,734	26,357	192,647	88.50
1	1992	240.53	142,019	79,988	23,366	245,373	89.20
2	1992	244.16	141,629	70,902	19,480	232,011	88.59
3	1992	246.62	141,286	74,012	22,339	237,637	88.53
4	1992	240.23	141,484	76,385	32,223	250,092	88.66
5	1992	238.14	144,414	80,242	24,350	249,006	90.56
6	1992	241.63	145,150	76,115	27,268	248,533	90.70
7	1992	237.45	145,152	70,922	23,631	239,705	90.48
8	1992	234.90	146,594	76,985	26,107	249,686	91.38
9	1992	235.00	147,630	76,297	23,239	247,166	92.12
10	1992	236.82	146,569	77,596	24,565	248,725	91.40
11	1992	233.88	146,565	81,445	23,384	251,394	91.40
12	1992	231.92	147,654	84,065	52,049	283,768	91.60

Starfsmannafélag Sinfóníuhljómsveitar Íslands *

M.	Ar	Stg.	Di.	Yl.	Öl.	Hl.	Km.dl.
1	1991	68.79	109,352	3,890	2,270	115,512	118.24
2	1991	68.17	90,066	13,155	2,801	106,022	97.10
3	1991	69.35	92,522	12,207	1,483	106,212	99.51
4	1991	69.73	92,526	7,215	2,363	102,104	99.06
5	1991	69.84	92,566	16,382	1,874	110,822	97.93

6	1991	69.91	145,415	13,169	7,649	166,233	151.75
7	1991	68.50	95,252	3,616	71	98,939	98.76
8	1991	68.50	95,677	2,618	338	98,633	98.44
9	1991	70.88	94,780	15,772	509	111,061	96.93
10	1991	73.07	94,540	7,173	2,220	103,933	95.93
11	1991	72.80	94,606	6,499	3,018	104,123	95.60
12	1991	73.84	144,371	2,514	23,867	170,752	146.05
1	1992	73.63	95,733	3,551	1,754	101,038	96.61
2	1992	73.71	94,920	3,088	3,694	101,702	95.39
3	1992	71.78	94,900	2,284	1,352	98,536	95.54
4	1992	72.06	95,344	2,440	10,263	108,047	95.99
5	1992	71.81	97,138	9,611	2,431	109,180	97.87
6	1992	71.85	147,555	7,082	1,027	155,664	148.14
7	1992	70.29	97,000	12,660	712	110,372	97.15
8	1992	69.50	97,170	1,782	844	99,996	97.32
9	1992	70.38	97,228	2,031	1,320	100,579	97.47
10	1992	72.38	96,931	18,362	2,605	117,898	97.11
11	1992	72.29	96,942	12,232	3,475	112,649	97.12
12	1992	72.63	147,469	4,265	27,115	178,849	146.98

* Eingreiðslur koma inn í dagvinnulaunin í júní og desember ár hvert.

Stéttarfélag verkfræðinga

M.	Ar	Stg.	DI.	YI.	ÖI.	HI.	Km.dl.
1	1991	229.25	106,014	65,507	1,774	173,295	89.30
2	1991	226.38	106,250	80,238	1,368	187,856	89.24
3	1991	227.62	108,875	69,942	1,839	180,656	91.22
4	1991	216.64	109,058	78,282	2,002	189,342	90.95
5	1991	213.73	109,128	84,388	1,638	195,154	89.94
6	1991	226.58	110,975	73,881	7,307	192,163	90.21
7	1991	236.17	110,433	71,020	1,878	183,331	89.19
8	1991	226.28	110,833	77,254	1,496	189,583	88.83
9	1991	232.21	111,381	75,711	1,325	188,417	88.74
10	1991	227.75	110,734	72,776	2,217	185,727	87.53
11	1991	234.02	110,548	90,554	1,857	202,959	87.02
12	1991	235.57	110,211	66,656	23,920	200,787	86.85
1	1992	231.11	110,494	73,402	2,034	185,930	86.86
2	1992	231.80	110,472	80,229	2,327	193,028	86.49
3	1992	234.45	110,342	81,857	3,000	195,199	86.54
4	1992	231.87	110,577	80,709	9,778	201,064	86.73
5	1992	233.07	112,547	84,613	2,950	200,110	88.34
6	1992	240.43	111,796	76,592	2,174	190,562	87.44
7	1992	249.27	110,732	72,246	2,704	185,682	86.39
8	1992	244.26	111,428	73,030	1,990	186,448	86.93
9	1992	237.68	112,409	79,722	2,260	194,391	87.79
10	1992	237.58	112,992	87,786	2,126	202,904	88.19
11	1992	238.77	112,659	86,244	3,291	202,194	87.93
12	1992	243.15	112,267	79,573	25,853	217,693	87.17

Útan félaga, kjaradómsröðun

M.	Ar	Stg.	DI.	YI.	ÖI.	HI.	Km.dl.
1	1991	212.14	175,100	19,311	9,750	204,161	84.76
2	1991	208.27	174,086	24,591	8,797	207,474	84.03
3	1991	209.40	179,337	25,772	5,127	210,236	86.35
4	1991	207.64	179,149	26,601	4,857	210,607	85.86
5	1991	235.93	177,516	23,205	3,405	204,126	84.07
6	1991	238.77	182,029	22,785	8,680	213,494	85.04
7	1991	237.08	182,066	20,241	4,240	206,547	84.51
8	1991	222.27	182,413	27,600	4,829	214,642	84.02
9	1991	215.65	182,202	25,649	4,608	212,459	83.42
10	1991	223.03	182,515	24,281	8,353	215,149	82.91
11	1991	206.26	183,832	27,658	9,987	221,477	83.16
12	1991	203.30	183,834	36,128	28,694	248,656	83.26
1	1992	202.43	183,910	38,160	7,872	229,942	83.09
2	1992	202.38	183,783	42,476	6,175	232,434	82.68
3	1992	207.59	183,437	46,394	9,374	239,205	82.68
4	1992	205.06	183,794	40,714	10,675	235,183	82.84
5	1992	203.98	183,900	43,416	5,910	233,226	82.95
6	1992	202.28	184,421	52,675	14,446	251,542	82.89
7	1992	207.00	257,440	3,348	4,557	265,345	115.43
8	1992	207.37	190,638	59,774	4,643	255,055	85.47
9	1992	205.48	190,654	38,834	6,031	235,519	85.57
10	1992	204.78	190,596	46,933	7,505	245,034	85.49
11	1992	208.39	190,358	46,798	5,627	242,783	85.38
12	1992	204.38	190,262	59,621	25,377	275,260	84.89

Után féлага, ráðherraráðun

M.	Ár	Stg.	DI.	YI.	ÖI.	HI.	Km.dl.
1	1991	234.86	118,305	53,194	2,834	174,333	86.13
2	1991	230.38	118,323	57,815	2,618	178,756	85.89
3	1991	229.85	121,440	62,664	3,469	187,573	87.95
4	1991	232.09	121,199	65,252	4,051	190,502	87.36
5	1991	234.70	121,312	63,651	7,316	192,279	86.41
6	1991	240.03	125,005	64,086	10,458	199,549	87.83
7	1991	234.73	124,918	68,858	3,366	197,142	87.20
8	1991	230.77	123,333	50,514	3,853	177,700	85.44
9	1991	241.98	121,862	62,513	4,836	189,211	83.92
10	1991	245.88	122,309	58,572	6,526	187,407	83.57
11	1991	244.64	122,389	62,995	7,534	192,918	83.27
12	1991	245.95	122,518	57,572	32,134	212,224	83.45
1	1992	246.57	123,422	56,960	5,564	185,946	83.86
2	1992	248.74	123,303	63,465	6,717	193,485	83.43
3	1992	248.87	123,231	62,499	8,116	193,846	83.53
4	1992	245.46	124,632	68,744	16,199	209,575	84.49
5	1992	242.05	126,864	68,626	9,468	204,958	86.06
6	1992	240.35	126,971	68,385	7,293	202,649	85.83
7	1992	236.38	127,479	63,174	7,798	198,451	85.96
8	1992	234.14	127,506	57,121	7,473	192,100	85.98
9	1992	235.85	127,733	64,898	7,580	200,211	86.22
10	1992	237.59	127,251	64,666	6,967	198,884	85.84
11	1992	236.41	127,248	65,346	10,131	202,725	85.84
12	1992	243.50	126,995	71,998	36,654	235,647	85.22

Reykjavíkurborg, mánaðartölur:

Starfsmannafélag Reykjavíkurborgar

M.	Ár	Stg.	DI.	YI.	ÖI.	HI.	Km.dl.
1	1991	1,804.69	63,476	26,028	6,350	95,854	95.29
2	1991	1,816.55	63,559	25,343	5,997	94,899	95.14
3	1991	1,829.98	65,436	26,382	5,759	97,577	97.71
4	1991	1,838.70	65,506	29,750	6,178	101,434	97.37
5	1991	1,880.52	65,180	27,423	5,724	98,327	95.73
6	1991	2,091.93	66,133	23,145	5,307	94,585	95.81
7	1991	2,082.05	66,037	21,287	4,426	91,750	95.06
8	1991	1,986.63	66,450	22,435	4,648	93,533	94.92
9	1991	1,812.60	67,300	24,697	5,888	97,885	95.56
10	1991	1,718.28	67,650	24,071	4,968	96,689	95.31
11	1991	1,620.09	67,722	28,890	5,535	102,147	95.01
12	1991	1,618.39	67,798	27,688	27,785	123,271	95.22
1	1992	1,636.23	67,591	26,446	5,590	99,627	94.70
2	1992	1,645.42	67,656	26,836	5,636	100,128	94.40
3	1992	1,652.69	67,679	26,312	5,286	99,277	94.60
4	1992	1,652.13	67,870	30,494	7,471	105,835	94.87
5	1992	1,699.37	68,667	28,701	4,784	102,152	96.05
6	1992	2,012.15	67,172	29,410	4,501	95,083	93.63
7	1992	2,021.98	66,852	21,401	3,995	92,248	92.95
8	1992	1,899.49	67,310	20,895	4,216	92,421	93.59
9	1992	1,730.43	68,853	22,384	4,876	96,113	95.83
10	1992	1,713.02	69,276	27,106	6,273	102,655	96.36
11	1992	1,715.59	69,439	26,297	5,531	101,267	96.59
12	1992	1,725.81	69,236	28,600	27,795	125,631	95.81

St.Rv., Háskólahópur

M.	Ár	Stg.	DI.	YI.	ÖI.	HI.	Km.dl.
1	1991	465.08	88,385	48,641	3,863	140,889	89.09
2	1991	464.48	88,514	51,227	3,249	142,990	88.96
3	1991	468.83	91,149	57,525	3,889	152,563	91.39
4	1991	472.59	91,156	49,645	3,680	144,481	90.97
5	1991	474.96	91,025	52,279	4,072	147,376	89.77
6	1991	520.40	92,555	53,521	3,995	150,071	90.04
7	1991	516.76	92,650	45,657	3,711	142,018	89.55
8	1991	491.62	93,008	43,661	3,759	140,428	89.21
9	1991	484.99	93,697	55,530	3,519	152,746	89.33
10	1991	484.17	93,688	51,989	3,529	149,206	88.62
11	1991	488.74	93,827	54,066	3,213	151,106	88.39
12	1991	490.45	93,971	57,525	25,193	176,689	88.62
1	1992	484.79	94,028	47,307	3,912	145,247	88.46
2	1992	485.60	94,177	52,751	3,809	150,737	88.23

3	1992	485.84	94,166	57,658	3,815	155,639	88.38
4	1992	484.42	94,343	56,565	3,731	154,639	88.55
5	1992	494.42	94,815	52,298	4,310	151,423	89.05
6	1992	525.03	93,760	58,707	3,904	156,371	87.75
7	1992	543.16	93,906	49,523	3,997	147,426	87.67
8	1992	524.09	94,020	46,709	4,500	145,229	87.78
9	1992	503.82	95,428	58,284	4,431	158,143	89.18
10	1992	511.84	95,627	51,396	5,127	152,150	89.31
11	1992	513.66	95,696	51,093	4,797	151,586	89.38
12	1992	515.07	95,777	57,010	27,451	180,238	88.99

Fóstrufélag Íslands (R.borg) *

M.	Ár	Stg.	Di.	Yi.	Öi.	Hl.	Km.dl.
1	1991	216.98	69,251	13,862	1,658	84,771	91.80
2	1991	214.91	69,368	16,149	1,386	86,903	91.68
3	1991	211.80	71,358	15,246	1,404	88,008	94.09
4	1991	210.63	71,451	16,086	1,663	89,200	93.77
5	1991	210.46	71,429	16,629	1,904	89,962	92.64
6	1991	221.92	72,852	16,815	1,843	91,510	93.20
7	1991	203.28	73,531	14,395	1,528	89,454	93.46
8	1991	207.11	73,399	10,971	1,423	85,793	92.58
9	1991	222.81	73,433	18,022	1,536	92,991	92.07
10	1991	218.78	73,478	18,979	1,493	93,950	91.40
11	1991	221.88	73,516	17,173	1,412	92,101	91.07
12	1991	221.21	73,373	15,994	22,781	112,148	90.99
1	1992	223.55	73,439	15,572	1,543	90,554	90.85
2	1992	224.04	73,441	14,813	1,506	89,760	90.48
3	1992	223.00	73,568	16,221	1,410	91,199	90.80
4	1992	225.03	73,590	16,308	2,242	92,140	90.83
5	1992	224.42	74,884	16,377	1,427	92,688	92.49
6	1992	249.76	74,213	14,214	1,444	89,871	91.34
7	1992	218.40	74,895	14,044	1,516	90,455	91.95
8	1992	227.23	74,749	10,451	1,890	87,090	91.77
9	1992	246.97	78,082	13,888	1,814	93,784	95.96
10	1992	243.92	77,993	16,437	1,517	95,947	95.79
11	1992	243.84	78,086	16,216	1,406	95,708	95.91
12	1992	245.22	78,117	16,305	23,101	117,523	95.44

* Kaupmáttur miðast við 01/1989=100.00.

Hjúkrunarfélag Íslands (R.borg)

M.	Ár	Stg.	Di.	Yi.	Öi.	Hl.	Km.dl.
1	1991	183.84	80,763	37,190	13,749	131,702	87.66
2	1991	183.85	81,012	34,154	11,894	127,060	87.67
3	1991	182.74	83,310	54,080	12,125	149,515	89.94
4	1991	179.46	83,480	48,801	11,974	144,255	89.70
5	1991	179.44	83,481	57,897	12,645	154,023	88.64
6	1991	180.53	85,853	49,466	13,030	148,349	89.92
7	1991	176.34	85,857	42,566	12,362	140,785	89.35
8	1991	169.04	85,693	48,338	13,152	147,183	88.49
9	1991	179.26	85,731	43,989	14,297	144,017	88.00
10	1991	184.86	85,867	42,110	15,585	143,562	87.46
11	1991	186.98	86,362	43,926	14,476	144,764	87.59
12	1991	180.44	86,254	47,004	38,429	171,687	87.58
1	1992	182.92	86,194	43,921	15,782	145,897	87.31
2	1992	184.46	86,073	34,179	14,854	135,106	86.82
3	1992	182.61	86,294	38,899	15,383	140,576	87.20
4	1992	175.28	86,412	58,995	14,153	159,560	87.32
5	1992	178.92	86,310	50,004	14,960	151,274	87.28
6	1992	175.77	86,784	47,070	13,187	147,041	87.45
7	1992	177.33	88,252	46,395	12,632	147,279	88.71
8	1992	175.16	88,376	50,782	11,555	150,713	88.84
9	1992	177.75	87,713	39,045	13,313	140,071	88.26
10	1992	183.36	87,851	37,581	15,124	140,556	88.34
11	1992	184.25	88,463	38,453	14,994	141,910	88.96
12	1992	180.45	88,586	46,553	37,834	172,973	88.62

Ýmsir hópar hjá Reykjavíkurborg *

M.	Ár	Stg.	Di.	Yi.	Öi.	Hl.	Km.dl.
10	1991	95.54	66,231	57,393	28,984	152,608	100.00
11	1991	194.12	66,764	29,457	14,270	110,491	100.38
12	1991	189.84	66,841	39,443	37,332	143,616	100.61
1	1992	188.68	66,950	28,230	14,640	109,820	100.53
2	1992	189.32	66,979	21,203	14,427	102,609	100.15
3	1992	191.16	67,055	23,320	14,658	105,033	100.45

4	1992	189,88	66,786	45,485	12,015	124,286	100,05
5	1992	186,79	66,001	34,469	13,621	114,091	98,94
6	1992	185,27	65,897	27,021	11,134	104,052	98,44
7	1992	183,24	65,881	18,547	9,664	94,092	98,17
8	1992	179,28	66,124	22,927	9,936	98,987	98,54
9	1992	185,76	66,157	23,932	12,661	102,750	98,69
10	1992	183,98	69,215	26,071	15,070	110,356	103,18
11	1992	190,11	69,703	27,373	14,612	111,688	103,91
12	1992	187,88	69,734	34,162	35,427	139,323	103,42

* Kaupmáttur miðar við 10/1991 = 100,00.

Bandalög mánaðartölur:

BSRB félagin hjá ríkinu, alls

M.	Ár	Stg.	Di.	Yl.	Öl.	Hl.	Km.dl.
1	1991	6,698,56	67,601	34,059	6,209	107,869	92,28
2	1991	6,703,49	67,682	31,327	5,650	104,659	92,12
3	1991	6,744,22	69,904	30,975	5,537	106,416	94,92
4	1991	6,786,82	69,506	34,712	6,014	110,232	93,94
5	1991	7,092,57	68,807	34,083	5,881	108,771	91,89
6	1991	8,044,20	68,937	29,007	10,780	108,724	90,82
7	1991	8,148,22	68,889	26,543	4,778	100,210	90,17
8	1991	7,885,27	69,317	27,232	4,874	101,423	90,03
9	1991	7,084,16	71,072	30,303	5,691	107,066	91,76
10	1991	6,960,37	71,498	30,768	5,829	108,095	91,59
11	1991	6,890,67	71,589	33,416	6,027	111,032	91,33
12	1991	6,843,78	71,350	27,644	27,040	126,034	91,12
1	1992	6,879,95	71,979	33,562	7,403	112,944	91,70
2	1992	6,910,23	72,098	30,861	6,828	109,787	91,47
3	1992	6,896,84	72,587	27,959	6,515	107,061	92,25
4	1992	6,880,15	72,734	31,530	15,295	119,559	92,45
5	1992	7,129,00	72,727	32,429	6,689	111,845	92,50
6	1992	7,891,24	71,270	28,624	5,923	105,817	90,33
7	1992	8,059,34	70,832	25,784	5,555	102,171	89,55
8	1992	7,879,31	71,200	25,827	5,483	102,510	90,02
9	1992	7,042,65	73,059	29,316	6,830	109,205	92,46
10	1992	6,890,46	74,225	31,733	7,040	112,998	93,88
11	1992	6,876,77	74,434	31,525	8,367	114,326	94,14
12	1992	6,921,73	74,461	31,876	30,503	136,840	93,69

BHMR félagin hjá ríkinu, alls

M.	Ár	Stg.	Di.	Yl.	Öl.	Hl.	Km.dl.
1	1991	3,490,11	89,871	39,576	3,467	132,914	88,77
2	1991	3,567,21	89,457	42,331	3,270	135,058	88,10
3	1991	3,464,36	92,219	43,769	3,609	139,597	90,60
4	1991	3,506,14	92,249	46,717	3,599	142,565	90,21
5	1991	3,527,74	92,319	47,150	4,491	143,960	89,21
6	1991	3,635,27	94,335	29,447	9,390	133,172	89,92
7	1991	3,774,16	94,051	25,877	3,187	123,115	89,07
8	1991	3,728,68	94,157	28,185	3,386	125,728	88,49
9	1991	3,650,96	94,576	43,665	3,386	141,627	88,35
10	1991	3,623,78	94,665	44,352	4,302	143,319	87,75
11	1991	3,633,33	94,808	45,407	4,133	144,348	87,51
12	1991	3,615,09	94,832	38,907	25,953	159,692	87,63
1	1992	3,654,41	94,840	42,357	4,465	141,662	87,42
2	1992	3,744,75	94,703	40,619	3,979	139,301	86,94
3	1992	3,664,11	94,902	49,839	4,634	149,375	87,27
4	1992	3,655,48	95,377	50,107	11,766	157,250	87,72
5	1992	3,677,56	96,474	55,625	5,450	157,549	88,79
6	1992	3,749,19	96,345	30,897	4,619	131,861	88,36
7	1992	3,689,77	96,450	28,237	3,458	128,145	88,24
8	1992	3,629,79	96,782	29,595	3,598	129,975	88,54
9	1992	3,571,02	97,026	42,973	3,674	143,673	88,85
10	1992	3,560,83	97,185	43,873	3,830	144,888	88,94
11	1992	3,571,71	97,204	44,159	4,111	145,474	88,96
12	1992	3,570,49	97,293	46,352	29,120	172,765	88,58

Kennarasamband Íslands hjá ríkinu, alls

M.	Ár	Stg.	Di.	Yl.	Öl.	Hl.	Km.dl.
1	1991	3,166,93	78,768	28,202	210	107,180	91,40
2	1991	3,162,62	78,774	29,664	195	108,633	91,14
3	1991	3,159,34	81,014	32,072	217	113,303	93,50

4	1991	3,155.53	81,027	31,324	244	112,595	93.09
5	1991	3,145.39	81,052	29,048	455	110,555	92.01
6	1991	3,135.41	83,213	2,939	6,500	92,652	93.18
7	1991	3,093.68	83,749	2,382	134	86,265	93.18
8	1991	3,211.21	83,547	3,247	133	86,927	92.24
9	1991	3,205.25	83,594	26,714	218	110,526	91.74
10	1991	3,234.20	83,501	30,559	310	114,370	90.92
11	1991	3,228.26	83,518	31,462	313	115,293	90.56
12	1991	3,225.92	83,487	30,603	24,327	138,417	90.63
1	1992	3,259.04	83,526	29,848	258	113,632	90.45
2	1992	3,253.72	83,512	30,251	235	113,998	90.06
3	1992	3,243.24	83,521	30,918	270	114,709	90.23
4	1992	3,239.88	84,199	31,934	8,138	124,271	90.97
5	1992	3,229.79	85,029	30,947	546	116,522	91.93
6	1992	3,223.08	85,073	2,667	147	87,887	91.65
7	1992	3,187.98	85,508	2,221	138	87,867	91.89
8	1992	3,267.44	85,965	2,465	167	88,597	92.39
9	1992	3,172.40	85,838	25,777	316	111,931	92.34
10	1992	3,180.52	85,822	28,994	257	115,073	92.27
11	1992	3,181.73	85,862	29,319	534	115,715	92.31
12	1992	3,186.63	85,842	29,186	25,405	140,433	91.81

Starfsmannafélag Reykjavíkurborgar

M.	Ar	Stg.	Di.	Yl.	Öl.	Hl.	Km.dl.
1	1991	1,804.69	63,476	26,028	6,350	95,854	95.29
2	1991	1,816.55	63,559	25,343	5,997	94,899	95.14
3	1991	1,829.98	65,436	26,382	5,759	97,577	97.71
4	1991	1,838.70	65,506	29,750	6,178	101,434	97.37
5	1991	1,880.52	65,180	27,423	5,724	98,327	95.73
6	1991	2,091.93	66,133	23,145	5,307	94,585	95.81
7	1991	2,082.05	66,037	21,287	4,426	91,750	95.06
8	1991	1,986.63	66,450	22,435	4,648	93,533	94.92
9	1991	1,812.60	67,300	24,697	5,888	97,885	95.56
10	1991	1,718.28	67,650	24,071	4,968	96,689	95.31
11	1991	1,620.09	67,722	28,890	5,535	102,147	95.01
12	1991	1,618.39	67,798	27,688	27,785	123,271	95.22
1	1992	1,636.23	67,591	26,446	5,590	99,627	94.70
2	1992	1,645.42	67,656	26,836	5,636	100,128	94.40
3	1992	1,652.69	67,679	26,312	5,286	99,277	94.60
4	1992	1,652.13	67,870	30,494	7,471	105,835	94.87
5	1992	1,699.37	68,667	28,701	4,784	102,152	96.05
6	1992	2,012.15	67,172	23,410	4,501	95,083	93.63
7	1992	2,021.98	66,852	21,401	3,995	92,248	92.95
8	1992	1,899.49	67,310	20,895	4,216	92,421	93.59
9	1992	1,730.43	68,853	22,384	4,876	96,113	95.83
10	1992	1,713.02	69,276	27,106	6,273	102,655	96.36
11	1992	1,715.59	69,439	26,297	5,531	101,267	96.59
12	1992	1,725.81	69,236	28,600	27,795	125,631	95.81

4.2. Ársfjórðungstölur, kaupmáttur dagvinnulauna, yfirvinnulauna og heildarlauna.

Hér á næstu síðum eru útreiknuð meðallaun eftir félögum, hópum og bandalögum ásamt kaupmætti dagvinnulauna.

Kaupmáttur miðar við 1. ársfjórðung 1987 = 100,00, nema annað sé tekið sérstaklega fram í stjórnumerkingum.

Skýringar: Áfj. = ársfjórðungur, Km.dl. = kaupmáttur dagvinnulauna, Km.yl. = kaupmáttur yfirvinnulauna, Km.Hl. = kaupmáttur heildarlauna.

BSRB ríkisstarfsmenn:

Félag flugmálastarfsmanna ríkisins

Áfj.	Ár	Km.dl.	Km.yl.	Km.Hl.
1	1991	89.96	93.89	93.27
2	1991	87.74	92.13	92.63
3	1991	86.78	83.47	86.01
4	1991	85.73	70.07	86.41
1	1992	85.74	83.43	88.35
2	1992	87.37	88.45	92.30
3	1992	88.79	88.11	89.98
4	1992	90.02	90.89	97.85

Félag íslenskra símamanna skrifsth.

Áfj.	Ár	Km.dl.	Km.yl.	Km.Hl.
1	1991	94.31	116.13	100.04
2	1991	94.35	130.25	105.25
3	1991	93.25	107.35	97.02
4	1991	93.25	119.45	107.09
1	1992	89.28	102.32	93.58
2	1992	89.68	106.75	97.28
3	1992	89.52	90.09	92.36
4	1992	90.97	101.37	103.57

Félag íslenskra símamanna tæknihöpur

Áfj.	Ár	Km.dl.	Km.yl.	Km.Hl.
1	1991	87.32	74.04	81.51
2	1991	86.86	72.65	81.70
3	1991	86.34	68.17	78.00
4	1991	84.52	64.63	80.33
1	1992	87.25	68.39	79.21
2	1992	87.66	69.77	81.31
3	1992	88.04	61.87	76.96
4	1992	88.38	63.51	83.94

Félag íslenskra símamanna alls

Áfj.	Ár	Km.dl.	Km.yl.	Km.Hl.
1	1991	90.78	85.39	88.88
2	1991	90.58	89.03	91.33
3	1991	89.68	77.86	85.28
4	1991	88.96	80.78	91.68
1	1992	88.52	80.27	86.14
2	1992	88.90	82.44	88.86
3	1992	88.95	71.42	84.07
4	1992	89.96	76.57	93.19

Félag starfsmanna sjónarráðsins

Áfj.	Ár	Km.dl.	Km.yl.	Km.Hl.
1	1991	87.43	100.57	91.32
2	1991	87.56	92.97	91.22
3	1991	86.35	78.03	84.79
4	1991	86.47	94.38	95.99
1	1992	86.41	92.28	88.53
2	1992	86.77	93.06	91.69
3	1992	86.32	79.32	85.53
4	1992	87.73	103.25	99.85

Fóstrufélag Íslands *

Áfj.	Ár	Km.dl.	Km.yl.	Km.Hl.
1	1991	90.69	121.89	98.11
2	1991	90.17	109.86	98.14
3	1991	89.32	81.47	90.98
4	1991	87.94	91.44	98.73
1	1992	87.94	99.66	94.17
2	1992	89.07	105.48	98.90
3	1992	89.55	70.08	89.91
4	1992	91.12	109.12	105.75

* Kaupmáttur miðar við 1. ársfj. 1989 = 100.00

Landssamband lögreglumanna

Áfj.	Ár	Km.dl.	Km.yl.	Km.Hl.
1	1991	85.70	76.87	83.69
2	1991	84.61	74.49	81.91
3	1991	82.20	62.81	73.32
4	1991	84.03	69.83	82.68
1	1992	85.80	68.20	81.29
2	1992	85.81	66.58	80.90
3	1992	85.31	63.32	76.24
4	1992	92.11	73.72	90.56

Ljósmaðrafélag Íslands

Áfj.	Ár	Km.dl.	Km.yl.	Km.Hl.
1	1991	89.62	146.71	96.16
2	1991	90.27	189.09	103.10
3	1991	89.54	143.41	93.69
4	1991	88.31	94.36	92.41
1	1992	88.25	121.72	93.28
2	1992	88.13	197.63	103.91
3	1992	87.43	101.10	87.73
4	1992	90.65	114.10	101.01

Póstmannafélag Íslands

Áfj.	Ár	Km.dl.	Km.yl.	Km.Hl.
1	1991	91.76	84.58	87.78
2	1991	87.68	61.34	79.51
3	1991	85.19	49.64	72.49
4	1991	88.22	67.05	86.12
1	1992	89.98	74.40	83.53
2	1992	86.32	53.44	76.81
3	1992	84.85	50.12	72.38
4	1992	90.18	71.94	90.21

Sjúkraliðafélag Íslands *

Áfj.	Ár	Km.dl.	Km.yl.	Km.Hl.
1	1992	100.00	100.00	100.00
2	1992	100.21	155.56	109.68
3	1992	100.22	73.81	92.49
4	1992	105.35	116.38	114.59

* Kaupmáttur miðar við 1. ársfj. 1992 = 100.00

Starfsmannafélag ríkisútvarpsins

Áfj.	Ár	Km.dl.	Km.yl.	Km.Hl.
1	1991	85.69	89.92	87.45

2	1991	85.82	87.94	88.39
3	1991	83.95	66.00	79.74
4	1991	84.37	74.52	88.30
1	1992	84.16	79.56	84.37
2	1992	84.77	80.00	86.63
3	1992	84.48	62.26	79.73
4	1992	85.30	82.56	92.24

Starfsmannafélag sjónvarpsins

Afj.	Ar	Km.dl.	Km.yl.	Km.hl.
1	1991	88.57	70.83	80.33
2	1991	89.69	76.03	84.13
3	1991	88.76	53.79	72.62
4	1991	88.52	62.30	80.96
1	1992	88.64	63.67	77.70
2	1992	89.22	67.63	80.98
3	1992	88.56	55.51	73.88
4	1992	90.12	67.06	85.37

Starfsmannafélag ríkisstofnana T

Afj.	Ar	Km.dl.	Km.yl.	Km.hl.
1	1991	88.06	101.10	92.58
2	1991	87.28	104.64	95.51
3	1991	85.69	91.42	87.09
4	1991	86.70	94.60	96.19
1	1992	88.41	91.59	90.23
2	1992	88.33	92.59	92.20
3	1992	85.36	84.65	85.13
4	1992	89.29	96.17	98.49

Starfsmannafélag ríkisstofnana S

Afj.	Ar	Km.dl.	Km.yl.	Km.hl.
1	1991	89.87	99.79	92.32
2	1991	89.34	101.32	94.40
3	1991	88.09	85.16	87.78
4	1991	88.55	96.72	97.82
1	1992	88.52	94.76	90.39
2	1992	89.25	96.20	94.03
3	1992	88.47	83.67	87.80
4	1992	90.35	98.70	100.44

Starfsmannafélag ríkisstofnana H

Afj.	Ar	Km.dl.	Km.yl.	Km.hl.
1	1991	82.69	84.51	83.14
2	1991	82.85	90.26	85.76
3	1991	81.94	65.71	77.39
4	1991	81.20	58.27	79.22
1	1992	80.95	68.56	78.72
2	1992	81.60	76.55	82.53
3	1992	81.45	52.79	74.53
4	1992	82.97	66.41	86.12

Starfsmannafélag ríkisstofnana alls

Afj.	Ar	Km.dl.	Km.yl.	Km.hl.
1	1991	87.45	95.27	89.65
2	1991	87.03	98.80	92.22
3	1991	85.74	82.59	84.59
4	1991	86.19	86.45	92.21
1	1992	86.90	87.51	87.27
2	1992	87.32	90.26	90.40
3	1992	85.86	77.93	83.50
4	1992	88.44	90.76	96.06

Tölyarðafélag Íslands

Afj.	Ar	Km.dl.	Km.yl.	Km.hl.
1	1991	84.94	84.33	84.44
2	1991	84.19	83.08	84.59
3	1991	82.49	67.75	77.08
4	1991	84.47	72.93	84.86
1	1992	84.63	74.81	81.72
2	1992	84.51	70.40	80.36
3	1992	83.71	64.84	77.06

4	1992	86.75	66.90	84.58
---	------	-------	-------	-------

BSRB félagin hjá ríkinu, alls

Afj.	Ar	Km.dl.	Km.yl.	Km.hl.
1	1991	86.45	88.13	86.81
2	1991	85.59	87.21	87.43
3	1991	84.11	73.17	80.08
4	1991	84.81	78.87	88.16
1	1992	85.24	78.90	83.82
2	1992	85.15	78.80	85.40
3	1992	84.13	68.53	79.24
4	1992	87.19	80.71	91.96

BHMR ríkisstarfsmenn:

BHMR hópur 1 (HÍK/G)

Afj.	Ar	Km.dl.	Km.yl.	Km.hl.
1	1991	89.01	97.05	92.08
2	1991	89.86	68.67	86.35
3	1991	88.98	33.55	72.97
4	1991	87.71	94.21	96.10
1	1992	87.63	93.76	89.92
2	1992	89.10	67.35	85.64
3	1992	89.77	31.52	73.05
4	1992	89.43	85.22	94.57

BHMR hópur 2 (HÍK/F)

Afj.	Ar	Km.dl.	Km.yl.	Km.hl.
1	1991	85.46	85.49	85.51
2	1991	86.17	64.14	79.73
3	1991	85.48	35.60	67.16
4	1991	83.84	84.46	89.03
1	1992	83.52	78.04	81.66
2	1992	84.63	61.41	78.05
3	1992	85.27	31.34	65.49
4	1992	85.39	78.60	88.21

BHMR hópur 3 (FH,FHA,KKHÍ,FTK) *

Afj.	Ar	Km.dl.	Km.yl.	Km.hl.
1	1991	81.21	304.41	105.01
2	1991	80.75	326.14	108.02
3	1991	78.61	260.66	97.69
4	1991	77.88	262.11	102.72
1	1992	77.53	363.39	107.65
2	1992	78.35	458.68	120.62
3	1992	78.67	258.39	97.97
4	1992	78.86	278.46	105.60

* Félag háskólaennara á Akureyri kemur inn í hópinna fyrri hluta árs 1992.

BHMR hópur 4 (FHH,SSR,KFI,SÍF,MTÍ,RTÍ) *

Afj.	Ar	Km.dl.	Km.yl.	Km.hl.
1	1991	79.38	95.85	83.59
2	1991	80.17	105.05	87.69
3	1991	79.69	92.22	82.57
4	1991	78.26	72.94	81.33
1	1992	78.13	86.47	80.87
2	1992	79.27	93.28	85.02
3	1992	79.28	79.50	79.85
4	1992	79.18	85.45	86.84

* Röntgentæknafélag Íslands kemur inn frá og með ársbyrjun 1992.

BHMR hópur 5 (LÆÍ,DÍ,SSI,PÍ*)

Afj.	Ar	Km.dl.	Km.yl.	Km.hl.
1	1991	85.30	118.54	88.29
2	1991	85.99	137.50	93.70
3	1991	83.68	105.42	85.41
4	1991	83.67	120.82	92.39
1	1992	82.81	114.40	87.52
2	1992	83.71	129.06	91.91

3	1992	82.51	138.85	89.15
4	1992	84.35	184.09	103.21

* Prestafélag Íslands fer úr höpnum seinni hluta ársins 1992.

BHMR hópur 6 (KVH,KFÍF,SLÍR,FHSS)

Afj.	Ár	Km.dl.	Km.yl.	Km.hl.
1	1991	84.65	102.67	90.46
2	1991	85.38	104.76	92.94
3	1991	84.72	90.55	86.69
4	1991	83.68	103.40	95.17
1	1992	83.68	101.93	90.83
2	1992	84.76	106.41	94.48
3	1992	85.46	93.57	88.57
4	1992	85.43	106.23	97.59

BHMR hópur 7 (KA,FÍN,SMN,FF)

Afj.	Ár	Km.dl.	Km.yl.	Km.hl.
1	1991	85.28	102.46	90.32
2	1991	85.61	109.65	93.91
3	1991	84.09	99.09	88.33
4	1991	83.83	96.67	92.17
1	1992	83.28	92.14	86.19
2	1992	83.68	98.75	89.64
3	1992	83.52	96.38	87.43
4	1992	84.08	95.38	92.23

BHMR hópur 8 (FB,FÍF,ÚTG)

Afj.	Ár	Km.dl.	Km.yl.	Km.hl.
1	1991	83.78	104.12	88.32
2	1991	84.40	106.67	91.21
3	1991	83.98	96.83	86.98
4	1991	82.70	105.33	93.83
1	1992	82.51	101.37	87.28
2	1992	83.28	109.17	91.50
3	1992	83.03	96.16	86.31
4	1992	82.65	106.10	94.24

BHMR félagin, alls

Afj.	Ár	Km.dl.	Km.yl.	Km.hl.
1	1991	84.92	102.79	89.94
2	1991	85.54	98.58	90.77
3	1991	84.43	76.06	82.20
4	1991	83.47	98.80	92.68
1	1992	83.07	101.38	88.67
2	1992	84.10	104.03	91.90
3	1992	84.34	76.42	82.34
4	1992	84.61	101.95	94.81

Kennarasamband Íslands:

Kennarasamband Íslands grunnskólar

Afj.	Ár	Km.dl.	Km.yl.	Km.hl.
1	1991	85.90	95.85	88.45
2	1991	86.59	65.28	83.17
3	1991	86.26	31.75	72.87
4	1991	84.70	91.10	92.62
1	1992	84.27	90.47	85.92
2	1992	85.43	64.77	82.52
3	1992	86.03	28.80	71.99
4	1992	85.93	84.34	92.05

Kennarasamband Íslands framhaldsskólar

Afj.	Ár	Km.dl.	Km.yl.	Km.hl.
1	1991	85.05	92.75	87.38
2	1991	85.82	71.07	82.87
3	1991	85.26	42.31	72.09
4	1991	83.64	99.92	93.60
1	1992	83.16	87.58	84.51
2	1992	84.59	66.26	80.72
3	1992	85.76	36.74	70.92

4	1992	85.98	99.54	95.98
---	------	-------	-------	-------

Kennarasamband Íslands, alls

Afj.	Ár	Km.dl.	Km.yl.	Km.hl.
1	1991	85.82	95.51	88.35
2	1991	86.51	66.02	83.14
3	1991	86.16	33.08	72.78
4	1991	84.60	92.35	92.76
1	1992	84.17	90.26	85.82
2	1992	85.36	65.02	82.35
3	1992	86.00	29.80	71.87
4	1992	85.93	86.19	92.44

Ýmsir hópar ríkisstarfsmanna:

Félag íslenskra flugumferðarstjóra

Afj.	Ár	Km.dl.	Km.yl.	Km.hl.
1	1991	127.26	80.63	107.85
2	1991	128.00	84.89	111.01
3	1991	126.53	91.36	112.70
4	1991	122.72	58.20	98.34
1	1992	121.98	58.65	97.65
2	1992	122.77	66.51	102.73
3	1992	121.08	75.94	105.19
4	1992	120.64	50.73	96.07

Hjúkrunarfélag Íslands

Afj.	Ár	Km.dl.	Km.yl.	Km.hl.
1	1991	89.03	106.47	92.05
2	1991	89.73	121.87	96.96
3	1991	89.15	107.54	91.14
4	1991	87.54	80.18	89.02
1	1992	87.32	91.84	88.32
2	1992	88.72	109.89	94.54
3	1992	89.40	88.51	88.19
4	1992	89.03	91.10	94.87

Kjarafélag tæknifræðinga

Afj.	Ár	Km.dl.	Km.yl.	Km.hl.
1	1991	88.99	98.27	92.74
2	1991	89.54	100.31	94.86
3	1991	88.91	94.44	90.96
4	1991	88.01	93.27	93.20
1	1992	87.47	96.47	91.12
2	1992	88.52	98.63	93.93
3	1992	88.68	95.96	91.78
4	1992	88.51	97.31	96.18

Læknafélag Íslands sjúkráhhúslæknar

Afj.	Ár	Km.dl.	Km.yl.	Km.hl.
1	1991	88.96	93.69	91.07
2	1991	89.95	105.95	96.46
3	1991	89.50	102.47	94.61
4	1991	87.63	78.01	86.34
1	1992	87.39	93.81	90.78
2	1992	88.58	97.02	94.86
3	1992	89.90	93.06	93.05
4	1992	90.04	100.72	98.83

Starfsmannafélag sinfónuhljómsveitar Íslands *

Afj.	Ár	Km.dl.	Km.yl.	Km.hl.
1	1991	96.67	119.51	99.06
2	1991	107.31	147.36	112.38
3	1991	90.31	86.99	89.13
4	1991	103.79	61.97	107.63
1	1992	88.29	34.12	85.04
2	1992	105.04	72.91	105.14
3	1992	89.64	62.69	87.27
4	1992	104.87	132.04	114.81

* Eingreiðslur koma inn í dagvinnulaun á 2. og 4. árstjórnun á hvort.

Stéttarfélag verkfræðinga

Afj.	Ár	Km.dl.	Km.yl.	Km.hl.
1	1991	88.64	99.22	92.79
2	1991	89.09	106.60	96.84
3	1991	87.65	98.35	91.77
4	1991	85.89	99.38	94.84
1	1992	85.39	101.23	91.85
2	1992	86.25	103.82	94.53
3	1992	85.79	96.13	90.12
4	1992	86.51	108.21	98.98

Utan féлага kjaradómsröðun

Afj.	Ár	Km.dl.	Km.yl.	Km.hl.
1	1991	82.22	135.79	88.51
2	1991	82.17	138.21	87.66
3	1991	81.18	136.26	86.08
4	1991	80.33	160.34	91.39
1	1992	80.06	231.56	93.27
2	1992	80.14	248.81	95.60
3	1992	92.33	184.78	99.98
4	1992	82.42	277.26	100.71

Utan féлага ráðherraröðun

Afj.	Ár	Km.dl.	Km.yl.	Km.hl.
1	1991	83.49	109.88	91.59
2	1991	84.04	119.77	96.77
3	1991	82.38	110.06	91.27
4	1991	80.38	106.44	94.26
1	1992	80.55	108.15	90.71
2	1992	82.33	121.53	97.58
3	1992	82.91	108.94	93.00
4	1992	82.51	118.68	100.25

Reykjavíkurborg:

Starfsmannafélag Reykjavíkurborgar

Afj.	Ár	Km.dl.	Km.yl.	Km.hl.
1	1991	88.44	100.42	91.81
2	1991	88.69	101.12	91.74
3	1991	87.59	84.06	85.94
4	1991	87.63	97.58	96.08
1	1992	87.06	95.99	88.91
2	1992	87.27	98.58	89.69
3	1992	86.59	77.51	82.96
4	1992	88.62	98.24	97.35

STR.V. Háskólahópur

Afj.	Ár	Km.dl.	Km.yl.	Km.hl.
1	1991	82.25	102.16	89.00
2	1991	82.68	99.01	88.40
3	1991	81.82	89.59	84.66
4	1991	81.08	99.67	91.33
1	1992	80.91	95.58	85.99
2	1992	80.99	101.56	88.00
3	1992	80.76	92.96	85.32
4	1992	81.71	96.01	91.55

Fóstrufélag Íslands (R.borg) *

Afj.	Ár	Km.dl.	Km.yl.	Km.hl.
1	1991	93.63	117.14	96.28
2	1991	94.34	125.77	98.43
3	1991	93.81	107.90	95.05
4	1991	92.25	126.70	103.81
1	1992	91.80	112.67	94.01
2	1992	92.65	112.93	94.97
3	1992	94.44	92.44	93.57
4	1992	96.87	117.57	106.36

* Kaupmáttur miðar við 1. ársfj. 1989=100.00.

Hjúkrunarfélag Íslands (R.borg)

Afj.	Ár	Km.dl.	Km.yl.	Km.hl.
1	1991	87.18	103.82	92.41
2	1991	88.17	126.79	99.14
3	1991	87.37	106.53	93.34
4	1991	86.31	103.38	97.65
1	1992	85.88	90.45	89.12
2	1992	86.13	120.56	96.71
3	1992	87.36	104.75	92.13
4	1992	87.39	94.09	95.55

Ýmsir hópar hjá Reykjavíkurborg *

Afj.	Ár	Km.dl.	Km.yl.	Km.hl.
4	1991	100.00	100.00	100.00
1	1992	99.93	61.87	79.74
2	1992	98.71	91.13	86.01
3	1992	98.03	55.36	73.95
4	1992	103.05	74.06	90.19

* Kaupmáttur miðar við 4. ársfj. 1991=100.00.

Bandalög og hópar samtals:

BSRB félögin hjá ríkinu, alls

Afj.	Ár	Km.dl.	Km.yl.	Km.hl.
1	1991	86.45	88.13	86.81
2	1991	85.59	87.21	87.43
3	1991	84.11	73.17	80.08
4	1991	84.81	78.87	88.16
1	1992	85.24	78.90	83.82
2	1992	85.15	78.80	85.40
3	1992	84.13	68.53	79.24
4	1992	87.19	80.71	91.96

BHMR félögin, alls

Afj.	Ár	Km.dl.	Km.yl.	Km.hl.
1	1991	84.92	102.79	89.94
2	1991	85.54	98.58	90.77
3	1991	84.43	76.06	82.20
4	1991	83.47	98.80	92.68
1	1992	83.07	101.38	88.67
2	1992	84.10	104.03	91.90
3	1992	84.34	76.42	82.34
4	1992	84.61	101.95	94.81

Kepparasamband Íslands, alls

Afj.	Ár	Km.dl.	Km.yl.	Km.hl.
1	1991	85.82	95.51	88.35
2	1991	86.51	66.02	83.14
3	1991	86.16	33.08	72.78
4	1991	84.60	92.35	92.76
1	1992	84.17	90.26	85.82
2	1992	85.36	65.02	82.35
3	1992	86.00	29.80	71.87
4	1992	85.93	86.19	92.44

Starfsmannafélag Reykjavíkurborgar

Afj.	Ár	Km.dl.	Km.yl.	Km.hl.
1	1991	88.44	100.42	91.81
2	1991	88.69	101.12	91.74
3	1991	87.59	84.06	85.94
4	1991	87.63	97.58	96.08
1	1992	87.06	95.99	88.91
2	1992	87.27	98.58	89.69
3	1992	86.59	77.51	82.96
4	1992	88.62	98.24	97.35

4.3. Meðallaun frá 1982 á bandalög.

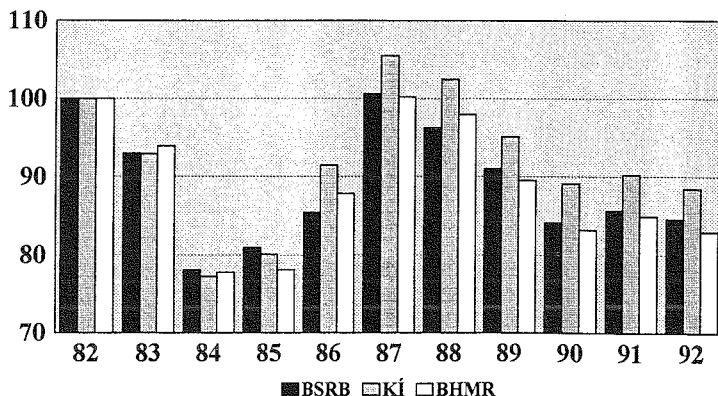
Meðaltal mánaðarlauna árin 1982-1992. Tölur árunna eru meðaltölur fyrir mars-maí nema fyrir árið 1985, þar er reiknað meðaltal af janúar-febrúar.

Ba.	Ár	T/D	Yl.	Öl.	Hl.	Ba.	Ár.	T/D	Yl.	Öl.	Hl.
BSRB	1982	8627	3248	672	12547	KÍ	1982	9563	2073	8	11644
	1983	14501	5663	1128	21292		1983	16060	3951	12	20023
	1984	17434	6705	1300	25439		1984	19125	4773	11	23909
	1985	21968	8429	1590	31987		1985	24108	7913	17	32038
	1986	31092	14953	2656	48701		1986	36901	12277	19	49197
	1987*	42413	20895	3649	66957		1987*	49289	16387	60	65736
	1988*	50675	23103	3972	77749		1988*	59807	20512	118	80437
	1989*	58354	25655	5059	89068		1989*	67630	24503	113	92246
	1990*	64562	26288	5029	95879		1990*	75807	25193	61	101061
	1991*	69396	33274	5812	108482		1991*	81031	30817	305	112153
	1992*	72683	30358	9464	112805		1992*	84249	31267	2986	118501

BHMR	1982	11569	3249	216	15034	* Tölurnar eru reiknaðar út úr vegnu meðaltali mánaðanna mars-maí fyrir hvert bandalag.
	1983	19646	6084	435	26165	
	1984	23301	7447	532	31280	
	1985	28424	8755	737	37916	Skýringar: Ba=bandalag
	1986	42869	16759	1453	61081	T/D= taxtalaun/dagvinnulaun
	1987*	56656	26331	1987	84974	Yl=yfirvinnulaun
	1988*	69188	26512	1854	97554	Öl=önnur laun
	1989*	76977	26800	2623	106400	Hl=heildarlaun.
	1990*	85598	32661	2498	120757	
	1991*	92263	45890	3902	142055	
	1992*	95586	51863	7278	154726	

Graf 4.3.1.

Kaupmáttur meðallauna miðað við 100 í mars-maí 1982



4.4. Framfærsluvísitala með grunn 1981:

Hér að neðan er yfirlit yfir framfærsluvísitöluna eins og hún er útgefin af Hagstofu Íslands.

Þessi grunnur er notaður í útreikningum KOS, þegar vegið er með framfærsluvísitölunni.

Framfærsluvísitala frá 1981 samkvæmt Hagstofu Íslands												
ÁRIMÁN	1	2	3	4	5	6	7	8	9	10	11	12
1981	100.00	101.62	104.67	109.41	109.77	115.70	118.30	119.61	124.26	127.53	131.48	138.68
1982	141.10	144.26	152.00	158.80	159.94	168.78	173.55	178.79	194.01	202.08	210.10	221.70
1983	230.91	241.93	267.21	285.36	298.50	327.16	339.98	362.52	365.21	376.52	386.85	391.62
1984	394.44	396.99	401.32	407.03	410.61	420.17	424.06	430.73	433.39	438.20	443.80	465.31
1985	485.44	502.11	515.73	524.38	535.42	545.31	558.46	575.28	590.24	603.27	616.60	632.52
1986	651.14	665.99	655.79	659.80	671.07	675.52	678.42	686.08	694.22	697.19	711.49	717.96
1987	734.63	745.43	756.46	766.98	776.35	791.92	805.77	825.82	835.19	848.96	876.12	893.43
1988	926.61	934.40	943.01	956.55	973.38	1006.90	1041.80	1063.40	1071.20	1074.80	1075.50	1077.50
1989	1095.50	1112.00	1142.50	1167.30	1190.30	1225.40	1233.90	1250.50	1275.90	1301.10	1320.70	1349.30
1990	1355.70	1377.80	1389.20	1393.40	1406.00	1415.70	1425.00	1429.40	1429.20	1433.10	1442.90	1446.40
1991	1455.50	1459.80	1463.30	1470.10	1487.70	1508.20	1518.00	1529.70	1538.90	1551.00	1557.50	1555.80
1992	1559.60	1566.10	1563.30	1563.20	1562.10	1567.60	1571.50	1571.50	1569.90	1570.90	1570.90	1579.10
1993	1597.50	1608.50	1610.40	1615.00	1618.80	1617.80						