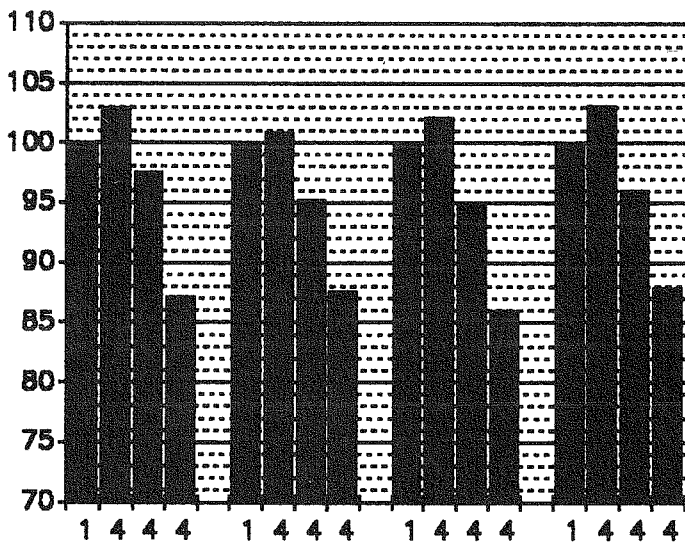


FRÉTTARIT KOS

Nr. 5

Mars 1990



Mars 1990

FRÉTTARIT K O S
Nr. 5

Útgefandi: Kjararannsóknarnefnd
Opinberra
Starfsmanna

Skrifstofa K O S Borgartúni 18 3.h.
105 REYKJAVÍK
SÍMI: (91) 62 60 30

SKYRINGAR :

Í ÞESSARI ÚTGAFU ERU STARFSMENN RÍKISINS, ÁSAMT STARFSMÖNNUM REYKJAVÍKURBORGAR. TIL STENDUR AÐ TAKA INN STARFSMENN ANNARRA BEJAR- OG SVEITARFÉLAGA SVO OG ADRA HÓPA LAUNÞEGA SEM TAKA LAUN HJA RÍKI OG SVEITARFÉLÖGUM.

Í ÞESSUM TALNASÖFNUM ER MIDAÐ VIÐ MÁNAÐARTÍMABIL. ALLAR LAUNATÖLUR ERU VEGNAR MEÐ FJÖLDA STÖÐUGILDA.

STÖÐUGILDI = FJÖLDI LAUNÞEGA Í FULLU STARFI
 TAXTALAUN = FÖST MANAÐARLAUN SAMKVÆMT TÓXTUM.
 YFIRV.L. = GREIDD LAUN FYRIR YFIRVINNU.
 ÖNNUR.L. = ÖLL ÖNNUR GREIDD LAUN Á LAUNASEÐLUM.
 HEILDANL. = SUMMAN AF TAXTALAUNUM YFIRVINNULAUNUM OG ÖÐRUM LAUNUM

HREINT
 TIMAKAUP = LAUN AN ORLOFS FYRIR DAGVINNU AÐ VIÐBETTUM HVERS KYNS AUKAGREIÐSLUM SVO SEM YFIRBORGUNUM, FÆDIS-, FERDA-, FATA- OG VERKFÆR- PENINGUM DEILT MEÐ DAGVINNUTÍMUM. ÞESSI STERÐ ER ÞVI HLUTUR DAGVINNU Í MEDALTÍMAKAUPI

ARSFJÖRDUNGSTÖLUR ERU UNNAR ÞANNIG AÐ TEKID ER ÞRIGGJA MÁNAÐA VEGID MEDALTAL AF TALNASÖFNUM HVERS FÉLAGS.

NOKKUR FÉLÖG INNAN BHMR VORU Í VERKFAILLI HLUTA AF MARS OG/ÉÐA APRÍL 1987 OG ÞURFTI ÞVI AÐ LEIÐRÉTTA VIÐKOMANDI MÁNUDI. ÞAÐ VAR GERT ÞANNIG AÐ TEKID VAR VEGID MEDALTAL LAUNATALNANNA MÁNDINN FYRIR VERKFAILL OG MÁNUÐINN EFTIR VERKFAILL OG ÞAÐ NOTAÐ. EFTIRTALIN FÉLÖG VORU LEIÐRÉTT: (VERKFAILLSMANUÐIRNIR ERU Í SVIGA)

FÉLAG BOKASAFNSFR. (APRÍL), FÉL.HASKM.HJÚKRUNARFR. (MARS, APR.)
 FÉL.ISL.NÁTTÚRUFR. (MARS, APR.) FÉL.ISL.SJÚKRAÞJ. (MARS, APR.)
 HIÐ ISL.KENNARAF.FRANH (MARS) HIÐ ISL.KENNARAF.GRUNNSK. (MARS)
 HIÐ ISL.KENNARAF.ALLS (MARS) MATVÆLAFRÆÐ.FÉL.ISL. (APRÍL)
 SÁLFR.FÉL.ISL. (MARS, APR.) STETTARF.ISL.FÉL.RAÐGJ. (MARS, APR.)
 IÐJUPJÁLFAF.ISL. (MARS, APR.) SAMTÖLUR FYRIR BHMR (MARS, APR.)

TÖLUM FYRIR FÉLAG HASKOLAMENNTAÐRA STARFSMANNA STJORNARRÁÐSINS VAR BREYTT FYRIR JANÚAR 1987 OG ÞER GERÐAR SAMBERILEGAR VIÐ FEBRÚAR 1987, VEGNA STOFNUNAR FÉLAGSINS Á ÞESSUM TÍMA.

Verkföll urðu hjá nokkrum félögum innan BHMR í apríl og maí 1989. Eins var farið með leiðréttingar og áður. Félögin voru DÍ, FB, FHH, FIF, FIN, FISÞ, HÍK/F, HÍK/G, HÍK/A, MNÍ, SÍ, SIF, SLÍR, OG II.

Fóstrur og Meinatæknar tóku sig út úr aðildarfélögum BSRB ríkisstarfsmanna og Starfsmannafélagi Reykjavíkurborgar. Nýjar talnaseriur eru frá og með þeim tíma fyrir þau félög. Ekki var byrjað á nýrri talnaröð fyrir þá hópa, þar sem þessir félög voru innanbörðs áður þ.e. hjá SFRH, SFRA, STRHE og STRV og veldur það breytingu til lækunar á kaupmætti hjá þeim hópum.

KJARARANNSÖKNARNEFND OPINBERRA STARFSMANNA (KOS) skipa nú í Mars 1990 eftirtaldir aðilar:

Fulltrúar atvinnurekenda:	Fulltrúar launafólks:
Birgir Guðjónsson	Birgir Björn Sigurjónsson
Óskipað	Björn Arnórsson
Jón G. Kristjánsson	Einar Ólafsson
Logi Guðbrandsson	Haraldur Hannesson
Páll Guðjónsson	Eiríkur Jónsson

FRAMKVÆMDASTJÖRN KOS skipa:
 Birgir Guðjónsson, Björn Arnórsson, Eiríkur Jónsson og Jón G. Kristjánsson

FRAMKVÆMDASTJÖRI KOS er: Geir Thorsteinsson.

HEIMILISFANG KOS ER:

KJARARANNSÖKNARNEFND OPINBERRA STARFSMANNA
 BORGARTÚNI 18 3.H.
 105 REYKJAVÍK

SÍMINN HJÁ K O S ER 91 - 62 60 30.

EFTIRPRENTUN ER HEIMIL ÚR RITINU, ENDA SÉ HEIMILDAR GETID.

EFNISYFIRLIT:

Skýringar.....	3
KOS nefndarskipan o.fl.....	4
Efnisyfirlit.....	5
Frá framkvæmdastjórn KOS.....	6
Lög og reglugerð.....	7 - 8
Listi yfir stéttarfélög.....	9
Mánaðartölur um stöðugildi, laun og kaup- mátt taxtalauna :	
BSRB ríkisstarfsmenn.....	10 - 18
BHMR hópar.....	19 - 23
Kí.....	24 - 25
REYKJAVÍKURBORG.....	26 - 29
Bandalögin.....	30 - 31
Ýmsir hópar ríkisstarfsmanna.....	32 - 34
Arsfjórðungstölur um kaupmátt launa ásamt súlurítum:	
BSRB ríkisstarfsmenn.....	35 - 41
BHMR hópar.....	42 - 45
Kí.....	46 - 47
REYKJAVÍKURBORG.....	48 - 51
Bandalögin.....	52 - 53
Ýmsir hópar ríkisstarfsmanna.....	54 - 55
Framfærsluvisitalan frá 1981.....	56
Efnisyfirlit.....	57

Frá Framkvæmdastjórn K O S:

Í þessu hefti KOS eru upplýsingar á sama grunni og unnið hefur verið á síðustu árin af Launaskrifstofu Fjármálaráðuneytisins og Launaskrifstofu Reykjavíkurborgar. Afram mun haldið að birta upplýsingar á þessum grundvelli samtímis og KOS leggur áherslu á að gera á honum ýmsar breytingar.

Kosturinn við þessar upplýsingar, umfram þær, sem fást við kaup og kjör annarra, en þeirra er vinna hjá ríkinu og borg, er að hér er ekki um úrtað að ræða. Upplýsingarnar ná til launa allra þeirra er vinna hjá ríki og borg og allra launa, sem skráð eru hjá Launaskrifstofu Ríkisins og Launaskrifstofu Reykjavíkurborgar. Þar með er ekki sagt að efnið sé gallalaust;

- * Tölurnar sýna laun allra þeirra, sem í starfi eru á hverjum tíma. Þetta getur valdið erfiðleikum í samanburði. T.d. lækka meðaldagvinnulaun flestra starfsmannafélaga yfir sumarmánuðina, vegna þess, að sumarafleysingafólkið kemur inn í lögstu starfsaldursþrepin. Þetta skeður ekki hjá t.d. H.F.I. og verður að taka tillit til þess, þá sumarmánuðirnir eru bornir saman.
- * Meðallaun - og kaupmáttur þeirra - einkum lítilla hópa - geta breyst mjög mikið við það eitt, að nokkrir starfsmenn í efsta starfsaldursþrepi fara á eftirlaun en nýliðar taka við.
- * Lítið er hægt að segja um yfirborganir út frá þessu efni. Yfirborganir eru til hjá ríki og borg, en umfang þeirra er óljóst.
- * Stærsta vandamálið er þó að ná í samanburðarhæfar tölur um laun og aðrar greiðslur til launþega á almennum vinnumarkaði og þeirra opinberu starfsmanna sem ekki taka laun frá launaskrifstofu ríkisins. Framkvæmdastjórn KOS hefur, í samráði og samvinnu við Kjararannsóknarnefnd ASÍ/VSÍ og fleiri aðila, unnið nýjan gagnagrunn til söfnunar á launaupplýsingum. Þar með er mögulegt að safna öllum launum upp á sambærilegu formi og vinna upplýsingar úr þeim. Nú þegar er byrjað að undirbúa þessa vinnslu með forritun í launakerfunum.
- * KOS vinnur að því að finna leiðir til að endurbæta talnaefnið með tilliti til m.a. ofantalinna þátta.
- * ATH. Notendum heftisins er bent á að geyma þetta hefti, því sennilega munu yfirlitsráðirnar ekki birtast á sama hátt á næstunni.

KJARARANNSÖKNARNEFND OPINBERRA STARFSMANNA starfar samkvæmt 34. grein laga nr. 94 útg. 31.12.1986 um kjarasamninga opinberra starfsmanna, sem hljóðar þannig:

" Á vegum þeirra aðila, sem lög þessi taka til, starfi nefnd er annist kjararannsóknir og aðra upplýsingaöflun vegna kjarasamninga.

Nefndin skal skipuð jafnmörgum fulltrúum stéttarfélaganna og vinnuveitenda samkvæmt nánari ákvæðum í reglugerð sem sett skal að fengnum tillögum heildarsamtaka opinberra starfsmanna og Sambands íslenskra sveitarfélaga.

Nefndin setur sér starfsreglur, m.a. um starfssvið og starfshætti.

Kostnaður við störf nefndarinnar greiðist úr ríkissjóði."

Á grundvelli laganna var gefin út svohljóðandi reglugerð:

"

REGLUGERÐ

UM

NEFND UM KJARARANNSÖKNIR OPINBERRA STARFSMANNA

1. gr.

Nefnd um kjararannsóknir opinberra starfsmanna starfar í þeim tilgangi að safna saman og miðla upplýsingum um kjör starfsmanna hjá opinberum aðilum, kjör annarra launþega og þróun launa og kjaramála almennt til þeirra, sem að nefndinni standa, sbr. 4. gr.

2. gr

Nefndin aflar upplýsinga um kjör, sbr. 1.gr., sem hér segir:

1. Með söfnun, skipulagningu og skráningu upplýsinga um laun og önnur kjaraatriði opinberra starfsmanna, sem aðilar að nefndinni leggja henni til.
2. Með öflun og skipulegri skráningu upplýsinga frá öðrum aðilum, sem stunda reglubundnar kjararannsóknir.
3. Með gerð sérstakra athugana, sem aðilar að nefndinni ákveða hverju sinni.

3. gr.

Nefndin miðlar upplýsingum til þeirra opinberu vinnuveitenda, sem láta nefndinni í té upplýsingar og stéttarfélaganna starfsmanna þeirra með reglulegum skýrslum og sérstökum skýrslum eftir því sem við á.

Allar upplýsingar, sem safnað er eða unnar eru á vegum nefndarinnar, aðrar en þær, sem nefndin birtir, sbr. fyrri málsgrein, eru trúnaðarmál og er einstökum aðilum að nefndinni óheimilt að notfæra sér þær eða birta án samþykkis allra nefndarmanna.

4. gr.

Nefndin er skipuð 10 fulltrúum. Tveir fulltrúar vinnuveitenda eru tilnefndir af fjármálaráðherra, einn af launanefnd sveitarfélaga, einn af Reykjavíkurborg og einn úr hópi forsvarsmanna sjálfseignarstofnana samkvæmt nánari ákvörðun fjármálaráðherra.

Þrjú fulltrúar launþega skulu tilnefndir af BSRB, einn af BHMR og einn af KÍ.

Nefndin skiptir með sér verkum og ákveður sér framkvæmdastjórn.

5. gr.

Nefndin setur sér starfsreglur, m.a. um starfssvið og starfshætti og ákveður nánar með hvaða hætti hún hagar störfum að verkefnum skv. 1.-3. grein. Nefndin skal kosta kapps um að skapa einhug um laun þeirra verkefna sem henni eru falin. Ákvarðanir um verkefni og birtingu á niðurstöðum verða ekki teknar með afli atkvæða.

6. gr.

Kostnaður vegna starfa nefndarinnar greiðist úr ríkissjóði samkvæmt fjárveitingum í fjárlögum. Nefndin ræður sér sjálf starfsmenn.

7. gr.

Reglugerð þessi er sett samkvæmt lögum nr. 94 31. desember 1986, um kjarasamninga opinberra starfsmanna og öðlast þegar gildi.

Fjármálaráðuneytið 7. júlí 1987

Þorsteinn Pálsson (sign)
Indriði H. Þorláksson (sign)

LISTI YFIR STETTARFÉLÖG

BSRB RÍKISSTARFSMENN

FÉLAG FLUGMALASTARFSMANNA RÍKISINS
 FÉLAG ÍSLENSKRA SIMAMANNA SKRIFSTH.
 FÉLAG ÍSLENSKRA SIMAMANNA TÆKNIHÖPUR
 FÉLAG ÍSLENSKRA SIMAMANNA ALLS
 FÉLAG STARFSMANNA STJORNARRÁÐSINS
 FOSTRUFÉLAG ÍSLANDS
 HJUKRUNARFÉLAG ÍSLANDS
 LANDSSAMBAND LÖGREGLUMANNA
 LJOSMÉDRAFÉLAG ÍSLANDS
 MEINATEKNAFÉLAG ÍSLANDS
 POSTMANNAFÉLAG ÍSLANDS
 STARFSMANNAFÉLAG RÍKISÚTVARPSINS
 STARFSMANNAFÉLAG SJONVARPSINS
 STARFSMANNAFÉLAG RÍKISSTOFNANA STARFSM. ALÞING
 STARFSMANNAFÉLAG RÍKISSTOFNANA S
 STARFSMANNAFÉLAG RÍKISSTOFNANA H
 STARFSMANNAFÉLAG RÍKISSTOFNANA ALLS
 TOLLVÁRÐAFÉLAG ÍSLANDS
 BSRB FÉLÖGIN HJA RÍKINU, ALLS

BHMR

BHMR HÖPUR 1 (HIK/G)
 BHMR HÖPUR 2 (HIK/F)
 BHMR HÖPUR 3 (FH, KKHI, FTK)
 BHMR HÖPUR 4 (FHH, FISP, II, SIF)
 BHMR HÖPUR 5 (LFI, DI, SI, PI)
 BHMR HÖPUR 6 (KPVH, FB, SLIR, FHSS)
 BHMR HÖPUR 7 (KA, FIN, MNI, FF)
 BHMR HÖPUR 8 (FB, FIF, UTG)
 BHMR FÉLÖGIN, ALLS

K. I.

KENNASAMBAND ÍSLANDS GRUNNSKÓLAR
 KENNASAMBAND ÍSLANDS FRAMHÁLDSSKÓLAR
 KENNASAMBAND ÍSLANDS, ALLS

REYKJAVÍKURBORG

ST. RV. SKRIFSTOFUHÖPUR
 ST. RV. TÆKNIHÖPUR
 ST. RV. HEILBRIGÐISHÖPUR
 STARFSMANNAFÉLAG REYKJAVÍKURBORGAR
 ST. RV. HASKÓLAHÖPUR
 MEINATEKNAFÉLAG ÍSLANDS (R. BORG)
 FOSTRUFÉLAG ÍSLANDS (R. BORG)
 HJUKRUNARFÉLAG ÍSLANDS

YMSIR HÖPAR RÍKISSTARFSMANNA

FÉLAG ÍSLENSKRA FLUGUMFERÐARSTJÓRA
 STARFSMANNAFÉLAG SINFÓNÍUHLJÓMSVEITAR ÍSLANDS
 TÆKNIFRÉDINGAFÉLAG ÍSLANDS
 KJARAFÉL. ÖFINB. STARFSM. I VERKFR. FÉL. ÍSLANDS
 UTAN FÉLAGA RAÐHERRARÖÐUN

BSRB RÍKISST. LAUNAUPPHÆDIR OG KAUPMATTUR TAXTALAUNA MEÐ JANÚAR 1987 = 100

FÉLAG	MAN	ÁR	STÖDU- GILDI	TAXTA- LAUN	YFIRV. LAUN	ÖNNUR LAUN	HEILDAR- LAUN	KAUPM. TAXTAL.
FÉLAG FLUGMÁLASTARFSMANNA RÍKISINS								
1	1987	1	115.51	34302	25002	5226	64530	100.00
2	1987	1	112.59	40223	23956	5467	69646	115.56
3	1987	1	114.51	40109	24693	5135	71780	113.55
4	1987	1	114.51	40125	24987	4869	69977	112.04
5	1987	1	114.65	39688	30888	5863	76433	109.48
6	1987	1	121.67	40928	29338	5705	76023	116.68
7	1987	1	127.38	41073	24557	4491	70082	109.17
8	1987	1	121.38	41635	27993	5427	75055	107.97
9	1987	1	112.44	42328	22506	4272	69110	108.54
10	1987	1	117.97	45387	29043	5186	79616	114.50
11	1987	1	117.49	45466	28305	7097	80868	111.14
12	1987	1	117.33	45506	20750	5724	71988	109.08
1	1988	1	115.52	47016	30169	7879	85064	108.67
2	1988	1	116.20	47582	28144	7083	82809	109.06
3	1988	1	114.52	48660	30837	7639	87136	116.51
4	1988	1	111.75	48896	23345	7632	79873	109.47
5	1988	1	116.46	48607	34899	8045	91551	116.95
6	1988	1	127.69	51722	34519	7934	94175	110.01
7	1988	1	128.38	51877	34215	7863	93955	106.64
8	1988	1	127.79	52195	32939	7674	92808	105.12
9	1988	1	116.60	53052	29255	8141	90448	106.07
10	1988	1	115.40	53266	34381	8656	96303	106.14
11	1988	1	115.17	53295	36612	9052	98959	106.13
12	1988	1	115.81	53304	31456	8471	93231	105.95
1	1989	1	112.10	53342	39037	11068	103447	104.28
2	1989	1	111.43	53763	41142	8978	103883	103.54
3	1989	1	114.49	53753	38558	9408	101719	100.76
4	1989	1	117.31	57719	42931	10672	111322	105.90
5	1989	1	123.41	57474	39566	11069	108109	103.41
6	1989	1	130.00	57471	32268	8014	97753	100.44
7	1989	1	132.99	57060	36706	8283	102049	99.04
8	1989	1	133.37	57171	37769	9110	104050	97.91
9	1989	1	122.25	59937	40763	8872	109572	100.61
10	1989	1	119.33	60266	37776	9468	107510	99.20
11	1989	1	116.50	61710	35780	10471	107961	100.07
12	1989	1	116.40	61808	37478	9884	109170	98.10
FÉLAG ÍSLENSKRA SÍMAMANNA SKRIFSTH.								
1	1987	1	465.48	35590	13780	1395	50765	100.00
2	1987	1	466.58	40262	13371	1764	55397	111.49
3	1987	1	462.92	40288	13259	1589	55136	109.93
4	1987	1	466.97	40454	18366	1697	60517	108.87
5	1987	1	477.32	39993	17169	1352	58514	106.33
6	1987	1	528.17	39732	14066	1464	55262	103.56
7	1987	1	550.06	39607	12383	1433	53423	101.46
8	1987	1	522.51	41612	14184	1443	57239	104.01
9	1987	1	467.39	42549	15070	1649	59268	105.16
10	1987	1	459.48	45571	18070	1907	65548	110.80
11	1987	1	468.09	45073	18311	2147	65531	106.19
12	1987	1	486.29	44963	19324	2031	66323	103.89
1	1988	1	464.09	46691	20636	2006	69333	104.01
2	1988	1	463.69	47136	18830	2388	68334	104.13
3	1988	1	464.92	47551	17597	1977	67112	104.08
4	1988	1	455.82	47677	23442	1899	73018	102.88
5	1988	1	489.86	47107	18063	2073	67243	99.89
6	1988	1	530.37	51476	21345	2309	75130	105.53
7	1988	1	541.46	51618	17921	2076	71611	102.27
8	1988	1	532.12	51647	19511	2116	73274	100.25
9	1988	1	484.20	52608	19646	2270	74524	101.37
10	1988	1	471.30	52849	19441	2275	74566	101.50
11	1988	1	469.48	53138	19623	2591	75355	101.98
12	1988	1	475.88	53136	22340	2396	77872	101.79
1	1989	1	463.95	52983	21035	2032	76050	99.83
2	1989	1	461.24	53455	18119	2444	74018	99.23
3	1989	1	444.52	54225	17277	2331	73833	97.97
4	1989	1	450.34	56742	25492	2112	84346	100.34
5	1989	1	462.05	56599	20907	2485	79991	98.15
6	1989	1	501.92	56239	17894	1960	76093	94.73
7	1989	1	509.78	56096	17482	2051	75629	93.84
8	1989	1	505.14	56485	17353	2205	76043	93.24
9	1989	1	464.05	58815	19303	2417	80535	95.15
10	1989	1	459.24	59861	20961	2529	83351	94.97
11	1989	1	451.37	60811	22549	2771	86131	95.04
12	1989	1	448.91	60782	23257	2435	86474	92.98

BSRB RÍKISST. LAUNAUPPHÆDIR OG KAUPMATTUR TAXTALAUNA MEd JANUAR 1987 = 100

FÉLAG	MÁN	ÁR	STÖÐU- GILDI	TAXTA- LAUN	YFIRV. LAUN	ÖNNUR LAUN	HEILDAR- LAUN	KAUPM. TAXTAL.
FÉLAG ÍSLENSKRA SIMAMANNA TEKNIHÖPUR								
1	1987		392.15	39987	34335	2829	77151	100.00
2	1987		388.12	45265	35728	3050	84043	111.56
3	1987		388.44	45084	35377	2811	83272	109.49
4	1987		389.29	45044	48274	3106	96424	107.90
5	1987		406.00	45093	36320	2500	83913	106.71
6	1987		406.40	45940	38897	2844	87681	106.58
7	1987		406.26	45909	34503	2483	82895	104.67
8	1987		399.12	47665	40098	2480	90243	106.04
9	1987		390.23	47870	37993	2987	88850	105.30
10	1987		375.93	50690	43670	3014	97374	109.69
11	1987		366.00	50887	44372	3197	98456	106.71
12	1987		362.09	50736	37509	2865	91110	104.33
1	1988		363.14	52492	39093	3102	94687	104.07
2	1988		364.63	52996	40176	3453	96625	104.20
3	1988		370.39	53037	36163	3428	92628	103.33
4	1988		368.58	53107	40009	3037	96153	102.00
5	1988		379.71	53276	34900	2971	91147	100.55
6	1988		378.39	58080	44208	3657	105945	105.97
7	1988		378.07	58058	37094	3505	98657	102.38
8	1988		365.54	58485	39636	3627	101748	101.04
9	1988		359.72	58799	42861	3803	105463	100.84
10	1988		371.02	58449	41132	4099	103680	99.91
11	1988		371.58	59255	39129	4661	103045	101.22
12	1988		375.71	59134	38476	4478	102088	100.82
1	1989		355.54	59904	43689	4897	108490	104.82
2	1989		355.47	59257	43096	4679	108032	99.99
3	1989		389.18	59688	36852	3908	100442	95.77
4	1989		386.11	61948	49908	3935	115794	97.52
5	1989		386.99	61756	42908	4035	107849	95.32
6	1989		399.29	62516	47675	3794	113885	93.37
7	1989		398.10	62708	41161	3371	107240	93.37
8	1989		390.91	62635	41705	3344	107684	92.02
9	1989		382.29	64508	49505	3796	117809	92.89
10	1989		376.02	64700	38577	3763	107040	91.36
11	1989		376.14	65719	44291	4465	114475	91.42
12	1989		378.95	66076	40018	3658	109752	89.97
FÉLAG ÍSLENSKRA SIMAMANNA ALLS								
1	1987		857.63	37601	23179	2051	62831	100.00
2	1987		854.70	42534	23523	2348	68405	111.48
3	1987		851.36	42476	23351	2147	67974	109.71
4	1987		856.26	42541	31963	2338	76842	108.37
5	1987		833.32	42337	25971	1880	70188	106.54
6	1987		934.57	42432	24864	2064	69360	104.68
7	1987		956.32	42284	21780	1879	65943	102.53
8	1987		921.63	44233	25406	1892	71531	104.65
9	1987		857.62	44970	25500	2258	72728	105.20
10	1987		835.41	47875	29590	2405	79870	110.18
11	1987		834.09	47624	29747	2608	79979	106.20
12	1987		848.38	47428	27085	2387	76900	103.72
1	1988		827.23	49238	28738	2487	80463	103.82
2	1988		828.32	49716	28227	2857	80800	103.95
3	1988		835.31	49984	25829	2620	78433	103.56
4	1988		824.40	50105	30849	2408	83362	102.34
5	1988		869.57	49801	25415	2465	77681	99.96
6	1988		908.76	54226	30865	2867	87958	105.22
7	1988		919.53	54266	25804	2664	82734	101.77
8	1988		897.86	54432	27706	2731	84869	100.01
9	1988		843.92	55247	29541	2923	87711	100.76
10	1988		842.32	55316	28995	3078	87389	100.55
11	1988		841.06	55840	28241	3506	87587	101.44
12	1988		825.59	57866	29470	3316	88572	101.15
1	1989		829.49	60333	31018	3295	90346	99.93
2	1989		826.71	64622	29161	3432	86955	99.20
3	1989		833.70	66772	26415	3067	89625	97.08
4	1989		833.45	91145	36783	2955	98863	98.99
5	1989		836.04	88956	30584	3184	98363	96.77
6	1989		901.21	99020	31089	3273	92288	94.10
7	1989		890.88	88995	27865	2730	89249	93.41
8	1989		896.05	91688	27977	2602	89347	93.44
9	1989		846.34	61387	32945	3040	97375	94.00
10	1989		835.26	62039	28891	3085	94015	93.16
11	1989		827.51	63042	32432	3541	99015	93.26
12	1989		827.86	63205	30929	2995	97129	91.52

BSRB RIKISST. LAUNAUPPHEDIR OG KAUPMATTUR TAXTALAUNA MED JANUAR 1987 = 100

FÉLAG	MÁN	ÁR	STÖÐU- GILDI	TAXTA- LAUN	YFIRV. LAUN	ÖNNUR LAUN	HEILDAR- LAUN	KAUPM. TAXTAL.
FÉLAG STARFSMANNA STJORNARRÁÐSINS								
1	1987	229.16	388119	12906	248	51973	100.00	
2	1987	227.09	456139	17375	310	63304	115.81	
3	1987	231.74	454339	16016	376	61831	113.68	
4	1987	228.69	45586	18966	355	64907	112.48	
5	1987	232.78	456111	18659	423	64693	111.43	
6	1987	235.31	45602	13619	403	59624	108.33	
7	1987	232.88	45699	14900	445	61044	107.33	
8	1987	230.59	47143	14392	364	61899	108.03	
9	1987	231.32	48359	16777	388	65504	109.58	
10	1987	234.88	51798	20830	377	73005	115.46	
11	1987	237.56	51884	21103	373	73360	112.07	
12	1987	240.46	51849	23065	369	75283	109.83	
1	1988	241.63	53872	18702	435	73009	110.02	
2	1988	242.94	55038	24560	433	80031	111.47	
3	1988	245.06	55372	21023	433	76328	111.12	
4	1988	242.79	55235	18164	270	73669	109.28	
5	1988	255.07	55354	20643	462	76459	107.62	
6	1988	273.40	58928	21304	449	80681	110.45	
7	1988	273.57	59175	22598	532	82305	107.49	
8	1988	265.93	59558	20415	537	80510	105.99	
9	1988	249.74	60349	23739	474	84562	106.62	
10	1988	252.08	60572	24987	508	86067	106.65	
11	1988	250.14	60858	24348	533	85739	107.09	
12	1988	250.50	61047	24990	472	86509	107.22	
1	1989	249.14	61038	21975	513	83526	105.44	
2	1989	249.96	61673	24455	497	86625	104.96	
3	1989	252.06	62199	24332	475	87006	103.03	
4	1989	249.58	64339	23109	461	87909	104.31	
5	1989	253.66	63859	23976	516	88351	101.53	
6	1989	262.81	63327	25640	515	89482	97.80	
7	1989	262.75	63285	21656	553	85494	97.06	
8	1989	253.44	64108	19816	454	84378	97.02	
9	1989	239.54	66617	24902	612	92136	98.81	
10	1989	243.89	66854	25956	627	93432	97.24	
11	1989	248.65	67947	28635	594	97176	97.36	
12	1989	253.77	67716	25468	563	93747	94.97	
FÖSTRUFÉLAG ÍSLANDS								
4	1989	23.30	62274	13023	360	75657	100.00	
5	1989	24.61	62321	13094	399	75814	98.14	
6	1989	26.38	63344	13155	723	77222	96.90	
7	1989	29.39	63274	9117	286	72677	96.12	
8	1989	34.81	62859	9685	477	73021	94.22	
9	1989	40.64	62507	10447	930	73884	91.83	
10	1989	41.81	62275	13898	1399	77572	89.72	
11	1989	40.98	64156	13606	988	78750	91.06	
12	1989	44.02	63908	10563	1074	75545	88.78	
HJUKRUNARFÉLAG ÍSLANDS								
1	1987	485.37	46850	14224	6316	67390	100.00	
2	1987	479.26	46942	13429	5402	65773	98.74	
3	1987	490.08	50491	14615	6723	71834	104.66	
4	1987	490.88	53621	23331	6990	83342	109.69	
5	1987	504.66	53719	18092	7091	78902	108.59	
6	1987	504.66	55824	19108	6070	81002	110.39	
7	1987	491.61	56113	16659	5212	77984	109.20	
8	1987	475.22	56092	19325	5489	80906	106.51	
9	1987	478.00	55925	9312	2807	68044	105.00	
10	1987	491.37	60297	20786	7711	88794	111.37	
11	1987	500.09	60260	20472	7446	88178	107.85	
12	1987	487.27	60670	5264	1242	67176	106.48	
1	1988	493.52	62415	20853	8316	91584	105.62	
2	1988	496.29	63686	18151	7298	89135	106.87	
3	1988	500.07	63846	23100	7566	94512	106.16	
4	1988	482.20	63912	17303	3705	84920	104.77	
5	1988	502.93	63912	26054	7378	97344	102.96	
6	1988	508.52	70506	22840	7476	100822	109.80	
7	1988	501.37	70762	20991	6555	98308	106.51	
8	1988	480.31	70986	20762	6916	98664	104.67	
9	1988	483.69	70169	10188	3756	84113	102.71	
10	1988	479.73	70421	19908	8643	98972	102.74	
11	1988	487.52	70549	20293	8499	99341	102.86	
12	1988	484.91	70767	22699	8769	102235	102.98	
1	1989	504.10	71082	18943	8624	98649	101.74	
2	1989	497.92	71331	17136	7906	96373	100.58	

BSRB RÍKISST. LAUNAUPPHÆDIR OG KAUPMATTUR TAXTALAUNA MED JANUAR 1987 = 100

FÉLAG MÁN ÁR	STÓÐU- GILDI	TAXTA- LAUN	YFIRV. LAUN	ÖNNUR LAUN	HEILDAR- LAUN	KAUPM. TAXTAL.
HJÚKRUNARFÉLAG ÍSLANDS						
3 1989	499.72	719114	26343	8602	106859	98.70
4 1989	500.41	72059	18730	8681	99470	96.80
5 1989	502.99	74220	24910	8639	107769	97.77
6 1989	502.61	74643	19452	7689	101784	95.51
7 1989	482.31	75602	19010	7351	101963	96.08
8 1989	482.91	75685	20005	7228	102918	94.90
9 1989	481.91	75767	19238	7909	102914	93.12
10 1989	493.78	77954	19031	9148	106133	93.95
11 1989	491.95	77828	20038	8837	106703	92.40
12 1989	488.69	78115	23500	9579	111194	90.78
LANDSSAMBAND LÖGREGLUMANNA						
1 1987	617.30	40566	40666	12477	93709	100.00
2 1987	619.62	46054	35873	12317	94244	111.88
3 1987	622.62	45966	37109	11347	94422	110.04
4 1987	632.97	45951	39519	12052	97522	108.50
5 1987	658.04	45645	47891	12452	105988	106.47
6 1987	741.35	45569	49457	10894	105920	104.21
7 1987	747.90	45469	36897	9990	92356	102.19
8 1987	731.02	45859	39915	11002	96776	100.56
9 1987	680.08	46721	38980	10765	96466	101.31
10 1987	660.56	50831	42697	12653	106181	108.43
11 1987	690.14	50296	45337	13222	108885	103.96
12 1987	682.83	50503	36031	11980	98514	102.37
1 1988	695.11	50005	49034	16774	117813	101.64
2 1988	673.87	54664	41348	14710	111522	107.49
3 1988	673.87	55901	39801	13575	108808	106.45
4 1988	666.84	55432	46479	15124	117237	105.29
5 1988	668.76	55614	48721	13683	112731	102.93
6 1988	668.62	55297	47440	15458	121189	104.84
7 1988	755.00	58238	43339	14655	116828	101.23
8 1988	761.53	58614	43375	13913	120402	99.82
9 1988	740.53	60045	43714	15411	119174	101.51
10 1988	676.57	60478	39875	15766	116150	101.90
11 1988	674.18	60192	46259	17631	124131	101.35
12 1988	676.76	60834	38116	15588	114535	102.24
1 1989	635.54	61367	54859	21205	137431	101.44
2 1989	636.15	61733	46056	17631	125420	100.54
3 1989	641.24	62258	42332	16253	120843	98.68
4 1989	640.99	64128	50876	19689	134693	99.49
5 1989	661.83	63889	49558	17570	131017	97.20
6 1989	747.88	62116	47146	15941	125203	91.80
7 1989	754.86	62001	43986	15293	121280	91.00
8 1989	742.15	62413	44687	14993	122093	90.39
9 1989	674.31	65380	44830	16982	127192	92.80
10 1989	646.08	66124	40882	17857	124863	92.04
11 1989	642.85	68155	43931	19535	131621	93.45
12 1989	640.10	68408	38633	17269	124310	91.81
LJOSMÉDRAFÉLAG ÍSLANDS						
1 1987	64.94	41740	7392	7022	56154	100.00
2 1987	66.22	45741	7376	6399	59516	108.00
3 1987	66.45	50017	7342	8566	65925	116.37
4 1987	67.14	52742	21479	7826	82047	121.03
5 1987	67.10	52709	13598	8361	74668	119.49
6 1987	71.36	54249	14792	6717	75758	120.57
7 1987	73.20	54141	11510	6654	72305	118.26
8 1987	72.67	54324	11730	6417	72471	115.78
9 1987	67.24	54569	6986	3099	64654	114.99
10 1987	70.49	58571	12250	8937	79758	121.43
11 1987	69.11	58850	12442	9063	80355	118.22
12 1987	69.42	59012	3532	1629	64173	116.25
1 1988	71.04	60506	12507	9806	82819	114.93
2 1988	68.82	61763	11526	9513	82802	116.34
3 1988	70.59	62663	15060	9134	86857	116.95
4 1988	65.61	62127	15995	4475	82597	114.31
5 1988	67.80	66318	24183	9297	95598	112.32
6 1988	70.97	67767	18404	8351	94522	118.45
7 1988	74.34	67767	14337	8579	90683	114.49
8 1988	70.60	68776	16988	7617	93105	113.42
9 1988	66.29	68830	7261	4106	79615	112.13
10 1988	66.05	67846	12136	10861	90843	111.10
11 1988	65.85	68014	14218	10175	92407	111.30
12 1988	66.94	68062	20160	9562	97784	111.17
1 1989	68.32	67872	14081	10413	92366	109.04

BSRB RÍKISST. LAUNAUPPHÆDIR OG KAUPMATTUR TAXTALAUNA MÆÐ JANUAR 1987 = 100

FÉLAG MÁN ÁR	STÖÐU- GILDI	TAXTA- LAUN	YFIRV. LAUN	ÖNNUR LAUN	HEILDAR- LAUN	KAUPM. TAXTAL.
LJOSMÉDRAFÉLAG ÍSLANDS						
2 1989	66.16	68087	12065	9766	89918	107.76
3 1989	65.27	68548	27827	9940	106315	105.60
4 1989	65.04	70614	17080	10570	98264	106.47
5 1989	65.48	70526	23145	10259	103930	104.28
6 1989	70.64	70628	12872	8617	92117	101.44
7 1989	71.55	70537	11787	8305	90629	100.61
8 1989	74.69	70399	14393	8662	93454	99.08
9 1989	70.12	72781	13525	9482	95788	100.40
10 1989	66.96	72780	11515	11142	95437	98.48
11 1989	66.94	73676	12509	11162	97847	98.18
12 1989	66.80	74009	23734	11333	109076	96.54
MEINATÆKNAFÉLAG ÍSLANDS						
4 1989	94.33	67950	29030	7740	104720	100.00
5 1989	94.33	69289	29602	7893	106784	100.00
6 1989	101.89	68898	27009	7621	103528	96.59
7 1989	103.57	69848	27506	7907	108326	97.24
8 1989	103.96	70639	28329	7862	108530	97.04
9 1989	101.08	72218	28636	7988	106536	97.23
10 1989	104.19	73731	28636	8214	108842	97.33
11 1989	106.90	73716	32723	8214	114670	97.88
12 1989	108.60	73567	31130	7314	112160	95.88
			28842	9963	112372	93.66
POSTMANNAFÉLAG ÍSLANDS						
1 1987	613.63	32545	22929	1785	57259	100.00
2 1987	617.91	36746	14055	1918	52719	111.27
3 1987	617.10	36736	13446	1867	52049	109.62
4 1987	620.21	37331	15940	2017	55338	110.01
5 1987	689.27	36857	15795	962	53614	107.16
6 1987	815.90	36882	10161	825	47868	105.13
7 1987	824.04	36771	11184	904	48859	103.01
8 1987	806.14	37048	11286	888	49222	101.27
9 1987	641.51	38418	15345	1093	54856	103.83
10 1987	668.27	41254	18264	2059	51577	109.69
11 1987	682.19	41160	18679	2018	61857	106.05
12 1987	732.46	40899	22750	1911	65560	103.33
1 1988	681.16	42239	26685	1996	70920	102.90
2 1988	685.92	43122	18330	2319	63771	104.17
3 1988	689.33	43344	18064	2118	63526	103.75
4 1988	678.91	43345	19438	2117	64900	102.29
5 1988	745.21	42945	16060	1008	60013	99.59
6 1988	862.95	45927	15260	1114	62301	102.96
7 1988	868.44	46048	13739	1281	61068	99.77
8 1988	841.03	46329	13385	1146	60860	98.34
9 1988	704.24	47948	16808	1205	65961	101.04
10 1988	710.10	47790	19331	2289	69410	100.37
11 1988	720.83	47972	18447	2340	68759	100.68
12 1988	858.73	47111	19701	2022	68834	98.69
1 1989	720.94	48092	30000	2482	80574	99.09
2 1989	721.59	48207	18672	2595	69474	97.86
3 1989	729.80	48617	14822	2175	65614	96.05
4 1989	735.10	52175	20501	2592	75268	100.89
5 1989	748.23	51776	15601	1081	68458	99.19
6 1989	899.57	50284	14974	964	62322	93.63
7 1989	922.15	50199	13053	1140	64395	91.83
8 1989	893.48	50885	14258	1294	66437	91.85
9 1989	755.67	54165	16709	1278	67152	91.82
10 1989	735.26	54669	19715	2663	77047	91.85
11 1989	734.23	55760	21104	2991	79855	95.30
12 1989	860.01	55097	20882	2131	78110	92.17
STARFSMAFFÉLAG RÍKISÚTVARPSINS						
1 1987	87.92	38175	16055	1217	55447	100.00
2 1987	84.95	45614	15838	1571	63023	117.76
3 1987	92.12	45422	14825	1348	61595	115.55
4 1987	92.68	45782	22978	1648	70408	114.87
5 1987	97.37	45341	25047	1675	72063	112.39
6 1987	124.26	44638	15528	1607	61773	108.47
7 1987	121.17	44808	15028	1477	61313	107.01
8 1987	120.20	46780	14051	1782	62613	109.01
9 1987	101.42	47616	16658	1924	66198	109.71
10 1987	103.59	50787	19174	2291	72252	115.12
11 1987	111.47	50600	24210	3753	78563	111.14
12 1987	106.12	50435	10469	1398	62302	108.63
1 1988	104.96	52318	19132	2423	73873	108.65

BSRB RIKISST. LAUNAUPPHÆDIR OG KAUPMATTUR TAXTALAUNA MED JANÚAR 1987 = 100

FÉLAG	MAN	AR	STÖDU- GILDI	TAXTA- LAUN	YFIRV. LAUN	ÖNNUR LAUN	HEILDAR- LAUN	KAUPM. TAXTAL.
STARFSMANNAFÉLAG RÍKISSTUVARPSINS								
2	1988		97.67	53322	17665	2741	73728	109.82
3	1988		99.16	53412	17228	2404	73044	109.00
4	1988		98.11	53598	18757	2442	74797	107.83
5	1988		102.50	53104	15983	2365	71452	104.99
6	1988		110.46	57519	17019	2267	76805	109.93
7	1988		116.42	57126	14704	2263	74093	105.52
8	1988		109.25	57028	16467	1781	76316	105.08
9	1988		100.70	55296	15013	2504	75813	104.73
10	1988		97.10	54440	16103	2706	77244	104.63
11	1988		93.76	55801	24546	4944	88091	104.85
12	1988		93.58	55223	73351	6779	67466	105.28
1	1989		97.76	55958	19235	2221	80939	104.56
2	1989		93.85	56931	19130	2222	81750	103.31
3	1989		93.44	56093	18072	2258	80750	101.22
4	1989		93.33	56388	22140	2655	81713	102.84
5	1989		94.34	56333	20342	2730	85000	100.12
6	1989		107.25	44866	18004	2274	81764	96.56
7	1989		110.50	22228	16779	2301	80308	95.49
8	1989		105.61	22229	15222	2304	78755	94.22
9	1989		100.34	22229	18314	2309	84538	95.76
10	1989		94.77	6182	21419	2765	89366	96.41
11	1989		95.83	6693	20509	2686	88888	95.72
12	1989		102.07	65287	38747	4197	108231	93.11
STARFSMANNAFÉLAG SJÓNVARPSINS								
1	1987		114.08	37738	36996	3147	77881	100.00
2	1987		111.70	45168	35638	3992	84798	117.95
3	1987		117.13	45418	34008	3191	82617	116.88
4	1987		117.93	45482	32419	3929	81830	115.44
5	1987		109.29	45450	44060	3475	92985	113.96
6	1987		112.84	45445	32398	3526	81369	111.71
7	1987		115.66	45313	27902	2756	75971	109.47
8	1987		110.84	46822	23293	2192	72307	110.37
9	1987		100.07	47890	25472	2548	75910	111.62
10	1987		97.78	51192	28016	3142	82350	117.38
11	1987		100.18	51203	56533	5660	113396	113.77
12	1987		94.65	51201	18768	1130	71099	111.56
1	1988		95.35	52657	32514	3249	88420	110.62
2	1988		97.52	53082	31691	3306	88079	110.59
3	1988		94.63	53722	36289	3253	93264	110.90
4	1988		95.68	53420	32281	2773	88474	108.71
5	1988		97.30	53732	30754	3066	87552	107.46
6	1988		101.84	58433	31266	3138	92837	112.97
7	1988		99.88	58747	35318	2573	96638	109.77
8	1988		98.45	58331	22510	1920	82761	106.78
9	1988		90.47	58597	36057	2871	97525	106.49
10	1988		89.28	59468	36537	3292	99297	107.71
11	1988		94.47	59238	63555	5904	128697	107.22
12	1988		85.63	59703	19835	1612	81150	107.86
1	1989		88.31	55560	36880	3060	99600	105.84
2	1989		88.68	58860	29462	4120	93442	104.79
3	1989		90.72	60080	30721	3759	94562	102.37
4	1989		99.44	62264	43123	3504	108881	110.84
5	1989		99.93	61560	35117	3502	100183	110.68
6	1989		99.95	61460	33864	3643	104967	97.63
7	1989		100.00	61332	29146	3041	93519	96.76
8	1989		99.52	61119	21711	2288	85114	95.14
9	1989		87.06	63749	29402	3566	96714	96.36
10	1989		88.45	64809	30687	3800	99302	97.27
11	1989		87.91	65993	35673	4211	105879	97.27
12	1989		87.97	65892	42871	4578	113341	95.06
STARFSMANNAFÉLAG RÍKISSTOFNANA T								
1	1987		1334.23	35419	16064	2275	53758	100.00
2	1987		1316.62	40394	19243	2522	62159	112.39
3	1987		1306.80	40475	19506	2487	62468	110.98
4	1987		1308.15	40524	19926	2775	63225	109.59
5	1987		1372.58	40131	22915	2587	65633	107.21
6	1987		1527.79	40720	19192	2360	62272	106.65
7	1987		1562.92	40559	18052	1797	60408	104.40
8	1987		1497.16	40829	18578	2040	61447	102.55
9	1987		1369.59	41651	16890	1519	60060	103.44
10	1987		1300.72	46140	25328	2986	74454	112.73
11	1987		1299.13	46211	24107	3164	73482	109.40
12	1987		1319.17	46113	21590	2946	70649	107.05

BSRB RIKISST. LAUNAUPPHÆDIR OG KAUPMATTUR TAXTALAUNA MED JANUAR 1987 = 100

FÉLAG MÁN ÁR	STÖDU- GILDI	TAXTA- LAUN	YFIRV. LAUN	ÖNNUR LAUN	HEILDAR- LAUN	KAUPM. TAXTAL.
STARFSMANNAFÉLAG RÍKISSTOFNANA T						
1 1988	1268.68	47803	22740	3019	73562	107.00
2 1988	1289.32	48691	23910	3077	75678	108.08
3 1988	1297.29	48997	23895	3068	75960	107.77
4 1988	1276.78	49039	20415	2233	71687	106.33
5 1988	1368.04	48587	25889	3069	77545	103.53
6 1988	1542.48	51768	25254	3043	80065	106.64
7 1988	1535.00	51671	24393	2839	78903	102.87
8 1988	1490.61	52009	24465	3037	79511	101.44
9 1988	1328.10	53212	24626	2518	80356	103.03
10 1988	1308.50	53554	28461	3564	85579	103.35
11 1988	1307.14	53620	28686	3651	85957	103.41
12 1988	1339.59	53490	26659	3912	84061	102.96
1 1989	1291.74	53798	25712	3803	83313	101.86
2 1989	1279.50	54199	26700	3458	84357	101.09
3 1989	1304.60	54469	27172	3763	85404	98.88
4 1989	1303.61	57084	28071	3623	88778	101.43
5 1989	1374.97	56553	28326	3475	88354	98.54
6 1989	1503.56	55348	26795	2905	85048	93.68
7 1989	1528.25	55149	24953	2894	82996	92.70
8 1989	1481.81	55586	25076	2806	83468	92.20
9 1989	1323.57	58867	29889	3426	92182	95.69
10 1989	1272.63	59880	30831	3725	94436	95.46
11 1989	1265.57	60989	31993	3801	96783	95.78
12 1989	1271.83	61057	29908	4245	95210	93.86
STARFSMANNAFÉLAG RÍKISSTOFNANA S						
1 1987	1364.86	35588	9687	181	45456	100.00
2 1987	1376.92	40687	12995	194	53876	112.67
3 1987	1395.67	40719	11993	194	52906	111.12
4 1987	1418.20	40722	12802	245	53769	109.60
5 1987	1443.10	40571	13371	305	54247	107.88
6 1987	1586.80	41092	11451	206	52749	107.11
7 1987	1572.98	41045	11874	208	53127	105.15
8 1987	1542.31	41223	10288	210	51721	103.04
9 1987	1399.76	42168	10575	178	52921	104.22
10 1987	1395.30	45768	14139	254	60159	111.28
11 1987	1406.51	45844	15479	273	61601	108.03
12 1987	1434.17	45909	14590	137	59885	106.06
1 1988	1397.63	47497	14590	325	62412	105.81
2 1988	1418.02	48729	17226	299	66254	107.65
3 1988	1430.83	49387	17384	306	67077	108.11
4 1988	1411.84	49582	13893	193	63668	107.00
5 1988	1512.64	49269	17124	325	66718	104.49
6 1988	1660.43	52790	16300	346	69436	108.23
7 1988	1652.98	52903	15704	290	68897	104.82
8 1988	1621.08	53179	14363	291	67833	103.23
9 1988	1483.72	54127	15207	186	69520	104.31
10 1988	1453.29	54306	17235	335	71876	104.30
11 1988	1469.91	54461	17900	338	72699	104.53
12 1988	1485.64	54350	16628	341	71319	104.12
1 1989	1460.30	54698	16260	380	71338	103.07
2 1989	1450.04	55124	17585	338	73047	102.33
3 1989	1442.99	55556	17886	365	73807	100.38
4 1989	1445.53	57963	18444	388	76795	102.50
5 1989	1490.49	57670	17800	408	75878	100.01
6 1989	1617.00	56966	18293	362	75621	95.96
7 1989	1596.26	56657	14924	317	71898	94.78
8 1989	1552.96	56994	14393	347	71734	94.08
9 1989	1404.16	60208	16629	359	77196	97.41
10 1989	1355.28	61178	18582	387	80147	97.06
11 1989	1368.75	62347	20301	399	83047	97.45
12 1989	1386.93	62369	18995	431	81795	95.42
STARFSMANNAFÉLAG RÍKISSTOFNANA H						
1 1987	812.39	33627	11262	5405	50294	100.00
2 1987	831.45	40841	12467	6238	59546	119.69
3 1987	850.08	40805	12610	6572	59987	117.84
4 1987	841.56	40857	15465	6298	62620	116.38
5 1987	875.95	40804	15639	6521	62964	114.82
6 1987	958.75	41630	13516	5778	60924	114.82
7 1987	966.54	41641	12150	5058	58849	112.90
8 1987	921.40	41935	12618	5428	59981	112.94
9 1987	833.76	42504	8587	369	54860	111.18
10 1987	889.01	45817	17189	7070	70076	117.90
11 1987	907.76	45677	15814	7051	68542	113.90

BSRB RÍKISST. LAUNAUPPHÉDIR OG KAUPMÁTTUR TAXTALAUNA MEÐ JANUAR 1987 = 100

FÉLAG MAN AR	STÖÐU- GILDI	TAXTA- LAUN	YFIRV. LAUN	ÖNNUR LAUN	HEILDAR- LAUN	KAUPM. TAXTAL.
STARFSMANNAFÉLAG RÍKISSTOFNANA H						
12 1987	898.61	45838	6963	3044	55845	112.08
1 1988	894.75	46147	17647	7545	71339	108.80
2 1988	918.62	47404	14985	7149	69538	110.83
3 1988	922.04	47293	17367	7272	71932	109.56
4 1988	900.12	47333	15659	4910	67902	108.10
5 1988	938.61	47415	18848	6907	73170	106.42
6 1988	1028.19	51431	15567	6818	73816	111.59
7 1988	11045.55	51587	15091	6524	73202	108.18
8 1988	1016.54	51936	13864	6576	72376	106.70
9 1988	958.78	51543	10138	5517	67198	105.12
10 1988	961.09	51729	15617	8339	75685	105.14
11 1988	946.72	51657	14946	7935	74538	104.93
12 1988	958.08	51800	16094	8141	76035	103.30
1 1989	951.27	52202	14087	7852	73968	102.22
2 1989	950.75	52252	17695	8825	78510	100.51
3 1989	930.18	52392	17017	8865	80767	103.09
4 1989	934.18	52084	18764	8573	81261	98.57
5 1989	940.83	53361	12497	7347	73260	95.59
6 1989	940.16	53666	10960	6784	71590	95.54
7 1989	1000.72	54036	11742	6800	78638	95.51
8 1989	965.49	54036	14287	7313	78517	97.46
9 1989	686.39	54691	13371	8933	79244	95.90
10 1989	890.05	56877	14950	9664	81927	95.96
11 1989	894.58	58013	14950	9664	81927	95.96
12 1989	888.49	58017	16637	9036	83690	93.93
STARFSMANNAFÉLAG RÍKISSTOFNANA ALLS						
1 1987	3511.48	35070	12474	2185	49729	100.00
2 1987	3524.99	40614	15204	2489	58307	114.13
3 1987	3552.55	40650	14904	2564	58118	112.57
4 1987	3567.91	40681	16042	2600	59323	111.11
5 1987	3691.63	40463	17458	2628	60549	109.18
6 1987	4073.34	41079	14840	2325	58244	108.66
7 1987	4102.44	41000	14293	1956	57249	106.59
8 1987	3960.87	41240	13964	2116	57320	104.61
9 1987	3603.11	42049	12515	1519	56083	105.46
10 1987	3585.03	45914	18955	2935	67804	113.29
11 1987	3613.40	45936	18665	3015	67616	109.83
12 1987	3631.95	45964	14955	1877	62796	107.77
1 1988	3561.06	47267	18262	3099	68628	106.85
2 1988	3625.96	48380	19035	3022	70437	108.46
3 1988	3650.16	48719	19694	3047	71460	108.22
4 1988	3588.74	48825	16656	2137	67618	106.92
5 1988	3819.29	48569	20687	2925	72181	104.52
6 1988	4231.10	52087	19386	2902	74375	108.36
7 1988	4233.53	52131	18703	2754	73588	104.82
8 1988	4128.23	52450	17888	2830	73168	103.32
9 1988	3770.60	53148	17236	2363	72747	103.93
10 1988	3722.88	53376	20763	3536	77675	104.03
11 1988	3743.77	53443	20903	3456	77802	104.09
12 1988	3774.43	53371	20258	3655	77284	103.76
1 1989	3710.12	53636	19508	3576	76720	102.56
2 1989	3680.81	54003	19849	3364	77216	101.73
3 1989	3698.34	54403	21113	3591	79107	99.75
4 1989	3683.32	56922	21489	3632	82043	102.15
5 1989	3746.29	56379	21890	3453	81172	99.22
6 1989	4060.72	55591	20099	2921	78611	95.03
7 1989	4125.23	55416	17710	2840	75934	94.08
8 1989	4000.26	55773	17710	2845	76298	93.43
9 1989	3444.12	55902	21299	2746	76298	96.91
10 1989	3517.96	59620	21695	2737	85088	95.99
11 1989	3528.90	60761	23138	3790	87689	96.37
12 1989	3547.25	60809	22317	3954	87080	94.40
TOLLVARDAFÉLAG ISLANDS						
1 1987	115.42	42228	35466	3964	81658	100.00
2 1987	114.12	48187	28323	4824	81334	112.46
3 1987	113.50	48314	28345	4526	81185	111.11
4 1987	116.65	48721	30212	4309	83242	110.51
5 1987	124.77	48012	48565	3014	99591	107.59
6 1987	138.18	47677	35341	4080	87098	104.74
7 1987	134.06	47688	32645	4434	84767	102.96
8 1987	131.79	48077	31571	4648	84296	101.28
9 1987	121.30	48742	30871	5209	84822	101.53
10 1987	111.02	54284	36593	5195	96072	111.24

BSRB RÍKISST. LAUNAUPPHÆÐIR OG KAUPMÁTTUR TAXTALAÑA MED JANUAR 1987 = 100

FÉLAG MÁN ÁR	STÖÐU- GILDI	TAXTA- LAUN	YFIRV. LAUN	ÖNNUR LAUN	HEILDAR- LAUN	KAUPM. TAXTAL.
TOLLVARDAFÉLAG ÍSLANDS						
11 1987	109.02	54181	40339	5365	99885	107.58
12 1987	109.33	54175	27632	3360	85167	105.49
1 1988	113.94	54040	50948	5118	110106	101.46
2 1988	117.31	57322	36468	5786	99576	106.72
3 1988	114.00	57448	32526	5089	95063	105.98
4 1988	112.90	57276	44507	5125	106908	104.17
5 1988	120.70	57719	32169	5135	95023	103.16
6 1988	135.49	59210	35836	5782	100828	102.30
7 1988	135.47	59457	35124	6245	100826	99.29
8 1988	134.89	60023	34040	5938	100001	98.19
9 1988	121.44	61378	33882	6148	101408	99.68
10 1988	118.18	61198	37632	5834	105451	100.33
11 1988	117.38	62009	40503	6632	109144	100.30
12 1988	117.89	62173	34439	5433	102065	100.38
1 1989	116.03	62852	47420	5305	115577	99.81
2 1989	117.11	63081	35619	5995	104695	98.69
3 1989	117.50	63762	35151	6359	105272	97.09
4 1989	120.19	66027	47223	5621	118871	98.40
5 1989	124.40	65242	38498	5809	109549	95.35
6 1989	140.34	63289	35264	6001	104554	89.85
7 1989	137.12	64093	35975	5907	105975	90.36
8 1989	134.14	64379	34822	6186	105387	89.56
9 1989	122.26	66930	37056	7046	111032	91.26
10 1989	116.62	67748	36487	8154	112389	90.58
11 1989	114.35	70576	41305	9349	121230	92.97
12 1989	115.15	70735	31454	6484	108673	91.20
BSRB FÉLOGIN HJÁ RÍKINU, ALLS						
1 1987	6853.56	36974	18624	3417	59015	100.00
2 1987	6854.50	41971	18582	3576	64129	111.87
3 1987	6920.95	42274	18635	3588	64497	111.03
4 1987	6956.98	42623	21584	3736	67943	110.43
5 1987	7228.27	42343	22395	3623	68361	108.37
6 1987	7940.92	42716	19897	3243	65836	107.17
7 1987	7998.49	42625	17850	2875	63350	105.11
8 1987	7755.84	43163	18437	3083	64683	103.85
9 1987	7046.58	44135	17493	2659	64287	105.00
10 1987	7036.31	47822	23056	4072	74950	111.92
11 1987	7124.58	47753	23831	4287	75871	108.30
12 1987	7178.24	47685	18997	2877	69559	106.05
1 1988	7065.76	49201	24243	4614	78058	105.50
2 1988	7109.15	50456	22794	4422	77672	107.29
3 1988	7140.46	50734	23001	4275	78010	106.89
4 1988	7021.64	50796	22315	3590	76701	105.51
5 1988	7438.19	50503	23944	4041	78488	103.09
6 1988	8142.50	54089	23696	4246	82031	106.73
7 1988	8169.65	54140	22163	4038	80341	103.25
8 1988	7951.10	54431	22125	3990	80546	101.70
9 1988	7277.65	55382	21401	3737	80520	102.72
10 1988	7222.79	55577	23930	4893	84400	102.74
11 1988	7268.09	55689	25088	5157	85934	102.88
12 1988	7439.95	55479	23454	4826	83759	102.30
1 1989	7188.79	56016	26289	5417	87722	101.59
2 1989	7148.30	56352	23738	4961	85051	100.69
3 1989	7196.57	56809	24138	4938	85885	98.79
4 1989	7216.42	59179	26796	5292	91267	100.73
5 1989	7451.54	59046	26016	4951	90013	98.56
6 1989	8114.46	58142	24060	4335	86537	94.27
7 1989	8203.54	58024	21633	4205	83862	93.43
8 1989	8019.24	58445	21807	4203	84455	92.86
9 1989	7108.04	61487	24971	4681	91139	95.75
10 1989	7156.32	62202	24598	5390	92190	94.99
11 1989	7156.59	63321	26437	5630	95388	95.26
12 1989	7311.98	63179	25679	5337	94195	93.03

BHMAR HOPAR LAUNAUPPHÆDIR OG KAUPMÁTTUR TAXTALAUNA MED JANÚAR 1987 = 100

FÉLAG	MÁN	ÁR	STÖÐU- GILDI	TAXTA- LAUN	YFIRV. LAUN	ÖNNUR LAUN	HEILDAR- LAUN	KAUPM. TAXTAL.
BHMAR HÖPUR 1 (HÍK/G)								
1	1987	281.51	430688	17096	66	60230	100.00	
2	1987	282.05	488555	20194	74	69123	111.79	
3	1987	281.06	488999	20584	74	69557	110.26	
4	1987	280.07	489433	20976	75	69994	108.85	
5	1987	280.49	48973	18942	22	67937	107.60	
6	1987	281.43	502666	1826	24	52116	108.27	
7	1987	277.15	504955	1005	42	51542	106.89	
8	1987	289.78	504117	1453	26	51896	104.14	
9	1987	284.94	52343	12259	0	64602	106.90	
10	1987	310.17	56054	22258	31	78631	112.62	
11	1987	306.29	561555	22934	310	79399	109.33	
12	1987	304.99	57892	23810	225	81927	110.53	
1	1988	307.04	57926	22608	387	80921	106.63	
2	1988	300.67	59611	24049	520	84180	108.82	
3	1988	297.49	59589	24393	389	84371	107.79	
4	1988	300.86	59576	23051	369	82996	106.24	
5	1988	299.14	59651	22314	178	82143	104.53	
6	1988	295.26	64681	2608	0	67289	109.57	
7	1988	291.30	65030	1607	0	66637	106.47	
8	1988	286.71	64928	3062	0	67990	104.15	
9	1988	290.22	64766	19123	88	83977	103.13	
10	1988	297.32	64791	28060	302	93153	102.83	
11	1988	297.88	64858	29118	454	94430	102.86	
12	1988	299.23	64926	30434	263	95623	102.78	
1	1989	297.48	65024	29853	484	95361	101.25	
2	1989	293.93	65570	26953	544	93067	100.58	
3	1989	277.84	66323	29424	423	96170	99.02	
4	1989	274.28	68227	17248	214	85689	99.70	
5	1989	274.28	68227	17248	214	85689	97.77	
6	1989	270.71	70181	4752	0	74933	97.69	
7	1989	264.25	72105	2215	0	74320	99.68	
8	1989	258.74	72789	3238	0	76027	99.29	
9	1989	249.31	73883	26526	385	100794	98.77	
10	1989	249.99	73909	32308	523	106740	96.89	
11	1989	249.66	75053	33475	566	109094	96.93	
12	1989	250.27	75129	32291	372	107792	94.98	
BHMAR HÖPUR 2 (HÍK/F)								
1	1987	772.79	47579	25559	102	73240	100.00	
2	1987	763.93	53180	27025	132	80337	110.15	
3	1987	764.81	53198	37365	133	90636	108.58	
4	1987	765.69	53216	47682	134	101032	107.13	
5	1987	763.82	53239	54662	134	108035	105.88	
6	1987	765.25	54812	3680	1	58493	106.82	
7	1987	747.92	55122	2191	0	57313	105.62	
8	1987	763.44	54908	2904	0	57812	102.66	
9	1987	743.66	56805	21352	114	78271	105.02	
10	1987	776.46	61212	28896	138	90246	111.33	
11	1987	776.98	61241	29580	139	90960	107.93	
12	1987	778.36	63069	57288	143	120500	109.00	
1	1988	789.01	62935	29509	163	92607	104.87	
2	1988	784.14	64263	29170	177	93610	106.19	
3	1988	787.78	64374	30129	174	94677	105.40	
4	1988	788.93	64282	28446	169	92897	103.76	
5	1988	790.55	64356	57646	170	122172	102.08	
6	1988	791.47	69906	5522	1	75429	107.20	
7	1988	769.17	70256	2550	1	72807	104.12	
8	1988	810.08	69455	3412	49	72916	100.85	
9	1988	815.97	69327	31404	117	100848	99.93	
10	1988	832.44	69602	35652	121	105375	99.99	
11	1988	830.80	69826	37636	144	107606	100.24	
12	1988	833.18	69759	70575	123	140457	99.96	
1	1989	854.75	69738	37104	183	107025	98.29	
2	1989	848.74	70297	36122	171	106590	97.61	
3	1989	840.92	71137	37172	159	108468	96.14	
4	1989	843.12	73199	27496	75	100770	96.82	
5	1989	843.12	73199	27496	75	100770	94.95	
6	1989	845.32	75250	17870	-8	93112	94.82	
7	1989	820.70	77074	2570	46	79690	96.45	
8	1989	869.97	76199	20328	38	96565	94.08	
9	1989	874.83	77665	51956	116	129737	93.99	
10	1989	870.48	77680	40252	134	118066	92.18	
11	1989	872.42	78958	42488	127	121573	92.31	
12	1989	872.62	79139	45933	121	125193	90.56	

BHMR HOPAR LAUNAUPPHÆDIR OG KAUPMATTUR TAXTALAUNA MEE JANÚAR 1987 = 100

FÉLAG	MÁN	ÁR	STÖDU- GILDI	TAXTA- LAUN	YFIRV. LAUN	ÖNNUR LAUN	HEILDAR- LAUN	KAUPM. TAXTAL.
BHMR HÖPUR 3 (FH, KKH, FTK)								
1	1987		379.31	59587	6756	86	66429	100.00
2	1987		375.34	68020	7465	0	75485	112.50
3	1987		383.41	67892	8112	0	76004	110.65
4	1987		384.63	67869	7377	0	75246	109.09
5	1987		380.56	67855	9619	0	77474	107.76
6	1987		387.40	69707	4253	0	73960	108.52
7	1987		399.21	69646	2938	0	72584	106.56
8	1987		403.09	70895	4219	6	75120	105.84
9	1987		387.66	71446	3841	0	75287	105.47
10	1987		398.72	77201	10501	0	87702	112.11
11	1987		415.09	77568	11398	0	88966	109.15
12	1987		394.70	77204	8699	0	85903	106.54
1	1988		343.46	80502	1158	1	81661	107.11
2	1988		391.51	81455	9516	24	90995	107.47
3	1988		392.11	81530	10182	33	91745	106.59
4	1988		389.47	81669	5986	1	87656	105.26
5	1988		390.22	82320	12862	4	95186	104.27
6	1988		404.04	88277	9166	1	97444	108.09
7	1988		399.28	88787	4621	0	93408	105.07
8	1988		398.66	88822	5047	0	93869	102.98
9	1988		398.88	88510	8669	0	97179	101.87
10	1988		397.52	88912	13238	0	102150	101.99
11	1988		405.18	89070	14373	0	103443	102.10
12	1988		405.91	89116	15446	0	104562	101.97
1	1989		411.94	89090	14089	0	103179	100.36
2	1989		411.45	89283	12826	0	101809	98.69
3	1989		411.71	89951	12346	0	102997	97.07
4	1989		412.50	89951	12911	0	104930	97.17
5	1989		411.46	92221	16388	0	108699	95.52
6	1989		418.09	92864	10032	0	102896	93.42
7	1989		412.96	93373	4998	0	98371	93.59
8	1989		423.03	92832	5385	0	98824	92.53
9	1989		423.57	92531	13316	0	108632	92.10
10	1989		421.49	95557	13068	0	108635	90.55
11	1989		422.73	96990	16093	0	113083	90.54
12	1989		424.86	97916	16760	0	114676	89.47
BHMR HÖPUR 4 (FHH, FISH, Ii, SIF)								
1	1987		123.53	50447	13837	5073	69357	100.00
2	1987		128.35	52150	15284	4460	71894	101.88
3	1987		123.51	52388	17092	4964	74444	100.85
4	1987		123.51	52388	17092	4964	74444	99.47
5	1987		118.65	52645	19049	5509	77203	98.75
6	1987		138.52	53361	16642	5469	75472	98.12
7	1987		136.46	53773	16600	4541	74914	97.18
8	1987		135.06	53795	18554	5444	77793	94.86
9	1987		136.94	53844	10038	2737	66619	93.88
10	1987		149.56	58277	20481	6400	85158	99.96
11	1987		153.79	58244	19735	5880	83859	96.81
12	1987		149.98	58144	5951	1046	65141	94.77
1	1988		156.77	60250	17197	6398	83845	94.69
2	1988		160.04	61465	18013	5126	84604	95.79
3	1988		158.63	61519	20326	5704	87549	95.00
4	1988		160.70	61671	12861	3220	77752	93.89
5	1988		171.70	61714	21214	5461	88389	92.33
6	1988		189.05	65883	19768	6018	91669	95.28
7	1988		193.15	66045	19528	5904	91477	92.32
8	1988		187.82	66596	18779	5080	90455	91.20
9	1988		184.32	65877	8806	2588	77271	89.56
10	1988		198.98	66213	19256	6267	91736	89.71
11	1988		200.16	66211	18368	10378	94957	89.65
12	1988		194.75	65901	18766	7112	91179	89.07
1	1989		203.23	66285	17663	7027	90975	89.11
2	1989		204.94	66397	18104	6068	90569	89.95
3	1989		205.29	67007	22830	7117	96954	89.41
4	1989		207.92	68318	20918	6936	96172	89.23
5	1989		207.92	68318	20918	6936	96172	89.23
6	1989		210.53	69596	19055	6760	95411	89.11
7	1989		210.96	69730	19730	6133	97128	89.11
8	1989		206.71	71480	20835	6327	98842	89.24
9	1989		215.28	72288	21012	6311	98869	89.50
10	1989		215.36	72555	20148	7213	99315	82.21
11	1989		215.02	73369	21589	7246	102204	80.90
12	1989		206.10	73751	21527	7921	103199	79.60

BHRM HOPAR LAUNAUPPHÆDIR OG KAUPMATTUR TAXTALAUNA MED JANUAR 1987 = 100

FÉLAG	MAN	AR	STÖÐU- GILDI	TAXTA- LAUN	YFIRV. LAUN	ÖNNUR LAUN	HEILDAR- LAUN	KAUPM. TAXTAL.
BHRM HOPUR 5 (LÆI, DÍ, SÍ, PÍ)								
1	1987	1	341.10	52607	7062	8371	68040	100.00
1	1987	2	395.56	53244	6776	8278	68399	99.93
1	1987	3	344.44	57253	8755	8418	74428	105.69
1	1987	4	345.78	57239	8705	9456	75400	104.22
1	1987	5	345.22	57358	8732	8801	74791	102.69
1	1987	6	337.33	52222	8873	9414	76709	103.02
1	1987	7	466.44	58418	8880	7334	72340	101.24
1	1987	8	422.00	55330	6880	6612	72299	98.97
1	1987	9	366.66	55404	7372	1245	68550	99.41
1	1987	10	366.66	55404	7372	1245	68550	105.69
1	1987	11	366.66	55404	7372	1245	68550	102.68
1	1987	12	366.66	55404	7372	1245	68550	100.00
1	1988	1	481.11	68483	10034	9388	88483	101.25
1	1988	2	481.11	68483	8341	7988	84881	102.35
1	1988	3	366.66	62281	11005	8344	89633	104.08
1	1988	4	366.66	62281	9933	1437	81133	101.78
1	1988	5	381.11	75550	11958	1026	97766	106.78
1	1988	6	477.77	74333	8946	8272	15558	99.64
1	1988	7	411.91	74425	9924	9269	93611	97.73
1	1988	8	382.22	56024	9805	3140	87996	97.80
1	1988	9	377.66	76387	11729	11337	99455	99.25
1	1988	10	375.50	76420	13117	10498	100069	99.23
1	1988	11	370.37	77163	12282	11342	100787	100.00
1	1988	12	375.02	77022	12083	10964	100069	98.18
2	1989	1	917.64	79090	17607	4921	101618	99.32
2	1989	2	379.90	77728	12520	11708	101956	95.00
3	1989	1	383.55	78118	12869	11597	102584	93.45
3	1989	2	384.72	80019	13406	12052	105477	93.88
4	1989	1	403.13	79092	13165	11103	103360	90.13
4	1989	2	493.11	78639	9294	7260	95193	89.00
4	1989	3	426.77	78940	10328	10649	99917	88.15
4	1989	4	395.33	82034	12030	11060	105124	89.78
4	1989	5	384.13	82662	12608	13214	108484	88.72
4	1989	6	377.10	83956	12020	15581	111557	88.77
4	1989	7	377.80	84044	12172	16216	112432	86.98
BHRM HOPUR 6 (KFBH, FB, SLIR, FBSS)								
1	1987	1	288.71	55235	22651	2812	80698	100.00
1	1987	2	297.00	55268	30797	2075	88140	98.61
1	1987	3	300.28	60848	31111	2107	94066	106.98
1	1987	4	304.65	60938	32254	2140	95332	105.67
1	1987	5	303.48	60786	34182	3173	98141	104.14
1	1987	6	322.94	63268	31138	2688	97094	106.26
1	1987	7	330.10	63339	29300	2318	94957	104.55
1	1987	8	318.46	63879	26886	2612	93377	102.88
1	1987	9	303.56	64308	30193	2381	96882	102.41
1	1987	10	316.87	68950	38087	2546	109583	108.02
1	1987	11	322.28	68771	40413	2606	111790	104.40
1	1987	12	328.19	69077	37125	2233	108435	102.83
1	1988	1	322.68	71251	35456	2561	109984	102.27
1	1988	2	322.74	72607	41552	2561	116720	103.35
1	1988	3	317.82	73667	42478	2590	118735	103.90
1	1988	4	325.39	73856	35819	3180	112855	102.69
1	1988	5	331.85	74127	42202	3144	119973	101.29
1	1988	6	345.41	76775	42205	2855	124733	105.24
1	1988	7	350.01	79730	42015	2888	124603	101.79
1	1988	8	350.15	82259	39880	2759	124897	100.38
1	1988	9	343.22	79802	42340	2847	124629	99.08
1	1988	10	353.41	79545	46879	2556	129178	98.68
1	1988	11	365.33	79543	48379	2459	130374	98.37
1	1988	12	372.81	79403	43388	2316	125108	98.01
2	1989	1	365.41	79783	42888	3198	125869	96.86
2	1989	2	366.78	80217	44548	2569	127334	95.94
2	1989	3	368.93	80798	45467	2446	128711	94.06
2	1989	4	371.99	81165	46585	2578	130328	92.48
2	1989	5	366.68	82890	49336	2641	134867	92.62
2	1989	6	369.90	83310	50170	2783	136263	90.42
2	1989	7	384.95	85057	44382	2493	131932	91.68
2	1989	8	385.96	85355	37440	2765	125560	90.78
2	1989	9	384.14	86927	45258	2640	134825	90.61
2	1989	10	386.87	86943	49399	2416	138758	88.87
2	1989	11	393.48	88197	51578	2500	142275	88.82
2	1989	12	395.37	88368	47759	2265	138392	87.10

BHRM HOPAR LAUNAUPPHEDIR OG KAUPMATTUR TAXTALAUNA MED JANUAR 1987 = 100

FELAG	MAN	AR	STÖDU- GILDI	TAXTA- LAUN	YFIRV. LAUN	ÖNNUR LAUN	HEILDAR- LAUN	KAUPM. TAXTAL.
BHRM HOPUR 7 (KA, FIN, MNI, FF)								
1	1987	1	342.71	51235	19769	1077	72081	100.00
2	1987	2	342.86	59023	26558	1666	87247	113.53
3	1987	3	346.38	59073	27992	1815	88880	111.97
4	1987	4	348.07	58978	28043	1879	88900	110.26
5	1987	5	353.35	59055	32222	1919	93196	128.07
6	1987	6	370.26	60092	28532	2039	90663	108.80
7	1987	7	385.47	60694	28896	1808	91398	108.00
8	1987	8	378.62	61164	27625	1982	90771	106.20
9	1987	9	355.96	61963	28194	1483	91640	106.38
10	1987	10	365.86	67363	33357	2318	103038	113.77
11	1987	11	365.20	67353	30995	2524	100872	110.23
12	1987	12	375.98	67499	23777	1473	92749	108.33
1	1988	1	356.90	69461	26507	2406	98374	107.48
2	1988	2	359.92	71029	28868	2569	102466	108.99
3	1988	3	363.32	72115	35536	2812	110463	109.65
4	1988	4	360.29	72213	26686	2011	100910	108.25
5	1988	5	380.88	71921	31862	2252	106035	105.94
6	1988	6	409.13	76392	38918	2274	117584	108.78
7	1988	7	419.48	76106	37920	2403	116429	104.75
8	1988	8	419.89	75946	38480	2482	116908	102.40
9	1988	9	403.44	76646	34505	1950	113101	102.59
10	1988	10	404.49	76642	39579	2737	118958	102.24
11	1988	11	420.79	76952	39163	2943	119058	102.59
12	1988	12	414.94	76902	32680	1972	111554	102.33
1	1989	1	409.33	77257	33090	2370	112717	101.12
2	1989	2	409.87	77870	34472	2478	114820	100.41
3	1989	3	413.41	78353	36980	2757	118112	98.36
4	1989	4	421.66	79575	39380	2381	121336	97.75
5	1989	5	422.25	79901	39168	2438	121507	96.25
6	1989	6	437.54	80844	38671	2200	121715	94.60
7	1989	7	443.27	82171	39628	2178	123977	95.49
8	1989	8	445.56	82387	40969	2244	125600	94.47
9	1989	9	425.71	84692	43258	2372	130322	95.18
10	1989	10	422.67	84889	44070	2259	131218	93.55
11	1989	11	420.89	86409	41214	2336	129959	93.81
12	1989	12	425.57	86809	45033	2671	134513	92.25
BHRM HOPUR 8 (FB, FIF, ÚTG)								
1	1987	1	146.55	50294	12145	556	62995	100.00
2	1987	2	160.28	52547	14231	389	67164	102.96
3	1987	3	161.86	55797	17896	583	74276	107.74
4	1987	4	165.11	55574	15058	539	71200	106.22
5	1987	5	166.33	55525	18022	539	74085	104.47
6	1987	6	168.28	57638	15305	504	73345	106.31
7	1987	7	174.99	57838	13761	502	72101	104.85
8	1987	8	178.48	57886	14422	339	72650	102.39
9	1987	9	164.18	58340	14342	458	73140	102.03
10	1987	10	172.40	62229	17045	511	79846	107.17
11	1987	11	175.27	61835	20930	512	83277	103.09
12	1987	12	173.24	61838	14877	374	77089	101.10
1	1988	1	178.75	63846	15677	490	80011	100.64
2	1988	2	182.65	65095	16425	616	82136	101.76
3	1988	3	183.14	66292	17641	612	84545	102.68
4	1988	4	178.54	66480	17302	599	84381	101.52
5	1988	5	184.56	66610	19869	680	87159	99.96
6	1988	6	191.70	72162	20764	542	93468	104.68
7	1988	7	191.07	72149	18700	498	91347	101.16
8	1988	8	197.22	72229	19025	341	91595	99.21
9	1988	9	203.34	71671	18102	428	90201	97.73
10	1988	10	205.95	71842	22439	582	94863	97.63
11	1988	11	210.70	71861	25461	603	97925	97.60
12	1988	12	208.37	71971	17195	436	89602	97.56
1	1989	1	205.29	72077	19549	740	92366	96.10
2	1989	2	204.61	72619	21372	603	94594	95.39
3	1989	3	210.27	72850	21300	569	94719	93.14
4	1989	4	210.68	73568	22246	367	96181	92.06
5	1989	5	210.45	74972	23794	566	99332	92.00
6	1989	6	223.02	75396	24348	568	100312	89.87
7	1989	7	223.80	76645	20674	500	97819	90.73
8	1989	8	223.24	76667	23833	389	100889	89.55
9	1989	9	224.14	77926	22340	488	100754	89.21
10	1989	10	226.45	78225	24624	450	103299	87.82
11	1989	11	230.51	79786	26137	547	106470	88.24
12	1989	12	225.91	80022	25816	584	106422	86.63

BHRM HOPAR LAUNAUPPHÆDIR OG KAUPMATTUR TAXTALAUNA MED JANÚAR 1987 = 100

FÉLAG	MAN	AR	STÖDU- GILDI	TAXTA- LAUN	YFIRV. LAUN	ÖNNUR LAUN	HEILDAR- LAUN	KAUPM. TAXTAL.
BHRM FÉLÖGIN, ALLS								
	1	1987	2698	51099	17821	1825	70745	100.00
	2	1987	2768	55718	19862	1885	77465	107.46
	3	1987	2756	56420	24707	1961	83088	107.23
	4	1987	2756	56420	24707	1961	83088	105.79
	5	1987	2744	57129	29594	2038	88761	105.79
	6	1987	2836	58894	12248	2106	73048	106.55
	7	1987	2942	6385	10951	1900	7183	105.24
	8	1987	3113	6885	11111	1773	72069	103.03
	9	1987	3770	60222	17079	811	78112	103.66
	10	1987	3881	64866	23756	2320	90942	109.85
	11	1987	3910	64967	24637	2221	91822	106.61
	12	1987	3896	65600	28794	962	95356	105.56
	1	1988	3851	66798	21592	2398	90788	103.64
	2	1988	3009	68382	22705	2269	93356	105.21
	3	1988	2891	68981	25150	2130	96261	105.16
	4	1988	2893	68937	21667	1087	91691	103.61
	5	1988	2945	69637	32809	2338	104584	102.85
	6	1988	3042	74477	17308	2326	94111	106.34
	7	1988	3127	74512	15172	2305	91989	102.82
	8	1988	3095	74352	15487	2225	92064	100.52
	9	1988	3057	74264	23910	1153	99327	99.67
	10	1988	3102	74511	29065	2526	106102	99.67
	11	1988	3141	74688	30340	2481	107509	99.84
	12	1988	3135	74750	37482	2405	114637	99.74
	1	1989	3163	74873	28192	2581	105646	98.26
	2	1989	3269	75279	27072	2393	104744	97.33
	3	1989	3109	75961	29110	2676	107747	95.59
	4	1989	3143	77480	25658	2597	105735	95.43
	5	1989	3143	77480	25658	2597	105735	93.58
	6	1989	3178	78966	22281	2520	103767	92.64
	7	1989	3254	80209	16220	2135	98564	93.45
	8	1989	3245	80157	20896	2477	103530	92.15
	9	1989	3192	81974	33762	2522	118258	92.37
	10	1989	3177	82135	31824	2791	116750	90.76
	11	1989	3181	83450	33022	3073	119545	90.84
	12	1989	3178	83805	34041	3185	121031	89.29

KÍ LAUNAUPPHÆDIR OG KAUPMATTUR TAXTALAUNA MEÐ JANÚAR 1987 = 100

FÉLAG MAN ÁR	STÖÐU- GILDI	TAXTA- LAUN	YFIRV. LAUN	ÖNNUR LAUN	HEILDAR- LAUN	KAUPM. TAXTAL.
KENNASAMBAND ÍSLANDS GRUNNSKÓLAR						
1987	2436.89	43295	13770	52	57117	100.00
1987	2452.50	49036	163248	50	65337	111.62
1987	2447.37	49058	163326	50	65437	110.04
1987	2445.40	49088	15964	53	65104	108.60
1987	2437.60	49119	13694	45	62858	107.36
1987	2431.34	50498	795	5	51298	108.20
1987	2410.09	50666	640	2	51308	106.69
1987	2371.47	51127	814	14	51955	105.05
1987	2344.69	52967	10780	15	63762	107.61
1987	2533.83	56321	18834	133	75288	112.57
1987	2521.32	56326	20075	129	76530	109.09
1987	2524.37	58000	19062	104	77166	110.15
1988	2547.22	57980	19914	147	78041	106.17
1988	2556.56	59466	20717	176	80359	107.99
1988	2554.64	59496	21026	151	80673	107.05
1988	2555.68	59535	19393	127	79055	105.61
1988	2549.62	59551	18305	79	77935	103.81
1988	2542.03	64987	1671	3	66661	109.51
1988	2516.98	65398	1235	14	66647	106.52
1988	2516.75	65796	1397	26	67219	104.99
1988	2558.60	65606	16242	48	81896	103.92
1988	2639.41	65312	23486	117	88915	103.91
1988	2653.48	65359	23875	123	89357	103.12
1988	2639.31	65396	22483	110	87989	102.98
1989	2658.14	65347	24734	122	90203	101.21
1989	2664.70	65727	23422	145	89294	100.29
1989	2683.89	66114	23604	117	89835	98.19
1989	2688.72	66140	23957	158	90255	96.14
1989	2686.12	69762	22125	65	91952	99.45
1989	2673.84	69833	1530	4	71367	96.70
1989	2634.91	71655	1325	13	72993	98.54
1989	2666.22	71911	1533	5	73449	97.58
1989	2666.89	72942	19985	88	93015	97.00
1989	2695.57	72981	24438	139	97558	95.18
1989	2703.07	74057	25700	140	99897	95.15
1989	2701.65	74068	24585	105	98758	93.14
KENNASAMBAND ÍSLANDS FRAMHALDSSKÓLAR						
1987	262.10	45387	19006	118	64511	100.00
1987	2656.00	51036	28837	163	74036	110.82
1987	2654.78	51106	28844	164	74114	109.35
1987	2652.18	51121	24457	160	75864	108.09
1987	2647.38	51410	3843	109	84362	108.18
1987	2644.22	52988	3070	48	86106	108.30
1987	2639.55	53188	1004	0	84192	106.84
1987	2626.69	53285	1046	26	84357	104.44
1987	2619.29	55176	19533	45	74754	106.93
1987	2645.47	59208	24947	181	84336	112.88
1987	2646.43	59253	25149	180	84582	109.47
1987	2638.25	60966	35882	125	96973	110.45
1988	2639.71	61328	24922	136	86386	107.13
1988	2634.92	62762	27714	117	90593	108.72
1988	2631.80	62899	28255	137	91291	107.96
1988	2622.98	62952	25520	105	88577	106.52
1988	2619.49	63107	39936	80	103123	104.94
1988	2615.06	68784	6813	20	75617	110.57
1988	2609.68	69275	780	14	70069	107.63
1988	2619.24	69017	1580	22	70619	105.05
1988	2625.17	68448	28550	111	97109	103.43
1988	2640.04	68138	32152	142	100432	102.61
1988	2639.52	68248	34504	167	102919	102.71
1988	2637.81	68342	3528	158	101028	102.66
1989	2650.27	68479	34692	121	103292	101.18
1989	2652.15	68940	35775	116	104831	100.35
1989	2651.30	69400	35622	112	105134	98.32
1989	2655.84	69384	35251	120	104755	96.21
1989	2651.59	73345	42811	91	116247	99.74
1989	2649.50	73486	10076	6	83568	97.07
1989	2643.30	74773	1744	12	76529	98.08
1989	2661.74	73954	3918	12	77884	95.72
1989	2677.23	75248	32426	155	107829	95.46
1989	2679.61	75168	33837	182	109187	93.51
1989	2680.86	76290	35976	187	112453	93.50
1989	2675.02	76248	36519	214	112981	91.47

KI LAUNAUPPHÆDIR OG KAUPMATTUR TAXTALAUNA MED JANÚAR 1987 = 100

FÉLAG MÁN AR	STÖÐU- GILDI	TAXTA- LAUN	YFIRV. LAUN	ÖNNUR LAUN	HEILDAR- LAUN	KAUPM. TAXTAL.
KENNARASAMBAND ÍSLANDS ALLS						
1987	26988.99	43498	14278	58	57834	100.00
1987	2708.50	49225	16871	65	66161	111.53
1987	2702.15	49228	16941	63	66255	109.96
1987	2702.15	49228	16758	65	66110	108.53
1987	26898.99	49228	15458	51	66483	107.31
1987	26884.99	49228	15458	51	66173	108.18
1987	26775.99	50723	10033	2	51569	106.67
1987	2649.64	50889	6734	15	52164	104.94
1987	2698.11	51315	11533	18	64703	107.49
1987	2663.93	53115	11522	18	77248	112.55
1987	26779.30	55556	20527	134	76087	109.08
1987	26762.62	55556	20513	106	78875	110.12
1987	26767.75	55556	20527	134	78769	106.21
1987	26787.43	55822	21305	171	81219	107.98
1987	26791.48	55977	21627	150	81556	107.06
1987	26776.66	55977	19888	125	79819	105.60
1987	26769.11	55980	20019	79	79931	103.81
1987	26757.09	55833	20722	4	67360	102.50
1987	26757.09	55833	20722	4	67360	102.50
1987	26735.66	65696	1200	14	66991	106.50
1987	26735.99	66005	1411	25	66749	104.91
1987	26735.99	66005	1411	25	66749	104.91
1987	2683.77	65835	17237	53	83125	103.80
1987	26779.45	65548	24208	119	89875	103.00
1987	26893.00	65598	24755	126	90479	103.01
1987	26777.12	65640	23313	114	89067	102.88
1987	26908.41	65617	25591	122	91330	101.16
1987	26916.85	66005	24490	142	90637	100.25
1987	26945.19	66406	24671	117	91194	98.16
1987	26941.56	66422	24940	155	91517	96.10
1987	26937.71	70068	23897	67	94032	99.42
1987	26823.34	70145	2259	4	72408	96.68
1987	26878.21	71918	1360	13	73291	98.44
1987	26921.96	72094	1747	5	73846	97.37
1987	26947.12	73159	21155	94	94408	96.84
1987	26975.18	73186	25321	143	98650	95.00
1987	2683.93	74267	26667	144	101078	94.97
1987	2676.67	74270	25687	115	100072	92.96

REYKJAVÍKURBORG LAUNAUPPHÉDIR OG KAUPMATTUR TAXTALAUNA MED JANÚAR 1987 = 100

FÉLAG	MÁN	ÁR	STÖÐU- GILDI	TAXTA- LAUN	YFIRV. LAUN	ÖNNUR LAUN	HEILDAR- LAUN	KAUPM. TAXTAL.
ST. RV. SKRIFSTOFUHÓPUR								
1	1987		596.23	35450	10596	979	47025	100.00
2	1987		611.29	38420	11426	934	50780	106.81
3	1987		600.48	40205	11848	933	52986	110.14
4	1987		597.49	40364	11196	1067	52627	109.06
5	1987		616.08	40722	11947	895	53564	108.70
6	1987		654.01	41470	10476	854	52300	108.52
7	1987		685.55	41284	10478	782	52544	106.18
8	1987		661.49	41741	10141	799	52681	104.74
9	1987		614.34	42717	10637	883	54237	105.99
10	1987		606.65	45784	15244	1143	62171	111.76
11	1987		612.61	45917	13946	1126	60989	108.61
12	1987		601.52	46277	14032	924	61233	107.34
1	1988		597.72	47808	13958	1186	62952	106.92
2	1988		603.35	48891	15921	1022	65834	108.43
3	1988		617.43	49192	16172	1101	66465	108.10
4	1988		622.61	49101	16386	1236	66723	106.37
5	1988		639.83	49479	16094	1054	66627	105.34
6	1988		697.68	52228	14909	1069	68206	107.49
7	1988		718.83	52467	13839	952	67258	104.36
8	1988		700.25	52926	13264	904	67094	103.14
9	1988		647.34	53869	15963	1147	70979	104.21
10	1988		628.93	53660	18338	1175	73173	103.46
11	1988		641.98	53407	18808	1215	73430	102.91
12	1988		638.59	53649	17934	1135	72718	103.18
1	1989		640.64	52011	14564	2684	69259	98.39
2	1989		648.72	52334	16025	2571	70930	97.53
3	1989		641.15	52806	16126	2839	71771	95.78
4	1989		643.03	55418	15141	9242	79801	98.38
5	1989		665.20	54875	16381	2588	73844	95.54
6	1989		732.20	54283	16137	2539	72959	91.80
7	1989		738.90	55617	12102	2501	70220	93.41
8	1989		724.96	55774	13424	2309	71507	92.43
9	1989		665.85	58220	15525	2781	76526	94.56
10	1989		688.13	58671	17689	2985	79345	94.43
11	1989		689.86	59816	18727	3108	81651	93.86
12	1989		639.95	59854	18269	22773	100896	91.93
ST. RV. TEKNIHÓPUR								
1	1987		763.30	31244	16395	3806	51445	100.00
2	1987		752.32	35164	15715	5120	55999	110.92
3	1987		775.26	35355	15905	4717	55977	109.89
4	1987		785.16	35299	15943	4588	55828	108.19
5	1987		786.25	35666	20313	4582	60571	108.02
6	1987		876.41	36842	14404	3804	55050	109.39
7	1987		902.25	37013	13899	3749	54661	108.07
8	1987		853.35	37256	13619	3959	54834	106.07
9	1987		778.33	37683	17372	4653	59708	106.09
10	1987		781.10	40457	17926	5032	63415	112.05
11	1987		765.39	40492	20387	5574	66453	108.67
12	1987		781.98	42023	19818	5825	67666	110.59
1	1988		771.05	43297	17831	5836	66964	109.87
2	1988		772.04	44422	18472	4901	67795	111.78
3	1988		782.59	44829	20403	5799	71031	111.78
4	1988		787.41	44858	25511	5747	76116	110.26
5	1988		800.93	45045	23525	5333	73903	108.81
6	1988		912.44	48455	20174	5106	73735	113.15
7	1988		909.18	47984	18339	4647	70970	108.30
8	1988		880.95	48896	18587	4492	71975	108.11
9	1988		801.61	49808	19840	5432	74352	107.73
10	1988		795.37	48837	22860	6127	77824	106.84
11	1988		796.96	48780	23630	6401	78811	106.64
12	1988		789.44	48688	22888	6639	78215	106.24
1	1989		773.31	48485	24783	7617	80885	104.06
2	1989		782.91	48831	24874	7682	81387	103.25
3	1989		793.28	49145	30967	9139	89251	101.14
4	1989		808.95	52232	22652	12122	87006	105.21
5	1989		821.37	52186	28547	7213	87946	103.09
6	1989		945.53	51882	20291	6745	78918	99.55
7	1989		962.35	51850	18077	5937	75864	98.80
8	1989		898.54	52015	19120	6333	77468	97.80
9	1989		828.27	54284	20268	7121	81673	100.04
10	1989		819.02	54403	23662	8547	86612	98.31
11	1989		803.48	55467	24518	8166	88151	98.75
12	1989		796.77	55547	23867	28554	107968	96.80

REYKJAVÍKURBORG LAUNAUPPHÆDIR OG KAUPMATTUR TAXTALAUNA MÆD JANÚAR 1987 = 100

FÉLAG	MAN	AR	STÖDU- GILDI	TAXTA- LAUN	YFIRV. LAUN	ÖNNUR LAUN	HEILDAR- LAUN	KAUPM. TAXTAL.
ST.RV.HEILBRIGDISHÖPUR								
1	1987		595	348	944	3424	47703	100.00
1	1987		509	332	47	3877	58784	120.75
1	1987		604	426	1222	4184	59544	119.08
1	1987		601	427	1264	4184	64488	120.56
4	1987		996	438	1673	4443	63246	118.47
1	1987		606	438	1519	3339	60649	117.32
5	1987		631	440	1326	3105	59811	117.00
7	1987		582	441	1255	3509	60183	112.68
8	1987		592	441	1255	3737	64038	113.21
9	1987		603	443	1544	3509	60183	112.68
10	1987		625	448	1533	4489	64038	113.21
11	1987		654	477	1533	4286	67379	114.73
12	1987		653	482	1533	4286	67379	113.92
1	1988		662	482	1533	4700	68883	113.14
2	1988		669	488	1533	4484	68883	113.87
3	1988		674	488	1517	4468	68883	113.54
4	1988		677	500	2044	4611	72807	111.99
5	1988		677	501	1744	4344	72807	115.83
6	1988		693	509	1324	4465	73005	111.19
7	1988		659	509	1225	3971	70329	107.15
8	1988		648	509	1228	4018	70329	107.83
9	1988		662	547	1348	4363	72614	107.54
10	1988		673	548	1512	4324	72614	107.54
11	1988		684	548	1446	5088	76055	107.54
12	1988		675	549	1596	5148	76055	107.54
1	1989		694	535	1438	5634	73554	103.07
2	1989		467	517	1410	6463	73326	98.17
3	1989		469	522	2011	5529	78880	96.43
4	1989		479	544	1694	9226	84336	98.41
5	1989		473	542	1807	6883	79229	96.74
6	1989		496	538	1132	6123	71336	92.74
7	1989		461	542	1163	5894	71762	92.70
8	1989		445	539	1194	5156	71004	90.92
9	1989		436	561	1429	7157	77564	92.75
10	1989		443	577	1653	7383	81643	93.57
11	1989		445	589	1600	7252	82171	94.08
12	1989		461	586	1814	2551	102311	91.67
STARFSMANNAFÉLAG REYKJAVÍKURBORGAR ALLS								
1	1987		1955	3362	12510	2828	48958	100.00
2	1987		1998	3843	13348	3463	55245	112.66
3	1987		1977	3906	13682	3405	56153	112.85
4	1987		1978	3939	14750	3321	57470	112.25
5	1987		2009	3961	16202	3413	59230	111.50
6	1987		2171	4035	12871	2767	55991	111.34
7	1987		2170	4042	12310	2639	55375	109.63
8	1987		2106	4059	12228	2841	55662	107.41
9	1987		1996	4139	14724	3216	59334	108.30
10	1987		2013	4434	16753	3692	64787	114.13
11	1987		2032	4446	16818	3818	65103	110.90
12	1987		2033	4528	15057	3380	63717	110.74
1	1988		2031	4644	15884	4097	66409	109.48
2	1988		2033	4771	16125	3620	67459	111.58
3	1988		2045	4791	17443	3968	69324	111.02
4	1988		2081	4793	21144	4031	73127	109.54
5	1988		2118	4822	19334	3374	71354	108.42
6	1988		2203	5144	16439	3560	71841	112.10
7	1988		2203	5165	15855	3291	69991	107.90
8	1988		2230	5144	15088	3228	69964	106.14
9	1988		2111	5110	15658	3228	72274	106.75
10	1988		2097	5221	19022	4384	75604	106.12
11	1988		2123	5221	19212	4100	75562	105.92
12	1988		2103	5220	19160	4449	75533	105.86
1	1989		2108	5122	18252	5546	74937	105.86
2	1989		1898	5074	19202	6374	75586	105.86
3	1989		1903	5111	23293	6374	80808	97.81
4	1989		1931	5338	18734	1136	83945	100.80
5	1989		1959	5360	21888	5564	81955	98.40
6	1989		2173	5314	16846	5187	75181	94.77
7	1989		2162	5364	14661	4754	73061	95.00
8	1989		2068	5373	15579	4669	73987	93.90
9	1989		1921	5604	17291	5647	78981	95.98
10	1989		1900	5661	19994	6408	83013	95.07
11	1989		1882	5774	20555	6247	84549	95.54
12	1989		1898	5775	20589	2586	104208	93.53

REYKJAVIKURBORG LAUNAUPPHÆÐIR OG KAUPMATTUR TAXTALAUNA MED JANÚAR 1987 = 100

FÉLAG	MAN	ÁR	STÖÐU- GILDI	TAXTA- LAUN	YFIRV. LAUN	ÖNNUR LAUN	HEILDAR- LAUN	KAUPM. TAXTAL.
ST.RV. HASKOLAHÖPUR								
1	1987	303	83	50071	22160	1820	74051	100.00
2	1987	305	92	58262	30516	1725	90503	114.67
3	1987	304	72	58105	26007	1780	85892	112.70
4	1987	309	78	58324	23963	1970	84257	111.57
5	1987	317	12	58311	25604	2056	85971	110.20
6	1987	339	91	60221	29555	2239	92015	111.57
7	1987	343	15	59885	22937	2331	85153	109.04
8	1987	316	54	59528	23169	2217	84914	105.76
9	1987	301	00	60898	31068	2342	94308	106.98
10	1987	292	82	64203	35715	2822	102740	110.96
11	1987	294	59	63876	31520	2384	97780	106.97
12	1987	296	35	64651	32066	1822	98539	106.17
1	1988	298	00	66503	28223	2658	97384	105.30
2	1988	305	06	67579	31693	2544	101816	106.11
3	1988	306	59	69232	37174	2638	109044	107.19
4	1988	305	77	69234	31938	2931	104103	106.71
5	1988	314	93	70035	33932	2711	106678	105.56
6	1988	346	44	72935	39116	3057	115108	106.28
7	1988	352	35	73861	30911	2570	107342	104.02
8	1988	345	32	74512	31160	2804	108476	102.80
9	1988	343	33	73847	38434	2813	115094	101.15
10	1988	343	34	73634	36694	3029	113357	100.52
11	1988	344	34	73593	38771	3132	115496	100.39
12	1988	346	39	74323	38225	2776	115324	101.20
1	1989	374	50	73654	36009	6898	116561	98.64
2	1989	376	62	74072	39609	6452	120133	97.73
3	1989	381	01	74559	45624	6821	127004	95.75
4	1989	379	04	75787	37325	13149	126261	95.26
5	1989	373	68	76391	43599	7563	127553	94.16
6	1989	413	11	76251	46403	6927	129581	91.30
7	1989	426	32	78714	36220	6738	121098	92.91
8	1989	417	85	78717	35843	6860	121420	92.36
9	1989	410	81	80498	42729	7033	130260	92.57
10	1989	412	84	80634	42590	7725	130949	90.93
11	1989	412	69	82194	42858	7815	132867	91.31
12	1989	411	29	82431	49121	28072	159624	89.63
MEINATÉKNAFÉLAG ÍSLANDS (R.BORG)								
1	1989	30	22	63669	33598	5391	102658	100.00
2	1989	28	46	64853	31238	6260	102351	100.35
3	1989	30	08	65076	35303	6454	106831	98.91
4	1989	29	58	67155	33229	12827	113211	99.92
5	1989	31	20	69099	37383	5960	112442	99.88
6	1989	30	71	69686	37648	5904	113238	99.85
7	1989	31	15	71246	36684	6254	114184	99.73
8	1989	29	97	71009	36542	6255	113806	97.70
9	1989	31	43	72186	34498	6217	112901	97.35
10	1989	32	54	74355	37001	6374	117730	98.33
11	1989	32	52	74204	35187	6167	115558	96.67
12	1989	32	03	74116	40404	26618	141138	94.51
FÖSTRUFÉLAG ÍSLANDS (R.BORG)								
1	1989	276	00	56780	9011	1888	67679	100.00
2	1989	209	45	57222	10123	1664	69009	99.28
3	1989	210	37	57688	10679	1622	69989	97.42
4	1989	207	53	60467	11603	8376	80446	99.94
5	1989	212	59	60558	11578	1646	73782	98.16
6	1989	224	70	60727	10575	1658	72960	95.61
7	1989	212	38	61481	9842	1449	72772	96.13
8	1989	219	30	61689	8213	1835	71737	95.18
9	1989	233	35	62644	9933	1676	74253	94.73
10	1989	234	93	62552	12352	1751	76655	92.76
11	1989	235	21	63880	12629	1905	78414	93.32
12	1989	230	39	63985	12621	20460	97066	91.49
HJUKRUNARFÉLAG ÍSLANDS								
1	1987	231	02	46504	19224	6799	72527	100.00
2	1987	233	99	46549	19784	5857	72190	98.65
3	1987	234	42	50520	22645	7688	80853	105.50
4	1987	237	04	52699	22777	7756	93232	108.54
5	1987	239	53	53788	25508	7626	90922	109.45
6	1987	229	99	57622	27329	6903	91853	114.94
7	1987	218	54	56638	30128	5679	92445	111.04
8	1987	218	32	55874	28011	6654	90539	106.88
9	1987	223	72	55326	29255	7163	91744	104.65

REYKJAVÍKURBORG LAUNAUPPHÆDIR OG KAUPMÁTTUR TAXTALAUNA MED JANÚAR 1987 = 100

FÉLAG	MAN	ÁR	STÖDU- GILDI	TAXTA- LAUN	YFIRV. LAUN	ÖNNUR LAUN	HEILDAR- LAUN	KAUPM. TAXTAL.
HJÚKRUNARFÉLAG ÍSLANDS								
10	1987		238.65	59393	26796	8653	94842	110.52
11	1987		238.56	58827	29063	8846	96536	105.71
11	1987		238.37	60272	15157	4825	80254	106.57
12	1987		231.50	61244	30934	10036	102214	104.41
1	1988		227.79	61244	27888	8818	99384	105.97
2	1988		229.50	62211	30813	9113	102137	104.21
3	1988		234.06	62211	30813	9099	113431	104.59
4	1988		227.43	63334	40939	8908	109324	104.77
5	1988		227.85	64557	35839	8904	108962	110.87
6	1988		227.55	70867	29359	8904	109194	108.00
7	1988		219.90	69930	31508	7783	111123	106.95
8	1988		212.43	69930	34133	7685	111123	103.09
9	1988		216.77	69930	27643	8628	106179	101.66
10	1988		224.51	69170	27609	9772	106551	101.41
11	1988		230.48	69357	29533	9268	108163	102.87
12	1988		227.66	69855	30734	9791	110380	102.62
1	1989		237.47	69083	27520	9082	105685	99.96
2	1989		238.82	69663	24200	10816	104679	99.96
3	1989		239.18	70098	33774	10883	114755	99.99
4	1989		238.05	70189	28510	10378	109077	99.29
5	1989		233.42	72554	33773	10453	116780	99.66
6	1989		232.13	72520	25325	8784	109629	99.49
7	1989		230.66	72555	28103	8942	106600	99.89
8	1989		222.84	72769	33685	7606	114060	91.93
9	1989		238.87	72089	29376	9434	110899	89.25
10	1989		244.81	74417	26810	10808	112035	90.35
11	1989		244.24	74336	26262	10727	111325	88.91
12	1989		247.59	74523	29897	29737	134157	87.25

BANDALÖGIN, LAUNAUPPHEDIR OG KAUPMATTUR TAXTALAUNA MED JANUAR 1987 = 100

FÉLAG	MÁN	ÁR	STÖDU- GILDI	TAXTA- LAUN	YFIRV. LAUN	ÖNNUR LAUN	HEILDAR- LAUN	KAUPM. TAXTAL.
STARFSMAFFÉLAG REYKJAVIKURBORGAR ALLS								
1	1987	1955.09	33620	12510	2828	48958	100.00	
2	1987	1998.58	38434	13348	3463	55245	112.86	
3	1987	1977.18	39066	13682	3405	56153	112.85	
4	1987	1978.79	39399	14750	3321	57470	112.25	
5	1987	2009.11	39615	16202	3413	59230	111.50	
6	1987	2171.99	40353	12871	2767	55991	111.34	
7	1987	2170.56	40426	12310	2639	55375	109.63	
8	1987	2106.97	40593	12228	2841	55662	107.41	
9	1987	1996.07	41394	14724	3216	59334	108.30	
10	1987	2013.58	44342	16753	3692	64787	114.13	
11	1987	2032.11	44467	16818	3818	65103	110.90	
12	1987	2037.48	45280	15057	3380	63717	110.74	
1	1988	2031.05	46428	15884	4097	66409	109.48	
2	1988	2045.18	47714	16125	3620	67459	111.58	
3	1988	2074.35	47913	17443	3968	69324	111.02	
4	1988	2081.82	47954	21142	4031	73127	109.54	
5	1988	2118.60	48295	19335	3724	71354	108.42	
6	1988	2303.49	51658	16493	3690	71841	112.10	
7	1988	2287.46	51444	15256	3291	69991	107.90	
8	1988	2230.06	51654	15082	3228	69964	106.14	
9	1988	2111.02	55233	16658	3783	72774	106.75	
10	1988	2097.39	552198	19022	4384	75604	106.12	
11	1988	2122.97	552133	19219	4410	75762	105.92	
12	1988	21103.88	552203	19160	4490	75853	105.86	
1	1989	2108.39	511220	18252	4565	74937	102.16	
2	1989	1898.69	50748	19202	5636	75586	99.72	
3	1989	1903.73	51141	23293	6374	80808	97.81	
4	1989	1931.64	53848	18734	11363	83945	100.80	
5	1989	1939.94	53603	21888	5564	81055	98.40	
6	1989	2179.89	53148	16846	5187	75181	94.77	
7	1989	2162.35	53646	14661	4754	73061	95.00	
8	1989	2068.50	53739	15579	4669	73987	93.90	
9	1989	1921.08	56043	17291	5647	78981	95.98	
10	1989	1900.96	56611	19994	6408	83013	95.07	
11	1989	1832.88	57747	20555	6247	84549	95.54	
12	1989	1892.46	57753	20589	25866	104208	93.53	
BSRB FÉLÖGIN HJA RÍKINU, ALLS								
1	1987	6863.56	36974	18624	3417	59015	100.00	
2	1987	6864.50	41971	18582	3576	64129	111.87	
3	1987	6920.95	42274	18635	3588	64497	111.03	
4	1987	6956.98	42623	21584	3733	67943	108.42	
5	1987	7223.27	42343	22395	3739	68363	108.37	
6	1987	7940.92	42716	19897	3244	65856	107.17	
7	1987	7998.49	42625	17850	2875	63350	105.11	
8	1987	7755.84	43163	18437	3083	64688	103.85	
9	1987	7046.58	44135	17493	2659	64288	105.00	
10	1987	7036.31	47822	23056	4072	74950	111.92	
11	1987	7124.58	47753	23831	4287	75859	108.30	
12	1987	7178.24	47685	18997	2877	69559	106.05	
1	1988	7065.76	49201	24243	4614	78058	105.09	
2	1988	7109.15	50456	22794	4422	77672	107.29	
3	1988	7140.46	50734	23001	4275	78010	106.89	
4	1988	7021.64	50796	22315	3590	76701	105.59	
5	1988	7438.19	50503	23944	4041	78488	103.09	
6	1988	8142.50	54089	23696	4246	82031	106.73	
7	1988	8169.65	54140	22163	4038	80341	103.25	
8	1988	7951.10	54431	22125	3990	80546	101.70	
9	1988	7277.65	55382	21401	3737	80520	102.72	
10	1988	7222.79	55577	23930	4893	84400	102.74	
11	1988	7268.09	55689	25088	5157	85934	102.88	
12	1988	7439.95	55479	23454	4826	83759	102.30	
1	1989	7188.79	56016	26289	5417	87722	101.99	
2	1989	7148.30	56352	23738	4961	85051	100.69	
3	1989	7196.57	56809	24138	4938	85885	98.79	
4	1989	7216.42	59179	26796	5292	91267	100.73	
5	1989	7451.54	59046	26016	4951	90013	98.56	
6	1989	8114.46	58142	24060	4335	86537	94.27	
7	1989	8203.54	58024	21633	4205	83862	93.43	
8	1989	8019.24	58445	21807	4203	84455	92.86	
9	1989	8203.04	61487	24971	4681	91139	95.75	
10	1989	7108.32	62202	24598	5390	92190	94.99	
11	1989	7156.32	63321	26437	5630	95388	95.26	
12	1989	7311.98	63179	25679	5337	94195	93.03	

BANDALÖGIN, LAUNAUPPHÆDIR OG KAUPMATTUR TAXTALAUNA MEÐ JANUAR 1987 = 100

FÉLAG	MÁN	ÁR	STÖDU- GILDI	TAXTA- LAUN	YFIRV. LAUN	ÖNNUR LAUN	HEILDAR- LAUN	KAUPM. TAXTAL.
BHRM FÉLÖGIN, ALLS								
1	1987		2698.58	51099	17821	1825	70745	100.00
2	1987		2768.55	55718	19862	1885	77465	107.46
3	1987		2756.75	56420	24707	1961	83088	107.23
4	1987		2756.75	56420	24707	1961	83088	105.76
5	1987		2744.95	57129	29594	2038	88761	105.79
6	1987		2836.26	58694	12248	2106	73048	105.55
7	1987		2942.64	58985	10951	1900	71836	105.24
8	1987		2913.03	59185	11111	1773	72069	103.03
9	1987		2770.22	60222	17079	811	78112	103.66
10	1987		2881.67	64866	23756	2320	90942	109.85
11	1987		2910.00	64967	24637	2221	91825	105.61
12	1987		2896.31	65600	28794	962	95356	105.56
1	1988		2851.10	66798	21592	2398	90788	103.64
2	1988		3009.64	68382	22705	2269	93356	105.21
3	1988		2891.62	68981	25150	2130	96261	105.16
4	1988		2893.62	68937	21667	1087	91691	103.61
5	1988		2945.42	69637	32609	2338	104584	102.85
6	1988		3042.59	74477	17308	2326	94111	106.34
7	1988		3127.40	74512	15172	2305	91989	102.82
8	1988		3095.49	74352	15487	2225	92064	100.52
9	1988		3057.78	74264	23910	1153	99327	99.67
10	1988		3102.10	74511	29065	2526	106102	99.67
11	1988		3141.37	74688	30340	2481	107509	99.84
12	1988		3135.25	74750	37482	2405	114637	99.74
1	1989		3163.05	74873	28192	2581	105646	98.26
2	1989		3269.21	75279	27072	2393	104744	97.33
3	1989		3109.27	75961	29110	2676	107747	95.59
4	1989		3143.74	77480	25658	2597	105735	95.43
5	1989		3143.74	77480	25658	2597	105735	93.58
6	1989		3178.20	78966	22281	2520	103767	92.64
7	1989		3254.00	80209	16220	2135	98564	93.45
8	1989		3245.98	80157	20896	2477	103530	92.15
9	1989		3192.31	81974	33762	2522	118258	92.37
10	1989		3177.44	82135	31824	2791	116750	90.76
11	1989		3181.81	83450	33022	3073	119545	90.84
12	1989		3178.50	83805	34041	3185	121031	89.29
KENNARASAMBAND ISLANDS, ALLS								
1	1987		2698.99	43498	14278	58	57834	100.00
2	1987		2708.15	49225	16871	65	66161	111.53
3	1987		2702.15	49251	16941	65	66255	109.96
4	1987		2697.58	49287	16758	65	66110	108.53
5	1987		2684.98	49330	15458	51	64839	107.31
6	1987		2675.98	50725	1003	2	51737	108.18
7	1987		2649.64	50894	673	2	51569	106.67
8	1987		2598.16	51315	834	15	52164	104.94
9	1987		2563.98	53156	11529	18	64703	107.49
10	1987		2779.30	56576	19374	137	76087	112.55
11	1987		2767.75	56587	20527	134	77248	109.08
12	1987		2762.62	58256	20513	106	78875	110.12
1	1988		2787.43	58271	20352	146	78769	106.21
2	1988		2791.44	59743	21305	171	81219	107.98
3	1988		2786.48	59779	21627	150	81556	107.06
4	1988		2776.66	59809	19885	125	79819	105.60
5	1988		2769.11	59833	20019	79	79931	103.81
6	1988		2757.09	65284	2072	4	67360	109.50
7	1988		2726.66	65696	1200	14	66910	106.50
8	1988		2735.99	66054	1411	25	67490	104.91
9	1988		2783.77	65835	17237	53	83125	103.80
10	1988		2879.45	65548	24208	119	89875	103.00
11	1988		2893.00	65598	24755	126	90479	103.01
12	1988		2877.12	65640	23313	114	89067	102.88
1	1989		2908.41	65617	25591	122	91330	101.16
2	1989		2916.85	66005	24490	142	90637	100.25
3	1989		2945.15	66406	24671	117	91194	98.16
4	1989		2941.56	66422	24940	155	91517	96.10
5	1989		2937.71	70068	23897	67	94032	99.42
6	1989		2923.34	70145	2259	4	72408	96.68
7	1989		2878.21	71918	1360	13	73291	98.44
8	1989		2921.96	72094	1747	5	73846	97.37
9	1989		2947.12	73159	21155	94	94408	96.84
10	1989		2975.18	73186	25321	143	98650	95.00
11	1989		2983.93	74267	26667	144	101078	94.97
12	1989		2976.67	74270	25687	115	100072	92.96

YMSIR HOPAR LAUNAUPPHEDIR OG KAUPMATTUR TAXTALAUNA MED JANUAR 1987 = 100

FÉLAG	MÁN	ÁR	STÖÐU- GILDI	TAXTA- LAUN	YFIRV. LAUN	ÖNNUR LAUN	HEILDAR- LAUN	KAUPM. TAXTAL.
FÉLAG ÍSLENSKRA FLUGUMFERÐARSTJORA								
1	1987		85.00	45896	46904	21061	113861	100.00
1	1987		87.38	62136	57163	17902	137201	133.42
2	1987		85.00	61953	57106	18183	137242	131.09
3	1987		85.52	62104	74543	19056	155703	129.61
4	1987		88.34	64089	65944	19331	149364	129.54
5	1987		88.50	63898	66725	19482	150105	126.93
6	1987		90.50	65054	76563	20609	162226	126.09
7	1987		90.50	65054	69872	20223	155149	124.68
8	1987		90.50	65957	62691	20253	152519	131.18
9	1987		90.00	69840	65420	20410	155670	127.60
10	1987		90.00	69885	59319	20421	149625	125.20
11	1987		90.00	72570	72570	22922	166339	122.38
12	1987		88.00	72467	78340	23528	174335	124.14
1	1988		88.98	72672	69496	22199	164367	123.35
2	1988		90.06	72419	66870	22441	161730	121.18
3	1988		90.63	74441	74172	23975	172588	122.41
4	1988		90.79	79809	80390	26065	186264	126.87
5	1988		93.00	79687	79838	26412	185937	122.43
6	1988		93.00	79746	89555	26899	196200	120.03
7	1988		93.00	79778	84565	27301	161644	119.21
8	1988		94.00	79842	84565	25227	176227	118.90
9	1988		93.00	79964	77176	25526	182596	119.01
10	1988		93.65	80408	70585	24986	175589	119.45
11	1988		93.00	80222	88332	26683	195386	117.21
12	1988		93.00	80724	74343	25875	180321	116.20
1	1989		93.00	81375	81823	27003	190201	114.01
2	1989		92.57	81328	89947	28773	200048	111.52
3	1989		91.00	81428	49680	29194	160302	109.50
4	1989		99.75	88368	81448	28977	198793	115.43
5	1989		99.39	89698	97078	31068	217844	116.36
6	1989		94.00	89742	108480	31777	229399	114.37
7	1989		95.00	91275	93590	31092	215957	114.31
8	1989		95.00	91275	77424	29116	197815	112.29
9	1989		93.69	95134	81868	30742	207744	115.30
10	1989		94.00	94841	66740	28721	190302	112.51
STARFSMANNAFÉLAG SINFONIHLJOMSVEITAR ÍSLANDS								
1	1987		68.74	46677	6161	373	53211	100.00
2	1987		69.45	53744	1758	1199	56701	113.47
3	1987		69.19	53803	4601	665	59069	111.94
4	1987		69.18	53794	5081	1111	59986	110.39
5	1987		69.51	53828	8388	728	62944	109.12
6	1987		70.63	55051	23067	380	78498	109.41
7	1987		66.00	55674	1287	0	56961	108.74
8	1987		66.00	55723	1107	0	56830	106.20
9	1987		71.67	56822	2970	0	59792	107.08
10	1987		72.27	61486	16243	1781	79510	113.99
11	1987		71.78	61512	9255	793	71560	110.50
12	1987		70.48	61192	1840	752	63784	107.80
1	1988		65.01	63642	277	133	64052	108.10
2	1988		0.50	49652	17874	1716	69242	83.63
3	1988		0.50	49652	64546	1716	115914	82.87
4	1988		0.50	49652	6952	2574	59178	81.69
5	1988		4.82	56721	141739	11764	210224	91.71
6	1988		78.47	70548	15521	410	86479	110.27
7	1988		62.00	72744	2444	0	75188	109.90
8	1988		63.49	72904	1684	0	74588	107.90
9	1988		70.52	70944	18522	0	89466	104.23
10	1988		69.94	71183	11360	1175	83718	104.24
11	1988		70.48	71215	8213	2515	81943	104.21
12	1988		70.21	71181	3075	1766	76022	103.97
1	1989		69.90	71694	2198	1741	75633	103.00
2	1989		69.91	72146	3070	1376	76592	102.11
3	1989		69.53	74861	7534	2113	84508	103.13
4	1989		68.93	74848	2891	1631	79370	100.92
5	1989		69.68	72539	5863	878	79280	95.91
6	1989		75.74	76597	22619	465	99681	95.38
7	1989		63.78	79452	5804	617	85873	101.34
8	1989		65.38	79613	1131	0	80744	100.20
9	1989		71.22	80264	31915	3114	115293	99.01
10	1989		69.27	80435	1095	762	82292	97.30
11	1989		70.62	81720	8442	2295	92457	97.38
12	1989		69.90	81593	10672	2165	94430	95.17

YMSIR HOPAR LAUNAUPPHÆDIR OG KAUPMATTUR TAXTALAUNA MED JANUAR 1987 = 100

FÉLAG MAN ÁR	STÖDU- GILDI	TAXTA- LAUN	YFIRV. LAUN	ÖNNUR LAUN	HEILDAR- LAUN	KAUPM. TAXTAL.
TEKNIFRÆÐINGAFÉLAG ÍSLANDS, RÍKISSTARFSMENN						
1 1987	112.14	55446	36807	1384	93637	100.00
2 1987	112.31	55615	43766	2319	101700	98.85
3 1987	113.49	59741	44142	1871	105754	104.64
4 1987	113.00	59834	44645	3079	107558	103.36
5 1987	114.12	59744	55838	1898	117480	101.96
6 1987	117.28	61251	41675	2240	105166	102.48
7 1987	115.11	61564	44366	2035	107965	101.23
8 1987	114.13	61921	41528	2300	105749	99.35
9 1987	112.00	62047	42726	330	105103	98.43
10 1987	115.58	70593	61175	2983	134751	110.17
11 1987	117.00	70540	58658	1800	130998	106.68
12 1987	117.08	70604	51641	3099	125344	104.70
1 1988	115.76	72586	47996	2215	122797	103.79
2 1988	114.04	75273	52596	2918	130787	106.73
3 1988	115.49	76063	55899	2665	134627	106.87
4 1988	114.23	76168	59756	201	106125	105.50
5 1988	112.95	76669	56963	2976	136568	104.31
6 1988	113.46	82336	59969	3495	145800	108.34
7 1988	114.86	82754	62392	3459	148605	105.25
8 1988	115.35	82335	56600	2688	141593	102.55
9 1988	118.31	81634	55430	423	137487	100.97
10 1988	121.00	81598	59482	3468	144548	100.59
11 1988	118.39	81859	56931	173	118963	100.85
12 1988	120.84	81961	54932	3852	140745	100.78
1 1989	117.39	82552	55814	2395	140761	99.84
2 1989	118.00	83306	60521	2799	146387	98.97
3 1989	119.66	83344	58685	2589	144739	96.79
4 1989	120.66	83333	57476	3681	144475	94.57
5 1989	122.11	83333	59981	2751	146028	92.72
6 1989	124.93	86279	65303	3260	155321	93.81
7 1989	124.00	88827	65230	2741	157241	94.78
8 1989	123.73	88827	62335	3666	153929	94.12
9 1989	123.19	90577	61448	4553	163374	94.05
10 1989	123.00	90411	70348	3192	1631056	92.07
11 1989	124.59	92107	72596	2826	167329	92.40
12 1989	125.00	92107	63444	4575	160195	90.51
KJARAFÉL. OPINB. STARFSM. Í VERKFR. FÉL. ÍSLANDS						
1 1987	168.11	59918	33774	613	94305	100.00
2 1987	167.25	59843	37593	712	98148	98.43
3 1987	169.43	65259	39601	829	105689	105.77
4 1987	172.62	65052	35750	839	101641	103.99
5 1987	175.06	65012	48539	876	114427	102.67
6 1987	177.56	66704	38594	703	106001	103.27
7 1987	177.76	66649	42393	721	109763	101.41
8 1987	178.99	66588	39874	558	107020	98.86
9 1987	177.12	66833	39248	356	106437	98.11
10 1987	178.71	78746	55723	995	135464	113.72
11 1987	177.89	78998	51417	1202	131517	110.55
12 1987	181.39	78963	49115	1035	129113	108.36
1 1988	181.20	81405	46416	1106	128927	107.71
2 1988	179.17	83058	49480	1055	133593	108.93
3 1988	177.72	84402	52772	853	138027	109.74
4 1988	173.94	84600	36723	565	121888	108.44
5 1988	178.89	84300	51333	1058	136691	106.13
6 1988	187.43	90083	55439	1266	146788	109.69
7 1988	189.84	89433	53445	1566	144444	105.25
8 1988	193.18	89211	50231	405	139847	102.86
9 1988	190.82	89027	52151	522	141700	101.90
10 1988	190.50	89139	57822	1080	148041	101.68
11 1988	183.06	89418	42380	595	132393	101.94
12 1988	192.97	89365	53509	2014	144888	101.69
1 1989	189.94	89870	55279	1654	146803	100.58
2 1989	192.23	90465	55407	1351	147223	99.74
3 1989	193.69	90870	55408	1532	147810	97.52
4 1989	193.88	90795	56202	1262	148259	95.37
5 1989	194.79	93755	59524	1510	154789	96.57
6 1989	204.08	93973	58589	1083	153645	94.02
7 1989	201.74	95055	59309	1006	155370	94.45
8 1989	200.46	95344	60647	1093	157084	93.48
9 1989	196.79	97055	62052	1211	160318	93.26
10 1989	198.76	97049	62052	1119	161867	91.45
11 1989	199.25	98616	62052	1051	165620	91.55
12 1989	196.48	98889	65158	1156	165203	89.86

YMSIR HOPAR LAUNAUPPHÆDIR OG KAUPMÁTTUR TAXTALAUNA MED JANUAR 1987 = 100

FÉLAG	MÁN	ÁR	STÖÐU- GILDI	TAXTA- LAUN	YFIRV. LAUN	ÖNNUR LAUN	HEILDAR- LAUN	KAUPM. TAXTAL.
UTAN FÉLAGA RÁÐHERRARÖÐUN								
1	1987		176.67	693224	230338	336	92698	100.00
2	1987		163.40	70481	28634	650	99765	100.20
3	1987		163.26	79554	29332	745	109631	111.45
4	1987		165.56	78764	39153	724	118641	108.83
5	1987		167.00	78132	37418	810	116360	106.65
6	1987		167.89	80262	27447	951	108660	107.40
7	1987		174.05	80896	28824	805	110525	106.39
8	1987		173.57	81235	29649	687	111571	104.24
9	1987		171.27	81908	27995	673	110576	103.93
10	1987		191.19	86979	36786	660	124425	108.57
11	1987		186.01	86979	40777	792	128548	105.20
12	1987		188.99	86820	37717	967	125504	102.98
1	1988		188.63	89714	35790	950	126454	102.60
2	1988		192.26	91806	38912	1105	131823	104.12
3	1988		190.57	93422	41687	1096	136205	104.98
4	1988		187.90	94074	35102	1183	130359	104.22
5	1988		187.59	93904	44549	1135	139588	102.23
6	1988		188.93	100267	56237	1413	157917	105.53
7	1988		193.17	100210	41909	1099	143218	101.93
8	1988		194.30	100242	38527	1212	139981	99.89
9	1988		191.51	100532	40574	1032	142138	99.45
10	1988		196.00	100228	40184	1199	141611	98.82
11	1988		199.22	100311	37309	1255	138875	98.84
12	1988		199.51	100777	39652	1139	141568	99.11
1	1989		194.08	100795	44602	1458	146855	97.50
2	1989		194.58	101003	43870	1226	146099	96.25
3	1989		191.02	102960	44040	1234	148234	95.50
4	1989		190.59	103263	58206	1648	163117	93.74
5	1989		195.92	106378	55312	1696	161202	94.71
6	1989		198.37	106488	55735	1184	163407	92.09
7	1989		196.07	107730	41963	1401	151094	92.52
8	1989		194.17	108160	42245	1138	151543	91.66
9	1989		195.83	110442	55739	1224	167405	91.73
10	1989		193.26	110495	45882	1439	157816	89.99
11	1989		195.55	112147	47597	1513	161257	89.98
12	1989		198.61	112189	48247	1460	161896	88.11

KAUPMATTUR ADILDARFÉLAGA BSRBR EFTIR ARSFJÓRDUNGUM (1.ARSFJ.1987 = 100)

FÉLAG	ARSFJ. OG AR	KAUPM. TAXTAL.	KAUPM. YFIRV.	KAUPM. ÖNNUR L.	KAUPM. HEILDL.
FÉLAG FLUGMÁLASTARFSMANNA RÍKISINS					
1	1987	100.00	100.00	100.00	100.00
2	1987	100.95	108.31	99.64	103.55
3	1987	98.89	90.27	81.43	94.39
4	1987	101.66	88.36	97.18	96.44
1	1988	99.73	94.14	113.90	98.77
2	1988	99.34	94.20	113.70	98.56
3	1988	96.53	90.14	105.26	94.86
4	1988	96.68	93.99	114.62	97.08
1	1989	93.74	104.95	124.25	100.19
2	1989	94.07	94.41	116.82	95.94
3	1989	90.34	90.61	98.69	91.08
4	1989	90.33	82.82	106.10	88.79
FÉLAG ÍSLENSKRA SIMAMANNA SKRIFSTH.					
1	1987	100.00	100.00	100.00	100.00
2	1987	99.07	116.85	90.86	103.29
3	1987	99.45	92.95	86.03	95.26
4	1987	99.72	117.82	109.50	104.54
1	1988	99.10	112.62	107.01	101.28
2	1988	99.10	118.18	101.23	101.79
3	1988	94.46	99.32	95.64	95.71
4	1988	94.94	105.32	105.96	97.86
1	1989	92.34	93.34	95.65	92.69
2	1989	91.13	93.69	89.97	92.87
3	1989	87.70	79.52	83.36	85.52
4	1989	87.99	93.01	91.74	89.36
FÉLAG ÍSLENSKRA SIMAMANNA TEKNIHOPUR					
1	1987	100.00	100.00	100.00	100.00
2	1987	100.03	111.91	93.00	104.90
3	1987	98.39	96.77	82.84	97.14
4	1987	99.84	101.79	89.23	100.30
1	1988	97.04	87.30	91.66	92.65
2	1988	96.14	86.02	84.74	91.37
3	1988	94.74	79.77	88.55	88.06
4	1988	94.04	78.02	105.57	87.54
1	1989	92.14	78.11	103.32	86.49
2	1989	89.21	82.69	84.36	86.23
3	1989	86.64	74.58	71.89	80.91
4	1989	84.93	65.64	77.03	76.33
FÉLAG ÍSLENSKRA SIMAMANNA ALLS					
1	1987	100.00	100.00	100.00	100.00
2	1987	99.45	112.80	91.78	103.90
3	1987	97.14	93.84	83.20	95.52
4	1987	99.58	105.34	96.54	101.50
1	1988	96.90	94.25	97.04	95.97
2	1988	95.87	94.71	90.30	95.28
3	1988	94.13	83.32	89.35	90.17
4	1988	94.36	85.77	104.80	91.68
1	1989	92.18	82.51	99.88	89.03
2	1989	90.18	87.56	84.88	89.09
3	1989	87.06	75.20	75.92	82.53
4	1989	86.50	74.15	82.77	82.03
FÉLAG STARFSMANNA STJÓRNARRÁÐSINS					
1	1987	100.00	100.00	100.00	100.00
2	1987	100.87	105.29	121.16	102.14
3	1987	98.49	90.01	114.40	96.36
4	1987	102.28	119.99	102.24	106.91
1	1988	100.89	110.80	111.01	103.54
2	1988	99.53	99.20	97.02	99.43
3	1988	97.05	101.42	116.45	98.30
4	1988	97.35	111.27	112.15	101.06
1	1989	95.05	102.08	106.05	96.95
2	1989	92.03	98.17	99.71	96.68
3	1989	88.77	85.07	103.10	89.88
4	1989	87.82	97.40	107.12	90.43
FÖSTRUFÉLAG ÍSLANDS					
1	1989	100.00	100.00	100.00	100.00
2	1989	95.54	71.47	113.75	91.53
3	1989	91.35	87.14	207.36	91.39

KAUPMÁTTUR TAXTALAUNA BSRB RÍKISSTARFSMANNA EFTIR ÁRSFJÓRÐUNGUM

1. ársfjórðungur 1987 = 100

ATH KVABINN ER SKORINN VIÐ 70

115

110

K a u p m á t t a r s t i g

105

100

95

90

85

80

75

70

FPR

FÍS/S

FÍS/T

FÍS/A

FFS

FÍ

HFÍ

123412341234 123412341234 123412341234 123412341234 123412341234 123412341234 234 123412341234

KOS MANS 1990

ÁRSFJÓRÐUNGAR FRÁ 1. ÁRSFJ. 1987 TIL OG MEÐ 4. ÁRSFJ. 1989

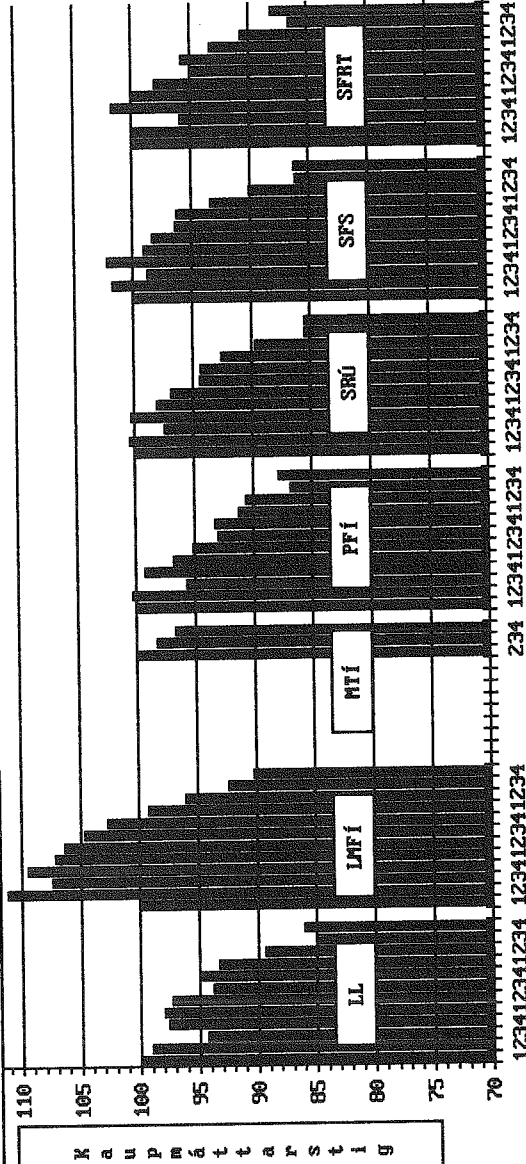
KAUPMÁTUR AÐILDARFÉLAGA BSRBR EFTIR ÁRSFJÓRDUNGUM (1.ÁRSFJ.1987 = 100)

FÉLAG	ÁRSFJ. OG ÁR	KAUPM. TAXTAL.	KAUPM. YFIRV.	KAUPM. ÖNNUR L.	KAUPM. HEILD.
HJÚKRUNARFÉLAG ÍSLANDS					
1	1987	100.00	100.00	100.00	100.00
2	1987	108.29	136.91	104.50	113.85
3	1987	105.62	97.17	65.41	100.35
4	1987	107.25	94.33	76.20	101.79
1	1988	104.98	117.19	100.13	107.06
2	1988	104.73	119.60	77.04	105.30
3	1988	103.39	86.68	65.79	96.56
4	1988	101.66	103.09	97.25	101.56
1	1989	99.14	98.56	90.90	98.28
2	1989	95.55	93.16	84.56	94.07
3	1989	93.57	81.95	72.45	89.27
4	1989	91.28	83.31	84.08	88.99
LANDSSAMBAND LÖGREGLUMANNA					
1	1987	100.00	100.00	100.00	100.00
2	1987	99.04	115.94	93.50	105.13
3	1987	94.34	92.33	79.61	91.65
4	1987	97.66	93.25	89.49	94.84
1	1988	98.01	91.29	99.38	95.48
2	1988	97.32	92.35	93.43	94.82
3	1988	93.86	84.03	85.56	88.85
4	1988	94.84	75.76	94.05	87.06
1	1989	93.32	84.13	101.74	90.70
2	1989	89.41	80.90	91.40	86.24
3	1989	85.03	69.86	77.60	77.97
4	1989	86.08	61.19	85.20	75.95
LJÓSMÉDRAFÉLAG ÍSLANDS					
1	1987	100.00	100.00	100.00	100.00
2	1987	111.20	215.54	99.47	122.48
3	1987	107.42	124.96	67.41	104.71
4	1987	109.52	109.15	76.32	105.46
1	1988	107.20	141.16	103.17	110.84
2	1988	106.40	201.99	77.07	114.43
3	1988	102.66	124.13	69.81	102.39
4	1988	102.63	145.98	69.35	107.19
1	1989	92.22	162.20	91.45	105.94
2	1989	96.07	148.87	83.28	100.92
3	1989	92.35	106.93	71.46	91.60
4	1989	90.24	121.61	86.63	93.62
MEINATEKNAFÉLAG ÍSLANDS					
2	1989	100.00	100.00	100.00	100.00
3	1989	98.30	94.10	96.14	97.00
4	1989	96.73	97.71	99.07	97.17
POSTMANNAFÉLAG ÍSLANDS					
1	1987	100.00	100.00	100.00	100.00
2	1987	100.30	77.97	62.78	92.06
3	1987	95.76	66.90	46.47	85.09
4	1987	99.31	101.58	91.70	99.75
1	1988	96.81	99.76	92.12	97.57
2	1988	95.20	75.99	56.48	87.89
3	1988	93.02	60.83	45.95	81.39
4	1988	93.29	79.17	82.28	88.52
1	1989	91.24	84.01	86.88	88.84
2	1989	90.65	62.71	50.52	80.58
3	1989	86.83	51.51	39.53	74.21
4	1989	87.90	69.02	77.95	81.69
STARFSMANNAFÉLAG RÍKISÚTVARPSINS					
1	1987	100.00	100.00	100.00	100.00
2	1987	100.47	127.26	114.16	107.73
3	1987	97.51	88.39	113.08	95.50
4	1987	100.33	99.07	155.39	101.27
1	1988	98.13	92.44	146.05	97.76
2	1988	96.92	84.32	130.31	94.42
3	1988	94.47	69.65	111.35	88.43
4	1988	94.36	72.12	140.22	89.64
1	1989	92.63	80.77	124.67	90.29
2	1989	89.71	80.49	115.18	87.90
3	1989	85.53	64.02	106.26	80.43
4	1989	85.48	98.34	132.55	89.89

KAUPMÁTTUR TAXTALAUNA BSRB RÍKISSTARFSMANNA EFTIR ÁRSFJÓRÐUNGUM

1. ársfjórðungur 1987 = 100

ATH KVARNINN ER SKORINN VIÐ 70



KDS MARS 1990

ÁRSFJÓRÐUNGAR FRÁ 1. ÁRSFJ. 1987 TIL OG MEB 4. ÁRSFJ. 1989

123412341234 123412341234 123412341234 123412341234 123412341234

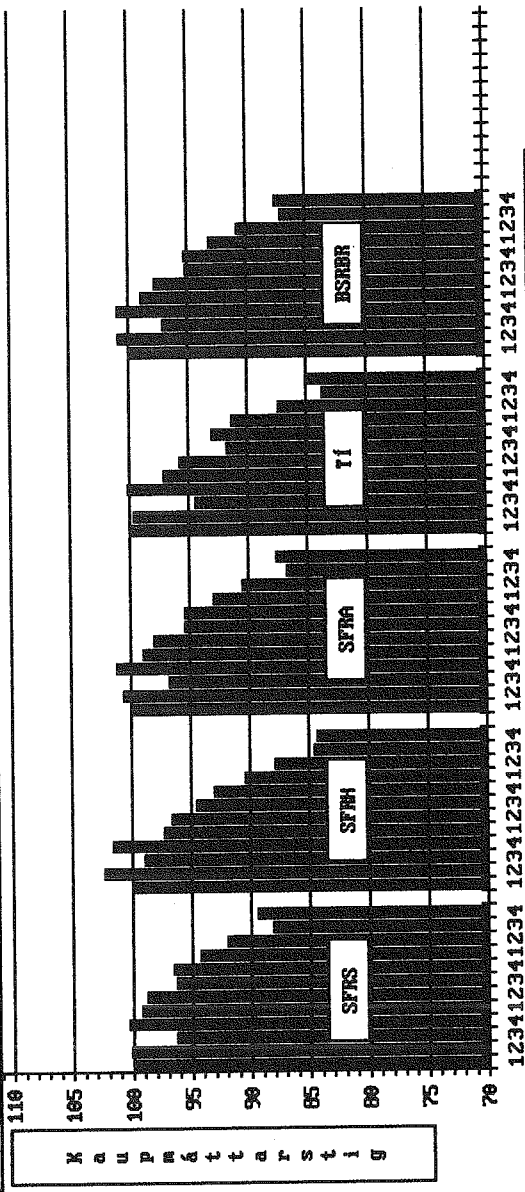
KAUPMATTUR ADILDARFÉLAGA BSRBR EFTIR ÁRSFJÓRDUNGUM (1.ÁRSFJ.1987 = 100)

FÉLAG	ÁRSFJ. OG ÁR	KAUPM. TAXTAL.	KAUPM. YFIRV.	KAUPM. ÖNNUR L.	KAUPM. HEILD.
STARFSMANNAFÉLAG SJONVARPSINS					
	1 1987	100.00	100.00	100.00	100.00
	2 1987	101.77	97.44	101.68	99.88
	3 1987	98.79	65.30	65.96	82.85
	4 1987	102.22	83.62	83.32	93.34
	1 1988	99.10	75.15	75.87	87.71
	2 1988	98.36	67.35	66.37	83.54
	3 1988	96.38	61.79	50.06	79.40
	4 1988	96.31	79.37	74.06	88.01
	1 1989	93.38	60.80	70.89	78.27
	2 1989	90.09	68.96	64.49	79.83
	3 1989	86.18	44.59	50.82	66.62
	4 1989	86.32	57.76	68.84	73.17
STARFSMANNAFÉLAG RIKISSTOFNANA T					
	1 1987	100.00	100.00	100.00	100.00
	2 1987	100.03	108.24	101.13	102.60
	3 1987	95.92	88.74	66.98	92.53
	4 1987	101.75	110.71	106.68	104.70
	1 1988	99.85	102.75	100.39	100.76
	2 1988	98.08	100.04	87.99	98.27
	3 1988	94.97	94.44	81.48	94.26
	4 1988	95.78	105.98	105.93	99.32
	1 1989	93.32	97.01	101.10	94.77
	2 1989	90.68	94.69	85.28	91.69
	3 1989	86.63	86.33	74.16	86.03
	4 1989	88.15	95.34	91.05	90.48
STARFSMANNAFÉLAG RIKISSTOFNANA S					
	1 1987	100.00	100.00	100.00	100.00
	2 1987	100.16	103.55	126.49	101.03
	3 1987	96.33	85.68	95.29	93.90
	4 1987	100.35	106.98	99.54	101.86
	1 1988	99.24	113.18	130.30	102.53
	2 1988	98.84	104.24	117.20	100.14
	3 1988	96.33	91.88	95.72	95.31
	4 1988	96.56	103.36	123.46	98.21
	1 1989	94.33	99.52	127.05	98.63
	2 1989	92.01	98.11	127.78	93.63
	3 1989	88.21	78.52	126.63	86.03
	4 1989	89.45	93.95	120.48	90.59
STARFSMANNAFÉLAG RIKISSTOFNANA H					
	1 1987	100.00	100.00	100.00	100.00
	2 1987	102.34	117.11	97.41	104.97
	3 1987	98.97	83.89	71.40	92.79
	4 1987	101.61	93.82	80.37	97.67
	1 1988	97.33	109.60	96.02	99.82
	2 1988	96.64	104.72	78.25	96.39
	3 1988	94.59	76.12	72.05	88.22
	4 1988	93.07	90.40	94.01	92.60
	1 1989	90.45	87.88	88.74	89.71
	2 1989	87.94	82.55	84.03	86.37
	3 1989	84.60	59.39	67.75	77.40
	4 1989	84.36	69.61	83.35	81.10
STARFSMANNAFÉLAG RIKISSTOFNANA ALLS					
	1 1987	100.00	100.00	100.00	100.00
	2 1987	100.63	108.41	99.62	102.58
	3 1987	96.78	87.05	70.45	93.14
	4 1987	101.16	105.38	92.26	101.85
	1 1988	98.97	106.75	100.99	101.05
	2 1988	98.02	101.76	84.37	98.39
	3 1988	95.40	89.12	77.56	93.01
	4 1988	95.39	100.73	101.90	97.04
	1 1989	92.97	94.78	97.12	93.61
	2 1989	90.56	92.89	85.93	90.96
	3 1989	86.80	78.59	70.55	83.99
	4 1989	87.70	88.79	89.60	88.06
TOLLVARDAFÉLAG ÍSLANDS					
	1 1987	100.00	100.00	100.00	100.00
	2 1987	99.68	118.76	82.04	105.92
	3 1987	94.44	93.59	97.08	94.26
	4 1987	100.18	96.88	89.38	98.54
	1 1988	97.11	103.67	95.93	99.52

KAUPMÁTTUR TAXTALAUNA BSRB RÍKISSTARFSMANNA EFTIR ÁRSFJÓRÐUNGUM

1. ársfjórðungur 1987 = 100

ATH KVABINN ER SKORINN VIÐ 70



KDS MARS 1990

ÁRSFJÓRÐUNGAR FRÁ 1. ÁRSFJ. 1987 TIL OG MED 4. ÁRSFJ. 1989

123412341234 123412341234 123412341234 123412341234 123412341234

K a u p m á t t a r s t i g

KAUPMÁTTUR AÐILDARFÉLAGA BSRBR EFTIR ARSFJÖRÐUNGUM (1.ARSFJ.1987 = 100)

FÉLAG	ARSFJ. OG AR	KAUPM. TAXTAL.	KAUPM. YFIRV.	KAUPM. ÖNNUR L.	KAUPM. HEILDL.
TOLLVARDAFÉLAG ÍSLANDS					
	2 1988	95.77	92.40	92.18	94.30
	3 1988	91.77	78.73	96.97	87.13
	4 1988	93.02	84.59	93.28	89.85
	1 1989	91.33	85.52	88.62	88.99
	2 1989	87.47	81.33	81.90	84.85
	3 1989	83.73	69.51	85.22	78.44
	4 1989	84.89	66.71	101.48	78.93
BSRB FÉLÖGIN HJA RÍKINU, ALLS					
	1 1987	100.00	100.00	100.00	100.00
	2 1987	100.88	109.30	95.64	103.09
	3 1987	97.09	87.38	74.00	92.90
	4 1987	100.93	100.72	90.61	100.28
	1 1988	98.95	100.03	100.32	99.35
	2 1988	97.78	95.53	85.82	96.43
	3 1988	95.18	82.89	78.41	90.57
	4 1988	95.30	89.91	97.39	93.81
	1 1989	93.16	88.68	96.64	92.02

BHRM HÖPAR, KAUPMATTUR EFTIR ARSFJÖRDUNGUM (1.ARSFJ.1987 = 100)

FÉLAG	ARSFJ. OG ÁR	KAUPM. TAXTAL.	KAUPM. YFIRV.	KAUPM. ÖNNUR L.	KAUPM. HEITDL.
BHRM HÖPUR 1 (HÍK/G)					
	1 1987	100.00	100.00	100.00	100.00
	2 1987	100.78	69.00	54.10	91.48
	3 1987	98.67	23.13	28.61	76.62
	4 1987	103.16	101.82	341.12	103.03
	1 1988	100.31	97.88	482.85	100.01
	2 1988	99.42	63.41	195.88	89.05
	3 1988	97.36	28.99	29.03	77.39
	4 1988	95.74	104.90	329.84	98.66
	1 1989	93.33	99.45	453.72	95.50
	2 1989	91.58	42.45	125.38	77.32
	3 1989	92.38	32.08	103.63	74.85
	4 1989	89.62	95.44	384.44	91.63
BHRM HÖPUR 2 (HÍK/F)					
	1 1987	100.00	100.00	100.00	100.00
	2 1987	100.35	112.91	70.23	104.93
	3 1987	98.26	26.48	27.88	71.73
	4 1987	102.95	110.01	97.81	105.54
	1 1988	99.27	78.79	111.77	91.75
	2 1988	98.24	77.58	70.54	90.59
	3 1988	95.61	29.77	32.68	71.28
	4 1988	94.17	110.90	73.29	100.30
	1 1989	91.59	81.98	93.41	88.05
	2 1989	88.89	50.58	24.14	75.32
	3 1989	88.24	50.47	58.67	74.88
	4 1989	86.27	80.61	58.65	84.15
BHRM HÖPUR 3 (FH, KKHÍ, FTK)					
	1 1987	100.00	100.00	100.00	100.00
	2 1987	100.65	90.89	00.00	99.61
	3 1987	98.30	44.64	6.43	92.77
	4 1987	101.35	117.23	00.00	102.94
	1 1988	99.37	77.13	55.99	97.08
	2 1988	98.33	95.50	5.28	98.00
	3 1988	95.85	57.79	00.00	91.91
	4 1988	94.67	133.62	00.00	98.62
	1 1989	91.63	116.47	00.00	94.14
	2 1989	88.47	109.88	00.00	90.63
	3 1989	85.65	64.89	00.00	83.49
	4 1989	83.68	115.80	00.00	86.94
BHRM HÖPUR 4 (FHH, FISP, II, SIF)					
	1 1987	100.00	100.00	100.00	100.00
	2 1987	97.91	109.05	105.49	100.81
	3 1987	94.41	88.57	79.53	92.16
	4 1987	96.25	85.51	78.77	92.77
	1 1988	94.29	95.88	94.81	94.67
	2 1988	93.17	89.57	78.44	91.41
	3 1988	90.18	72.15	66.35	84.72
	4 1988	88.66	84.55	113.81	89.47
	1 1989	86.01	84.69	93.16	86.21
	2 1989	83.05	82.23	88.92	83.27
	3 1989	82.51	79.26	77.09	81.45
	4 1989	79.81	77.08	86.95	79.71
BHRM HÖPUR 5 (LÆT, DÍ, SÍ, PÍ)					
	1 1987	100.00	100.00	100.00	100.00
	2 1987	101.59	112.07	105.80	103.21
	3 1987	98.01	87.35	57.69	92.07
	4 1987	101.03	115.62	78.57	99.92
	1 1988	100.69	102.69	82.51	98.74
	2 1988	102.70	113.85	62.27	99.67
	3 1988	96.59	89.82	59.47	91.41
	4 1988	97.71	114.38	91.74	98.78
	1 1989	96.19	135.48	62.49	96.38
	2 1989	90.81	109.87	86.52	92.29
	3 1989	87.27	82.92	67.67	84.47
	4 1989	86.57	92.17	101.11	88.89
BHRM HÖPUR 6 (KFVH, FÞ, SLÍR, FHSS)					
	1 1987	100.00	100.00	100.00	100.00
	2 1987	103.39	110.17	109.80	105.75
	3 1987	101.26	92.36	94.97	98.23
	4 1987	103.02	116.53	90.34	107.04
	1 1988	101.19	112.41	96.39	104.68

KAUPTMÁTTUR TAXTALAUNA BHMIR EFTIR ÁRSFJÓRÐUNGUM

1. ársfjórðungur 1987 = 100

ATH KVÆÐINN ER SKORINN VIÐ 70

115

110

K a u p m á t t a r s t i g

105

100

95

90

85

80

75

70

BHMIR1

BHMIR2

BHMIR3

BHMIR4

BHMIR5

BHMIR6

123412341234 123412341234 123412341234 123412341234 123412341234 123412341234

KUS MARS 1990

ÁRSFJÓRÐUNGAR FRÁ 1. ÁRSFJ. 1987 TIL OG MEÐ 4. ÁRSFJ. 1989

BHRM HÖPAR, KAUPMATTUR EFTIR ARSFJÖRÐUNGUM (1.ARSFJ.1987 = 100)

FÉLAG	ARSFJ. OG ÁR	KAUPM. TAXTAL.	KAUPM. YFIRV.	KAUPM. ÖNNUR L.	KAUPM. HEILD.
BHRM HÖPUR 6	(KVVH, FÞ, SLIR, FHSS)				
	2 1988	101.21	108.64	100.05	103.57
	3 1988	98.48	103.21	81.82	99.56
	4 1988	96.46	113.29	72.73	101.25
	1 1989	93.77	104.71	78.54	96.89
	2 1989	90.06	107.59	71.58	95.21
	3 1989	89.27	89.17	67.32	88.66
	4 1989	86.57	98.84	57.95	89.76
BHRM HÖPUR 7	(KA, FIN, MNI, FF)				
	1 1987	100.00	100.00	100.00	100.00
	2 1987	100.75	114.34	122.67	105.22
	3 1987	98.38	103.32	105.16	99.98
	4 1987	101.98	101.06	117.91	102.00
	1 1988	100.14	97.61	136.23	100.04
	2 1988	99.29	100.63	109.41	99.88
	3 1988	95.07	105.11	105.71	98.28
	4 1988	94.30	103.80	116.25	97.55
	1 1989	92.05	93.89	111.34	92.95
	2 1989	88.58	98.39	95.99	91.66
	3 1989	87.51	99.01	88.53	90.97
	4 1989	85.83	98.72	89.74	89.77
BHRM HÖPUR 8	(FÞ, FIF, ÚTG)				
	1 1987	100.00	100.00	100.00	100.00
	2 1987	101.84	104.05	82.36	102.17
	3 1987	99.31	86.57	77.04	96.38
	4 1987	99.96	101.44	78.28	100.12
	1 1988	98.02	89.13	89.97	96.03
	2 1988	98.47	99.28	90.84	98.59
	3 1988	95.73	88.24	58.41	93.83
	4 1988	94.05	101.33	73.68	95.48
	1 1989	91.41	93.29	83.65	91.76
	2 1989	87.99	98.73	61.61	90.13
	3 1989	86.56	89.27	53.72	86.90
	4 1989	84.37	96.86	58.41	86.89
BHRM FÉLÖGIN	ALLS				
	1 1987	100.00	100.00	100.00	100.00
	2 1987	101.03	101.58	103.11	101.23
	3 1987	99.01	56.50	72.28	86.89
	4 1987	102.21	105.58	82.88	102.64
	1 1988	99.73	88.70	95.55	99.65
	2 1988	99.42	87.08	77.89	99.59
	3 1988	96.20	61.41	70.71	88.19
	4 1988	95.02	107.53	90.53	98.28
	1 1989	92.43	90.15	89.98	88.75
	2 1989	89.41	73.54	84.88	89.02
	3 1989	88.25	67.33	74.77	82.27
	4 1989	86.00	89.18	89.85	86.96

KAUPTMÁTTUR TAXTALAUNA BHMR EFTIR ÁRSFJÓRÐUNGUM

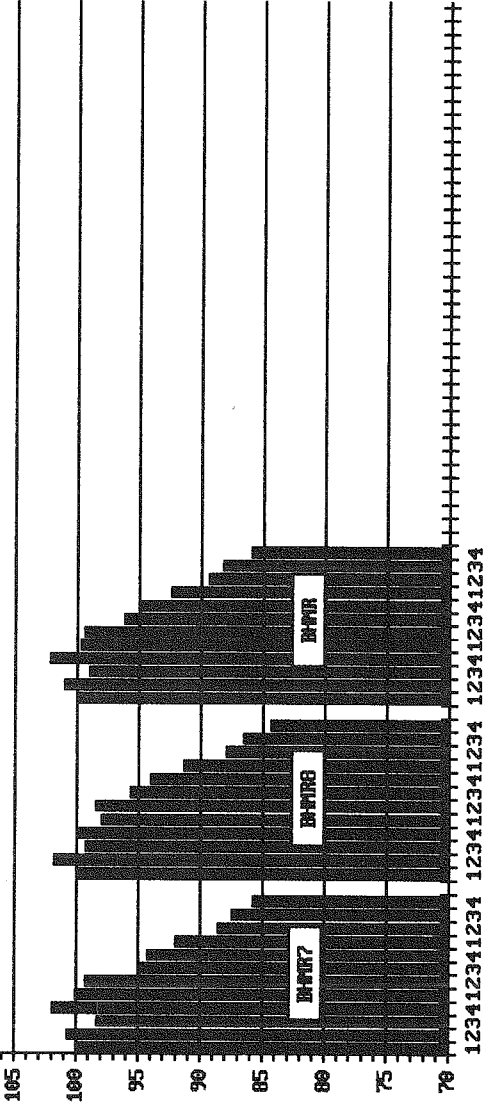
1. ársfjórðungur 1987 = 100

ATH: KVADINN ER SKORINN VIÐ 70

115

110

K a u p m á t t a r s t i g



123412341234 123412341234 123412341234

KOS MAÍSS 1998

ÁRSFJÓRÐUNGAR FRÁ 1. ÁRSFJ. 1987 TIL OG MED 4. ÁRSFJ. 1989

SKRIFSTOFA KJARARANNSÖKNARNEFNDAR

KAUPMATTUR ADILDARFÉLAGA KI EFTIR ÁRSFJÖRDUNGUM (1.ÁRSFJ.1987 = 100)

FÉLAG	ÁRSFJ. OG ÁR	KAUPM. TAXTAL.	KAUPM. YFIRV.	KAUPM. ÖNNUR L.	KAUPM. HEILD.
KENNARASAMBAND ÍSLANDS GRUNNSKÓLAR					
1	1987	100.00	100.00	100.00	100.00
2	1987	100.71	63.01	61.13	91.38
3	1987	99.21	23.67	17.46	80.51
4	1987	103.07	106.81	195.39	104.07
1	1988	99.80	106.10	236.30	101.47
2	1988	99.12	64.13	99.61	90.65
3	1988	97.99	28.92	38.86	80.90
4	1988	96.07	104.41	150.58	98.17
1	1989	93.10	103.35	160.19	95.68
2	1989	90.81	64.20	88.68	84.25
3	1989	91.07	29.45	39.55	75.82
4	1989	88.06	90.79	135.15	88.78
KENNARASAMBAND ÍSLANDS FRAMHÍÐSSKÓLAR					
1	1987	100.00	100.00	100.00	100.00
2	1987	101.07	89.92	75.31	97.63
3	1987	99.36	29.23	14.08	77.86
4	1987	103.93	113.34	99.67	106.77
1	1988	101.15	99.77	700.03	100.66
2	1988	100.59	85.61	333.41	95.90
3	1988	98.72	34.68	233.81	79.09
4	1988	96.22	106.35	723.42	99.25
1	1989	93.66	109.63	523.42	98.43
2	1989	91.52	85.39	300.68	89.43
3	1989	90.37	36.85	255.18	73.96
4	1989	86.98	92.66	73.87	88.68
KENNARASAMBAND ÍSLANDS, ALLS					
1	1987	100.00	100.00	100.00	100.00
2	1987	100.73	66.27	64.47	91.99
3	1987	99.19	24.26	16.93	80.17
4	1987	103.12	107.28	173.15	104.24
1	1988	99.88	104.95	200.26	101.26
2	1988	99.18	66.57	85.33	90.92
3	1988	97.98	29.36	34.99	80.57
4	1988	96.03	104.13	133.74	98.12
1	1989	93.12	103.76	136.72	95.85
2	1989	90.84	66.42	75.99	84.65
3	1989	90.98	30.27	36.09	75.58
4	1989	87.95	90.96	121.72	88.75

KAUPMÁTTUR TAXTALAUNA KÍ EFTIR ÁRSFJÓRÐUNGUM

1. ársfjórðungur 1987 = 100

ATH KVARDI ER SKORINN VÍÐ 70

115

110

105

100

95

90

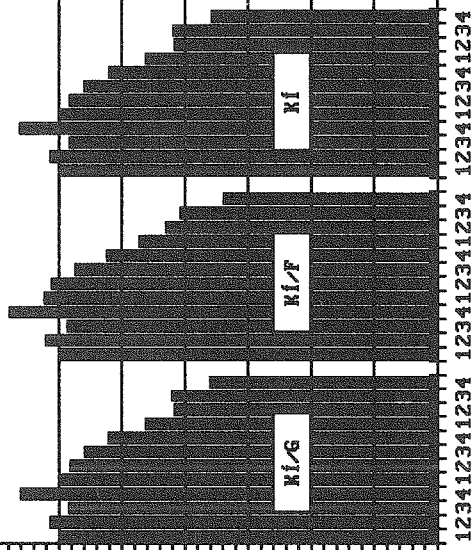
85

80

75

70

K a u p m á t t a r s t i g



123412341234 123412341234 123412341234

KÍS MAÍS 1990

ÁRSFJÓRÐUNGAR FRÁ 1. ÁRSFJ. 1987 TIL OG MÍÐ 4. ÁRSFJ. 1989

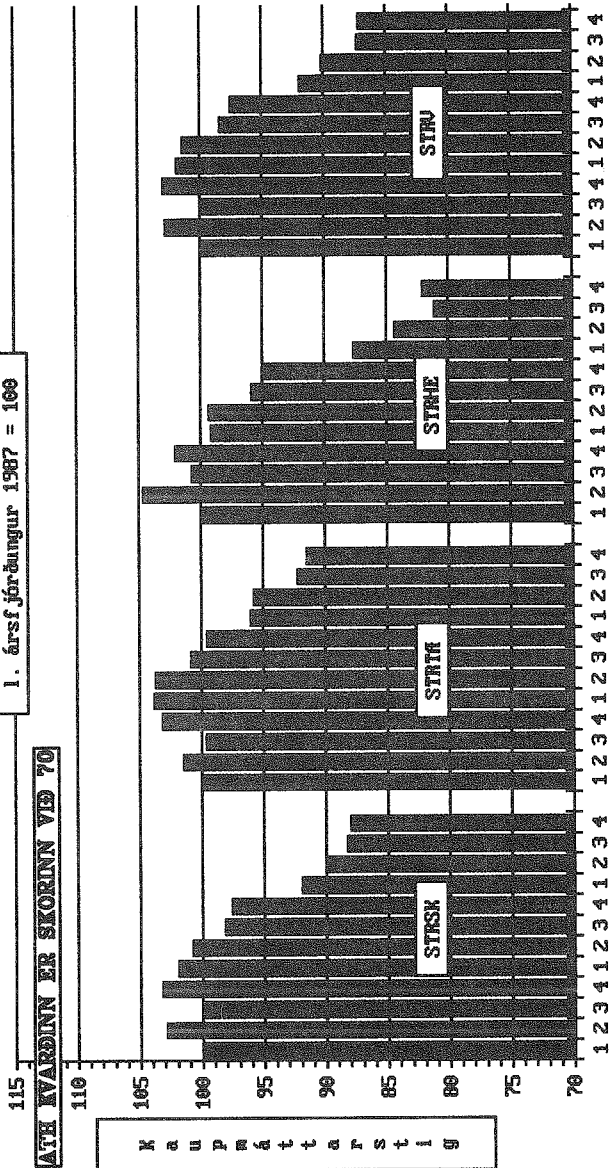
REYKJVAVIKURBORG, KAUPMATTUR EFTIR ARSFJÖRDUNGUM (1.ÁRSFJ.1987 = 100)

FÉLAG	ÁRSFJ. OG ÁR	KAUPM. TAXTAL.	KAUPM. YFIRV.	KAUPM. ÖNNUR L.	KAUPM. HEILDL.
ST.RV.SKRIFFSTOFUHOÐUR					
1	1987	100.00	100.00	100.00	100.00
2	1987	102.92	94.88	94.43	100.96
3	1987	99.85	83.68	78.32	95.80
4	1987	103.28	108.97	95.90	104.42
1	1988	102.00	108.50	93.73	103.28
2	1988	100.79	106.32	89.69	101.82
3	1988	98.23	89.22	74.00	95.75
4	1988	97.60	112.66	85.84	100.76
1	1989	91.95	92.07	189.87	93.83
2	1989	89.99	87.90	307.16	93.62
3	1989	88.32	71.70	158.14	85.90
4	1989	88.03	90.91	572.94	97.82
ST.RV.TEKNIHOÐUR					
1	1987	100.00	100.00	100.00	100.00
2	1987	101.50	100.53	90.63	100.30
3	1987	99.65	84.26	81.59	93.62
4	1987	103.17	103.39	102.73	103.20
1	1988	103.84	94.25	96.58	100.42
2	1988	103.74	109.11	89.99	104.17
3	1988	100.90	83.11	74.80	93.49
4	1988	99.57	100.14	97.22	99.54
1	1989	96.04	112.23	119.54	102.76
2	1989	95.80	92.31	117.66	96.60
3	1989	92.28	70.99	84.04	85.34
4	1989	91.49	84.52	185.66	97.31
ST.RV.HEILBRIGÐISHOÐUR					
1	1987	100.00	100.00	100.00	100.00
2	1987	104.71	125.71	97.29	108.54
3	1987	100.74	105.82	81.77	100.48
4	1987	102.12	105.13	85.20	101.57
1	1988	99.20	102.47	94.76	99.57
2	1988	99.35	113.07	88.94	101.46
3	1988	95.94	78.57	75.71	90.95
4	1988	94.81	91.88	93.83	94.13
1	1989	87.67	93.02	106.84	90.10
2	1989	84.38	83.90	140.54	88.17
3	1989	81.19	65.47	94.12	78.84
4	1989	82.07	83.19	199.08	90.40
STARFSMANNAFÉLAG REYKJAVIKURBORGAR ALLS					
1	1987	100.00	100.00	100.00	100.00
2	1987	102.87	105.78	93.44	103.02
3	1987	99.80	89.75	81.02	96.19
4	1987	103.02	105.00	95.85	103.08
1	1988	101.93	99.77	96.05	101.04
2	1988	101.47	109.22	89.77	102.67
3	1988	98.42	83.55	74.59	93.31
4	1988	97.56	100.57	94.86	98.14
1	1989	91.95	102.20	119.98	96.18
2	1989	90.15	90.32	140.41	93.23
3	1989	87.35	71.24	92.03	86.66
4	1989	87.19	87.06	223.86	95.42
ST.RV. HASKÓLAHOÐUR					
1	1987	100.00	100.00	100.00	100.00
2	1987	101.81	96.61	112.93	100.41
3	1987	98.18	88.33	117.33	95.49
4	1987	98.89	107.73	112.64	101.96
1	1988	97.44	98.51	117.43	98.30
2	1988	97.20	102.05	124.62	99.30
3	1988	93.99	89.84	108.21	92.99
4	1988	92.22	100.09	116.28	95.20
1	1989	89.15	102.91	252.91	96.96
2	1989	85.66	101.24	321.93	95.57
3	1989	84.79	86.65	230.39	88.47
4	1989	82.98	96.28	460.78	95.19
MEINATEKNAFÉLAG ÍSLANDS (R.BORG)					
1	1989	100.00	100.00	100.00	100.00
2	1989	99.50	101.08	126.55	101.58
3	1989	98.70	95.69	92.22	97.36
4	1989	97.04	94.70	181.64	101.20

KAUPMÁTTUR TAXTALAUNA R. BORG EFTIR ÁRSFJÓRÐUNGUM

1. ársfjórðungur 1987 = 100

ATH: KVADINN ER SKORINN VÍÐ 70



ÁRSFJÓRÐUNGAR FRÁ 1. ÁRSFJ. 1987 TIL OG MÍÐ 4. ÁRSFJ. 1989

KOS MARS 1990

REYKJAVÍKURBORG, KAUPMATTUR EFTIR ÁRSFJÖRDUNGUM (1.ÁRSFJ.1987 = 100)

FÉLAG	ÁRSFJ. OG ÁR	KAUPM. TAXTAL.	KAUPM. YFIRV.	KAUPM. ÖNNUR L.	KAUPM. HEILD.
FÖSTRUFÉLAG ÍSLANDS (R.BORG)					
	1 1989	100.00	100.00	100.00	100.00
	2 1989	99.06	106.66	205.04	102.83
	3 1989	96.52	84.45	84.78	94.50
	4 1989	93.63	107.35	386.97	103.02
HJÚKRUNARFÉLAG ÍSLANDS					
	1 1987	100.00	100.00	100.00	100.00
	2 1987	109.38	139.28	104.99	117.16
	3 1987	105.96	128.48	86.95	110.40
	4 1987	106.03	98.71	94.05	102.95
	1 1988	103.40	115.93	109.60	107.38
	2 1988	105.28	131.30	100.74	111.98
	3 1988	102.55	106.44	83.40	101.88
	4 1988	97.10	98.76	98.17	99.85
	1 1989	100.00	92.56	101.03	96.21
	2 1989	97.56	88.68	90.91	91.99
	3 1989	90.04	87.77	76.14	88.17
	4 1989	87.57	75.79	142.37	89.29

KAUPMÁTTUR TAXTALAUNA R.BORG EFTIR ÁRSFJÓRDUNGUM

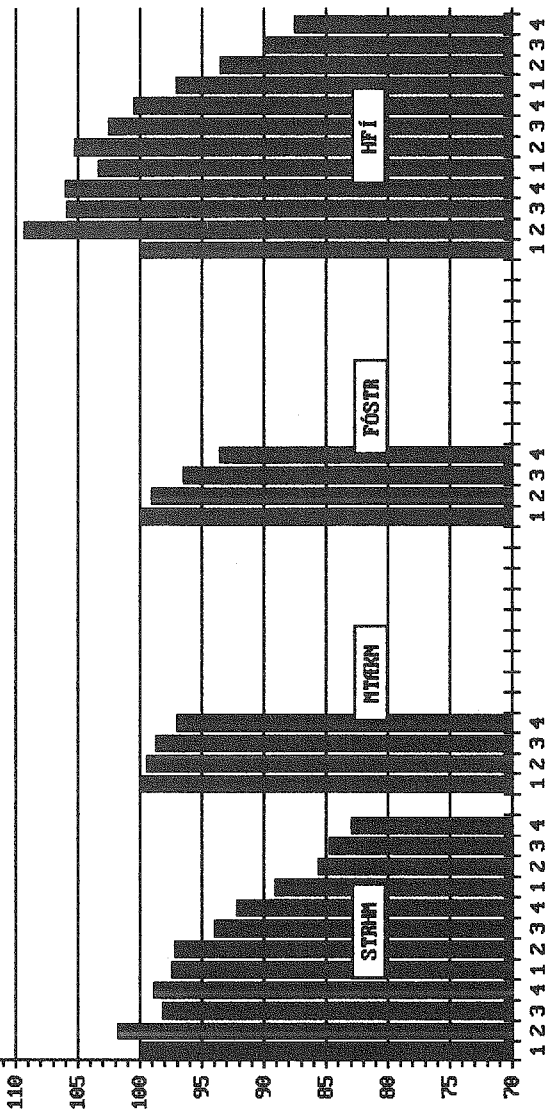
1. ársfjórðungur 1987 = 100

ATH KVÆÐINN ER SKÖRINN VIÐ 70

115

110

K a u p m á t t a r s t i g



ÁRSFJÓRDUNGAR FRÁ 1. ÁRSFJ. 1987 TIL OG MEÐ 4. ÁRSFJ. 1989

ROS MAÍRS 1990

KAUPMATTUR BANDALAGANNA EFTIR ARSFJÖRDUNGUM (1.ARSFJ.1987 = 100)

FÉLAG	ARSFJ. OG ÁR	KAUPM. TAXTAL.	KAUPM. YFIRV.	KAUPM. ÖNNUR L.	KAUPM. HEILDL.
STARFSMANNAFÉLAG REYKJAVIKURBORGAR ALLS					
1	1987	100.00	100.00	100.00	100.00
2	1987	102.87	105.78	93.44	103.02
3	1987	99.80	89.75	81.02	96.19
4	1987	103.02	105.00	95.85	103.08
1	1988	101.93	99.77	96.05	101.04
2	1988	101.47	109.22	89.71	102.67
3	1988	98.42	83.55	74.59	93.31
4	1988	97.56	100.57	94.86	98.14
1	1989	91.96	102.20	119.98	96.18
2	1989	90.15	90.32	140.41	93.23
3	1989	87.35	71.24	92.03	83.66
4	1989	87.19	87.06	223.86	95.42
BSRB FÉLÖGIN HJA RÍKINU, ALLS					
1	1987	100.00	100.00	100.00	100.00
2	1987	100.88	109.30	95.64	103.09
3	1987	97.09	87.38	74.00	90.90
4	1987	100.93	100.72	90.61	100.28
1	1988	98.95	100.03	100.32	99.44
2	1988	97.78	95.53	85.82	97.33
3	1988	95.18	82.89	78.41	90.57
4	1988	95.30	89.91	97.39	93.41
1	1989	93.16	88.68	96.64	92.02
2	1989	90.77	85.74	85.65	88.98
3	1989	87.16	72.57	73.34	82.04
4	1989	87.66	77.37	87.05	84.57
BHMR FÉLÖGIN, ALLS					
1	1987	100.00	100.00	100.00	100.00
2	1987	101.03	101.58	103.11	101.23
3	1987	99.01	56.50	72.28	86.89
4	1987	102.21	105.58	82.85	102.64
1	1988	99.73	88.70	95.55	96.55
2	1988	99.42	87.08	77.59	95.55
3	1988	96.20	61.41	70.71	86.19
4	1988	95.02	107.53	90.53	98.28
1	1989	92.43	90.15	89.95	91.75
2	1989	89.41	73.54	84.88	85.02
3	1989	88.25	67.33	74.77	82.27
4	1989	86.00	89.18	89.85	86.96
KENNARASAMBAND ÍSLANDS, ALLS					
1	1987	100.00	100.00	100.00	100.00
2	1987	100.73	66.27	64.47	91.99
3	1987	99.19	24.26	16.93	80.17
4	1987	103.12	107.28	173.15	104.24
1	1988	99.88	104.95	200.26	101.26
2	1988	99.18	66.57	85.33	90.92
3	1988	97.98	29.36	34.99	80.57
4	1988	96.03	104.76	133.72	98.12
1	1989	93.12	103.73	136.72	95.85
2	1989	90.84	66.44	75.96	84.65
3	1989	87.98	30.87	36.09	75.58
4	1989	87.95	90.96	121.72	88.75

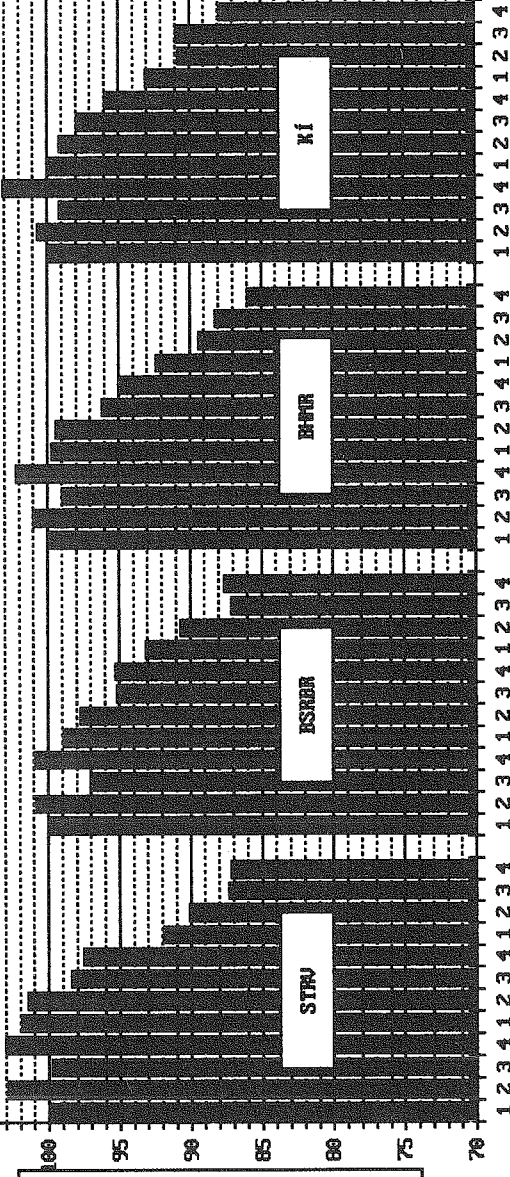
KAUPTMÁTTUR TAXTALAUNA BANDALAGA EFTIR ÁRSFJÓRÐUNGUM

1. ársfjórðungur 1987 = 100

ATH KVARDI ER SKORINN VIÐ 70

110

105



ÁRSFJÓRÐUNGAR FRA 1. ÁRSFJ. 1987 TIL OG MEÐ 4. ÁRSFJ. 1989

MOS MARS 1990

K a u p t m á t t a r s t i g

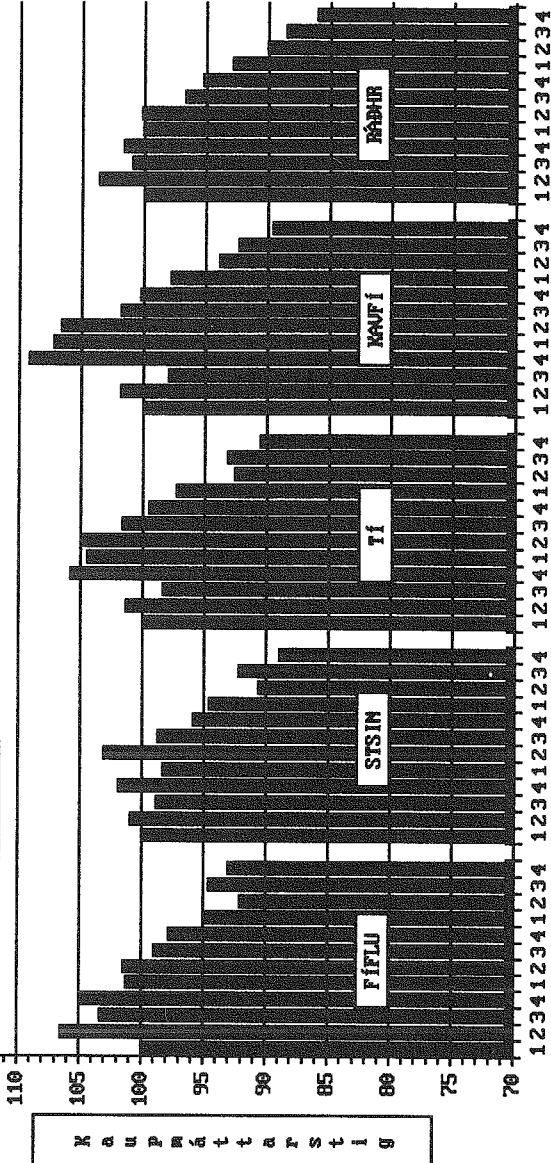
YMSIR HOPAR, KAUPMATTUR EFTIR ARSFJÖRDUNGUM (1.ARSFJ.1987 = 100)

FELAG	ARSFJ. OG AR	KAUPM. TAXTAL.	KAUPM. YFIRV.	KAUPM. ÖNNUR L.	KAUPM. HEILDL.
FELAG ISLENSKRA FLUGUMFERÐARSTJORA					
1	1987	100.00	100.00	100.00	100.00
2	1987	106.58	125.02	95.57	112.76
3	1987	103.39	119.89	95.77	109.12
4	1987	105.07	99.27	91.35	100.65
1	1988	101.26	109.01	95.87	103.69
2	1988	101.51	104.66	96.72	102.11
3	1988	99.00	97.73	99.38	98.55
4	1988	97.83	93.91	92.07	95.36
1	1989	95.09	101.22	95.17	97.35
2	1989	92.17	85.77	95.02	89.93
3	1989	94.64	110.31	97.82	101.61
4	1989	93.09	78.94	87.34	86.37
STARFSMANNAFELAG SINFONIUHLJÓMSVEITAR Í ÍSLANDS					
1	1987	100.00	100.00	100.00	100.00
2	1987	101.00	281.57	94.50	114.27
3	1987	98.90	39.63	00.00	93.21
4	1987	101.98	188.07	127.18	103.68
1	1988	98.39	17.18	16.76	91.30
2	1988	103.12	415.51	109.69	126.31
3	1988	98.79	134.91	00.00	100.15
4	1988	95.93	125.49	168.84	99.08
1	1989	94.64	68.29	155.74	93.51
2	1989	90.70	162.24	81.40	95.86
3	1989	92.29	193.59	103.75	99.94
4	1989	88.99	91.38	131.59	89.74
TEKNIFRÉDINGAFELAG ÍSLANDS, RIKISSTARFSMENN					
1	1987	100.00	100.00	100.00	100.00
2	1987	101.39	109.04	123.79	104.97
3	1987	98.46	93.49	76.31	95.99
4	1987	105.86	117.37	120.70	110.90
1	1988	104.54	100.05	111.50	102.81
2	1988	104.81	89.45	90.91	98.19
3	1988	101.67	98.39	82.24	99.95
4	1988	99.54	84.22	93.74	93.09
1	1989	97.35	93.67	93.22	95.75
2	1989	92.60	91.52	108.47	92.45
3	1989	93.19	94.40	94.55	93.71
4	1989	90.57	91.87	105.07	91.37
KJARAFÉL.OPINB. STARFSM. Í VERKFR.FÉL.ÍSLANDS					
1	1987	100.00	100.00	100.00	100.00
2	1987	101.84	106.07	107.38	103.46
3	1987	98.02	99.27	68.82	98.27
4	1987	109.22	120.22	128.06	113.47
1	1988	106.67	106.80	111.65	107.11
2	1988	107.23	98.92	102.99	103.76
3	1988	101.84	98.84	81.16	100.58
4	1988	100.32	96.05	119.21	98.87
1	1989	97.84	99.91	140.57	98.92
2	1989	93.96	98.05	111.51	95.61
3	1989	92.33	97.52	91.29	94.28
4	1989	89.64	98.82	88.93	93.05
UTAN FÉLAGA RÁÐHERRARÖÐUN					
1	1987	100.00	100.00	100.00	100.00
2	1987	103.69	123.37	139.12	109.16
3	1987	101.00	97.17	114.72	100.06
4	1987	101.68	121.97	120.62	107.39
1	1988	100.12	115.08	146.89	104.13
2	1988	100.22	128.36	166.05	108.13
3	1988	96.74	105.58	137.56	99.34
4	1988	95.31	100.58	145.43	97.00
1	1989	92.88	109.64	152.84	97.70
2	1989	90.10	129.19	164.83	100.99
3	1989	88.61	103.18	130.79	92.75
4	1989	86.09	98.95	145.17	89.87

KAUPMÁTTUR TAXTALAUNA ÝMISSA HÓPA EFTIR ÁRSFJÓRÐUNGUM

1. ársfjórðungur 1987 = 100

ATH KVADINN ER SKORINN VIÐ 70



KOS MARS 1996

ÁRSFJÓRÐUNGAR FRÁ 1. ÁRSFJ. 1987 TIL OG MÍÐ 4. ÁRSFJ. 1989

